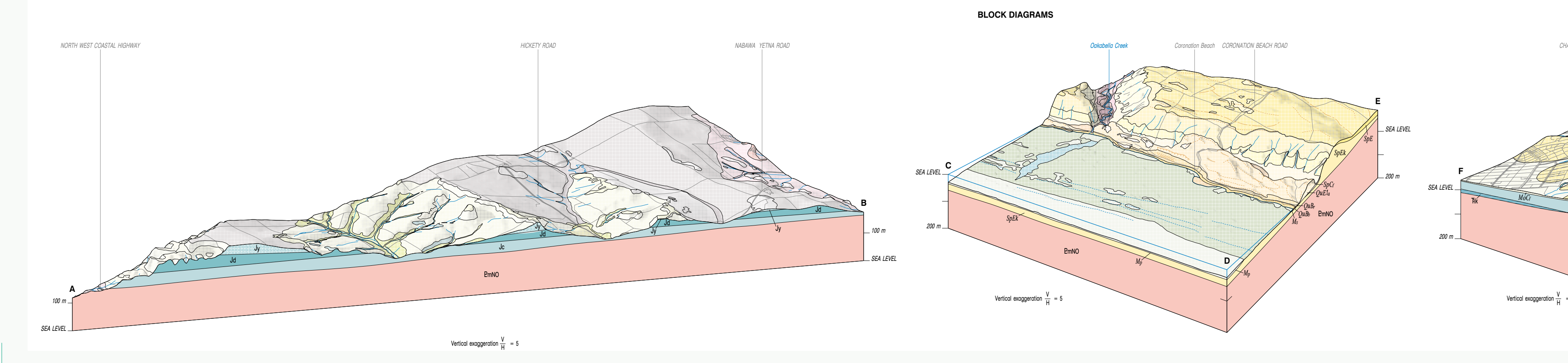
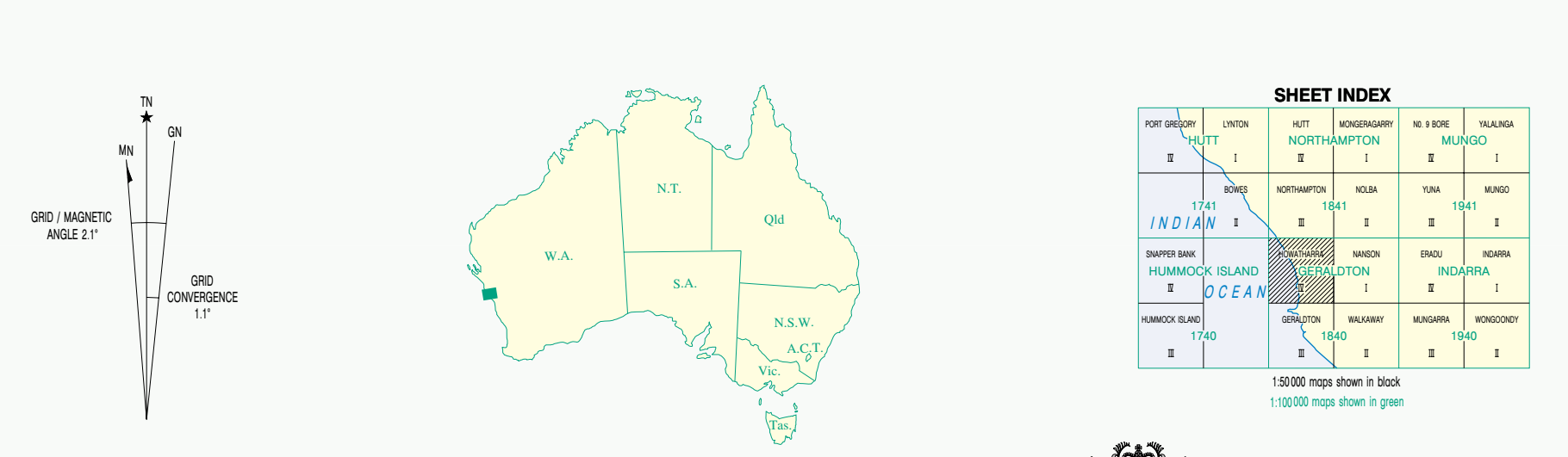
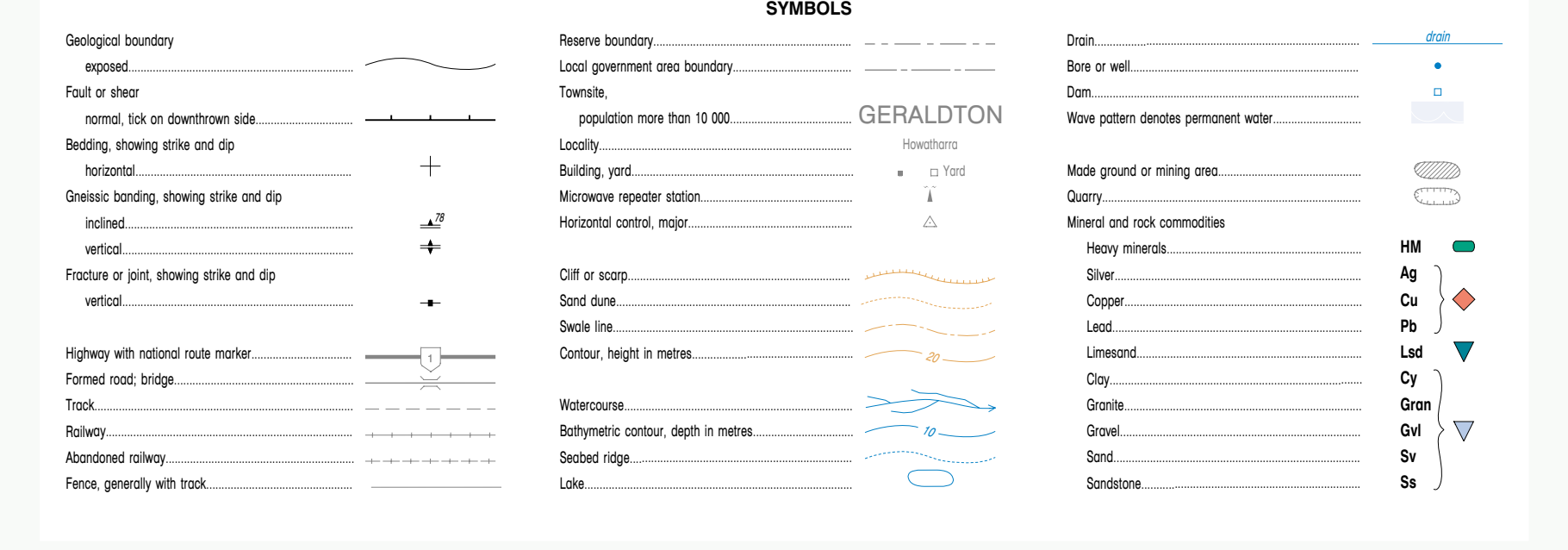
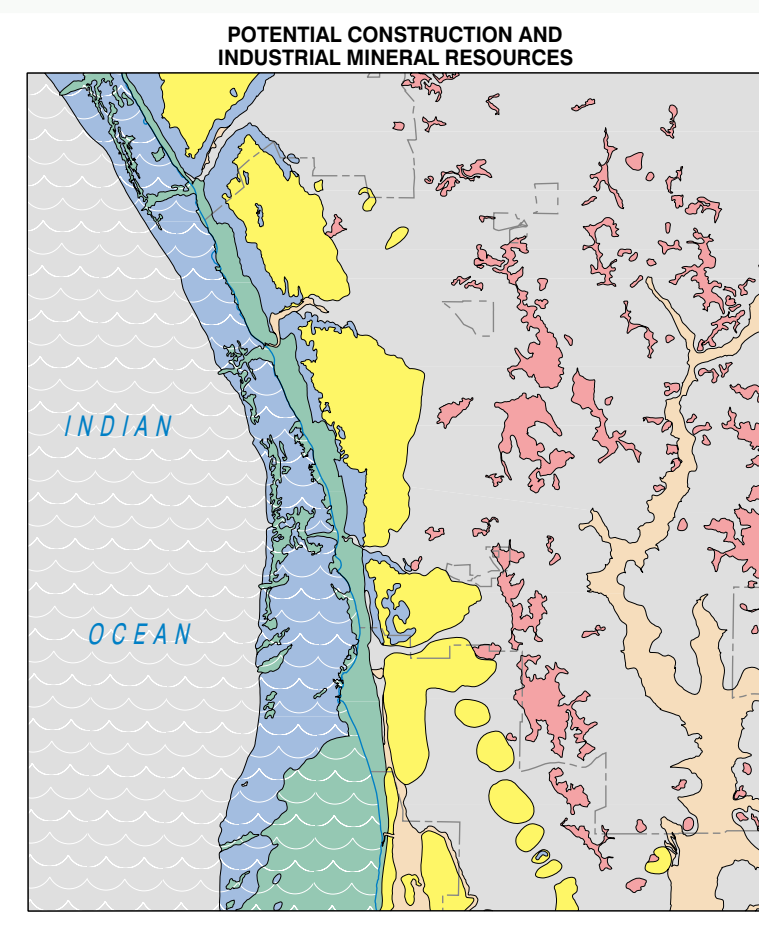


LEGEND		REFERENCE
Land System	Age	
		Phanerozoic
		Cretaceous
		Paleocene
		undivided
		Jurassic
		Triassic
		Proterozoic
		Description
MARINE	M <sub>1</sub>	Marine shore face
	M <sub>2</sub>	Marine nearshore
	M <sub>3</sub>	Marine offshore
	M <sub>4</sub>	Marine reef
QUINDALUP SYSTEM	Q <sub>1</sub>	Quindalup System - beach and dunes
	Q <sub>2</sub>	Quindalup System - dune
	Q <sub>3</sub>	Quindalup System - dune
	Q <sub>4</sub>	Quindalup System - dune
GREENOUGH ALLUVIAL SYSTEM	G <sub>1</sub>	Greenough Alluvial System - alluvial plain
	G <sub>2</sub>	Greenough Alluvial System - alluvial plain
	G <sub>3</sub>	Greenough Alluvial System - alluvial plain
	G <sub>4</sub>	Greenough Alluvial System - alluvial plain
GREENOUGH SYSTEM	G <sub>5</sub>	Greenough System - alluvial plain
	G <sub>6</sub>	Greenough System - alluvial plain
	G <sub>7</sub>	Greenough System - alluvial plain
	G <sub>8</sub>	Greenough System - alluvial plain
SPEARWOOD SYSTEM	S <sub>1</sub>	Spearwood System - alluvial plain
	S <sub>2</sub>	Spearwood System - alluvial plain
	S <sub>3</sub>	Spearwood System - alluvial plain
	S <sub>4</sub>	Spearwood System - alluvial plain
CASUARINA SYSTEM	C <sub>1</sub>	Casuarina System - alluvial plain
	C <sub>2</sub>	Casuarina System - alluvial plain
	C <sub>3</sub>	Casuarina System - alluvial plain
	C <sub>4</sub>	Casuarina System - alluvial plain
MORRIS SYSTEM	M <sub>5</sub>	Morris System - alluvial plain
	M <sub>6</sub>	Morris System - alluvial plain
	M <sub>7</sub>	Morris System - alluvial plain
	M <sub>8</sub>	Morris System - alluvial plain
NORTHAMPTON SYSTEM	N <sub>1</sub>	Northampton System - alluvial plain
	N <sub>2</sub>	Northampton System - alluvial plain
	N <sub>3</sub>	Northampton System - alluvial plain
	N <sub>4</sub>	Northampton System - alluvial plain



HOWATHARRA - MINERAL OCCURRENCES	
NUMBER	COMMODITY
SPECIALITY METAL - HM	
4001	HM
4002	HM
4003	HM
4004	HM
4005	HM
4006	HM
4007	HM
4008	HM
4009	HM
4010	HM
4011	HM
4012	HM
4013	HM
4014	HM
4015	HM
4016	HM
4017	HM
4018	HM
4019	HM
4020	HM
4021	HM
4022	HM
4023	HM
4024	HM
4025	HM
4026	HM
4027	HM
4028	HM
4029	HM
4030	HM
4031	HM
4032	HM
4033	HM
4034	HM
4035	HM
4036	HM
4037	HM
4038	HM
4039	HM
4040	HM
4041	HM
4042	HM
4043	HM
4044	HM
4045	HM
4046	HM
4047	HM
4048	HM
4049	HM
4050	HM
4051	HM
4052	HM
4053	HM
4054	HM
4055	HM
4056	HM
4057	HM
4058	HM
4059	HM
4060	HM
4061	HM
4062	HM
4063	HM
4064	HM
4065	HM
4066	HM
4067	HM
4068	HM
4069	HM
4070	HM
4071	HM
4072	HM
4073	HM
4074	HM
4075	HM
4076	HM
4077	HM
4078	HM
4079	HM
4080	HM
4081	HM
4082	HM
4083	HM
4084	HM
4085	HM
4086	HM
4087	HM
4088	HM
4089	HM
4090	HM
4091	HM
4092	HM
4093	HM
4094	HM
4095	HM
4096	HM
4097	HM
4098	HM
4099	HM
4100	HM
4101	HM
4102	HM
4103	HM
4104	HM
4105	HM
4106	HM
4107	HM
4108	HM
4109	HM
4110	HM
4111	HM
4112	HM
4113	HM
4114	HM
4115	HM
4116	HM
4117	HM
4118	HM
4119	HM
4120	HM
4121	HM
4122	HM
4123	HM
4124	HM
4125	HM
4126	HM
4127	HM
4128	HM
4129	HM
4130	HM
4131	HM
4132	HM
4133	HM
4134	HM
4135	HM
4136	HM
4137	HM
4138	HM
4139	HM
4140	HM
4141	HM
4142	HM
4143	HM
4144	HM
4145	HM
4146	HM
4147	HM
4148	HM
4149	HM
4150	HM
4151	HM
4152	HM
4153	HM
4154	HM
4155	HM
4156	HM
4157	HM
4158	HM
4159	HM
4160	HM
4161	HM
4162	HM
4163	HM
4164	HM
4165	HM
4166	HM
4167	HM
4168	HM
4169	HM
4170	HM
4171	HM
4172	HM
4173	HM
4174	HM
4175	HM
4176	HM
4177	HM
4178	HM
4179	HM
4180	HM
4181	HM
4182	HM
4183	HM
4184	HM
4185	HM
4186	HM
4187	HM
4188	HM
4189	HM
4190	HM
4191	HM
4192	HM
4193	HM
4194	HM
4195	HM
4196	HM
4197	HM
4198	HM
4199	HM
4200	HM
4201	HM
4202	HM
4203	HM
4204	HM
4205	HM
4206	HM
4207	HM
4208	HM
4209	HM
4210	HM
4211	HM
4212	HM
4213	HM
4214	HM
4215	HM
4216	HM
4217	HM
4218	HM
4219	HM
4220	HM
4221	HM
4222	HM
4223	HM
4224	HM
4225	HM
4226	HM
4227	HM
4228	HM
4229	HM
4230	HM
4231	HM
4232	HM
4233	HM
4234	HM
4235	HM
4236	HM
4237	HM
4238	HM
4239	HM
4240	HM
4241	HM
4242	HM
4243	HM
4244	HM
4245	HM
4246	HM
4247	HM
4248	HM
4249	HM
4250	HM
4251	HM
4252	HM
4253	HM
4254	HM
4255	HM
4256	HM
4257	HM
4258	HM
4259	HM
4260	HM
4261	HM
4262	HM
4263	HM
4264	HM
4265	HM
4266	HM
4267	HM
4268	HM
4269	HM
4270	HM
4271	HM
4272	HM
4273	HM
4274	HM
4275	HM
4276	HM
4277	HM
4278	HM
4279	HM
4280	HM
4281	HM
4282	HM
4283	HM
4284	HM
4285	HM
4286	HM
4287	HM
4288	HM
4289	HM
4290	HM
4291	HM
4292	HM
4293	HM
4294	HM
4295	HM
4296	HM
4297	HM
4298	HM
4299	HM
4300	HM
4301	HM
4302	HM
4303	HM
4304	HM
4305	HM
4306	HM
4307	HM
4308	HM
4309	HM
4310	HM
4311	HM
4312	HM
4313	HM
4314	HM
4315	HM
4316	HM
4317	HM
4318	HM
4319	HM
4320	HM
4321	HM
4322	HM
4323	HM
4324	HM
4325	HM
4326	HM
4327	HM
4328	HM
4329	HM
4330	HM
4331	HM
4332	HM
4333	HM
4334	HM
4335	HM
4336	HM
4337	HM
4338	HM
4339	HM
4340	HM
4341	HM
4342	HM
4343	HM
4344	HM
4345	HM
4346	HM
4347	HM
4348	HM
4349	HM
4350	HM
4351	HM
4352	HM
4353	HM
4354	HM
4355	HM
4356	HM
4357	HM
4358	HM
4359	HM
4360	HM
4361	HM
4362	HM
4363	HM
4364	HM
4365	HM
4366	HM
4367	HM
4368	HM
4369	HM
4370	HM
4371	HM
4372	HM
4373	HM
4374	HM
4375	HM
4376	HM
4377	HM
4378	HM
4379	HM
4380	HM
4381	HM
4382	HM
4383	HM
4384	HM
4385	HM
4386	HM
4387	HM
4388	HM
4389	HM
4390	HM
4391	HM
4392	HM
4393	HM
4394	HM
4395	HM
4396	HM
4397	HM
4398	HM
4399	HM
4400	HM
4401	HM
4402	HM
4403	HM
4404	HM
4405	HM
4406	HM
4407	HM
4408	HM
4409	HM
4410	HM
4411	HM
4412	HM
4413	HM
4414	HM
4415	HM
4416	HM
4417	HM
4418	HM
4419	HM
4420	HM
4421	HM
4422	HM
4423	HM
4424	HM
4425	HM
4426	HM
4427	HM
4428	HM
4429	HM
4430	HM
4431	HM
4432	HM
4433	HM
4434	HM
4435	HM
4436	HM
4437	HM
4438	HM
4439	HM
4440	HM
4441	HM
4442	HM
4443	HM
4444	HM
4445	HM
4446	HM
4447	HM
4448	HM
4449	HM
4450	HM
4451	HM
4452	HM
4453	HM
4454	HM
4455	HM
4456	HM
4457	HM
4458	HM
4459	HM
4460	HM
4461	HM
4462	HM
4463	HM
4464	HM
4465	HM
4466	HM
4467	HM
4468	HM
4469	HM
4470	HM
4471	HM
4472	HM
4473	HM
4474	HM
4475	HM
4476	HM
4477	HM
4478	HM
4479	HM
4480	HM
4481	HM
4482	HM
4483	HM
4484	HM
4485	HM
4486	HM
4487	HM
4488	HM
4489	HM
4490	HM
4491	HM
4492	HM
4493	HM
4494	HM
4495	HM
4496	HM
4497	HM
4498	HM
4499	HM
4500	HM