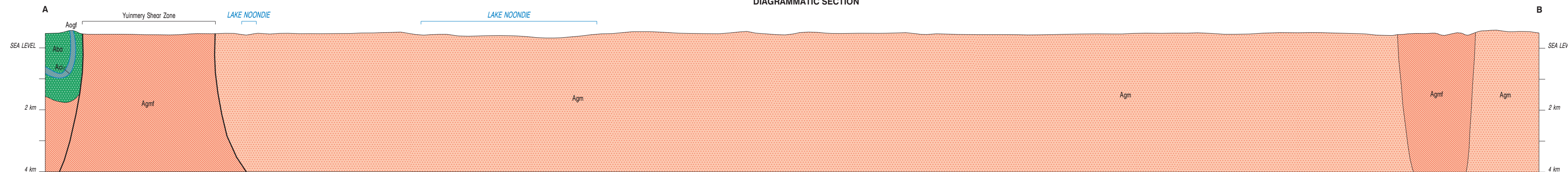


DIAGRAMMATIC SECTION



Geology by S. F. Chen 2002

Geomorphology by:

[1] D. R. Nelson, in prep., GSWA Record 2004/2.

Compiled by G. Hall and G. Loe.

Cartography by P. Taylor, K. Greenberg, and S. Williams.

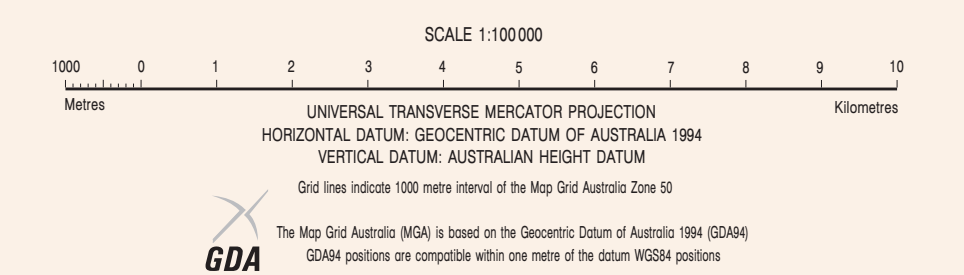
Mineralization and rock commodity information from non-confidential data held in the WAMN database, GSWA, at 12 September 2003.

Topography from the Department of Land Information Sheet 54-4, 2740, with modifications from geological field survey.

Plotted by the Geological Survey of Western Australia. Digital and hard copies of this map are available from the Information Centre, Department of Industry and Resources, 100 Park Street, East Perth, WA, 6004. Phone (08) 9222 3444. Fax (08) 9222 3444. Web: www.doir.wa.gov.au. Email: geologicalsurvey@doir.wa.gov.au.

The recommended reference for this map is: CHEN, S. F., 2002, Rays Rocks, WA, Sheet 2740 Western Australia Geological Survey, 1:100 000 Geological Series.

The recommended reference for this map is: CHEN, S. F., 2002, Rays Rocks, WA, Sheet 2740 Western Australia Geological Survey, 1:100 000 Geological Series.

Department of
Industry and ResourcesCLIVE BROWN, M.L.A.
MINISTER FOR STATE DEVELOPMENTJAM LEMICK
DIRECTOR GENERALGeological Survey of
Western AustraliaTM. GRIFFIN
DIRECTORRAYS ROCKS
SHEET 2740
FIRST EDITION 2003
Version 1 - December 2003

© Western Australia 2003