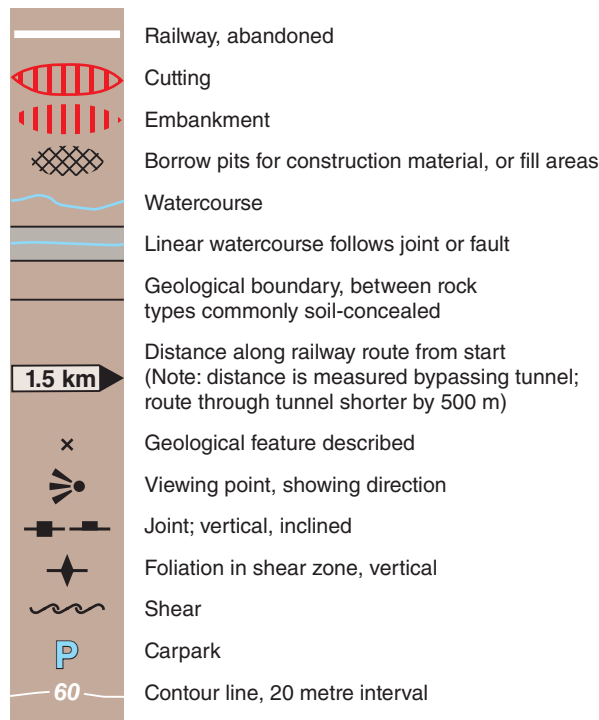


JOHN FORREST NATIONAL PARK RAILWAY RESERVE HERITAGE GEOTRAIL

GEOLOGICAL SKETCH MAP BETWEEN SWAN VIEW AND JOHN FORREST NATIONAL PARK HEADQUARTERS



NOTE: Rock type is granite, granodiorite, or monzogranite with rare granite gneiss, except where...

D1 Dolerite dykes mapped along rail, photo interpreted elsewhere

200 metres

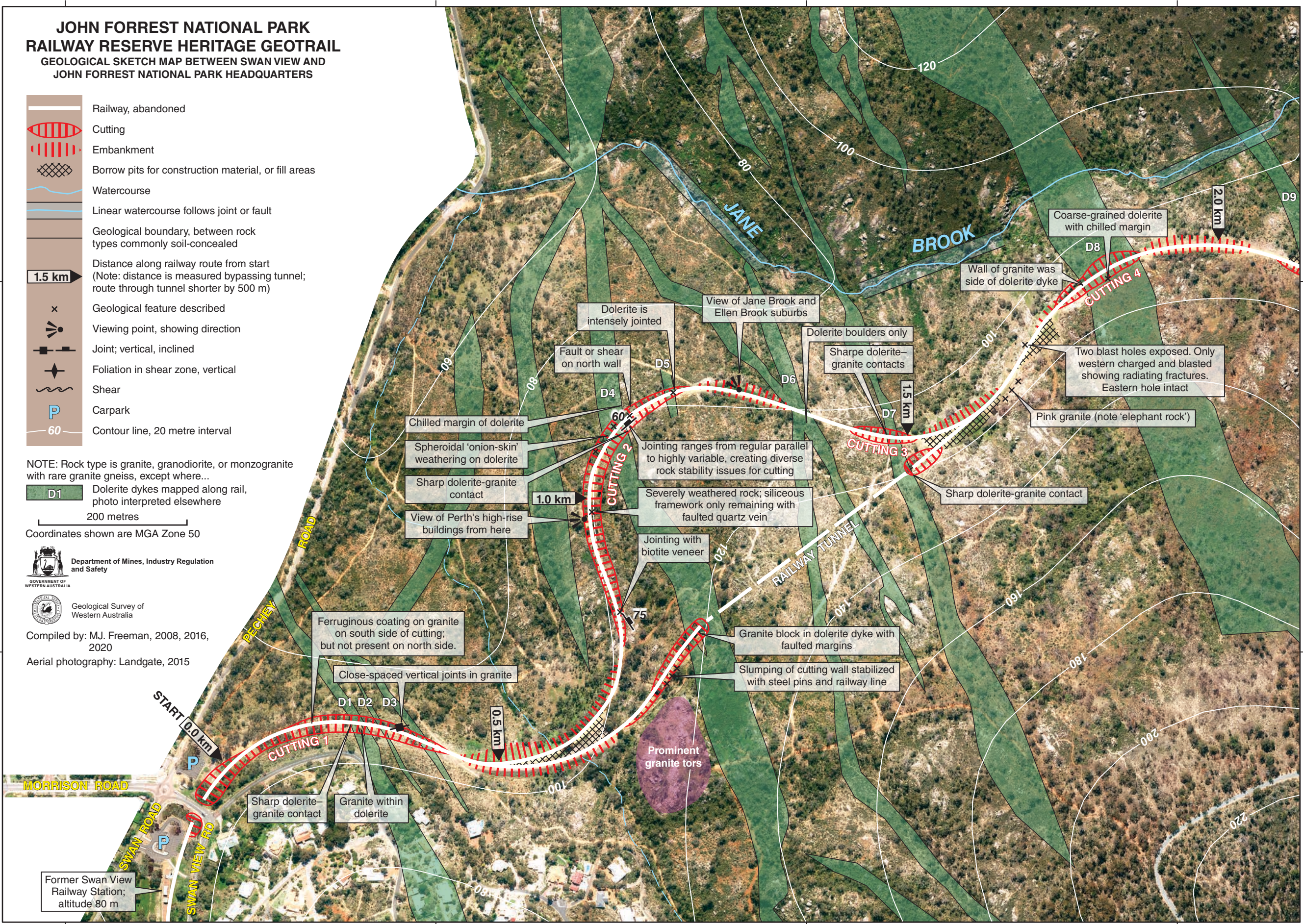
Coordinates shown are MGA Zone 50



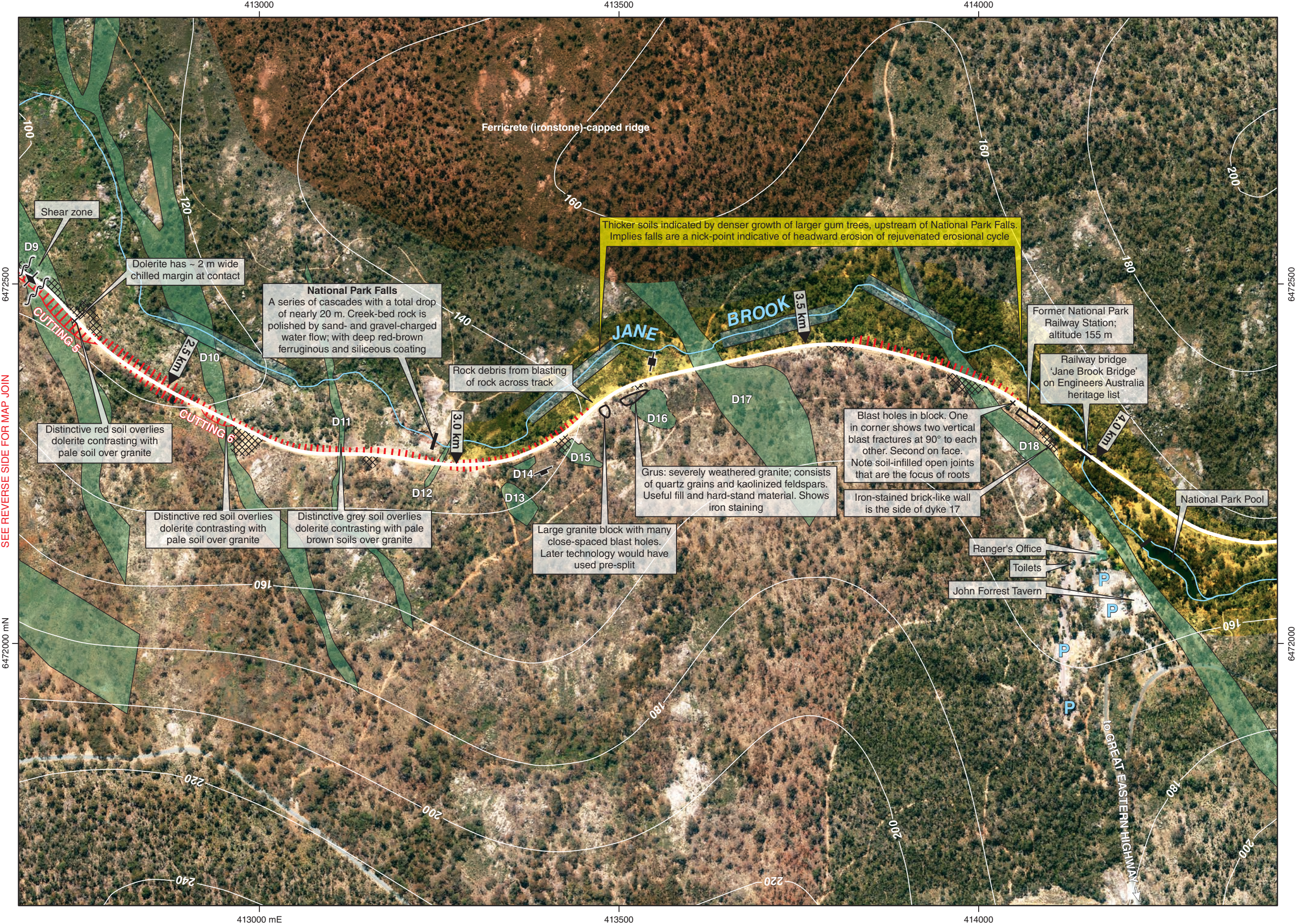
Geological Survey of Western Australia

Compiled by: MJ. Freeman, 2008, 2016, 2020

Aerial photography: Landgate, 2015



SEE REVERSE SIDE FOR MAP JOIN



Ferricrete (ironstone)-capped ridge

Thicker soils indicated by denser growth of larger gum trees, upstream of National Park Falls. Implies falls are a nick-point indicative of headward erosion of rejuvenated erosional cycle

National Park Falls
A series of cascades with a total drop of nearly 20 m. Creek-bed rock is polished by sand- and gravel-charged water flow; with deep red-brown ferruginous and siliceous coating

Former National Park Railway Station; altitude 155 m

Railway bridge 'Jane Brook Bridge' on Engineers Australia heritage list

Blast holes in block. One in corner shows two vertical blast fractures at 90° to each other. Second on face. Note soil-infilled open joints that are the focus of roots

Iron-stained brick-like wall is the side of dyke 17

Grus: severely weathered granite; consists of quartz grains and kaolinized feldspars. Useful fill and hard-stand material. Shows iron staining

Large granite block with many close-spaced blast holes. Later technology would have used pre-split

Rock debris from blasting of rock across track

Dolerite has ~ 2 m wide chilled margin at contact

Distinctive red soil overlies dolerite contrasting with pale soil over granite

Distinctive red soil overlies dolerite contrasting with pale soil over granite

Distinctive grey soil overlies dolerite contrasting with pale brown soils over granite

National Park Pool

Ranger's Office

Toilets

John Forrest Tavern

SEE REVERSE SIDE FOR MAP JOIN

413000 mE

413500

414000

6472000 mN

6472000

6472500