



Department of
Industry and Resources

**RECORD
2007/8**

A CLASSIFICATION SYSTEM FOR REGOLITH IN WESTERN AUSTRALIA (MARCH 2007 UPDATE)

**by R. M. Hocking, R. L. Langford, A. M. Thorne,
A. J. Sanders, P. A. Morris, C. A. Strong,
J. R. Gozzard, and A. Riganti**



Geological Survey of Western Australia



GEOLOGICAL SURVEY OF WESTERN AUSTRALIA

Record 2007/8

A CLASSIFICATION SYSTEM FOR REGOLITH IN WESTERN AUSTRALIA (MARCH 2007 UPDATE)

by

**R. M. Hocking, R. L. Langford, A. M. Thorne, A. J. Sanders¹, P. A. Morris,
C. A. Strong, J. R. Gozzard, and A. Riganti**

¹ current address:
Singapore Sailing Federation
1500 East Coast Parkway
National Sailing Centre
Singapore 468963

Perth 2007

MINISTER FOR RESOURCES
Hon. Francis Logan MLA

DIRECTOR GENERAL, DEPARTMENT OF INDUSTRY AND RESOURCES
Jim Limerick

EXECUTIVE DIRECTOR, GEOLOGICAL SURVEY OF WESTERN AUSTRALIA
Tim Griffin

REFERENCE

The recommended reference for this publication is:

HOCKING, R. M., LANGFORD, R. L., THORNE, A. M., SANDERS, A. J., MORRIS, P. A., STRONG, C. A., GOZZARD, J. R., and RIGANTI, A., 2007, A classification system for regolith in Western Australia (March 2007 update): Western Australia Geological Survey, Record 2007/8, 19p.
(This Record is an update of Record 2005/10)

National Library of Australia Card Number and ISBN 978-1-74168-103-1

Cover image modified from Landsat data, courtesy of ACRES

Published 2007 by Geological Survey of Western Australia

**This Record is published in digital format (PDF), and is available online at www.doir.wa.gov.au/GSWA/publications.
Laser-printed copies can be ordered from the Information Centre for the cost of printing and binding.**

Further details of geological publications and maps produced by the Geological Survey of Western Australia are available from:

Information Centre
Department of Industry and Resources
100 Plain Street
EAST PERTH, WESTERN AUSTRALIA 6004
Telephone: +61 8 9222 3459 Facsimile: +61 8 9222 3444
www.doir.wa.gov.au/GSWA/publications

Contents

Abstract	1
Introduction	1
Classification system	3
Landform codes (primary level).....	4
Landform code qualifiers	4
Regolith age	5
Compositional codes (secondary and tertiary).....	10
Assigning secondary codes	10
Named lithostratigraphic units	10
Regolith stratigraphy	12
Late Mesozoic – Early Cenozoic	14
Middle Cenozoic	14
Late Cenozoic (Pliocene and Quaternary)	14
References	17

Appendix

Glossary	19
----------------	----

Figures

1. Generalized distribution of duricrust (ferruginous, siliceous, and calcareous), alluvium, eolian deposits, and weathered and fresh bedrock in Western Australia	2
2. Diagrammatic relationships of regolith units in Western Australia, showing likely primary regolith codes	5
3. Selection of secondary codes	11
4. Selection of secondary codes for exposed regolith (X) derived from igneous and high-grade metamorphic rocks	12
5. Paleodrainage systems in Western Australia	15

Tables

1. Definitions of regimes in the RED scheme, adapted from Anand et al. (1993a,b)	3
2. Primary regolith codes for GSWA maps	4
3. Landform (primary code) qualifiers	6
4. Secondary codes and qualifiers for regolith composition	8
5. Tertiary codes and qualifiers for parent rock or cement type	9
6. Summary of climatic and regolith changes from the Mesozoic to the present day	13

A classification system for regolith in Western Australia (March 2007 update)

by

R. M. Hocking, R. L. Langford, A. M. Thorne, A. J. Sanders¹, P. A. Morris,
C. A. Strong, J. R. Gozzard, and A. Riganti

Abstract

This Record presents a comprehensive classification system for regolith units in Western Australia that can be used on a wide variety of map types and scales produced by the Geological Survey of Western Australia (GSWA). The system is based on the landform position and principal regolith-forming process, qualified by the composition of the regolith. The classification rationalizes previous GSWA schemes for Cenozoic units, and expands the RED (Residual–Erosional–Depositional) regolith–landform mapping scheme developed by the Commonwealth Scientific and Industrial Research Organisation (CSIRO). The classification aims for a uniform, comprehensive, flexible, and reasonably intuitive approach to mapping regolith in Western Australia.

The classification has a defined set of primary codes that describe the landform setting and process: *R* (residual or relict), *X* (exposed), *C* (colluvial), *W* (sheetwash), *A* (alluvial), *L* (lacustrine), *E* (eolian), *S* (sandplain; mixed and eolian origins), *B* (beach, or wave-dominated coastline), *T* (tide-dominated coastline), and *M* (marine).

C, *W*, *A*, and *L* can be grouped into a higher level of *V* (valley); *B*, *T*, and *M* into *K* (coastal); and all of these into *D* (depositional), that, along with *R* and *X*, roll up to a simplified classification suitable for summary maps. Subdivision of the primary landform codes is achieved using subscripts.

Optional secondary codes specify regolith composition and, again, subscripts allow for more precise description. Tertiary codes, also optional, can be used to specify parent rock and cement type.

Numbers are employed to differentiate relative age of regolith.

The use of combined primary, secondary, and tertiary codes provides a flexible hierarchical system for description of the regolith in Western Australia, applicable to maps at many scales.

The 2005 update presented additions to primary, secondary, and tertiary regolith codes, and information dealing with the storage of regolith codes in digital databases. This update presents additions to primary and tertiary regolith codes and some nomenclature changes.

KEYWORDS: regolith, environmental setting, superficial sediments, residual sediments, Cenozoic, stratigraphy, paleoclimatology, climatology

Introduction

Regolith is the layer of mineral and organic material, of diverse origin, that nearly everywhere forms the surface of the land and rests on bedrock. It is commonly unconsolidated, and comprises a wide range of materials, including alluvium, windblown deposits, accumulations of vegetation (such as peat), volcanic ash, glacial drift, and soil (Jackson, 1997). On Geological Survey of Western Australia (GSWA) maps, both superficial sediments and duricrust have been identified as separate regolith units. Duricrust in Western Australia is most commonly calcrete, silcrete, or ferruginous duricrust (such as ferricrete or

lateritic residuum, often referred to as ‘laterite’) as defined by Anand and Paine (2002) and Eggleton (2001); see also the Appendix and Figure 1. There are few discussions of the regional extent and composition of regolith in Western Australia, apart from the comprehensive treatment of Yilgarn regolith by Anand and Paine (2002). This current Record is an updated version of two previous Records (Hocking et al., 2001, 2005), which discussed a classification system for regolith in Western Australia.

Parameters that can be used to classify regolith include material type and properties, structural characteristics, landform slope and morphology, evidence of process, and evidence of relative or absolute age. Anand et al. (1993a) described and classified regolith according to its composition and position in an idealized landscape profile, and differentiated three major regimes: Residual,

¹ current address: Singapore Sailing Federation, 1500 East Coast Parkway, National Sailing Centre, Singapore 468963

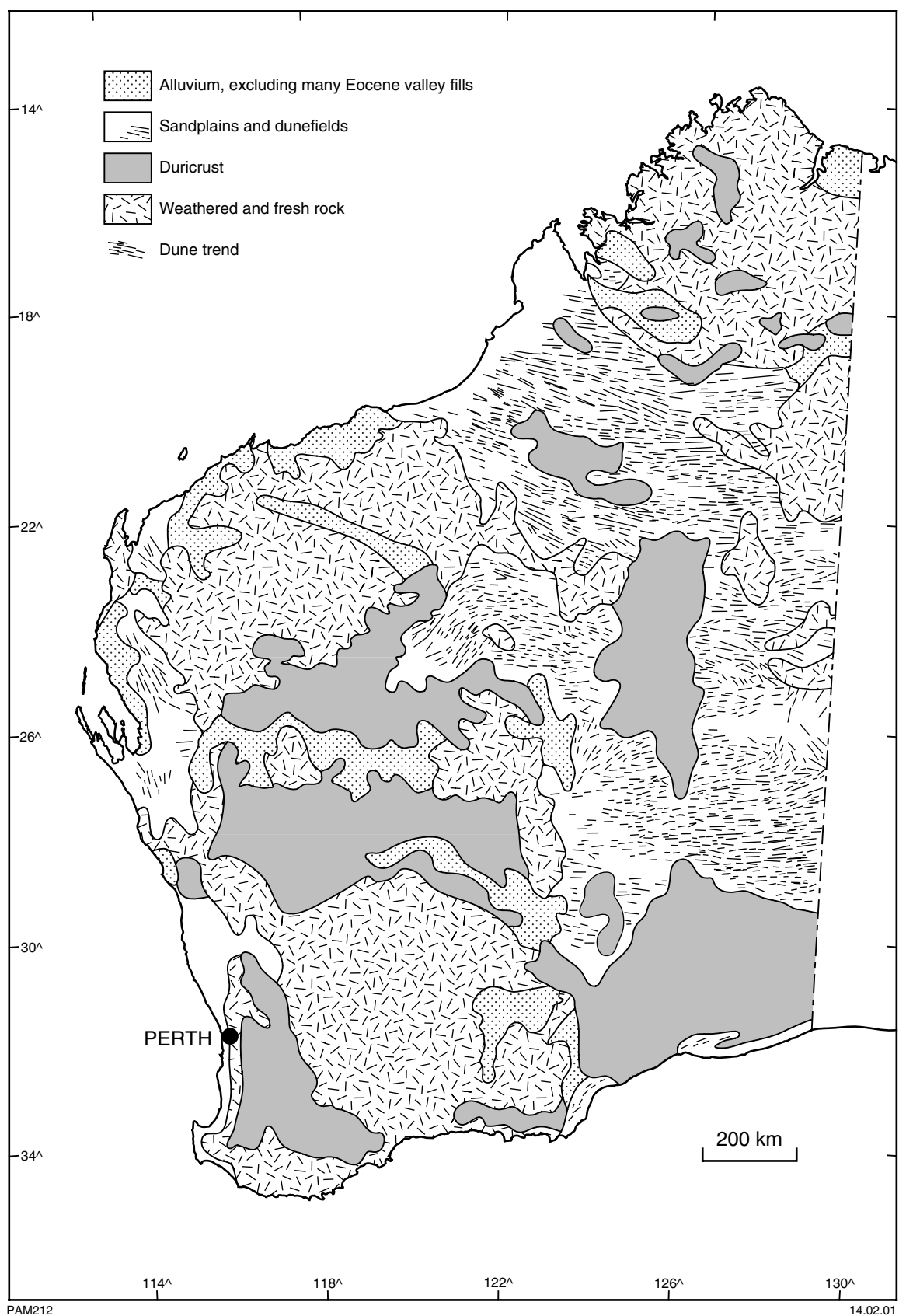


Figure 1. Generalized distribution of duricrust (ferruginous, siliceous, and calcareous), alluvium, eolian deposits, and weathered and fresh bedrock in Western Australia. After Hocking and Cockbain (1990, fig. 6-1)

Table 1. Definitions of regimes in the RED scheme, adapted from Anand et al. (1993a,b)

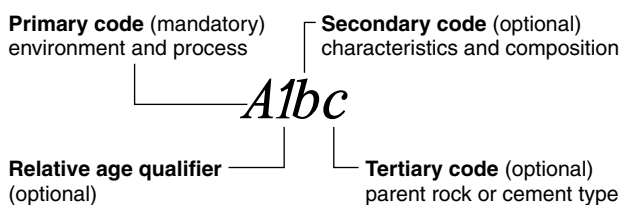
<i>Regime</i>	<i>Characteristics</i>	<i>Examples</i>
Residual	Remnant, reworked, or degraded materials derived from, and situated on, an ancient weathered land surface	Sand above granitic plateaus, duricrust-capped mesas, and siliceous cappings on the edges of breakaways
Erosional	Areas of erosion and removal of material to a level where the mottled zone, clay zone, saprolite, or bedrock are exposed, concealed beneath thin soil, or concealed beneath locally derived, associated sediments	Scattered to abundant rock exposures and areas of relatively high relief, often covered with poorly sorted stony debris
Depositional	Widespread sediments that are increasingly reworked and redistributed relative to the residual or erosional source. Depositional deposits can be many metres thick	Sheetwash plains, colluvial fans, saline playas, sandplains, and drainage channels

Erosional, and Depositional (RED scheme; Table 1; also see Fig. 1). Their classification was formulated in the arid interior of Western Australia, where an extensive, deeply weathered mantle above bedrock has been subsequently modified by erosion and deposition to form a variety of regolith types. Fundamental to their approach is the recognition of regolith–landform mapping units, which are areas characterized by a particular association of regolith materials, bedrock geology, and landforms. The GSWA classification extends the approach of Anand et al. (1993a) by expanding the depositional regime into its constituent categories (e.g. lakes, streams, and slope deposits), and specifies compositional and provenance attributes using optional secondary and tertiary codes.

Classification system

Regolith materials maps result from the synthesis of ground observations and remotely sensed data from sources such as aerial photographs and Landsat imagery, and airborne radiometrics and magnetics, although the balance of direct observation and remote data interpretation varies between both maps and map series. A uniform regolith classification scheme for geological maps of Western Australia should be objective, simple, and logical, but also flexible enough to allow a detailed regolith subdivision when required. The scheme should also be compatible with published regolith classifications on GSWA maps wherever possible, and complement established formal lithostratigraphic nomenclature applied to named rock units.

Environment of formation and process (landform setting), composition, and relative age emerged as the most significant criteria for displaying regolith on most GSWA maps. This information is presented using a primary code letter for landform (Table 2), which can be subdivided using a series of subscripts (Table 3). A relative age number (increasing from 1) can be used where more than one generation of regolith is distinguished (see **Regolith age**). An optional secondary code can be used to designate regolith composition (Table 4), and an optional tertiary code indicates either parent rock type or cement (Table 5).



The primary, secondary, and tertiary codes summarize a broad range of environment and process plus compositional information. More detail or greater precision is available through subscript qualifiers.

A1abbc

Each subscript qualifier (*a*, *b*, and *c*) has a fixed position in the code string, and relates only to the preceding primary, secondary or tertiary code (*A*, *b*, and *c* in the above example). Thus, any regolith code could have a maximum of six letters (three of which are subscripted) plus one relative age qualifier. Only the primary code, describing the broad environmental setting or process, is compulsory. For universality, the primary, secondary, and tertiary codes, and many qualifiers, are predefined. These are presented in Tables 3 to 5. Additions to these codes are inevitable, and should be submitted to the GSWA Chief Geoscientist or the Terrane Custodian (Regolith). This Record presents some recent changes and additions.

GSWA produces an increasing number of products in digital form, and digital databases have taken on more importance. As such databases cannot store certain character attributes (including subscripted codes and italic characters), and some codes are used in both regolith and lithostratigraphic nomenclature (e.g. 'A' as a primary regolith code, and an Archean age qualifier in lithological coding), it has been necessary to develop a system for unambiguous database storage of map codes. In Tables 2–5, each code is shown with its equivalent database code. To distinguish a regolith code from a lithostratigraphic code, the former is prefixed by an underscore ('_'), and non-subscripted codes are prefaced by a hyphen ('-'). Codes qualified by a subscript are not separated. For example, iron-rich alluvium, *Af*, has the database code *_Af*, whereas an alluvial fan deposit (*A_f*) has the database code *_Af*.

Table 2. Primary regolith codes for GSWA maps

<i>Primary landform code</i>	<i>Environment and process</i>	<i>Notes</i>
R	Residual or relict	Remnant material overlying an ancient land surface. Residual material is derived by in situ weathering and shows no evidence of having undergone significant transport. Relict material comprises deposits of uncertain origin, either transported or residual, or a combination of both. The term relict should not be used if the original depositional process can be determined. In such cases the appropriate primary code (e.g. A, C, W), with a relative age qualifier, should be used instead
X	Exposed	Used for rock (optional) and weathered rock. Includes subcrop and bouldery lag
C	Colluvial	Proximal mass-wasting deposits grading into sheetwash with a significant to perceptible slope
W	Sheetwash	Distal slope deposits (including sheetflood) where the gradient is minimal, and drainage is not clearly defined
A	Alluvial/fluvial	Alluvium in channels and floodplains. Includes deltaic deposits
L	Lacustrine	Inland lakes, dune and playa terrain, and some coastal lakes. Includes saline and freshwater playas and claypans, and minor eolian deposits directly associated with the lake system (e.g. fringing gypsiferous dunes)
E	Eolian	Eolian dunes, interdune areas, and sandplain
S	Sandplain	May be of mixed origin, including residual, sheetwash, and eolian sands
B	Coastal (wave-dominated)	Beaches, beach ridges, barrier bars and lagoons, and back-beach dunes, coastal cliffs and other erosional features (e.g. blowouts)
T	Coastal (tide-dominated)	Intertidal and supratidal flats and channels, estuaries, and mangrove flats
M	Marine	Subtidal, shoreface, and offshore marine deposits such as coralgal reefs, shell banks, and sea-grass banks
<hr/>		
V	Valley	Higher level category; includes lacustrine, alluvial, floodplain, sheetwash, and colluvial
K	Coastal	Higher level category; includes wave- and tide-dominated coastal, and marine
D	Depositional	Higher level category; includes all depositional systems

An Archean felsic volcanic rock is database coded as Af. Residual, iron-cemented pyritic carbonaceous material (i.e. $R_r p_i$) is coded $_Ri-ry-i$ in the database.

Landform codes (primary level)

The primary landform code (Table 2) specifies the environment (landform position) and/or process responsible for the formation or deposition of the regolith (e.g. alluvial, lacustrine, or tidal coastline). This is determined by identifying the slope and shape of the landscape, and the material present. Following from this is an assessment of whether the regolith reflects the current (active) climatic regime or is a relict of an older regime (Fig. 2). Most but not all relict features will be undergoing erosion. Patterns on aerial photographs and satellite images, remotely sensed geophysical data, and digital elevation models (DEMs) can all assist field observations in mapping these features.

Eleven primary code letters identify the dominant environment or process: *R* (residual or relict), *X* (exposed), *C* (colluvial), *W* (sheetwash), *A* (alluvial), *L* (lacustrine), *E* (eolian), *S* (sandplain; mixed and eolian origins), *B* (beach, or wave-dominated coastline), *T* (tide-dominated coastline), and *M* (marine). Three other letters are reserved for higher level groupings: *V* (valley), *K* (coastal), and *D* (depositional). These and other relevant terms are

explained in the Appendix and Table 2. On 1:100 000- and 1:250 000-scale Geological Series maps, the order of the legend boxes should be as above and in Table 2, unless there are compelling extenuating reasons — such as stratigraphic position — for change. Residual or relict (*R*), exposed (*X*), and depositional (*D*) follow Anand et al.'s (1993a,b) RED scheme. The expansion of depositional (*D*) into nine codes corresponds broadly to the types of transported regolith found on GSWA maps.

The choice of primary code is largely determined by the amount and type of information available. Note that *R* is used for both residual or relict material. ‘Residual’ is used where regolith is a product of in situ weathering. ‘Relict’ is used for landforms (e.g. mesas) where regolith is of uncertain origin, either transported or residual. For relict material, in which the original process of formation *can* be determined, the unit should be classified with another appropriate primary code. For example, a dissected portion of an old alluvial terrace, should be classified as an older generation of alluvium or valley deposit (*A2*, *A3*, *V2*, etc).

Landform code qualifiers

Optional subscripts can be used to achieve greater discrimination or precision for primary codes. The

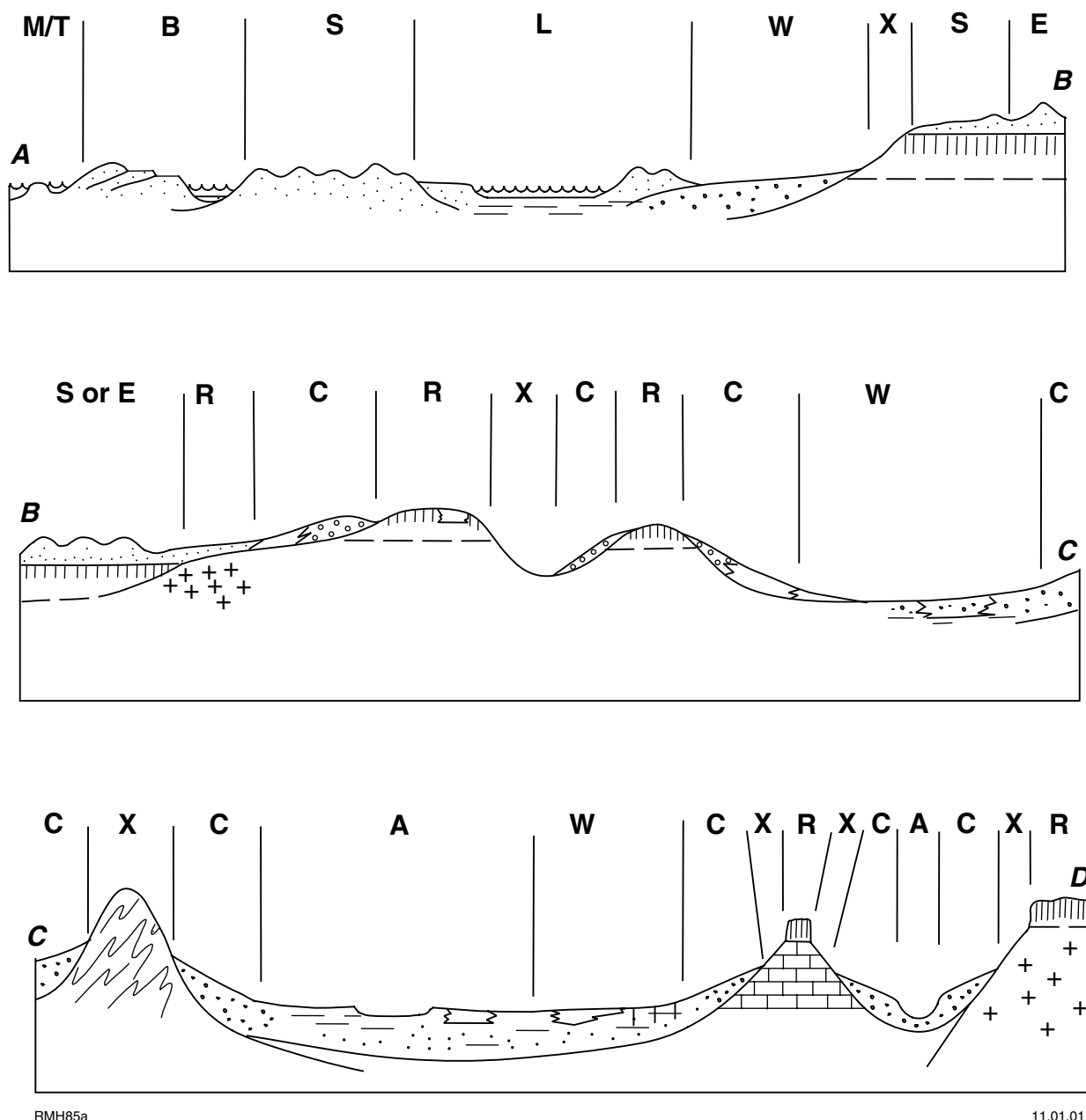


Figure 2. Diagrammatic relationships of regolith units in Western Australia, showing likely primary regolith codes (as listed in Table 2)

meaning of a subscript is set by its associated primary code, as shown by the examples in Table 3. Common usage of subscript letters between the primary landform elements is preserved where possible, but differences will arise. The system of subscript qualifiers also allows a summary of textural information, mostly grain size, to be shown on the map. This can be achieved where the information is specific to a certain landform and process sub-unit, as in an alluvial channel, where it would be possible to distinguish both sandbars (A_s) and gravel bars (A_g) on the basis of their morphology as well as grain size. Some code subscripts are based on McDonald et al. (1990), whereas others are from Pain et al. (in prep.).

Regolith age

The age of regolith is commonly poorly constrained where marine sediments do not interfinger, and parts of the regolith (particularly relict) could be older than Cenozoic. On past GSWA maps, unconsolidated regolith generally has been designated as Quaternary whereas relict or residual material, or deposits known or suspected to include a significant thickness of both Quaternary and older Cenozoic material, have been grouped as undivided Cenozoic.

Because of the poor constraints on the absolute age of many regolith units (but see Pillans, 1998a,b), absolute age

Table 3. Landform (primary code) qualifiers

<i>Primary landform or process</i>	<i>Landform element or pattern</i>	<i>Primary code, and subscript code</i>	<i>Database code</i>
Residual or relict		R	_R
	In situ weathered (residual)	R _i	_Ri
	Duricrust (residual or relict)	R _r	_Rr
	Sand (residual or relict)	R _s	_Rs
	Transported (relict)	R _t	_Rt
Exposed		X	_X
	Erosional plain (<9 m relief)	X _p	_Xp
	Rise (9–30 m relief)	X _r	_Xr
	Low hill (30–90 m relief)	X _l	_Xl
	Hill (>90 m relief)	X _h	_Xh
	Escarpment	X _e	_Xe
	Badlands	X _b	_Xb
Colluvium (proximal slope)		C	_C
	Colluvial fan	C _a	_Ca
	Cliff-foot slope	C _c	_Cc
	Pediment	C _e	_Ce
	Footslope	C _f	_Cf
	Rejuvenated pediment	C _j	_Cj
	Landslide	C _l	_Cl
	Pediplain	C _p	_Cp
	Scarp-foot slope	C _s	_Cs
	Talus	C _t	_Ct
Sheetwash		W	_W
	Transitional zone between pediment and transported regolith	W _e	_We
	Sheetflood fan	W _f	_Wf
	Playa, pan	W _p	_Wp
	Scarp-foot slope	W _s	_Ws
Alluvial		A	_A
	Alluvial plain	A _a	_Aa
	Stream bed	A _b	_Ab
	Stream channel	A _c	_Ac
	Drainage depression/swale	A _d	_Ad
	Delta	A _e	_Ae
	Floodplain	A _f	_Af
	Gravel bar	A _g	_Ag
	Channel bench	A _h	_Ah
	Floodplain with numerous claypans	A _i	_Ai
	Stream bank	A _k	_Ak
	Levee	A _l	_Al
	Meander plain	A _m	_Am
	Backplain	A _n	_An
	Playa, pan	A _p	_Ap
	Stream bar	A _r	_Ar
	Sandbar	A _s	_As
	Terrace	A _t	_At
	Superficial channel	A _u	_Au
	Fan/flood-out	A _v	_Av
	Swamp	A _w	_Aw
	Oxbow	A _x	_Ax
	Ovoid depression in eolian sandplain	A _y	_Ay
Lacustrine		L	_L
	Fringing dunes	L _d	_Ld
	Freshwater lake deposits	L _f	_Lf
	Fringing bedded deposits	L _g	_Lg
	Lake, excluding fringing deposits	L _l	_Ll
	Dune and playa terrain	L _m	_Lm
	Playa	L _p	_Lp
	Saline lake	L _s	_Ls
	Swamp deposits around lakes	L _w	_Lw
	Subcropping bedrock in lake	L _x	_Lx
Eolian		E	_E
	Parabolic dunefield	E _a	_Ea
	Blow-out	E _b	_Eb
	Dunefield	E _d	_Ed

Table 3. (continued)

Primary landform or process	Landform element or pattern	Primary code, and subscript code	Database code
	Dune	E _c	_Ee
	Longitudinal dunefield	E _l	_El
	Mobile dune	E _m	_Em
	Net-like dunefield	E _n	_En
	Sand and playa terrain	E _p	_Ep
	Eolian sandplain	E _r	_Er
	Sandplain overlying alluvial-playa plain	E _s	_Es
	Eolian veneer over colluvium and/or alluvium	E _t	_Et
	Lunette	E _u	_Eu
	Interdune pavements	E _v	_Ev
	Swampy swale	E _w	_Ew
	Stabilized dune	E _z	_Ez
Sandplain; residual, uncertain, and mixed origin		S	_S
	Blow-out	S _b	_Sb
	Dune	S _d	_Sd
	Gravel deflation pavement	S _g	_Sg
	Longitudinal dunefield	S _l	_Sl
	Net-like dunefield	S _n	_Sn
	Sand and playa terrain	S _p	_Sp
	Undulating	S _u	_Su
Coastal (wave-dominated)		B	_B
	Beach (foreshore and backshore)	B _b	_Bb
	Cliffs	B _c	_Bc
	Foredune	B _d	_Bd
	Foreshore	B _f	_Bf
	Backshore	B _k	_Bk
	Back-barrier lagoon	B _l	_Bl
	Mobile dunes	B _m	_Bm
	Boulder beach	B _o	_Bo
	Beach ridge plain	B _r	_Br
	Storm beach gravels	B _s	_Bs
Coastal (tide-dominated)		T	_T
	Tidal bar, in channel	T _b	_Tb
	Tidal channel (subtidal base)	T _c	_Tc
	Tidal delta	T _d	_Td
	Estuary	T _e	_Te
	Tidal flat (intertidal and supratidal)	T _f	_Tf
	Chenier plain	T _h	_Th
	Intertidal flat	T _i	_Ti
	Lagoon	T _l	_Tl
	Mangrove flat	T _m	_Tm
	Superficial channel (intertidal)	T _s	_Ts
	Supratidal flat	T _u	_Tu
Marine		M	_M
	Coral reef	M _c	_Mc
	Shell bank	M _k	_Mk
	Plain, nearshore	M _n	_Mn
	Plain, offshore	M _p	_Mp
	Reef flat, backreef, or rock flat	M _r	_Mr
	Shoreface	M _s	_Ms
	Talus slope or footslope	M _t	_Mt
	Relict channel	M _v	_Mv

information is shown in the map reference but not included as a code letter in the map polygon label. This allows units to be assigned a specific age where this is known, or given an age range where dating is less precise. Where several generations of poorly dated regolith units are present, relative ages can be specified more flexibly than before,

by using a whole number (with 1 being the youngest) after the primary landform code letter; thus, the codes A1, A2, and A3 differentiate increasingly older alluvium. The rationale for assigning the number 1 to the youngest deposit is that these are usually the most widespread and easily recognized. The degree to which older deposits

Table 4. Secondary codes and qualifiers for regolith composition

<i>Secondary code</i>	<i>Composition</i>	<i>Composition qualifier</i>	<i>Database code</i>
c	clay	c _b black soil or gilgai	-cb
		c _c chlorite	-cc
		c _g glauconite	-cg
		c _k kaolin	-ck
		c _i illite	-ci
		c _m montmorillonite	-cm
		c _s smectite	-cs
d	undivided		-d
e	evaporite	e _a anhydrite	-ea
		e _g gypsum	-eg
		e _h halite	-eh
f	ferruginous	f _g gossan	-fg
		f _h hematite	-fh
		f _l limonite	-fl
		f _o goethite	-fo
g	quartzofeldspathic		-g
h	heavy mineral	h _a apatite	-ha
		h _g garnet	-hg
		h _i ilmenite	-hi
		h _l leucoxene	-hl
		h _m magnetite	-hm
		h _o monazite	-ho
		h _r rutile	-hr
		h _z zircon	-hz
k	carbonate	k _a aragonite	-ka
		k _c calcite	-kc
		k _d dolomite	-kd
		k _m magnesite	-km
l	heterogeneous		-l
m	ferromagnesian		-m
q	quartz		-q
r	carbonaceous/organic	r _c coal	-rc
		r _h humus	-rh
		r _p peat	-rp
		r _y pyritic	-ry
t	lithic (rock fragments)		-t
u	ultramafic		-u
w*	weathered		-w
x	other mineral	x _a aluminous/bauxite	-xa
		x _i mica	-xi
		x _m manganese	-xm
z	siliceous	z _o opaline	-zo

NOTE: * 'w' can also be used as a subscript qualifier for all secondary codes

can be identified will vary across the mapped area, often making it difficult to assess, at least during the early stages of mapping, how many generations are present. In this situation, if the youngest deposit is given the highest number then all labels will have to be changed each time a new 'oldest' unit is recognized. Assigning 1 to the youngest deposit should ensure that this code, at least, is more likely to remain unchanged during any subsequent re-evaluation of regolith stratigraphy. Other features of this numbering system are:

- Regolith codes without a number are undivided in terms of relative age. Units in which relative ages

can be recognized should always contain the number 1 for the youngest deposit i.e. use the sequence A1, A2, A3 and not A, A2, A3. In situations where several generations of a regolith type are recognized but where it is not always possible to assign each deposit to a particular generation, the unnumbered regolith code letter can be used as an unassigned category. For example, in areas where three generations of alluvial deposit (A1, A2, A3) are recognized, the code letter A could be used for alluvium that cannot be confidently assigned to any one of these three generations. The code list for

Table 5. Tertiary codes and qualifiers for parent rock or cement type

Code	Parent rock or cement	Qualifier	Database code
a	aluminous cement		-a
c	chemical or biochemical sedimentary deposit	c _c chert	-cc
		c _d dolomite	-cd
		c _i iron formation	-ci
		c _l limestone	-cl
		c _t diatomite	-ct
g	glacial deposit		-g
i	iron cement		-i
k	carbonate (cement)	k _g groundwater calcrete	-kg
		k _p pedogenic calcrete	-kp
l	heterogeneous		-l
m	metamorphic	m _n gneiss	-mn
		m _p pelite	-mp
		m _m psammite	-mm
		m _q quartzite	-mq
		m _s schist	-ms
o	fossiliferous		-o
p	plutonic	p _a alkali granite	-pa
		p _d diorite	-pd
		p _r gabbro	-pr
		p _g granite	-pg
		p _m monzogranite/monzonite	-pm
		p _o granodiorite	-po
		p _s syenogranite/syenite	-ps
		p _t tonalite	-pt
r	duricrust		-r
s	siliciclastic sedimentary rock	s _c conglomerate	-sc
		s _m mudstone, siltstone, shale	-sm
		s _s sandstone, arenite, wacke	-ss
u	ultramafic	u _d dunite	-ud
		u _k komatiite	-uk
		u _p peridotite	-up
		u _y pyroxenite	-uy
		u _s serpentinite/talc rock	-us
		u _t talc carbonate	-ut
v	volcanic	v _a andesite	-va
		v _b basalt	-vb
		v _d dacite	-vd
		v _r rhyolite	-vr
		v _t trachyte	-vt
		v _v volcaniclastic	-vv
w*	weathered	w _p saprolite	-wp
		w _r saprock	-wr
z	silica cement		-z

NOTE; * 'w' can also be used as a subscript qualifier for all tertiary codes

alluvial deposits in this area would therefore be A, A1, A2, A3.

- There is no implied correlation between different regolith units with the same numerical age qualifier. Conversely, regolith units which are numbered differently may be of similar age. For example, a fluvial unit labelled A2 might be younger than a colluvial deposit labelled C2. In this case A2 would be placed above C2 in the map reference. On the other hand, the unit labelled C2 might be the same

age as an older alluvial deposit A3, and, as such, would be shown alongside it on the reference. When a mapsheet comprises regolith units of both known and undetermined age, the latter are placed above the former in the map legend.

- Designating the relative age of regolith is restricted to the primary regolith code, which also avoids generation of excessively complex codes. For example, *L_d1* and *L_d2* can be used to designate younger and older dune deposits, fringing a lake

system. Alternatively, LI_d and $L2_m$ indicate that an older dune and playa terrain is found with younger fringing dune deposits. Two residual or relict carbonate units of different relative age are coded $R1k$ and $R2k$.

A broad, relative stratigraphy based on the climatic evolution of Western Australia is discussed below; this can help to establish local relationships for some regolith components.

Compositional codes (secondary and tertiary)

The compositional codes (Tables 4 and 5) are optional, but their use is encouraged where significant information is available. They are used to describe the characteristic composition (secondary code), and parent rock or cement type (tertiary code), of regolith material. In the map code, they appear to the right of the primary landform code and its qualifier. As with the landform code, they consist of a limited number of generic categories. A subscript qualifier may be used to give greater discrimination and precision or to extend the information offered. It is clear that no list of this sort will ever be complete; for example, the ‘other mineral’ category could contain a multitude of entries, but the aim is to cover most of the compositional variation seen in Western Australian regolith. Examples of the use of secondary and tertiary qualifiers (with the appropriate database codes) are given below:

Akk (_A-k-k)	Carbonate-cemented calcareous alluvium (groundwater/phreatic calcrete, generally abbreviated to Ak)
$A_p c$ (_Ap-c)	Claypan in alluvial system
Bh_z (_B-hz)	Heavy mineral-rich beach deposit (principally zircon)
Le_g (_L-eg)	Lacustrine deposit with evaporitic gypsum
Amv_b (_A-m-vb)	Alluvium derived from ferro-magnesian volcanic rock (basalt) fragments.

Note that ‘w’ is available as a qualifier for both secondary and tertiary codes, and as a tertiary code alone, to indicate weathering. The predominant usage of ‘w’ as a subscript is in areas of erosional regolith:

X_id_w (_XI-dw)	Low hill or rise of (undivided) weathered rock
X_bgp_w (_Xb-g-pw)	Badlands, composed of weathered granite
As a tertiary code, ‘w’ can be qualified to indicate the intensity of weathering:	
X_idw_p (_Xr-d-wp)	Rise of (undivided) saprolite
Xgw_r (_X-g-wr)	Quartzofeldspathic saprock.

Assigning secondary codes

Assigning secondary codes relies on estimating the proportions of components in regolith. In order to emphasize the importance of some compositional elements, secondary codes are assigned in a hierarchical fashion, as detailed in Figures 3 and 4. The most common approach is that shown in Figure 3, but where there is a need to assign a regolith composition to exposed (X) igneous or high-grade metamorphic rocks, the classification system in Figure 4 should be used. It is intended for use in regolith materials mapping, where a representation of the overall composition of the bedrock is required rather than its specific lithology. The secondary code ‘d’ (undivided) can be used to indicate either that the nature of the regolith is unknown through direct observation (e.g. undivided colluvium is Cd), or that the unit is variable over a significant area (e.g., residual unit comprising both siliceous and ferruginous duricrust).

Named lithostratigraphic units

Formally named lithostratigraphic units of Cenozoic age are common near the coast, and are also scattered through the interior of the State. For these, the conventions for coding lithostratigraphic rock units should be followed. The age of most of these units is reasonably constrained. Previously, Quaternary Q and Tertiary T , or less commonly Cainozoic (now Cenozoic) Cz , have been used to specify age. In keeping with current IUGS recommendations (Gradstein et al., 2004a,b), Tertiary is generally no longer used. Instead, Quaternary, Neogene and Paleogene are used where a more precise age than Cenozoic is possible. The series is used after an ‘N’ or ‘E’ prefix to further proscribe the age, thus: Q Quaternary, Ni Pliocene, Nm Miocene, Eo Oligocene, Ee Eocene, and Ep Paleocene. The mnemonic letters for named units follow the scheme presently being introduced for rock units on GSWA maps and datasets, with a two letter capitalized code for a group, followed by a single letter code for a constituent formation (e.g. $QKWt-kl$ on the map face, $Q-KWt-kl$ in the database for the Tamala Limestone of the Kwinana Group), or a two letter code preceded by an underscore for an ungrouped formation (e.g. $Qro-kl$ on the map face, $Q-ro-kl$ in the database for the Roe Calcarene), and a trailing code separated by a hyphen for lithology, as shown above.

Regolith units derived from named rock units are locally distinguished on GSWA maps. In such cases, the code letter used for the formation can be used as the tertiary code, analogous to the ‘parent rock or cement’, to indicate the specific named derivation. For example, colluvium derived from the Pallinup Formation (itself coded as $Ee-PLp-sl$) could be coded as $_Ct-PLp$ (data code) and $Ct-PLp$ (mapcode) if composed of fragments, or $C-d-PLp$ and $Cd-PLp$ if a more general code was sought. Limonitic wash from the Robe Pisolite ($EN-rb-cip$) could be $_W-fl-rb$ and $Wf-rb$. Potential ambiguity is avoided by the description in the map reference, and in the corresponding narrative field of the database.

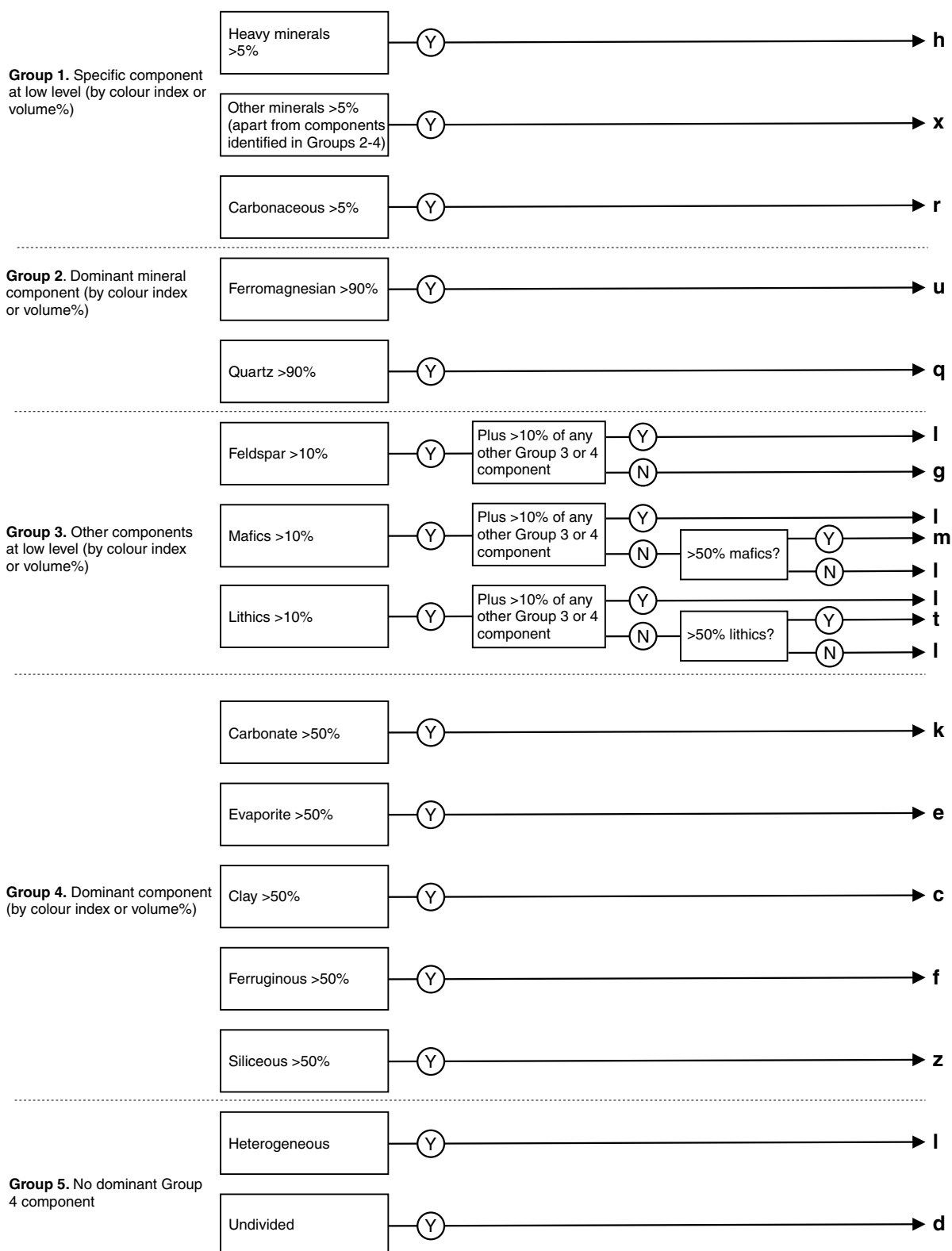


Figure 3. Selection of secondary codes (Y = yes, N = no)

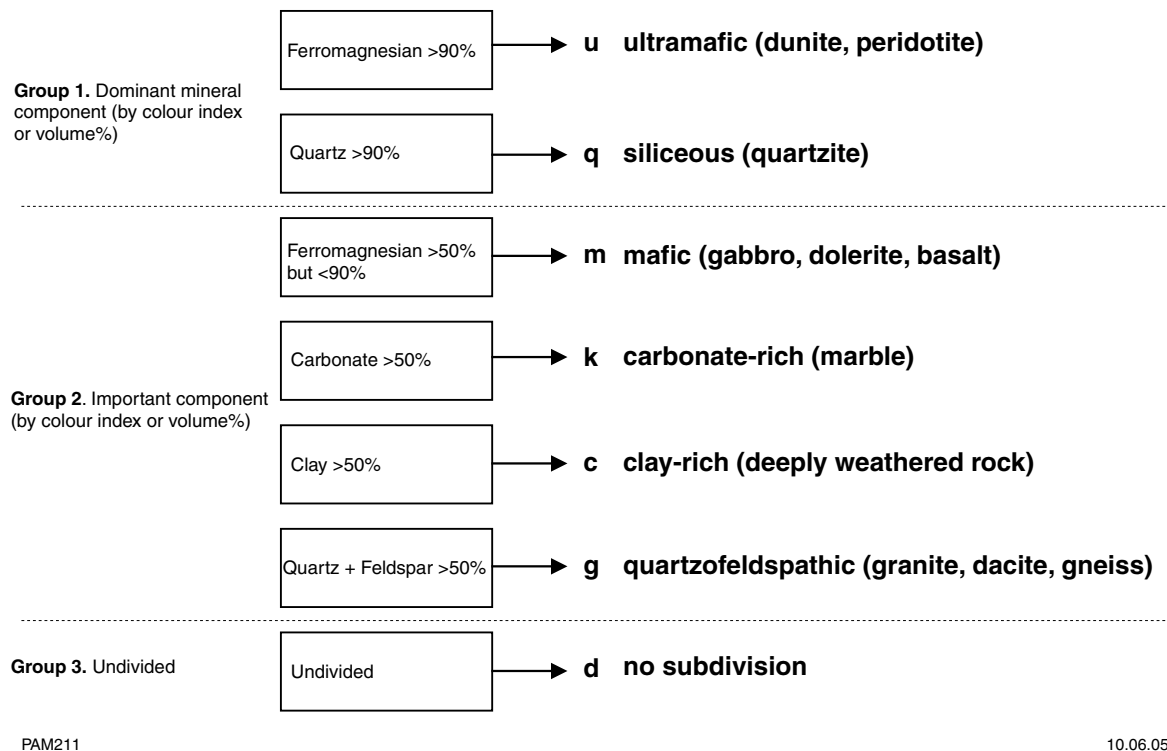


Figure 4. Selection of secondary codes for exposed regolith (X) derived from igneous and high-grade metamorphic rocks

Regolith stratigraphy

This system for regolith classification is largely descriptive and does not rely on an interpretation of age, but an understanding of the climatic development of Western Australia is necessary to utilize the scheme to its fullest, especially when two or more generations of regolith can be recognized. The relationship between two regolith units, in particular their relative ages, may be discerned if the possible or probable age of development of each can be established. In turn, the nature and relationships of two units may allow inferences about the prevailing climate of either or both. The following summary provides a guide as to where local observations on the regolith may fit in a broader climatological context.

A broad stratigraphy for the regolith of Western Australia can be established using both dated horizons and intercalations, as well as known trends in Western Australia's climate since the end of the Mesozoic (Table 6). Unfortunately, even with this broad history, the age of development of an area's landscape is uncertain in many cases. The range in possible age for some regolith components in interior areas is from Pleistocene to Mesozoic, and there are some land surfaces (fossil and exhumed) in Western Australia that are known to be of Mesozoic or Paleozoic age. Examples of these are: the present-day surface of the Devonian reef complexes of the West Kimberley, which is largely an exhumed Late Carboniferous (pre-Gondwana glaciation) surface (P. E. Playford, written comm. 1996); the Ashburton Surface in northern Australia, which is probably pre-

Jurassic (Hays, 1967) and possibly even Cambrian–Precambrian (Stewart et al., 1986); and the oldest Hamersley Surface (Pilbara region), which Twidale et al. (1985) considered to be Mesozoic. Pillans (1998b) has argued for subaerial exposure as far back as the Permian over parts of the Yilgarn Craton, and Pillans and Bateman (2000) used paleomagnetism to date regolith components near Kalgoorlie as Late Cretaceous – Early Cenozoic, Jurassic, and Early Carboniferous. Taylor and Shirliff (2000) concluded that the weathering process has been essentially continuous rather than episodic throughout the Phanerozoic. Suggestions by Finkl and Fairbridge (1979) that much of the surface of the Yilgarn Craton is of Permian or older age, refuted by van de Graaff (1981), have recently been supported by the work of Sircombe and Freeman (1999), who considered that the thick Perth Basin succession adjacent to the craton is in large part *not* derived from it, based on detrital zircon populations.

Churchill (1961, 1968, 1973) was the first to research Western Australia's climatic history. Later, Kemp (1978), and Christophel and Greenwood (1989) made advances in understanding Cenozoic climatic evolution, and a Quaternary chronology was developed through the work of Bowler (1976, 1977, 1986), Bowler et al. (1976), and Rognon and Williams (1977). Kemp (1978) used climatic models derived from sea-surface temperatures, land and sea positions, and the extent of the Antarctic ice cap correlated with palynological data to reconstruct Paleocene to Miocene climates. Christophel and Greenwood (1989) used both palynological and megafossil floras to reconstruct Eocene to Pliocene–Pleistocene climates.

Table 6. Summary of climatic and regolith changes from the Mesozoic to the present day. Absolute ages based on Gradstein et al. (2004b)

<i>Age</i>	<i>Climate</i>	<i>Regolith events</i>
Cretaceous (65–145 Ma)	–	Marine deposits in the Eucla Basin, major marine transgression over most Phanerozoic basins
Late Cretaceous – Paleocene (c. 95–55 Ma)	–	Well-developed inland drainage (paleodrainage) system. Undulating duricrust surface. Chains of playa lakes
Late Cretaceous – Early Miocene (c. 95–20 Ma)	–	Ferricrete and silcrete development in the interior of Western Australia Major paleodrainage systems active
Paleocene–Eocene (c. 60–35 Ma)	Moist, temperate-tropical	Marine deposition on coastal plains
Eocene (55–34 Ma)	–	Hamersley Surfaces with pockets of pisolitic iron that could be remnants of a pre-Eocene surface Widespread marine deposition along southern margin
Middle–Late Eocene (c. 45–35 Ma)	–	Deposition in major paleodrainages. Sea level up to 300 m above present-day Extensive silcrete and ferricrete development
Late Eocene (c. 40–35 Ma)	Beginning to dry out	Limestone in the Carnarvon Basin, deposited with numerous ferruginous pisoliths
Oligocene (c. 35–25 Ma)	Seasonally moist climate	Ferricrete and silcrete on the west coast and in the Pilbara Sea levels generally lower
Late Oligocene – Miocene (c. 25–12 Ma)	More seasonally extreme climate with significant variations in temperature. Last major transgression	Marine limestones in the Carnarvon and Eucla Basins
Late Miocene (c. 12–5 Ma)	Cooler, though still temperate	Eolian deposition in Carnarvon Basin and inner North West Shelf
Pliocene (5–2 Ma)	Prevailing continental climate appears to indicate increasing desiccation	Much pedogenic calcrete development Lacustrine carbonates of the Lawford and Nadarra Formations developed in stagnant drainages. Eolian sands and soils on the top of Kennedy Range and similar plateaus
Early–Middle Pleistocene	Predominantly dry with slightly wetter periods. Exposure of the continental shelf during glacial periods	Development of thick coastal dunes (Tamala Limestone and equivalents). Remnants of inland dunefields are preserved locally Calcrete formation continued, as did dissection of pre-existing calcrete surfaces
Late Pleistocene (more than 40 000 years BP)	Marginally drier and probably cooler than today	Dunes presumably active in Western Australia. Extensive alluvial deposition in the flood-dominated, arid environment of the Geraldton area
40 000 – 30 000 years BP	Onset of the last major glacial advance. Significantly wetter climate	High water levels in lakes and increased fluvial activity
25 000 – 15 000 years BP	Last glacial maximum	Lakes dried completely. Lunette development around playas was completed. Major unconsolidated dunefields of Western Australia developed
15 000 years BP – present-day	Transition from intense arid conditions to humid conditions	Mainly erosional
About 10 000 years BP	Temperatures slightly higher and rainfall substantially higher than today	Mainly erosional

Playford (2001) argued that the distribution of glacial landforms showed that much of Australia and parts of Gondwana were covered by thick ice sheets during the Early Permian.

Much of the following summary is drawn from a review by Cockbain and Hocking (1990).

Late Mesozoic – Early Cenozoic

In the Paleocene and Eocene, Western Australia had a moist, temperate to tropical climate. Australia and an ice-free Antarctica were still linked in the Paleocene, via Tasmania, and lay in high southern latitudes (Kemp, 1978). The oceans around Western Australia at these latitudes were warmer than those of today. High evaporation over this warmer sea surface resulted in deep inland penetration of rain-bearing westerly winds from the Indian Ocean. The climate would have been much warmer and wetter than today, and more typical of tropical to subtropical regimes (Churchill, 1973). Marine deposition extended onto the coastal plains in two depositional episodes: Paleocene – Early Eocene, and Middle–Late Eocene. Sea level was about 300 m above the present-day level in the Middle–Late Eocene.

Marine deposits of Cretaceous age in the Bight Basin and Cenozoic age in the overlying Eucla Basin indicate that a westward-opening gulf existed along Western Australia's southern margin in the Cretaceous, prior to complete separation of Antarctica and Australia in the Eocene (McGowran, 1973, 1978). Fed by warm Indian Ocean waters, this gulf would have had a significant effect on the climate of southern Australia by producing summer storms that penetrated far inland (Kemp, 1978). Clarke et al. (2003) have carried out a detailed study into the Eocene stratigraphy of the Eucla, Bremer, and Poldas Basins in Western and South Australia. They argued for a single depositional basin (which they termed the Eucla Basin) whose Eocene sediments were deposited in two transgressive episodes. Terminology here follows Bradshaw et al. (2003), who rationalized basin nomenclature in Western and South Australia, placed Mesozoic sediments in the Bight Basin and Cenozoic sediments in the Eucla Basin, and included the Cenozoic sediments of the Bremer Basin in the Eucla Basin.

Inland, a well-developed drainage system (van de Graaff et al., 1977) was active over a land surface that developed in the Late Cretaceous or Paleocene (Fig. 5). The drainages were active prior to the Late Eocene, and significant flow ceased before the Late Miocene. They are outlined by undulating duricrust surfaces and by chains of playa lakes. Some drainage is now internal but, when active, all the networks drained externally. The present internal drainages were shown by van de Graaff et al. (1977) to have been affected by a gentle Cenozoic epeirogeny after they became inactive.

Extensive silcrete and ferricrete developed approximately coevally (van de Graaff, 1983) during the Middle to Late Eocene, although in some areas duricrusts were formed earlier. Van de Graaff et al. (1977) and

Jackson and van de Graaff (1981) argued that ferricrete and silcrete in the interior of Western Australia developed while the major drainage systems were active. This gives a period of formation that spanned the Early Cenozoic, and may have extended from Late Cretaceous to Early Miocene. Twidale et al. (1985) suggested that the earliest of the Hamersley Surfaces (their 'upland surface', stripped in the Eocene) contained pockets of pisolitic iron that could be remnants of a pre-Eocene laterite surface.

Deposits in the major paleodrainages of Western Australia are primarily Eocene, and are little dissected except in the Pilbara area. Adjacent to the Pilbara, Late Eocene limestone in the Carnarvon Basin contains numerous ferruginous pisoliths, but younger units do not. This suggests that Western Australia as a whole was beginning to dry out in the Late Eocene, and that major drainages in the interior mostly had stopped flowing regularly by the latest Eocene. However, Oligocene ferricrete and silcrete on the west coast (Hocking et al., 1987) and in the Pilbara (Butt, 1985) indicate a seasonally moist climate.

Middle Cenozoic

Circum-polar circulation of ocean water was initiated during the Oligocene as Australia continued to move further northward, away from Antarctica (Kemp, 1978). This drift continued during the Miocene. This, and the growing Antarctic ice cap, caused a deterioration to a more seasonally extreme climate with significant variations in temperature. The southern half of Australia became increasingly arid as general levels of precipitation decreased and temperatures fell. The last major transgression to affect near-coastal areas took place in the Middle Miocene, when marine limestones were deposited in the Carnarvon and Eucla Basins. In the Late Miocene, the climate became even cooler, though still temperate, as the Antarctic ice sheet extended 300 to 400 km beyond its present limits (Kemp and Barrett, 1975). The Late Miocene cooling was short-lived, and temperatures in the Southern Ocean subsequently increased rapidly.

Late Cenozoic (Pliocene and Quaternary)

The climate of the Pliocene is less well known. The sparse data on the prevailing continental climate appear to indicate increasing desiccation (Bowler, 1976; Galloway and Kemp, 1977). We infer that much pedogenic calcrete development took place at this time. Other depositional episodes that probably occurred in the Pliocene are the widespread lacustrine carbonates of the Lawford Formation (Kimberley) and the Nadarra Formation (Carnarvon Basin), which developed in stagnant drainages, and the consolidated eolian sands and soils at the top of Kennedy Range and similar plateaus, which pre-date the present dissection of the plateaus.

During the Early to Middle Pleistocene the climate seems to have been predominantly dry (Galloway and Kemp, 1977), although slightly wetter periods, when

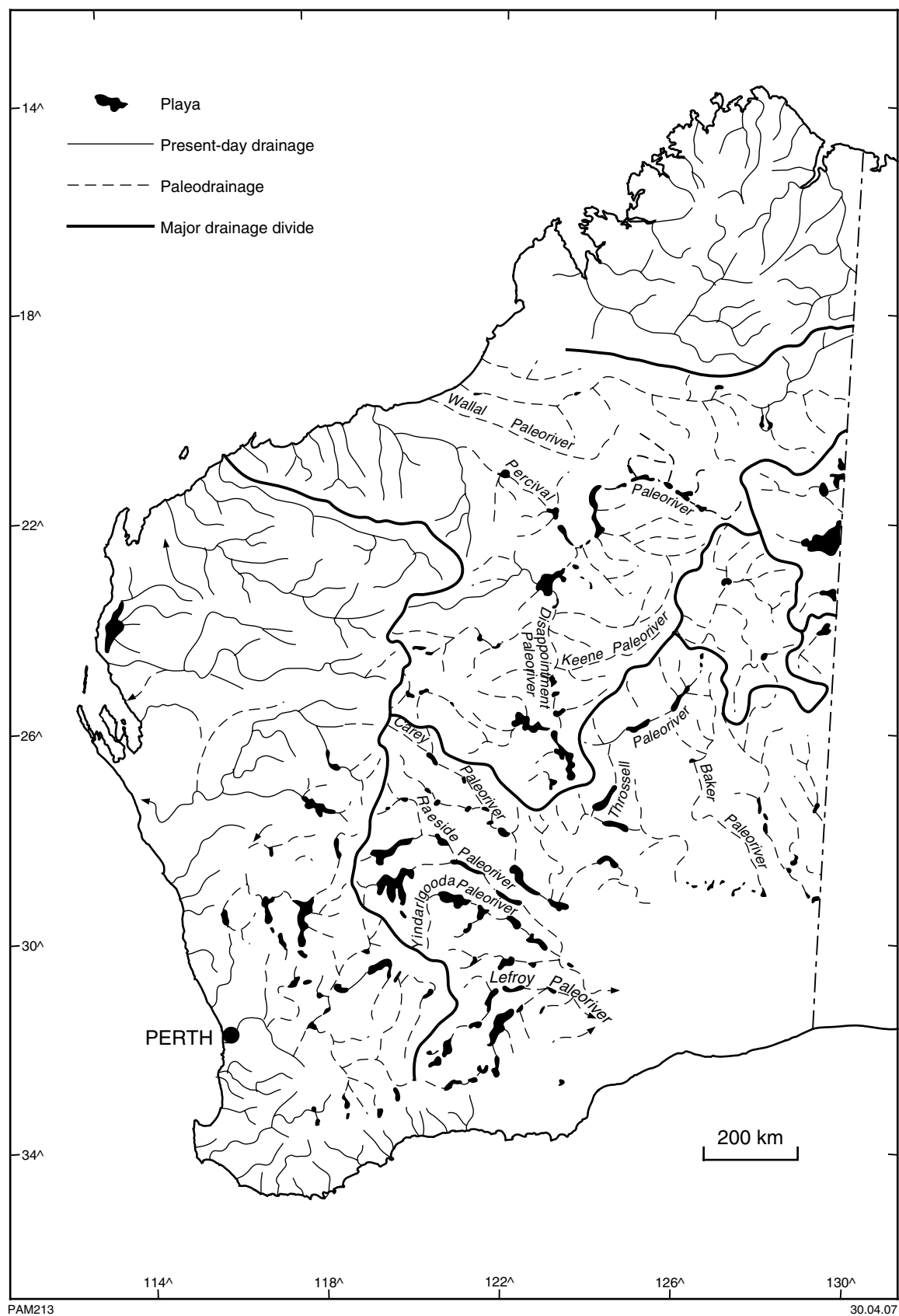


Figure 5. Paleodrainage systems in Western Australia. Modified after van de Graaff et al. (1977)

the climate was not very different from the climate of today, are inferred from paleosols in the coastal Tamala Limestone sequence. Periods of alternating aridity and humidity were caused largely by glacial maxima and minima. Near the coast, exposure of the continental shelf during glacial periods resulted in extensive, thick, coastal dunes. Remnants of inland dunefields are preserved locally. Calcrete formation continued, as did dissection of pre-existing calcrete surfaces.

In the Late Pleistocene (c. 800 000–40 000 years BP) conditions were marginally drier and probably cooler than today. In eastern Australia there are indications of eolian activity at 300 000 and 120 000 years BP (Bowler, 1976), although the extent of activity and degree of aridity is less than in the period between 25 000 and 13 000 years BP; dunes were presumably also active in Western Australia. Wyrwoll (1979) considered that aridity in central coastal areas may have begun about 80 000 years BP. Extensive alluvial deposition occurred in a flood-dominated, arid environment in the Geraldton area between 80 000 and 40 000 years BP (Wyrwoll, 1984).

The period from 40 000 to 30 000 years BP represents the onset of the last major glacial advance, during which southern Australia experienced a significantly wetter climate. Regolith processes are dominated by both high water levels in lakes and increased fluvial activity.

The last period of significant activity of dunefields was during the last glacial maximum, between 25 000 and 15 000 years BP (Bowler, 1976; Wyrwoll, 1979). Maximum aridity was between 17 500 and 16 000 years BP, when lakes dried completely, lunette development around playas was completed, and the major unconsolidated dunefields of Western Australia developed (Bowler, 1976).

Conditions generally remained dry between 15 000 and 10 000 years BP, but precipitation increased slightly as temperatures slowly rose (Bowler, 1976). This period is essentially transitional between the earlier intense arid conditions and later humid conditions nearer to those of today. About 10 000 years BP, temperatures were slightly higher and rainfall was substantially higher than today. This peak was followed by drier conditions culminating in today's climate.

Rognon and Williams (1977) disagreed slightly with Bowler's (1976) chronology by placing maximum aridity between 17 000 to 12 000 years BP, but they confirmed the general sequence. Wyrwoll (1979) noted that the climatic record for the period from 10 000 years BP to the present is very incomplete. He suggested that from 7400 to 6000 years BP the northwest underwent a humid phase, with higher rainfall than today. Between 6000 and 4500 years BP there was an arid phase in the southwest. In the extreme southwest there was higher rainfall between 6000 and 5000 years ago, followed by drier conditions until 2500 BP.

References

- ANAND, R. R., CHURCHWARD, H. M., SMITH, R. E., SMITH, K., GOZZARD, J. R., CRAIG, M. A., and MUNDAY, T. J., 1993a, Classification and atlas of regolith–landform mapping units, Exploration perspectives for the Yilgarn Craton: Australia, CSIRO Division of Exploration and Mining, Restricted Report 440R (unpublished).
- ANAND, R. R., PHAND, C., SMITH, R. E., MUNDAY, T. J., 1993b, Excursion 3. The regolith and its exploration and economic significance, in *Kalgoorlie '93: An international conference on crustal evolution, metallogeny and exploration of the Eastern Goldfields*, Excursion Guidebook compiled by P. R. WILLIAMS and J. A. HALDANE: AGSO Record 1993/53, p. 75–100.
- ANAND, R. R., and PAINE, M., 2002, Regolith geology of the Yilgarn Craton: Australian Journal of Earth Sciences, v. 49, p. 3–162.
- BOWLER, J. M., 1976, Aridity in Australia: age, origins and expression in aeolian landform and sediments: Earth Science Review, v. 12, p. 279–310.
- BOWLER, J. M., 1977, Recent developments in reconstructing late Quaternary environments in Australia, in *The Origin of the Australians* edited by R. L. KIRK and A. G. THORNE: Canberra, Australian Institute for Aboriginal Studies.
- BOWLER, J. M., 1986, Spatial variability and hydrological evolution of Australian lake basins: analogue for Pleistocene hydrological change and evaporite formation: Palaeogeography, Palaeoclimatology, Palaeoecology, v. 54, p. 21–41.
- BOWLER, J. M., HOPE, G. S., JENNINGS, J. N., SINGH, G., and WALKER, D., 1976, Late Quaternary climates of Australia and New Guinea: Quaternary Research, v. 6, p. 359–394.
- BRADSHAW, B. E., ROLLET, N., TOTTERDELL, J. M., and BORISSOVA, I., 2003, A revised structural framework for frontier basins on the southern and southwestern Australian continental margin: Geoscience Australia, Record 2003/3, 44p.
- BUTT, C. R. M., 1985, Granite weathering and silcrete formation on the Yilgarn Block, Western Australia: Australian Journal of Earth Sciences, v. 32, p. 415–432.
- CHRISTOPHEL, D. C., and GREENWOOD, D. R., 1989, Changes in climate and vegetation in Australia during the Tertiary: Review of Palaeontology and Palynology, v. 58, p. 95–109.
- CHURCHILL, D. M., 1961, The Tertiary and Quaternary vegetation and climate in relation to the living flora of South Western Australia: Perth, University of Western Australia, PhD thesis (unpublished).
- CHURCHILL, D. M., 1968, The distribution and prehistory of *Eucalyptus diversicolor*, F. Muell., *E. marginata*, Donn ex Sm., and *E. calophylla*, R. Br. in relation to rainfall: Australian Journal of Botany, v. 16, p. 125–151.
- CHURCHILL, D. M., 1973, The ecological significance of tropical mangroves in the Early Tertiary floras of southern Australia: Geological Society of Australia, Special Publication no. 4, p. 79–86.
- CLARKE, J. D. A., GAMMON, P. R., HOU, B., and GALLAGHER, S. J., 2003, Middle to Upper Eocene stratigraphic nomenclature and deposition in the Eucla Basin: Australian Journal of Earth Sciences, v. 50, p. 231–248.
- COCKBAIN, A. E., and HOCKING, R. M., 1990, Geological evolution — Phanerozoic, in *Geology and mineral resources of Western Australia*: Western Australia Geological Survey, Memoir 3, p. 750–755.
- EGGLETON, R. A. (editor), 2001, The Regolith Glossary: surficial geology, soils and landscapes: Perth, Western Australia, Cooperative Research Centre for Landscape Evolution and Mineral Exploration (CRC LEME), 144 p.
- FINKL, C. W. jnr, and FAIRBRIDGE, R. W., 1979, Palaeogeographic evolution of a rifted cratonic margin — S.W. Australia: Palaeogeography, Palaeoclimatology, Palaeoecology, v. 26, p. 221–252.
- GALLOWAY, R. W., and KEMP, E. M., 1977, Late Cainozoic environments in Australia: Australia, BMR (now Geoscience Australia, formerly Australian Geological Survey Organisation), Record 1977/40, 34p.
- GRADSTEIN, F. M., OGG, J. G., SMITH, A. G., BLEEKER, W., and LOURENS, L. J., 2004a, A new Geologic Time Scale, with special reference to Precambrian and Neogene: Episodes, v. 27, p. 83–100.
- GRADSTEIN, F. M., OGG, J. G., and SMITH, A. G., 2004b, A Geologic Time Scale: Cambridge, Cambridge University Press, 589p.
- HAYS, J., 1967, Surfaces and laterites in the Northern Territory, in *Landform studies from Australia and New Guinea* edited by J. N. JENNINGS and J. A. MABBUTT: Canberra, Australian National University Press, p. 182–210.
- HOCKING, R. M., and COCKBAIN, A. E., 1990, Chapter 6, Regolith, in *Geology and mineral resources of Western Australia*: Western Australia Geological Survey, Memoir 3, p. 591–602.
- HOCKING, R. M., LANGFORD, R. L., THORNE, A. M., SANDERS, A. J., MORRIS, P. A., STRONG, C. A., and GOZZARD, J. R., 2001, A classification system for regolith in Western Australia: Western Australia Geological Survey, Record 2001/4, 22p (now superseded).
- HOCKING, R. M., LANGFORD, R. L., THORNE, A. M., SANDERS, A. J., MORRIS, P. A., STRONG, C. A., GOZZARD, J. R., and RIGANTI, A., 2005, A classification system for regolith in Western Australia — an update: Western Australia Geological Survey, Record 2005/10, 19p (now superseded).
- HOCKING, R. M., MOORS, H. T., and van de GRAAFF, W. J. E., 1987, The geology of the Carnarvon Basin, Western Australia: Western Australia Geological Survey, Bulletin 133, 289p.
- JACKSON, J. A., (editor), 1997, Glossary of geology, fourth edition: Alexandria, Virginia, American Geological Institute, 769p.
- JACKSON, M. J., and van de GRAAFF, W. J. E., 1981, Geology of the Officer Basin, Western Australia: Australia BMR (now Geoscience Australia, formerly Australian Geological Survey Organisation), Bulletin 206, 102p.
- KEMP, E. M., 1978, Tertiary climatic evolution and vegetation history in the southeast Indian Ocean region: Palaeogeography, Palaeoclimatology, Palaeoecology, v. 24, p. 169–208.
- KEMP, E. M., and BARRETT, P. J., 1975, Antarctic glaciation and early Tertiary vegetation: Nature, v. 258, p. 507–508.
- MCDONALD, R. C., ISBELL, R. F., SPEIGHT, J. G., WALKER, J., and HOPKINS, M. S., 1990, Australian soil and land survey field handbook, 2nd edition: Melbourne, Encarta Press Pty Ltd, 198p.
- McGOWRAN, B., 1973, Rifting and drift of Australia and the migration of mammals: Science, v. 180, p. 759–761.
- McGOWRAN, B., 1978, The Tertiary of Australia, in *Stratigraphic sequences and episodic geohistory: Third Regional Conference on Geology and Mineral Resources of Southeast Asia*, Bangkok, Thailand, 1978, p. 73–80.
- PAIN, C., CHAN, R., CRAIG, M., GIBSON, D., KILGOUR, P., and WILFORD, J., in prep., RTMAP regolith database field book and users guide (draft second edition): Perth, Western Australia, Cooperative Research Centre for Landscape Evolution and Mineral Exploration (CRC LEME), viewed November 2004, <<http://crlcme.org.au/Pubs/reportsother.html>>.

- PILLANS, B., 1998a, Regolith dating methods. A guide to numerical dating methods: Perth, Western Australia, Cooperative Research Centre for Landscape Evolution and Mineral Exploration (unpublished).
- PILLANS, B., 1998b, Ancient weathering in an ancient landscape?: Canberra, Australian National University Research School of Earth Sciences, Annual Report, 1998, p. 107.
- PILLANS, B., and BATEMAN, R., 2000, Paleomagnetic dating of Phanerozoic weathering imprints, Mount Percy mine, Kalgoorlie, Western Australia, *in* Understanding planet earth: searching for a sustainable future *edited by* C. G. SKILBECK and T. C. T. HUBBLE: Geological Society of Australia, 15th Australian Geological Convention, Sydney, NSW, 2000, Abstracts, no. 59, p. 390.
- PLAYFORD, P. E., 2001, The Permo-Carboniferous glaciation of Gondwana: its legacy in Western Australia: Western Australia Geological Survey, Record 2001/5, p. 15–16.
- ROGNON, R., and WILLIAMS, M. A. J., 1977, Late Quaternary climatic changes in Australia and North Africa: a preliminary interpretation: Palaeogeography, Palaeoclimatology, Palaeoecology, v. 21, p. 285–327.
- SIRCOMBE, K. N., and FREEMAN, M. J., 1999, Provenance of detrital zircons on the Western Australian coastline — implications for the geologic history of the Perth Basin and denudation of the Yilgarn Craton: Geology, v. 27, p. 879–882.
- STEWART, A. J., BLAKE, D. H., and OLLIER, C. D., 1986, Cambrian river terraces and ridgetops in central Australia — oldest persisting landforms?: Science, v. 233, p. 758–761.
- TAYLOR, G., and SHIRTLIFF, G., 2000, Weathering: cyclical or continuous? A southern perspective, *in* Understanding planet earth: searching for a sustainable future *edited by* C. G. SKILBECK and T. C. T. HUBBLE: Geological Society of Australia, 15th Australian Geological Convention, Sydney, NSW, 2000, Abstracts, no. 59, p. 494.
- TWIDALE, C. R., HORWITZ, R. C., and CAMPBELL, E. M., 1985, Hamersley landscapes of the northwest of Western Australia: Revue de géologie dynamique et de géographie physique, v. 26, fasc. 3, p. 173–186.
- van de GRAAFF, W. J. E., 1981, Palaeogeographic evolution of a rifted cratonic margin — S.W. Australia, discussion: Palaeogeography, Palaeoclimatology, Palaeoecology, v. 34, p. 163–172.
- van de GRAAFF, W. J. E., 1983, Silcrete in Australia: geomorphological settings, textures, structures, and their genetic implications, *in* Residual deposits: surface related weathering processes and materials *edited by* R. C. L. WILSON: Geological Society, Special Publication no. 11, p. 159–166.
- van de GRAAFF, W. J. E., CROWE, R. W. A., BUNTING, J. A., and JACKSON, M. J., 1977, Relict early Cainozoic drainages in arid Western Australia: Zeitschrift für Geomorphologie, v. 21, p. 379–400.
- WYRWOLL, K. H., 1979, Late Quaternary climates of Western Australia — evidence and mechanisms: Royal Society of Western Australia, Journal, v. 62, p. 129–142.
- WYRWOLL, K. H., 1984, The sedimentology, stratigraphy and paleoenvironmental significance of a Late Pleistocene alluvial fill — central coastal areas of Western Australia: Catena, v. 11, p. 201–218.

Appendix

Glossary

alluvium	unconsolidated detrital deposit formed in a stream or floodplain; deposited by a stream or running water (adj. alluvial)	mass wasting	downslope transport of material by gravity; not dominated by water
black soil	grey to black clayey and silty soil, commonly with expansive clays; may have a gilgai pattern	mottle	segregation of subdominant colour different from the surrounding region's colour
calcrete	calcareous duricrust. Regolith carbonate accumulations, comprising variably cemented aggregates largely composed of calcium carbonate, but also including dolomite or magnesite.	pediment	gently inclined to level landform pattern of extremely low relief, commonly with a thin veneer of detritus underlain by bedrock, characteristically lying downslope from adjacent hills with markedly steeper slopes
coastal	located at or near the coast	pediplain	Level to very gently inclined landform pattern with extremely low relief and no stream channels, eroded by weakly active sheet flow and wind
colluvium	heterogeneous material of variable particle size (soil with or without rock fragments) accumulated on the lower parts of slopes. Transported by gravity, creep, sheetwash, rainwash, mudflows or solifluction	pedogenic	pertaining to soil formation
debris	loose material detached from rock masses by chemical or mechanical means, consisting of rock fragments, soil material, and sometimes organic matter	pisolith	spherical or ellipsoidal body resembling a pea in shape and limited in size between 2 and 64 mm in diameter. May have a concentric internal structure and/or a cortex or skin
deflation	removal of clay- and silt-size particles by wind action. A form of wind erosion	playa	vegetation-free, flat area at the lowest part of an undrained desert basin, commonly underlain by stratified clay, silt, or sand, and in many places by soluble salts, but in places underlain by a rock surface that has minimal sedimentary cover. Dry most of the time
detritus	loose material derived by mechanical erosion from older rocks and moved from its place of origin (adj. detrital)	regolith	layer or mantle of loose, noncohesive or cohesive rock material comprising rock wastes of all sorts
duricrust	regolith material indurated by a cement, or the cement only. Includes silcrete, ferricrete, lateritic duricrust, calcrete, gypcrete, manganocrete, dolocrete, salcrete or a combination of these	relict	surviving landform, after decay and disintegration
eluvium	regolith originating in the place where found (in situ regolith)	residual	a) feature remaining after erosion; b) material left after weathering
eolian	transported and deposited by wind	residue	accumulation of rock debris formed by weathering, essentially in place, with soluble components removed (syn. residuum)
erosional	pertaining to or produced by erosion	rumble	loose mass of angular rock fragments, commonly overlying outcropping rock; the unconsolidated equivalent of a breccia
estuarine	deposited in estuaries	sandplain	sand-covered plain of uncertain, or mixed eolian and residual, origin
ferricrete	material formed by the in situ cementation of regolith by mainly goethite and hematite	scree	loose talus; loose fragmental material lying on or mantling a slope
fluvial	produced by the action of a stream or river	sheetwash	material transported by the water of a sheetflood
gibber	stony or pebbly plain, commonly formed by deflation	silcrete	siliceous duricrust
gilgai	microrelief associated with expansive clays, characteristically with a crabhole texture	talus	loose rock fragments at the base of a steep slope, deposited chiefly by gravitational falling, rolling or sliding
hardpan	hard or impervious layer in the regolith lying at or near the surface. Resulting from cementation of soil particles by precipitation of mainly silica, with some iron oxide and carbonate	transported	carried by natural agents
lacustrine	formed in a lake, on a lake margin; or a region characterized by lakes		
lake	any inland body of water occupying a depression in the Earth's surface		
laterite	regolith showing the character of all or the upper part of a laterite profile. Usually preserved as a hard commonly ferruginous surface characterized by variable colouring due to the distribution of iron and silica. An often abused term which should be used broadly and informally		

References

- EGGLETON, R. A. (editor), 2001, The Regolith Glossary: surficial geology, soils and landscapes: Perth, Western Australia, Cooperative Research Centre for Landscape Evolution and Mineral Exploration (CRC LEME), 144p.
- JACKSON, J. A. (editor), 1997, Glossary of geology, fourth edition: Alexandria, Virginia, American Geological Institute, 769p.

**This Record is published in digital format (PDF) and is available online at:
www.doir.wa.gov.au/GSWA/publications.
Laser-printed copies can be ordered from the Information Centre for the cost of printing and binding.**

Further details of geological publications and maps produced by the Geological Survey of Western Australia can be obtained by contacting:

**Information Centre
Department of Industry and Resources
100 Plain Street
East Perth WA 6004
Phone: (08) 9222 3459 Fax: (08) 9222 3444
www.doir.wa.gov.au/GSWA/publications**