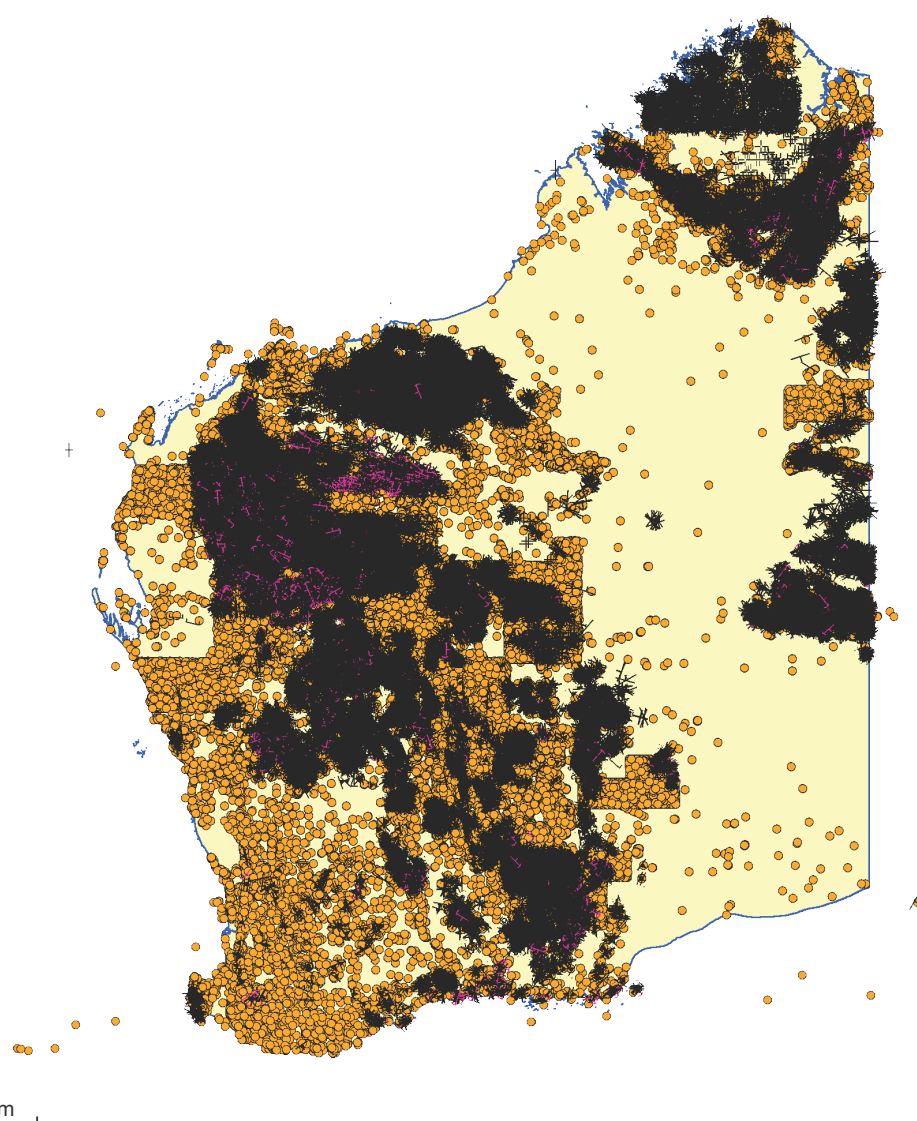


WAROX (Western Australia Rocks) is a database of the Geological Survey of Western Australia field observation sites. The database holds a rich variety of content in a complex relational structure. This includes field notes, rock types, lithostratigraphic relationships, regolith observations, measured structural data, sample details, petrography, and field and thin section photographs.

This dataset is a flat file extract of site structural measurements and sample descriptions recorded in the database in a form suitable for display in a GIS application or for textual analysis. A separate complementary extract of aggregated notes from this and other WAROX content is also available.

Survey location metadata coordinates are in GDA94 decimal degrees.



#### Statewide spatial datasets – [GDA1994]

##### Geology

##### WAROX Structures - [GDA1994]

Last Updated	Size	File Format	
20/04/2023	7.40 MB	CSV	<a href="#">Download</a>
20/04/2023	11.20 MB	ESRI Shape File	<a href="#">Download</a>
20/04/2023	9.06 MB	ESRI File Geodatabase	<a href="#">Download</a>

##### WAROX Samples - [GDA1994]

Last Updated	Size	File Format	
20/04/2023	7.67 MB	CSV	<a href="#">Download</a>
20/04/2023	12.59 MB	ESRI Shape File	<a href="#">Download</a>
20/04/2023	10.90 MB	ESRI File Geodatabase	<a href="#">Download</a>

## WAROX field observations

Enquiries to email: [gsd.dda@dmirs.wa.gov.au](mailto:gsd.dda@dmirs.wa.gov.au); Phone: +61 8 9222 3459

Free (online): go to the Data and Software Centre ([www.dmirs.wa.gov.au/datacentre](http://www.dmirs.wa.gov.au/datacentre)) >

Statewide Spatial Datasets - [GDA1994] > Geology



Government of Western Australia  
Department of Mines, Industry Regulation  
and Safety

Geological Survey of  
Western Australia

