

QUATERNARY  
TERTIARY  
PROTEROZOIC OR ARCHAIC

| Qz | Qs | Qd | Qg | Qpl | Qc |
|----|----|----|----|-----|----|
| Qz | Qs | Qd | Qg | Qpl | Qc |

| Cs | Ck |
|----|----|
| Cs | Ck |

| Ti | Ts | Tl |
|----|----|----|
| Ti | Ts | Tl |

| Ag | Agp | Agd | Agg | Agf | Agm |
|----|-----|-----|-----|-----|-----|
| Ag | Agp | Agd | Agg | Agf | Agm |

| Adi | Adw | Adm | Adj | Adv | Adu |
|-----|-----|-----|-----|-----|-----|
| Adi | Adw | Adm | Adj | Adv | Adu |

| Adi | Adw | Adm | Adj | Adv | Adu |
|-----|-----|-----|-----|-----|-----|
| Adi | Adw | Adm | Adj | Adv | Adu |

| Adi | Adw | Adm | Adj | Adv | Adu |
|-----|-----|-----|-----|-----|-----|
| Adi | Adw | Adm | Adj | Adv | Adu |

| Adi | Adw | Adm | Adj | Adv | Adu |
|-----|-----|-----|-----|-----|-----|
| Adi | Adw | Adm | Adj | Adv | Adu |

| Adi | Adw | Adm | Adj | Adv | Adu |
|-----|-----|-----|-----|-----|-----|
| Adi | Adw | Adm | Adj | Adv | Adu |

| Adi | Adw | Adm | Adj | Adv | Adu |
|-----|-----|-----|-----|-----|-----|
| Adi | Adw | Adm | Adj | Adv | Adu |

| Adi | Adw | Adm | Adj | Adv | Adu |
|-----|-----|-----|-----|-----|-----|
| Adi | Adw | Adm | Adj | Adv | Adu |

| Adi | Adw | Adm | Adj | Adv | Adu |
|-----|-----|-----|-----|-----|-----|
| Adi | Adw | Adm | Adj | Adv | Adu |

| Adi | Adw | Adm | Adj | Adv | Adu |
|-----|-----|-----|-----|-----|-----|
| Adi | Adw | Adm | Adj | Adv | Adu |

| Adi | Adw | Adm | Adj | Adv | Adu |
|-----|-----|-----|-----|-----|-----|
| Adi | Adw | Adm | Adj | Adv | Adu |

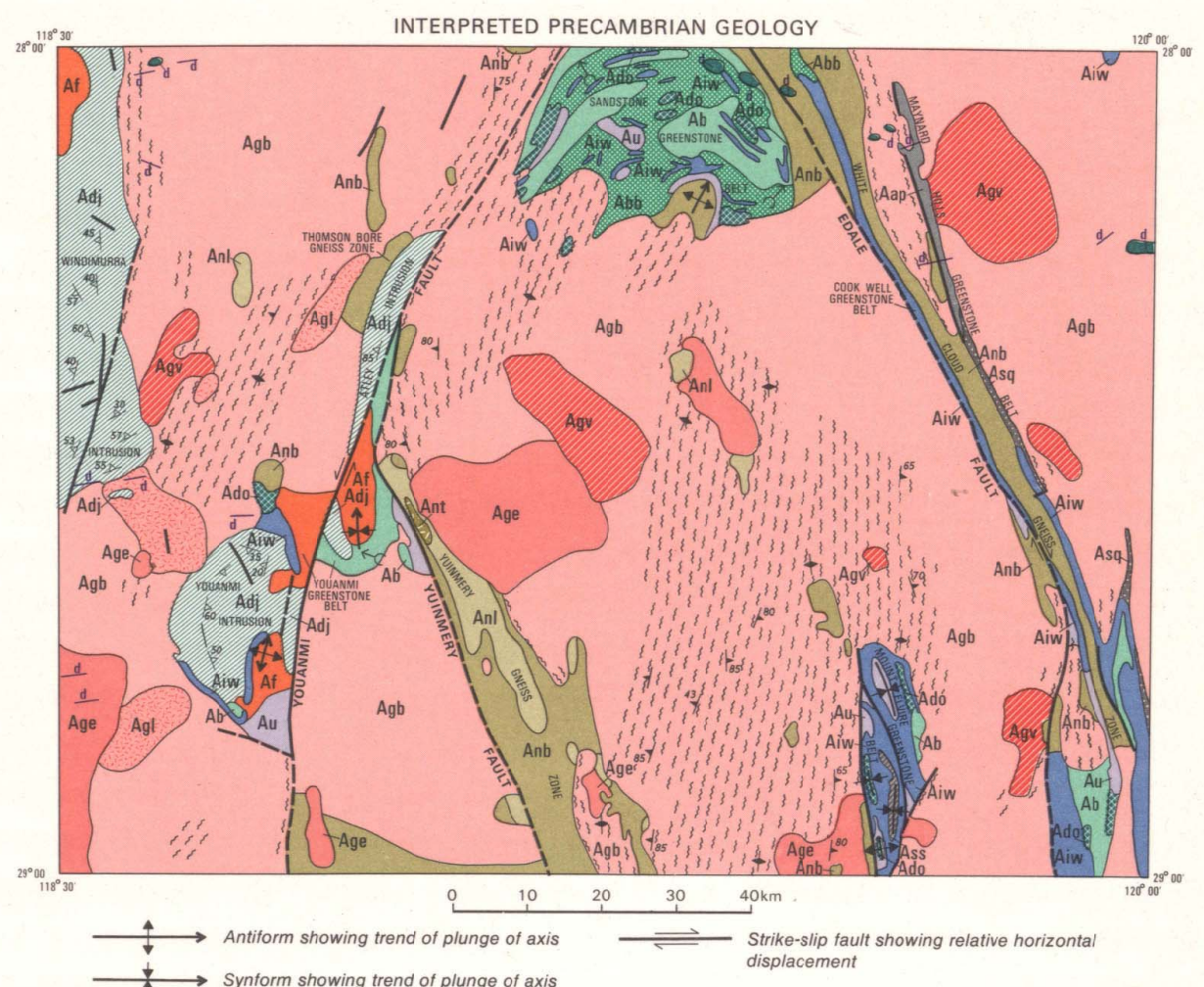
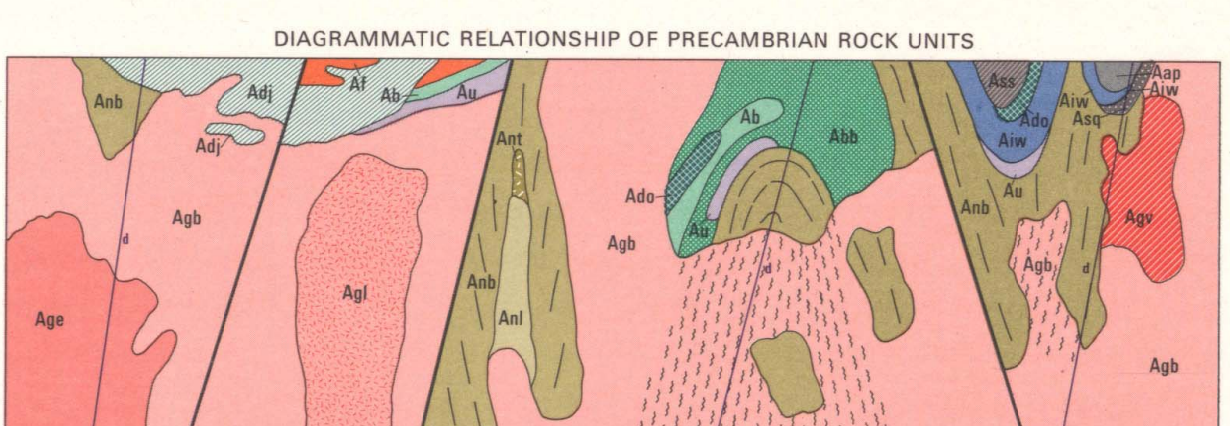
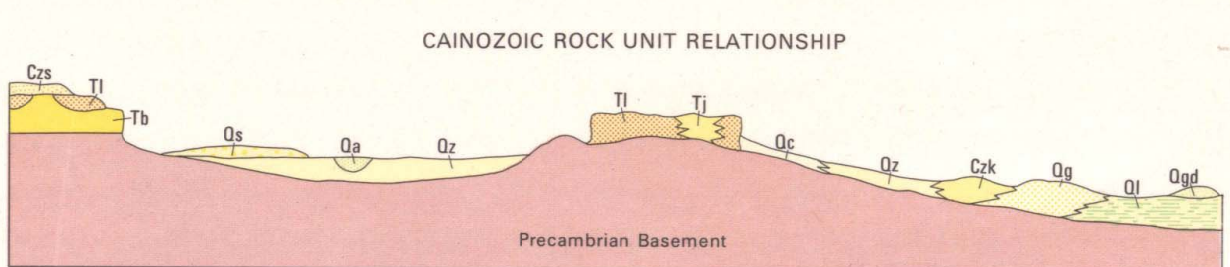
| Adi | Adw | Adm | Adj | Adv | Adu |
|-----|-----|-----|-----|-----|-----|
| Adi | Adw | Adm | Adj | Adv | Adu |

| Adi | Adw | Adm | Adj | Adv | Adu |
|-----|-----|-----|-----|-----|-----|
| Adi | Adw | Adm | Adj | Adv | Adu |

| Adi | Adw | Adm | Adj | Adv | Adu |
|-----|-----|-----|-----|-----|-----|
| Adi | Adw | Adm | Adj | Adv | Adu |

| Adi | Adw | Adm | Adj | Adv | Adu |
|-----|-----|-----|-----|-----|-----|
| Adi | Adw | Adm | Adj | Adv | Adu |

| Adi | Adw | Adm | Adj | Adv | Adu |
|-----|-----|-----|-----|-----|-----|
| Adi | Adw | Adm | Adj | Adv | Adu |



Published by the Bureau of Mineral Resources, Geology and Geophysics, Department of Resources and Energy, prepared in collaboration with the Geological Survey of Western Australia, issued under the joint authority of the Minister for Resources and Energy and the Minister for Mines, Western Australia. Base map compiled by the Division of National Mapping from aerial photography at 1:50 000 scale.

UNIVERSAL GRID REFERENCE  
TO USE A STANDARD REFERENCE ON THIS SHEET TO THE NEAREST 100 METRES  
SAMPLE POINT - LITTLE ROCKS  
1. Base contour showing 100 000 metre contour - within the first line  
2. Base contour showing 100 000 metre contour - within the first line  
3. Base contour showing 100 000 metre contour - within the first line  
4. Base contour showing 100 000 metre contour - within the first line  
5. Base contour showing 100 000 metre contour - within the first line  
6. Base contour showing 100 000 metre contour - within the first line  
7. Base contour showing 100 000 metre contour - within the first line  
8. Base contour showing 100 000 metre contour - within the first line  
9. Base contour showing 100 000 metre contour - within the first line  
10. Base contour showing 100 000 metre contour - within the first line

INDEX TO ADJOINING SHEETS  
CSE SH 50-15 SANDSTONE SH 50-16 SIR SAMUEL SH 50-17  
KIRKALLOCK SH 50-3 YOUANMI SH 50-4 LEONORA SH 50-1  
NINING SH 50-7 BARLEE SH 50-8 MONTGOMERY SH 50-5

SCHEMATIC SECTIONS  
Climatic sediments omitted  
Scale: 1/100 000

Geology 1979 by A.J. Stewart BMR  
Compiled 1979 by A.J. Stewart, I.H. Williams, P.J. Corbett  
Edited 1981 by G.W. O'Donnell, A.S. Mikolajczak  
Design by Cartography Section, BMR  
Drawn by Mercury-Walsh, Hobart, Australia  
Printed by Mercury-Walsh, Hobart, Australia

