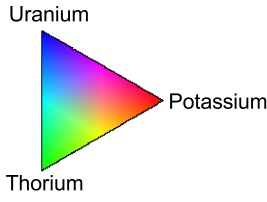
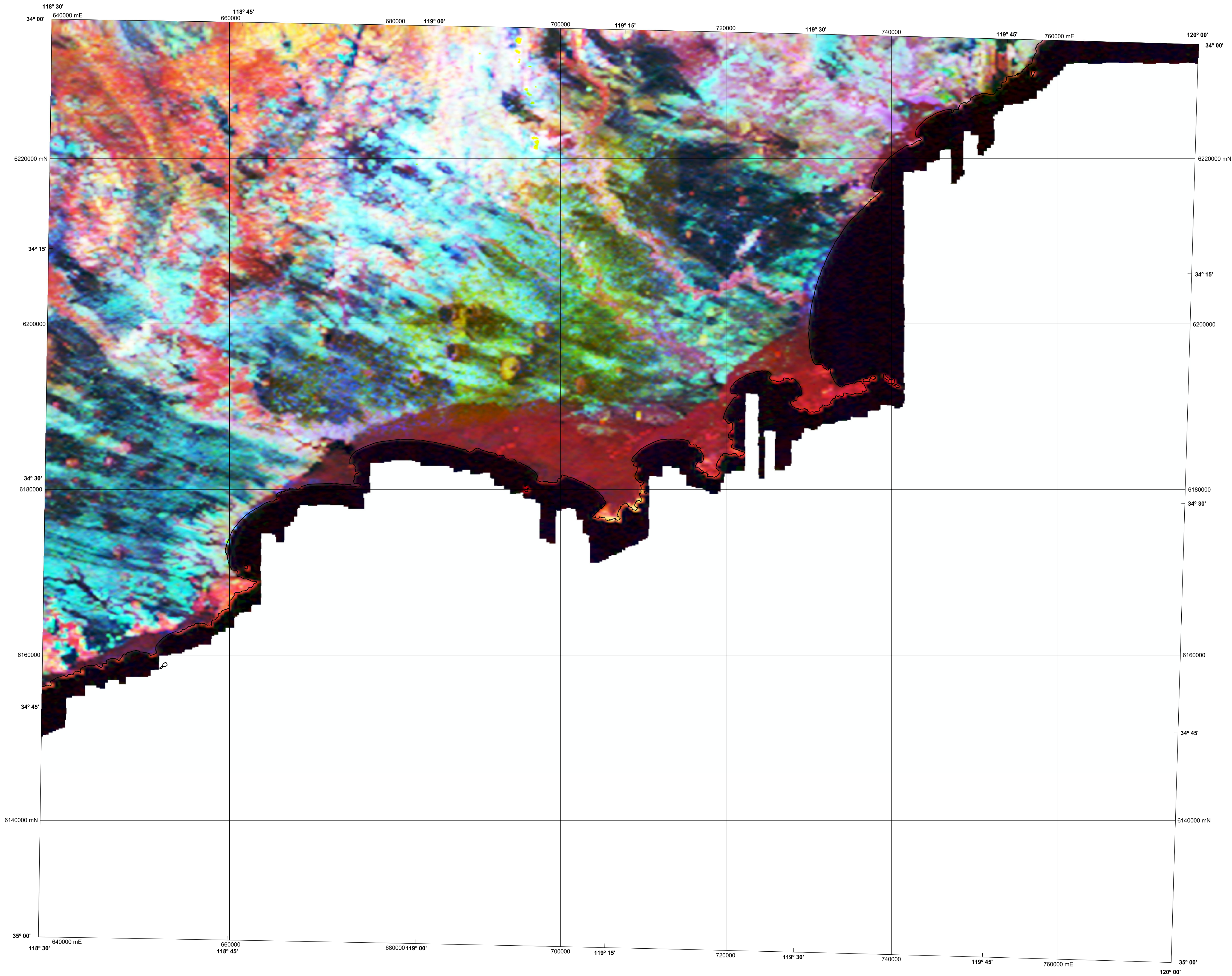


1:250 000 TERNARY RADIOMETRIC IMAGE

BREMER BAY
GEOLOGICAL SURVEY OF WESTERN AUSTRALIA

SHEET SI 50-12



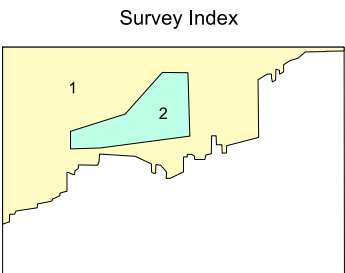
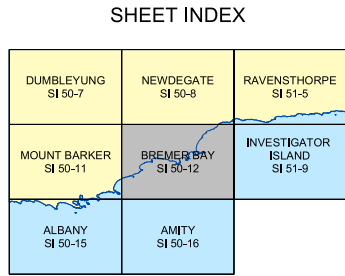
Data acquired in 2005 were merged by Geoscience Australia with private company data, flown in 1999. These data now form part of the National Airborne Geophysical Database.

Published by the Geological Survey of Western Australia. Copies are available from the Information Centre, Department of Industry and Resources, 100 Plain Street, East Perth, WA 6004. Telephone (08) 9222 3458, Fax (08) 9222 3444, www.doir.wa.gov.au

Secondary data processing R. Franklin
Image processing J. H. Watt
Cartography J. Simonetti
Geophysical Project Manager S. H. D. Howard

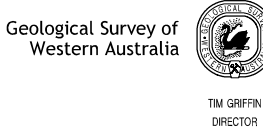
These data are available in digital form from the Sales Centre, Geoscience Australia, GPO Box 378, Canberra, ACT 2601, Telephone (02) 6249 9966, Fax (02) 6249 9982. Digital data are also available for download from Geoscience Australia, www.ga.gov.au/databases

The recommended reference for this map is:
GEOLOGICAL SURVEY OF WESTERN AUSTRALIA, 2005, Bremer Bay, W.A. Sheet SI 50-12: Western Australian Geological Survey, 1:250 000 Ternary Radiometric Image.

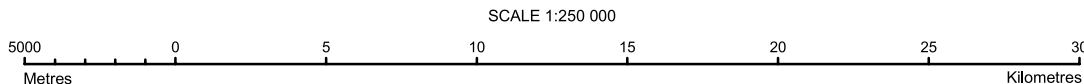


The image is compiled from the two surveys that are listed below, the areas covered by each are shown on the survey index. The grid cell size is 80 m.

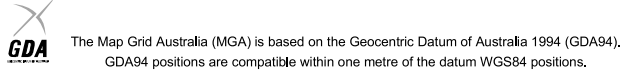
Survey ID	Survey name	Flight line spacing	Flight line direction	Ground clearance	Crystal volume	Contractor	Date	Client
1	P1067 Bremer bay	400 m	90° – 270°	60 m	33.6 litres	UTS	2005	GSWA/GA
2	Devil's Creek	300 m	0° – 180°	70 m	33.6 litres	World Geoscience	1999	BHP Minerals Ltd



NGA
PRODUCT OF THE NATIONAL
GEOSCIENCE AGREEMENT



UNIVERSAL TRANSVERSE MERCATOR PROJECTION
HORIZONTAL DATUM: GEODETIC DATUM OF AUSTRALIA
Grid lines indicate 20 000 metre interval of the Map Grid Australia Zone 50



GEOLOGICAL SURVEY OF WESTERN AUSTRALIA
TERNARY RADIOMETRIC IMAGE
Potassium, Thorium, Uranium as red, green, blue

BREMER BAY
SHEET SI 50-12

First Edition 2005
Version 1.0 - September 2005

© Western Australia 2005

WARNING: Inks are water soluble and will fade with prolonged exposure to light