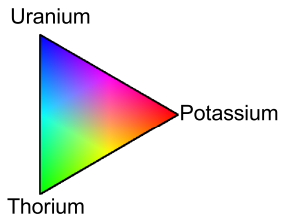
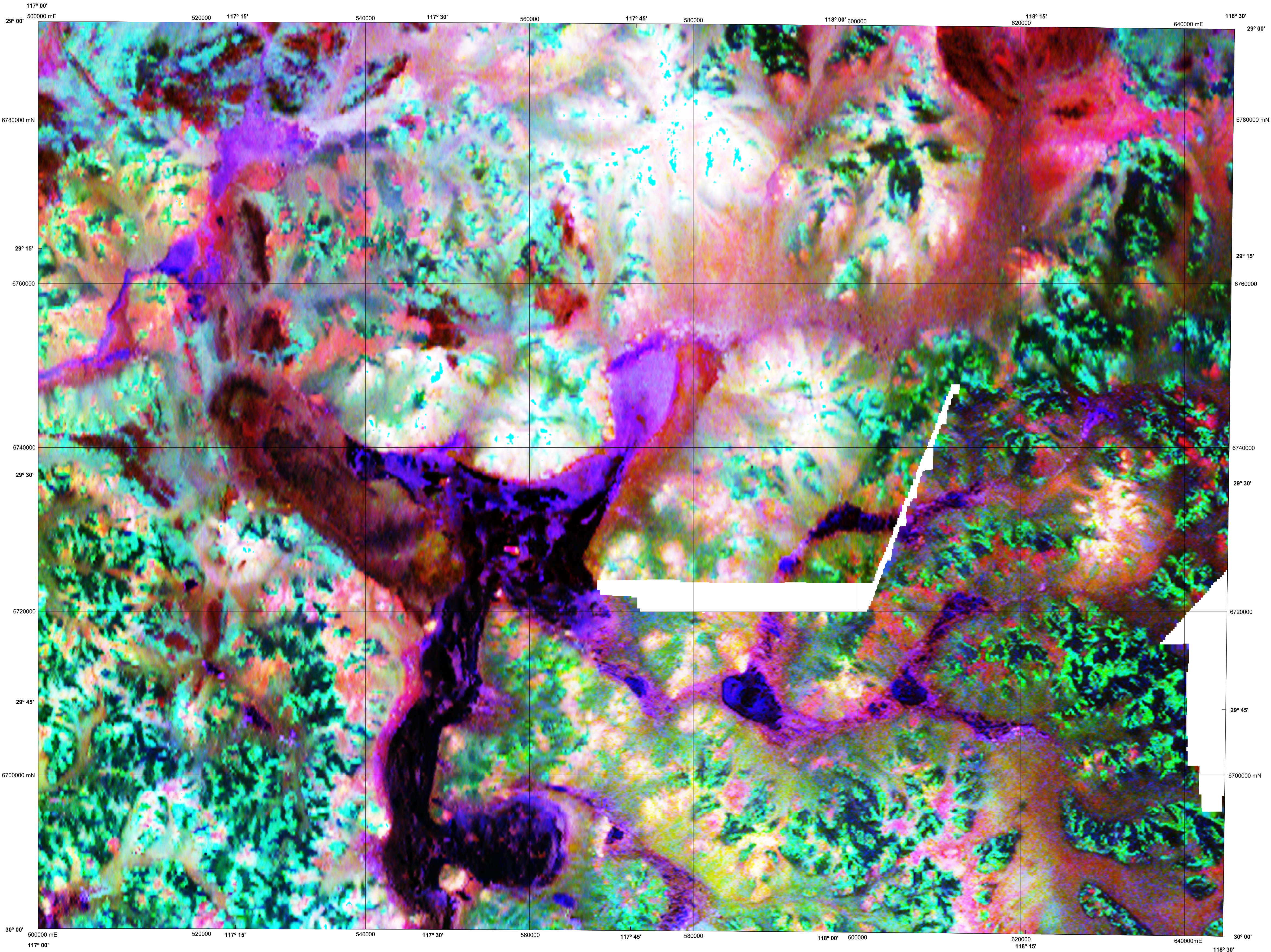


NINGHAN

GEOLOGICAL SURVEY OF WESTERN AUSTRALIA

1:250 000 TERNARY RADIOMETRIC IMAGE

SHEET SH 50-7



Data acquired in 2004 were merged by Geoscience Australia with private company data, flown in 1996. These data now form part of the National Airborne Geophysical Database.

Published by the Geological Survey of Western Australia. Copies are available from the Information Centre, Department of Industry and Resources, 100 Plain Street, East Perth, WA 6004. Telephone (08) 9222 3459, Fax (08) 9222 3444, www.doir.wa.gov.au

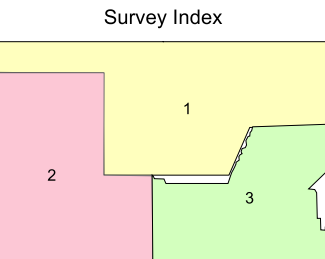
Secondary data processing R. Franklin
Image processing J. H. Watt
Cartography J. Simonetti
Geophysical Project Manager S. H. D. Howard

These data are available in digital form from the Sales Centre, Geoscience Australia, GPO Box 378, Canberra, ACT 2601. Telephone (02) 6249 9966, Fax (02) 6249 9960. Digital data are also available for download from Geoscience Australia, www.geoscience.gov.au/gadds

The recommended reference for this map is:
GEOLOGICAL SURVEY OF WESTERN AUSTRALIA, 2004, Ninghan, W.A. Sheet SH 50-07: Western Australian Geological Survey, 1:250 000 Ternary Radiometric Image.



SHEET INDEX		
YALGOO SH 50-2	KIRKALOCKA SH 50-3	YULAMBA SH 50-4
PERENLORI SH 50-6	NINGHAN SH 50-7	BAPLEE SH 50-8
MORRA SH 50-10	BENCUBBIN SH 50-11	JACKSON SH 50-12



The image is compiled from the three surveys that are listed below, the areas covered by each are shown on the survey index.
The grid cell size is 80 m.

Survey ID	Survey name	Flight line spacing	Flight line direction	Ground clearance	Crystal volume	Contractor	Date	Client
1	Cue/Kirkalocka	400 m	90° – 270°	60 m	33.6 litres	UTS	2004	GSWA/GA
2	Burakin	400 m	0° – 180°	60 m	33.6 litres	UTS	2004	GSWA/GA
3	Mt Marshall	250 m	0° – 180°	60 m	33.6 litres	Kevron	1996	Stockdale Prospecting



Department of
Industry and Resources

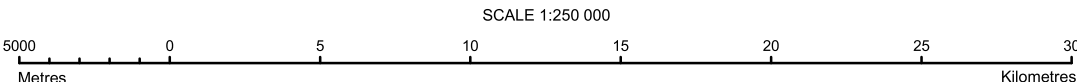
Geological Survey of
Western Australia



Australian Government
Geoscience Australia

NGA

PRODUCT OF THE NATIONAL
GEOSCIENCE AGREEMENT



UNIVERSAL TRANSVERSE MERCATOR PROJECTION
HORIZONTAL DATUM: GEODETIC DATUM OF AUSTRALIA
Grid lines indicate 20 000 metre interval of the Map Grid Australia Zone 50



The Map Grid Australia (MGA) is based on the Geocentric Datum of Australia 1994 (GDA94).
GDA94 positions are compatible within one metre of the datum MGA94 positions.

GEOLOGICAL SURVEY OF WESTERN AUSTRALIA

TERNARY RADIOMETRIC IMAGE
Potassium, Thorium, Uranium as red, green, blue

NINGHAN

SHEET SH 50-7

First Edition 2005

© Western Australia 2005

WARNING: Inks are water soluble and will
fade with prolonged exposure to light