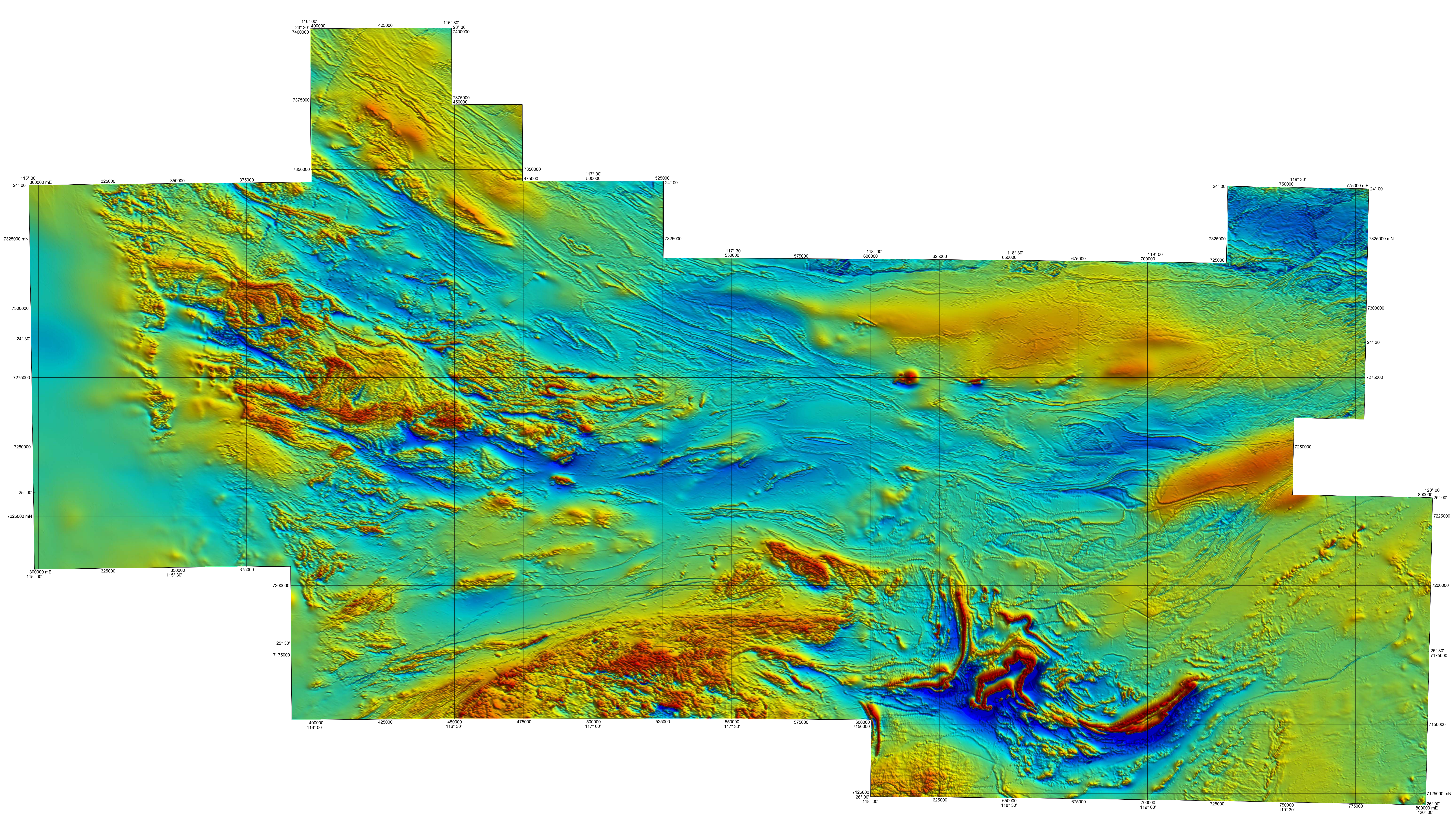


1:500 000 TOTAL MAGNETIC INTENSITY IMAGE

BANGEMALL - GASCOYNE REGION
GEOLOGICAL SURVEY OF WESTERN AUSTRALIA

SHEETS SG 50-2, SG 50-8 and PART SHEETS SF 50-14, SG 50-1, SG 50-3, SG 50-4, SG 50-5, SG 50-6, SG 50-7



This magnetic intensity image was created from the four survey datasets listed below. The area covered by each survey is shown on the survey index. The grid cell size is 125m and the survey grids were merged using Intrepid Grid Stitch Software.

Survey ID	Survey Name	Sub ID	Line Spacing (m)	Line Direction	Terrain Clearance (m)	Date	Operator
1	Bangemall		500	0 - 180 degrees	80	1995	WGC
2	Merfingale		500	87 - 247 degrees	80	1995	TAG
3	Peak Hill	Area B	400	0 - 180 degrees	80	1995	TAG
4	Peak Hill	Area C	400	45 - 225 degrees	80	1995	TAG

Compiled by J. H. Watt

Project geophysicist D. Howard

Edited by G. Loan and N. Tetlaw

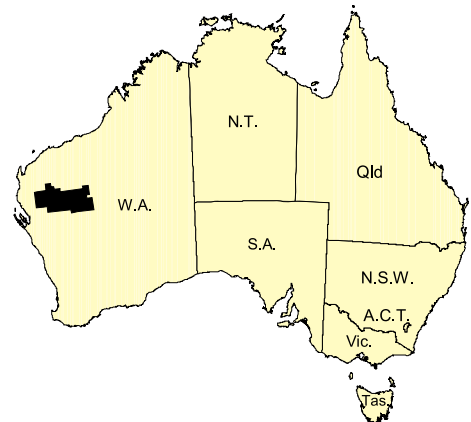
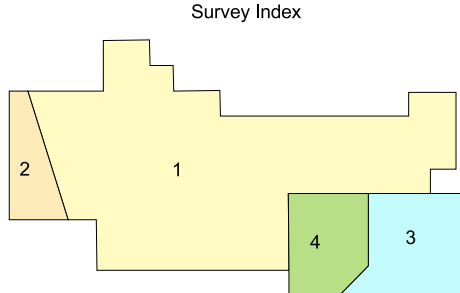
Cartography by J. Kirk

Pixel colours used in this image have been enhanced using histogram equalisation and are optimized for the data range in this area. Pixel colours are not necessarily the same as that used for images of adjacent or overlapping areas in this series.

Published by the Geological Survey of Western Australia. Copies are available from the Information Centre, Department of Minerals and Energy, 100 Plain Street, East Perth, WA 6004. Phone (08) 9222 3459. Fax (08) 9222 3444.

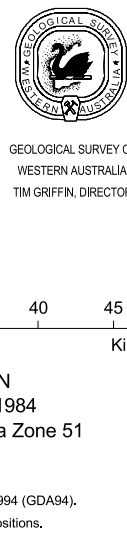
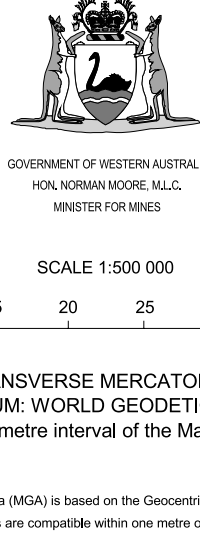
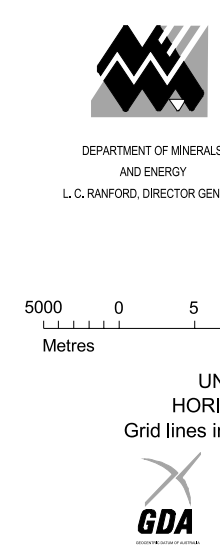
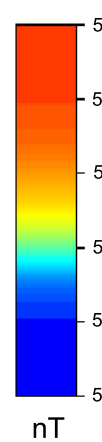
Digital data available from Department of Minerals and Energy, 100 Plain Street, East Perth, WA 6004

The recommended reference for this map is:
GEOLOGICAL SURVEY OF WESTERN AUSTRALIA, 2000, BANGEMALL - GASCOYNE REGION, W.A.
Sheets SG 50-2, SG 50-8 and part sheets SF 50-14, SG 50-1, SG 50-3, SG 50-4, SG 50-5, SG 50-6, SG 50-7.
Western Australia Geological Survey, 1:500 000 Total Magnetic Intensity Image



SHEET INDEX							
NINGALOO SF 50-1	YANREY SF 50-4	WYLOO SF 50-10	MOUNT BRUCE SF 50-11	ROY HILL SF 50-12	BALFOUR DOWNS SF 51-8		
MIMILYA SF 49-18	WINNING POOL SF 50-13	EDALDO SF 50-14	TURKE CREEK SF 50-15	NEWMAN SF 50-16	ROBERTSON SF 51-13		
QUOSSA SG 49-4	KENNELLY RANGE SG 50-2	MOUNT PHILLIPS SG 50-2	MURRAY SG 50-3	GOLLIER SG 50-4	BULLEN SG 51-1		
SHARK BAY SG 49-8	WOORAMEL SG 50-5	GLENBURNIE SG 50-6	ROBERTSON RANGE SG 50-7	PEAK HILL SG 50-8	NABBERU SG 51-5		
EDIEL SG 49-12	YARRAGA SG 50-9	BYRD SG 50-10	BEULIE SG 50-11	GLENGARRY SG 50-12	WILUNA SG 51-9		

WARNING: This is water soluble and will fade with prolonged exposure to light



SCALE 1:500 000

UNIVERSAL TRANSVERSE MERCATOR PROJECTION
HORIZONTAL DATUM: WORLD GEODETIC SPHEROID 1984
Grid lines indicate 25 000 metre interval of the Map Grid Australia Zone 51

The Map Grid Australia (MGA) is based on the Geocentric Datum of Australia 1994 (GDA94).
GDA94 positions are compatible within one metre of the legacy WGS84 positions.

GEOLOGICAL SURVEY OF WESTERN AUSTRALIA

TOTAL MAGNETIC INTENSITY
BANGEMALL - GASCOYNE REGION

First Edition 2000
© Western Australia 2000