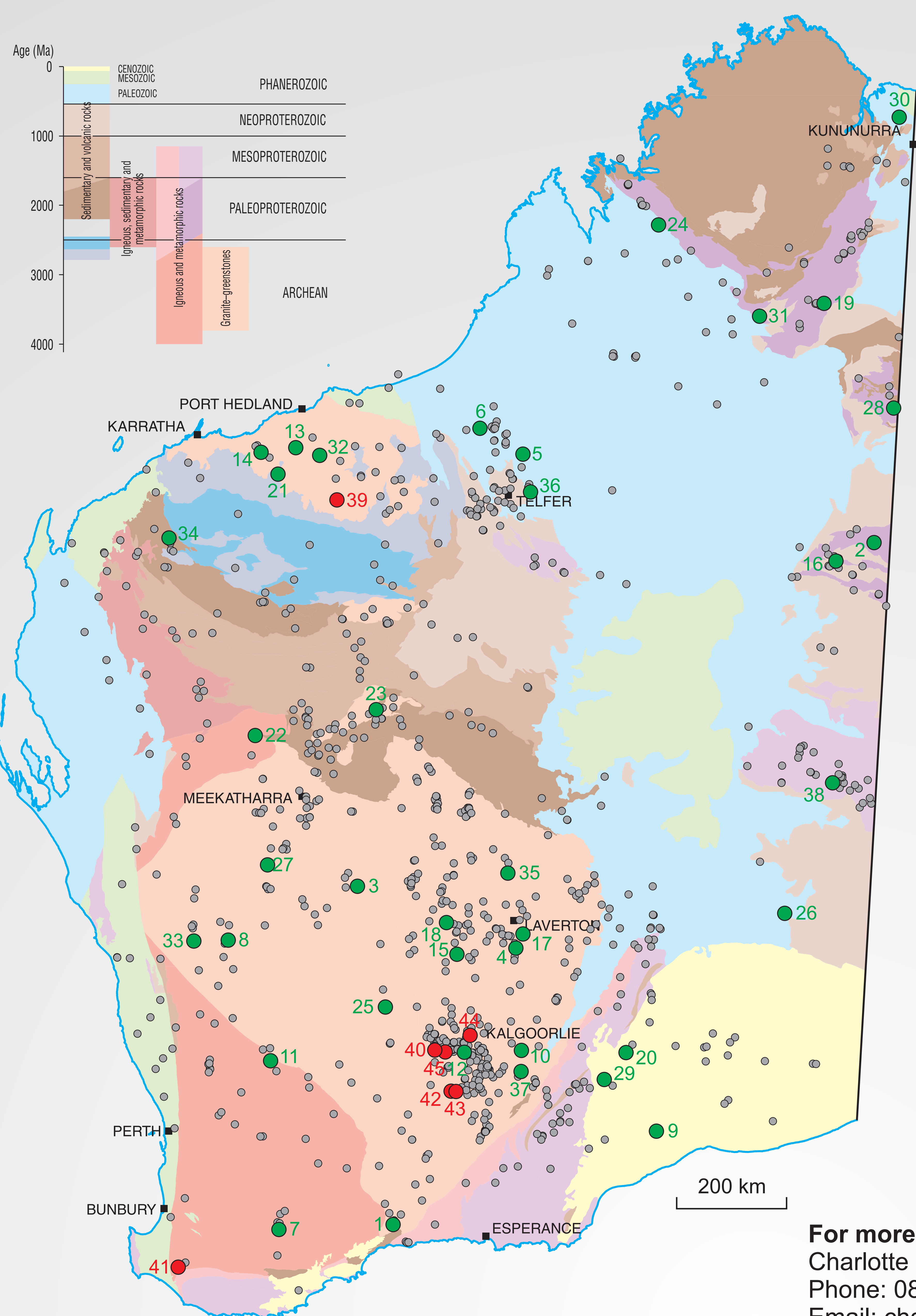


# EXPLORATION INCENTIVE SCHEME

The Exploration Incentive Scheme (EIS) is a State Government initiative that aims to encourage exploration in Western Australia for the long-term sustainability of the State's resources sector.

## SUCCESSFUL EIS CO-FUNDED APPLICANTS

### LOCATION OF CO-FUNDED EXPLORATION DRILLING PROGRAMS



### SUCCESSFUL APPLICANTS ROUND 19 (2019–20)

#### GENERAL

- 1 ACH Minerals Pty Ltd
- 2 Agrimin Limited
- 3 Alto Metals Limited
- 4 AngloGold Ashanti
- 5 Antipa Minerals Limited
- 6 Antipa Minerals Limited
- 7 Ausgold Exploration Pty
- 8 BACOME PTY LTD
- 9 BHP Billiton Nickel West Pty Ltd
- 10 Breaker Resources NL
- 11 Cygnus Gold Ltd
- 12 David Reed
- 13 De Grey Mining Ltd
- 14 De Grey Mining Ltd
- 15 Genesis Minerals Limited
- 16 Geocrystal Limited
- 17 Great Southern Mining Limited
- 18 Greenstone Resources (WA) Pty Ltd
- 19 Halls Creek Mining Pty Ltd
- 20 Independence Group NL (IGO)
- 21 Kairos Minerals Limited
- 22 Kingston Resources Ltd
- 23 Lodestar Minerals
- 24 Macallum Group Limited
- 25 Macarthur Minerals
- 26 Maria Resources Pty Ltd
- 27 Musgrave Minerals Ltd
- 28 Northern Star Resources Ltd.
- 29 NSZ Resources Pty Ltd
- 30 Onshore Energy Pty Ltd
- 31 Peak Limited
- 32 Pilbara Minerals Limited
- 33 Pure Rich Resources Pty Ltd
- 34 Red Hill Iron Limited
- 35 Regis Resources Ltd
- 36 Rio Tinto Exploration
- 37 Silver Lake Resources
- 38 Traka Resources Limited

#### PROSPECTOR

- 39 Baracus Pty Ltd
- 40 Boulder Investments Group Pty Ltd
- 41 Brightspark Graphite Pty Ltd
- 42 Linnie Harris
- 43 Linnie Harris
- 44 Vera Olive Allen
- 45 Zinfandel Exploration Pty Ltd

● General

● Prospector

● Round 1–18 (2009–10 to 2019)

For more information, contact:  
Charlotte Hall – Coordinator, EIS  
Phone: 08 9222 3410  
Email: [charlotte.hall@dmirs.wa.gov.au](mailto:charlotte.hall@dmirs.wa.gov.au)

**EXPLORATION  
INCENTIVE  
SCHEME**

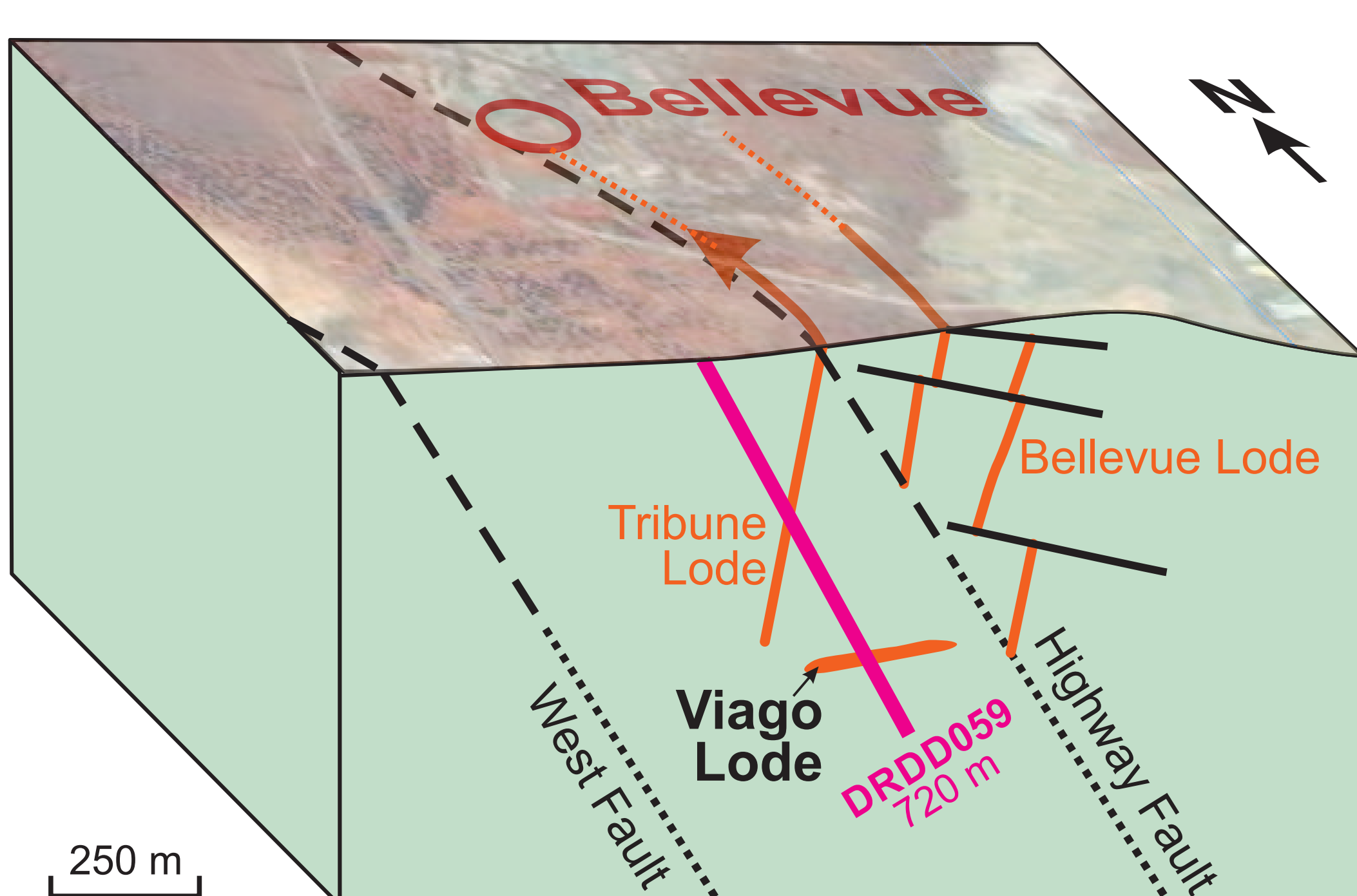
## DEEP HOLES *from* PREVIOUS SUCCESSFUL EIS APPLICANTS

### BELLEVUE GOLD Ltd (formerly Draig Resources Ltd) Bellevue Gold project

Round 15, 2017–18, EIS co-funded drilling  
DRDD059, 720 m

EIS co-funded drilling to test for mineralization  
offset by the Highway Fault:

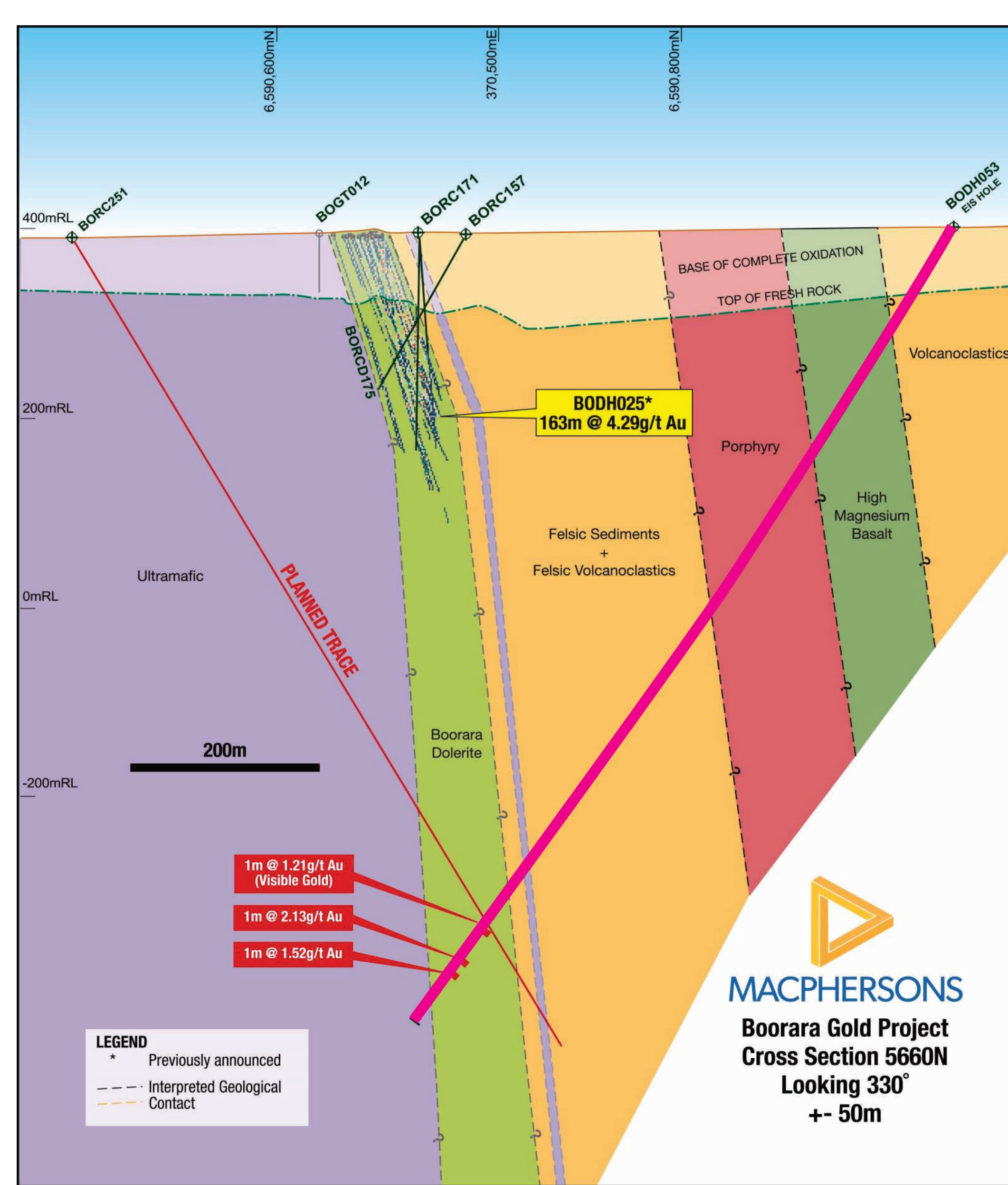
- Drilled to locate Tribune Lode which was intersected
- **Discovered** Viago Lode at 575 m
- As of 27 October 2018, maiden inferred resource estimate of Viago Lode to be 0.8 Mt @ 22 g/t gold for 550 000 ounces
- Viago discovery doubled Bellevue Gold project inferred resource in four months to more than one million ounces



### MacPHERSONS RESOURCES Ltd Boorara project

Round 15, 2017–18, EIS co-funded drilling,  
BODH053, 1023 m

- Intersected mineralization **310 m** below previous deepest known gold mineralization
- Dolerite host to mineralization, has greater width at depth
- A much larger mineralized system than previously conceived



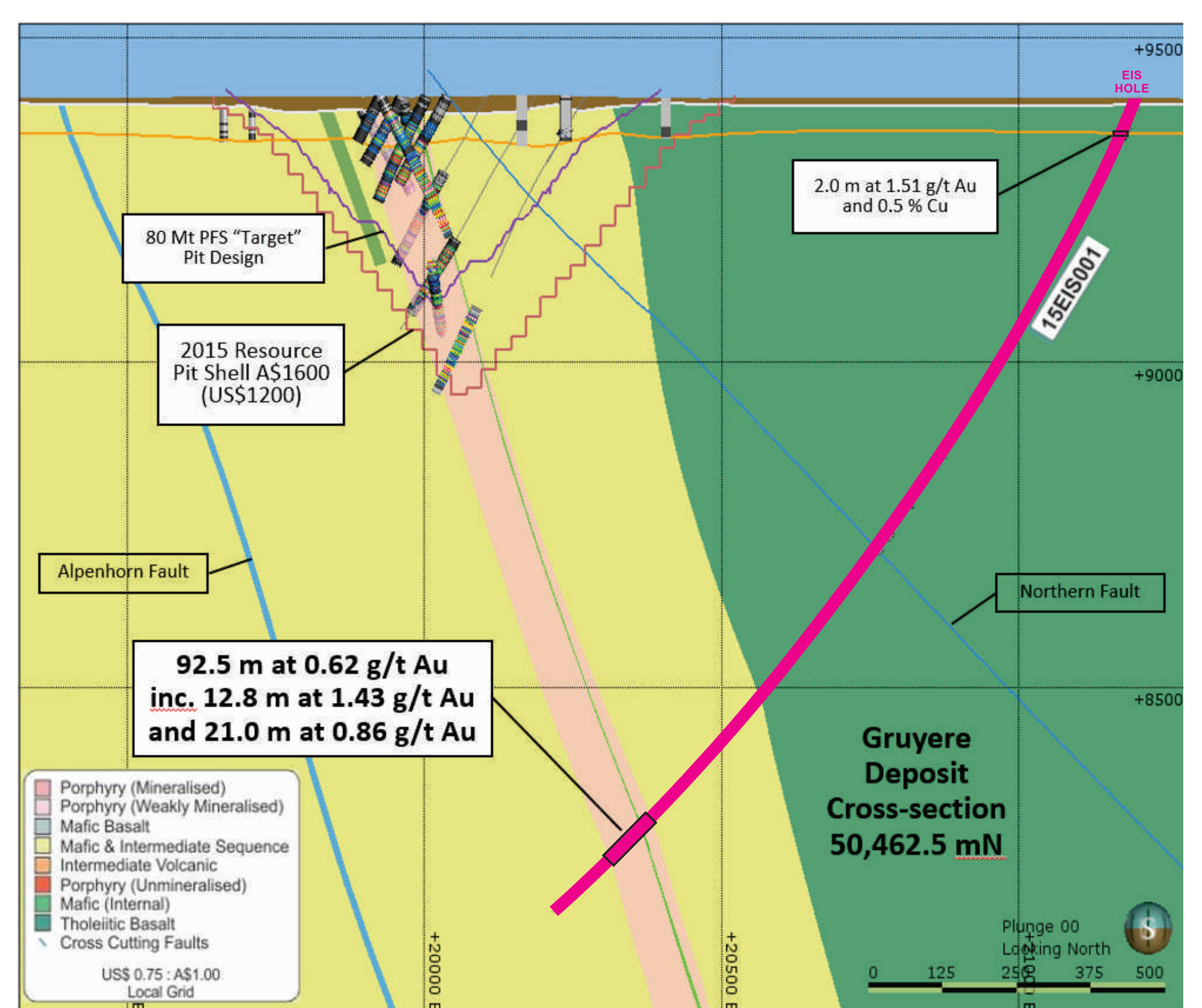
### GOLD ROAD RESOURCES Ltd Gruyere project

Round 10, 2015, EIS co-funded drilling,  
15EIS001, 1702 m

Intersected mineralization **680 m** below resource and 1100 m below the surface

- Scale of mineralization significantly enhanced
- Confidence in refined models developed for exploration and resource calculations provided by factual data from drillcore

'This EIS drillhole has given us a kick-start to understanding the scale of the deposit, and will allow further definition to be undertaken in a strategic and cost-effective manner in the long term' —Justin Osbourne, Executive Director, ASX release Sept 2015.

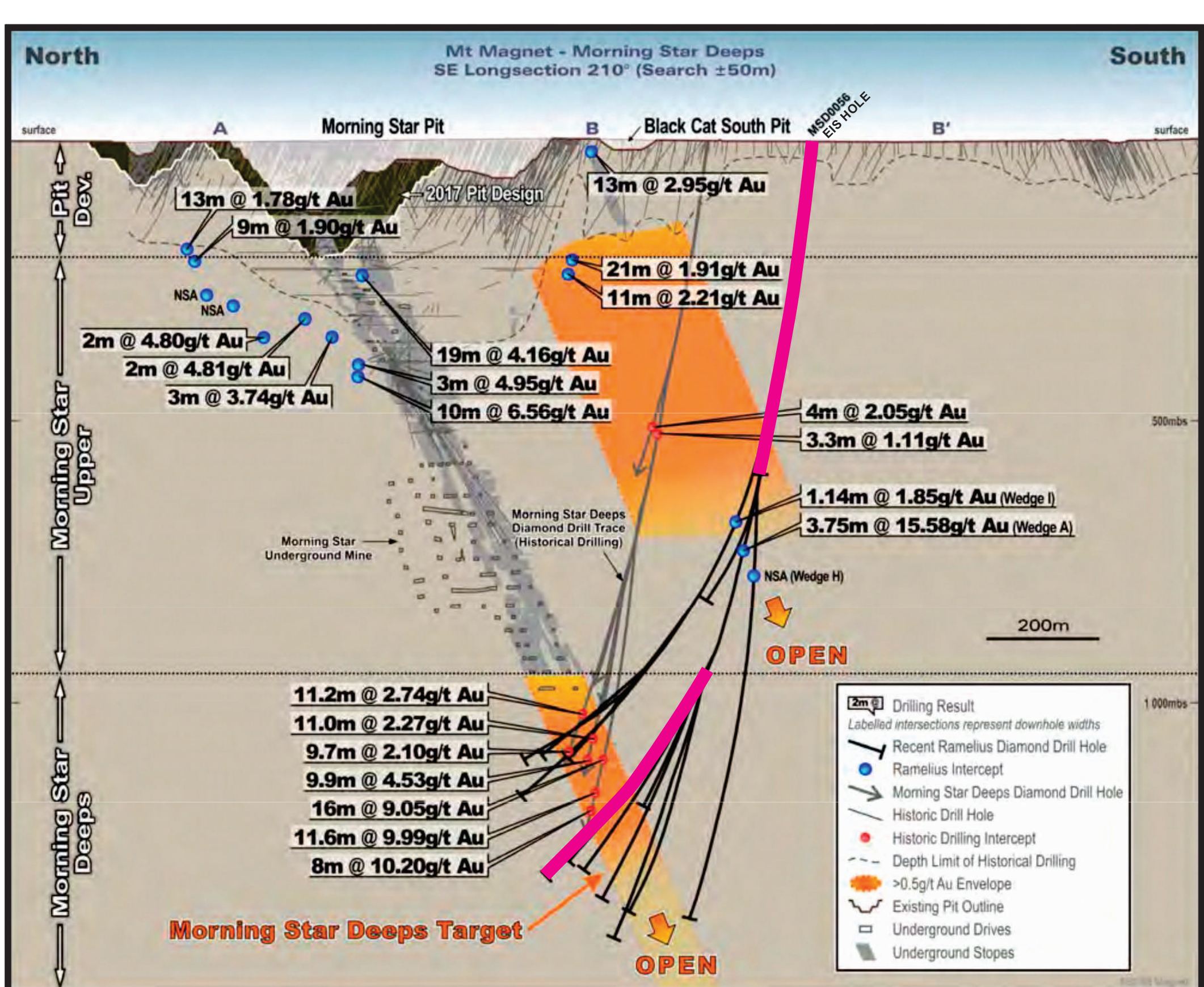


### MOUNT MAGNET GOLD Pty Ltd Morning Star Deeps diamond drilling project

Round 14, 2017, EIS co-funded drilling,  
MSD0056/56A, 1425 m

Parent hole (MSD0056) has provided avenue for deeper exploratory diamond drilling by wedging to:

- Identify highly encouraging mineralization intersections beneath current underground operations
- Provide encouraging drill intersection, e.g. Hole MSD0056A - 3.75 m at 15.58 g/t Au from a depth of 714 m
- Mineralization is still open to depth



EIS drillhole trace  
(as highlighted in  
examples above)



[www.dmp.wa.gov.au/eisdriiling](http://www.dmp.wa.gov.au/eisdriiling)



Government of Western Australia  
Department of Mines, Industry Regulation and Safety

[www.dmirs.wa.gov.au](http://www.dmirs.wa.gov.au)

Geological Survey of  
Western Australia



MAY 2019