

COMPANY PROJECTS WITH SURFACE  
GEOCHEMISTRY DATA IN OPEN FILE  
REPORTS (at October 1997)  
PROJECTS REPORTED BETWEEN 1967 AND 1995

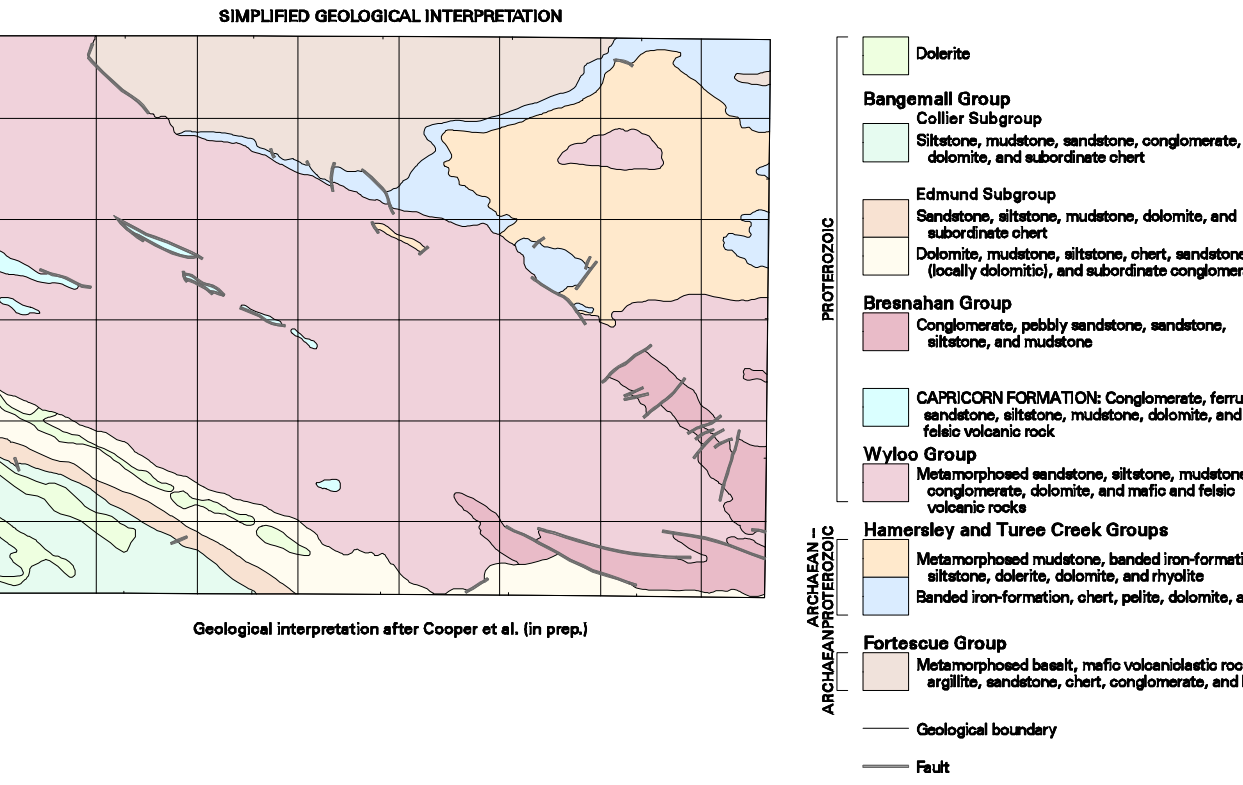
**SYMBOLS**

- Formed road
- Track
- Railway
- Watercourse
- Lake
- Homestead
- Locality
- Major opencut
- Open-cut (gold, unless otherwise indicated)
- Alluvial working (gold, unless otherwise indicated)
- Prospect
- Mineral occurrence
- Copper
- Asbestos, crocidolite
- Gemstones
- Gold
- Iron
- Lead
- Silver
- Uranium

**Period Project Reported Within**  
(Various colour shades used for ease of project identification)

- 1967 - 1970
- 1971 - 1975
- 1976 - 1980
- 1981 - 1985
- 1986 - 1990
- 1991 - 1995

Number within project area is a database ID number (See Appendix 2)



**SHEET INDEX**

WYLOO SF 50-10	MOUNT BRUCE SF 50-11	ROY HILL SF 50-12
EDMUND SF 50-14	TUREE CREEK SF 50-15	NEWMAN SF 50-16
MOUNT PHILLIPS SG 50-2	MOUNT ESBERTON SG 50-3	COLLIER SG 50-4



**INDEX TO 1:100 000 MAP SHEETS  
WITHIN TUREE CREEK 1:250 000**

ABRURTON 2561	PARABURDOO 2461	SNOWY MOUNT 2561
KENNETH RANGE 2560	BOBBLEA 2460	KALLERNA 2560

COMPANY PROJECTS WITH SURFACE  
GEOCHEMISTRY DATA IN OPEN FILE  
REPORTS (at October 1997)  
PROJECTS REPORTED BETWEEN 1967 AND 1995

REGOLITH GEOCHEMISTRY SERIES  
**TUREE CREEK**  
SHEET SF 50-15  
FIRST EDITION 1998  
© Western Australia 1998

WARNING: Inks are water soluble and will fade with prolonged exposure to light