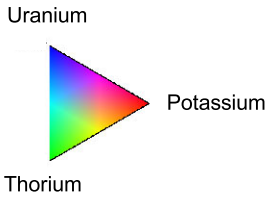
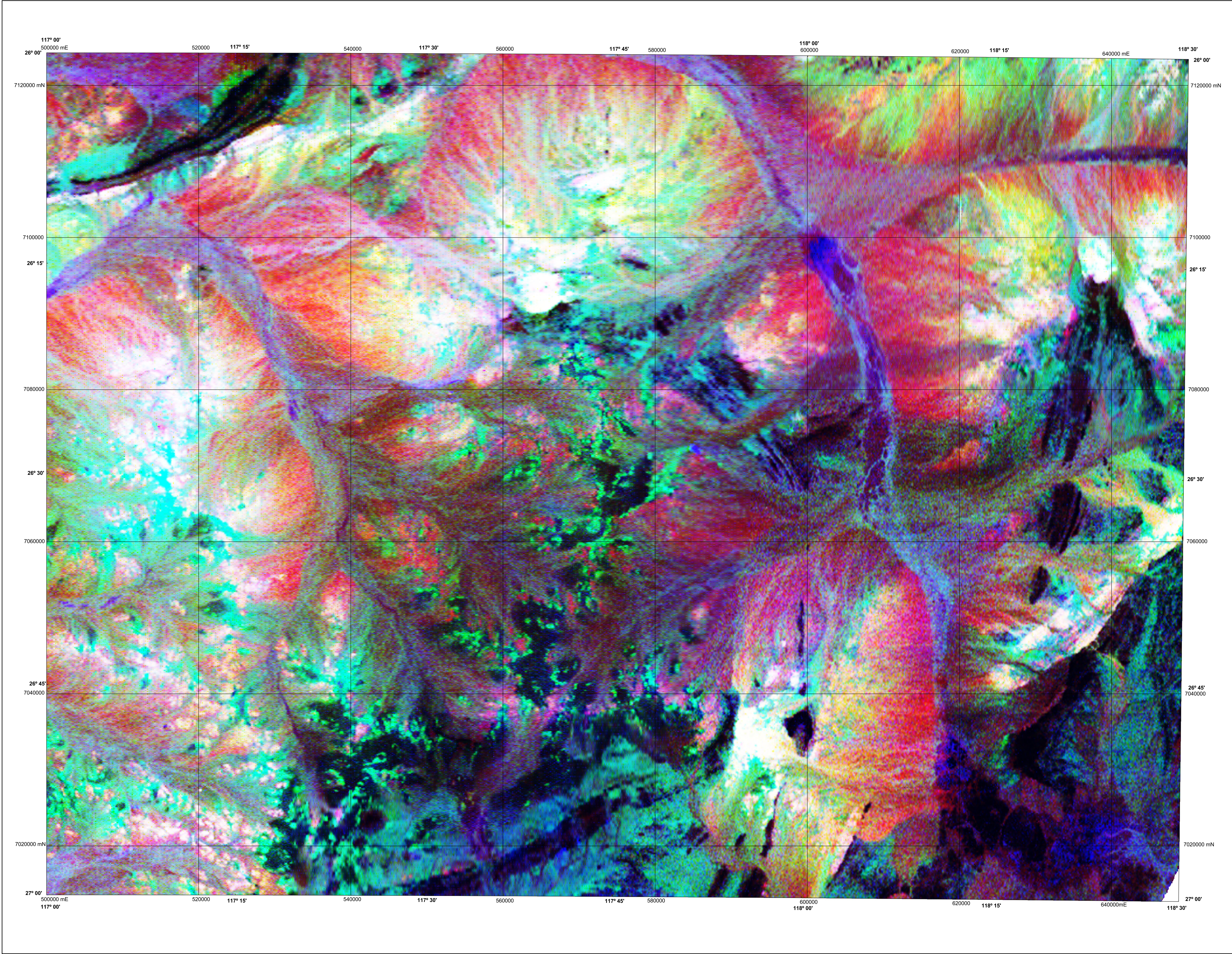


BELELE

GEOLOGICAL SURVEY OF WESTERN AUSTRALIA

SHEET SG 50-11

1:250 000 TERNARY RADIOMETRIC IMAGE



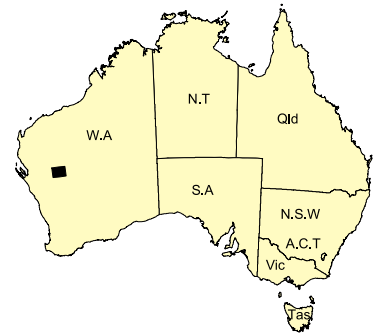
Data acquired in 2003 were merged by Geoscience Australia with private company data, flown between 1995 and 1996, and multi-client data, flown between 1985 and 1988, purchased from Fugro Airborne Surveys Ltd. These data now form part of the National Airborne Geophysical Database.

Published by the Geological Survey of Western Australia. Copies are available from the Information Centre, Department of Industry and Resources, 100 Plain Street, East Perth, WA 6004. Telephone (08) 9222 3459, Fax (08) 9222 3444, www.doir.wa.gov.au

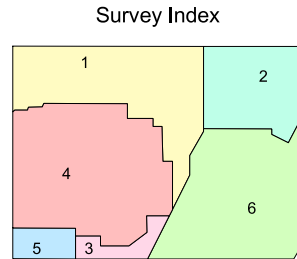
Secondary data processing B. Bell
Image processing J. H. Watt
Cartography J. Simonetti
Geophysical Project Manager S. H. D. Howard

These data are available in digital form from the Sales Centre, Geoscience Australia, GPO Box 378, Canberra, ACT 2601. Telephone (02) 6249 9966, Fax (02) 6249 9982. Digital data are also available for download from Geoscience Australia, www.ga.gov.au/databases

The recommended reference for this map is:
GEOLOGICAL SURVEY OF WESTERN AUSTRALIA, 2004, Belele, W.A. Sheet SG 50-11:
Western Australian Geological Survey, 1:250 000 Ternary Radiometric Image.



SHEET INDEX		
GLENELPH SG 50-06	ROBINSON RANGE SG 50-07	PEAK HILL SG 50-08
BIRIO SG 50-10	BELELE SG 50-11	GLENHARRY SG 50-12
MURDOOD SG 50-14	CUE SG 50-15	SANDSTONE SG 50-16

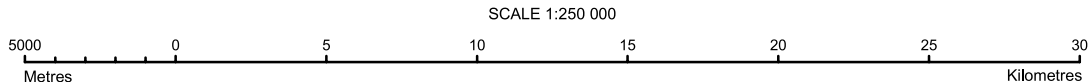


The image is compiled from the six surveys that are listed below, the areas covered by each are shown on the survey index.

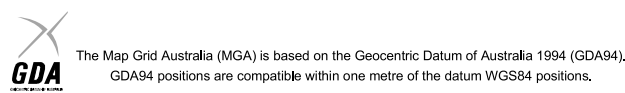
Survey ID	Survey name	Flight line spacing	Flight line direction	Ground clearance	Crystal volume	Contractor	Date	Client
1	Belele Northwest	400 m	0° – 180°	60 m	33.6 litres	Fugro	2003	GSWA/GA
2	Belele Northeast	400 m	90° – 270°	60 m	33.6 litres	Fugro	2003	GSWA/GA
3	Belele Southwest	400 m	90° – 270°	60 m	33.6 litres	Fugro	2003	GSWA/GA
4	Kali	250 m	0° – 180°	60 m	33.6 litres	Kevron	1996	Stockdale Prospecting Ltd
5	Kylie Hill	250 m	90° – 270°	60 m	33.6 litres	Kevron	1996	Stockdale Prospecting Ltd
6	Murchison	200 m	90° – 270°	60 m	33.6 litres	Aerodata	1985 – 1988	Multi-client data



NGA
PRODUCT OF THE NATIONAL
GEOSCIENCE AGREEMENT



UNIVERSAL TRANSVERSE MERCATOR PROJECTION
HORIZONTAL DATUM: GEODETIC DATUM OF AUSTRALIA
Grid lines indicate 20 000 metre interval of the Map Grid Australia Zone 50



GEOLOGICAL SURVEY OF WESTERN AUSTRALIA
TERNARY RADIOMETRIC IMAGE
Potassium, Thorium, Uranium as red, green, blue

BELELE

SHEET SG 50-11

First Edition 2004
© Western Australia 2004

WARNING: Inks are water soluble and will fade with prolonged exposure to light