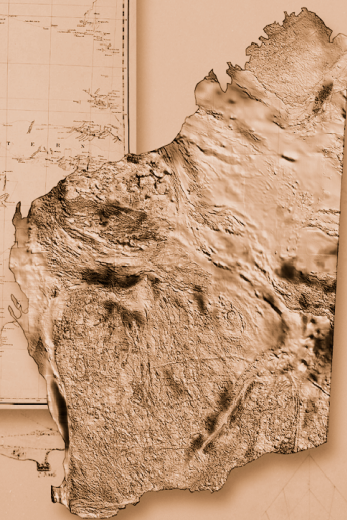
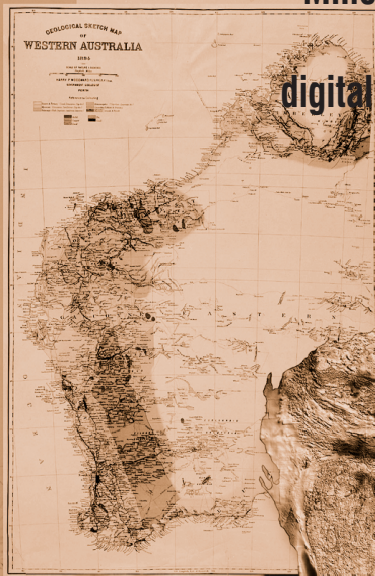




Department of Mineral and
Petroleum Resources

Mines and mineral deposits of Western Australia: digital extract from MINEDEX July 2001



Geological Survey of Western Australia



Mines and mineral deposits of Western Australia: digital extract from MINEDEX, July 2001

For information on this database see GSWA Record 2000/13
(supplied on this CD as an Adobe Acrobat PDF file).

Data supplied in Microsoft Access 97 and CSV (comma-separated
values) formats.

- Locations of mines, mineral deposits, processing plants,
mineral-handling facilities, and selected exploration sites
- Current mineral resources and cutoff criteria
- Historical (pre-1985) gold production
- Tenements
- Corporate owners of mining or potential mining projects

The information on this disk
remains the property of the
Western Australian Department
of Mineral and Petroleum Resources
and is covered by Crown copyright.
Copying or on-selling of these
data without prior written
permission of the Department of
Mineral and Petroleum Resources
will be seen as a breach of copyright.

July 2001

Geological Survey of Western Australia

100 Plain Street East Perth 6004 Western Australia
Phone: +61 8 9222 3168 Facsimile: +61 8 9222 3633
Home page: <http://www.dme.wa.gov.au>

Mines and mineral deposits of Western Australia: digital extract from MINEDEX, July 2001

Product available from First Floor counter, Mineral House, 100 Plain St, East Perth, WA 6004, AUSTRALIA. Or ordered through: www.dmp.wa.gov.au/ebookshop

Enquiries to Email: gsd.dda@dmp.wa.gov.au; Phone: +61 8 9222 3459; Fax: +61 8 9222 3444.

Cost: \$55 [inc. GST]