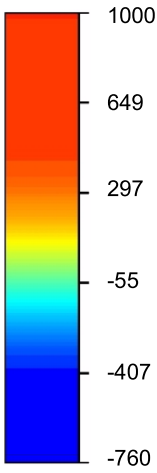
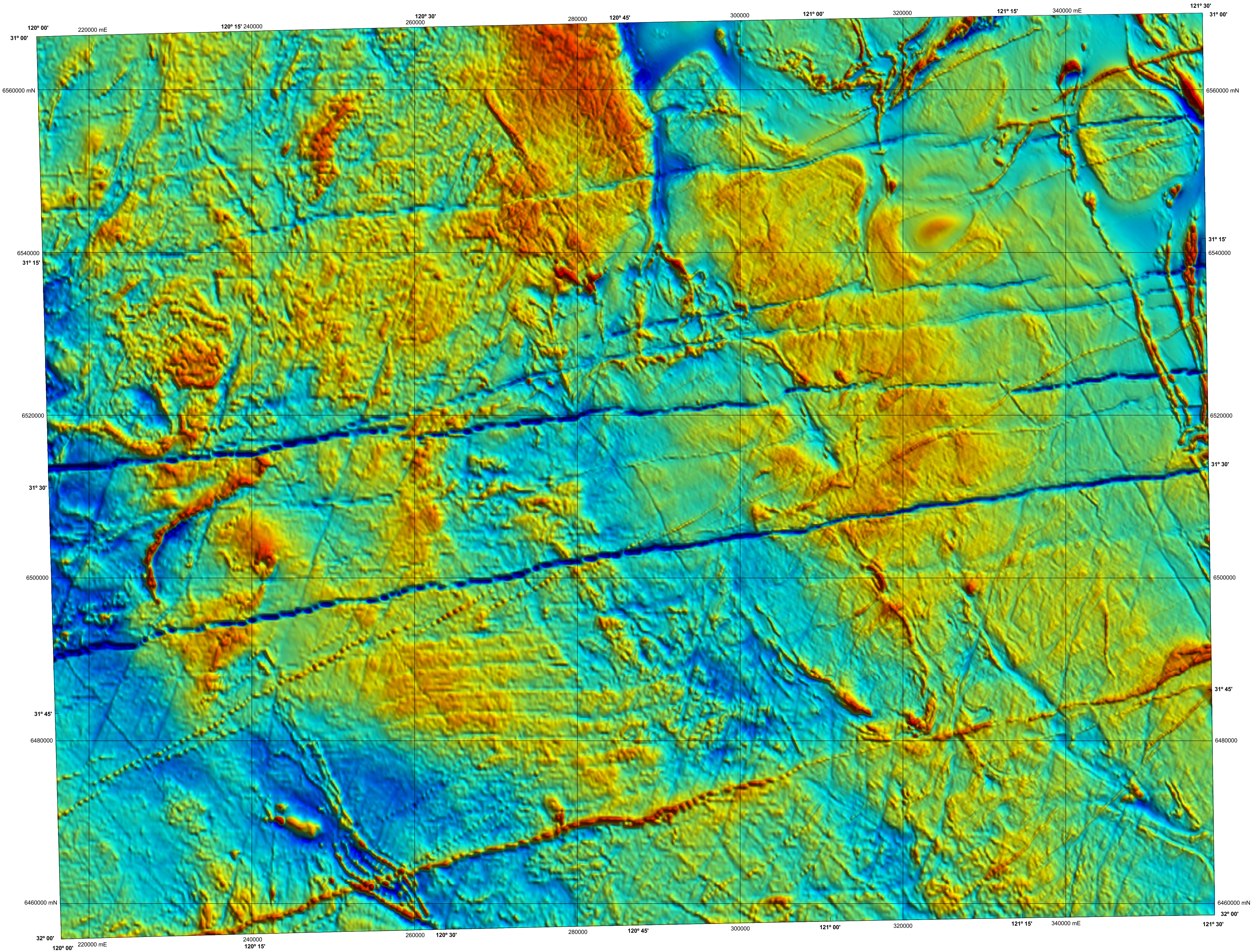


BOORABBIN

GEOLOGICAL SURVEY OF WESTERN AUSTRALIA

1:250 000 TOTAL MAGNETIC INTENSITY IMAGE

SHEET SH 51-13



Data acquired in 2005 were merged by Geoscience Australia with multi-client data, flown between 1985 and 1995. These data now form part of the National Airborne Geophysical Database.

Published by the Geological Survey of Western Australia. Copies are available from the Information Centre, Department of Industry and Resources, 100 Plain Street, East Perth, WA 6004. Telephone (08) 9222 3459, Fax (08) 9222 3444, www.doir.wa.gov.au

Secondary data processing R. Franklin
Image processing J. H. Watt
Cartography S. Jefferys
Geophysical Project Manager S. H. D. Howard

These data are available in digital form from the Sales Centre, Geoscience Australia, GPO Box 378, Canberra, ACT 2601. Telephone (02) 6249 9966, Fax (02) 6249 9982. Digital data are also available for download from Geoscience Australia, www.ga.gov.au/gadds

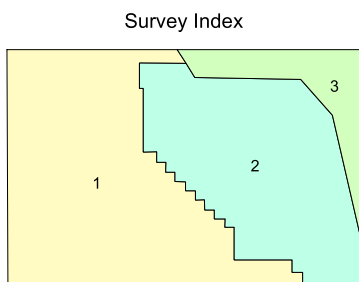
The recommended reference for this map is:
GEOLOGICAL SURVEY OF WESTERN AUSTRALIA, 2005. Boorabbin, W.A. Sheet SH 51-13. Western Australia Geological Survey, 1:250 000 Total Magnetic Intensity Image.

nT
Residual values with the
international geomagnetic
reference field removed



SHEET INDEX

JACKSON SH 51-12	KALGOORLIE SH 51-9	KURRALUR SH 51-10
SOUTHERN CROSS SH 51-15	BOORABBIN SH 51-13	WEDGEMOULTA SH 51-14
HYDEN SH 51-4	LAKE JOHNSTON SH 51-1	NORSEMAN SH 51-2



The image is compiled from the three surveys that are listed below, and the areas covered by each are shown on the survey index. The grid cell size is 80 m.

Survey ID	Survey name	Flight line spacing	Flight line direction	Ground clearance	Contractor	Date	Client
1	Boorabbin – Lake Johnston	400 m	90° – 270°	60 m	Fugro	2005	GSW/GA
2	Yilgarn – Boorabbin	200 m	90° – 270°	60 m	World Geoscience	1995	Multi-client data
3	Yilgarn – Boorabbin	200 m	90° – 270°	60 m	World Geoscience	1985	Multi-client data

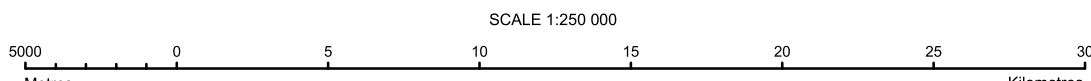


Department of
Industry and Resources

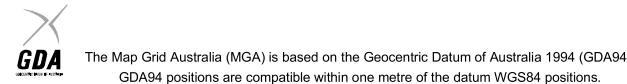


NGA

PRODUCT OF THE NATIONAL
GEOSCIENCE AGREEMENT



UNIVERSAL TRANSVERSE MERCATOR PROJECTION
HORIZONTAL DATUM: GEODETIC DATUM OF AUSTRALIA
Grid lines indicate 20 000 metre interval of the Map Grid Australia Zone 51



GEOLOGICAL SURVEY OF WESTERN AUSTRALIA

TOTAL MAGNETIC INTENSITY IMAGE

BOORABBIN

SHEET SH 51-13

First Edition 2005

Version 1.0 - June 2005

© Western Australia 2005

WARNING: Inks are water soluble and will
fade with prolonged exposure to light