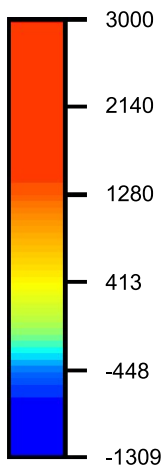
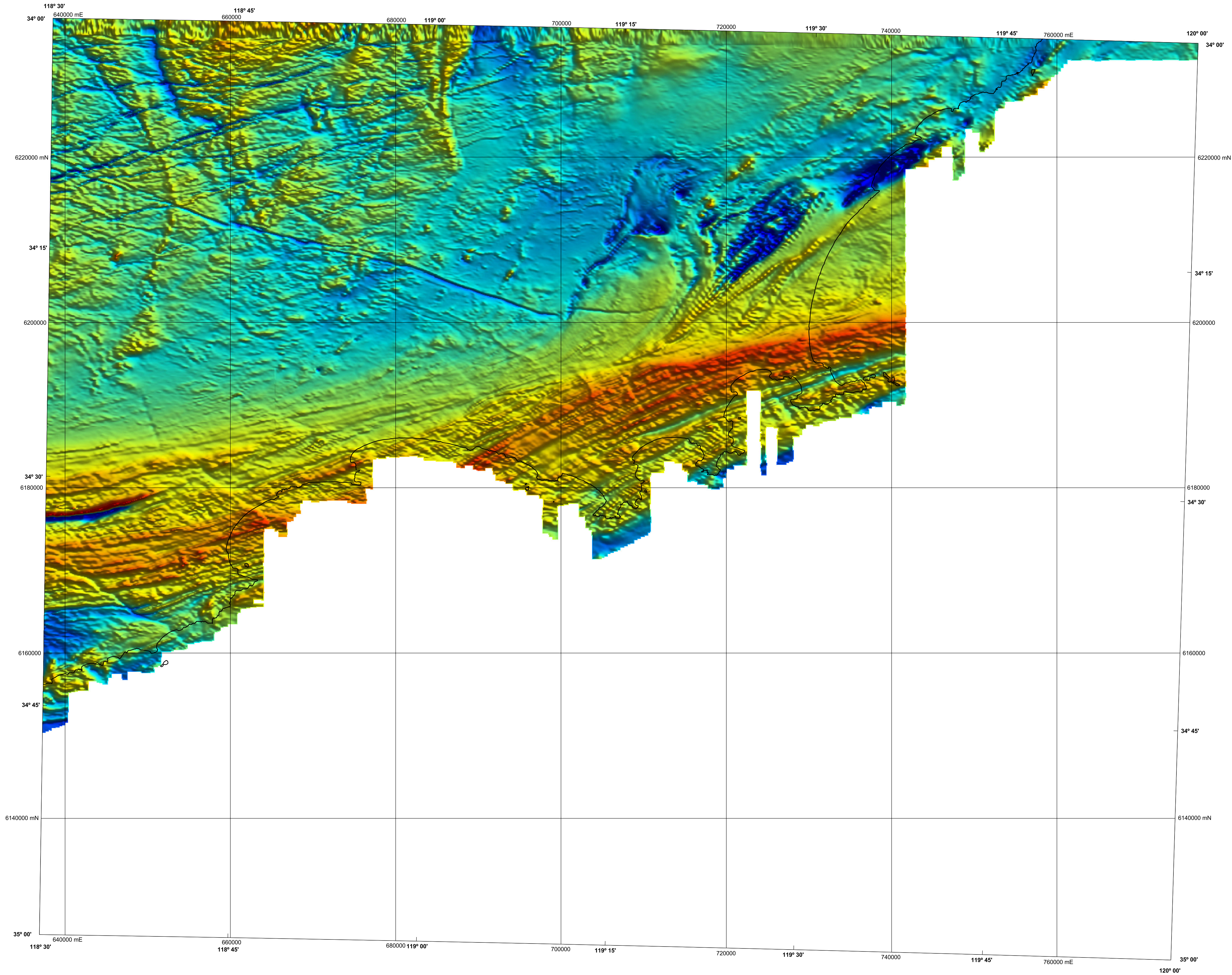


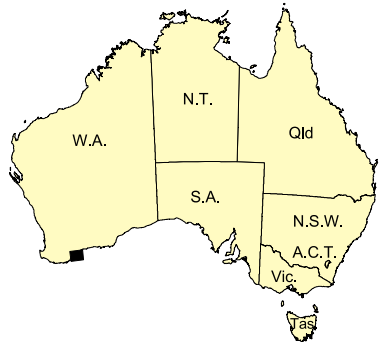
1:250 000 TOTAL MAGNETIC INTENSITY IMAGE

BREMER BAY
GEOLOGICAL SURVEY OF WESTERN AUSTRALIA

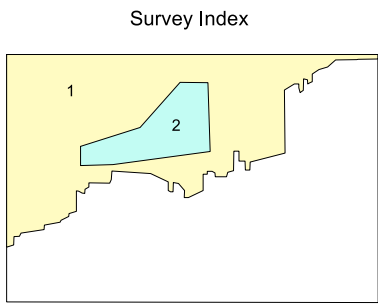
SHEET SI 50-12



Residual values with the
International Geomagnetic
Reference Field removed



SHEET INDEX		
DUMBLEYUNG SI 50-1	NEWGATE SI 50-4	RAVENSTHORPE SI 50-5
MOUNT BARKER SI 50-11	BREMER BAY SI 50-12	INVESTIGATOR ISLAND SI 50-6
ALBANY SI 50-15	ABERTY SI 50-16	

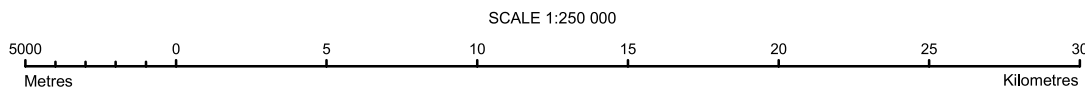


The image is compiled from the two surveys that are listed below, the areas covered by each are shown on the survey index.
The grid cell size is 80 m.

Survey ID	Survey name	Flight line spacing	Flight line direction	Ground clearance	Contractor	Date	Client
1	P1067 Bremer bay	400 m	90° – 270°	60 m	UTS	2005	GSWA/GA
2	Devil's Creek	300 m	0° – 180°	70 m	World Geoscience	1999	BHP Minerals Ltd



NGA
PRODUCT OF THE NATIONAL
GEOSCIENCE AGREEMENT



UNIVERSAL TRANSVERSE MERCATOR PROJECTION
HORIZONTAL DATUM: GEODETTIC DATUM OF AUSTRALIA
Grid lines indicate 20 000 metre interval of the Map Grid Australia Zone 50

GDA
The Map Grid Australia (MGA) is based on the Geocentric Datum of Australia 1994 (GDA94).
GDA94 positions are compatible within one metre of the datum WGS84 positions.

GEOLOGICAL SURVEY OF WESTERN AUSTRALIA
TOTAL MAGNETIC INTENSITY IMAGE

BREMER BAY
SHEET SI 50-12

First Edition 2005

Version 1.0 - September 2005

© Western Australia 2005

WARNING: Inks are water soluble and will
fade with prolonged exposure to light