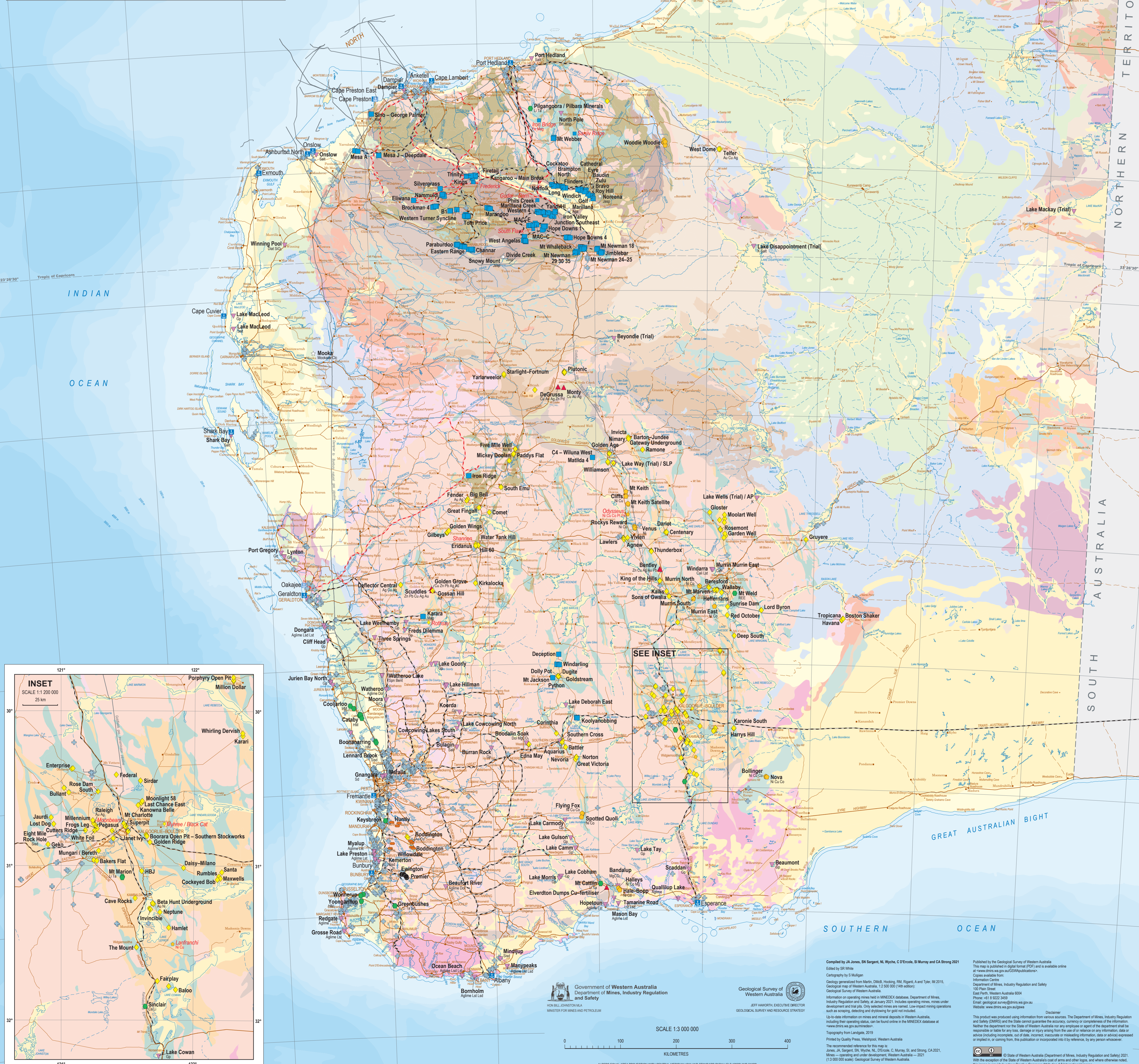
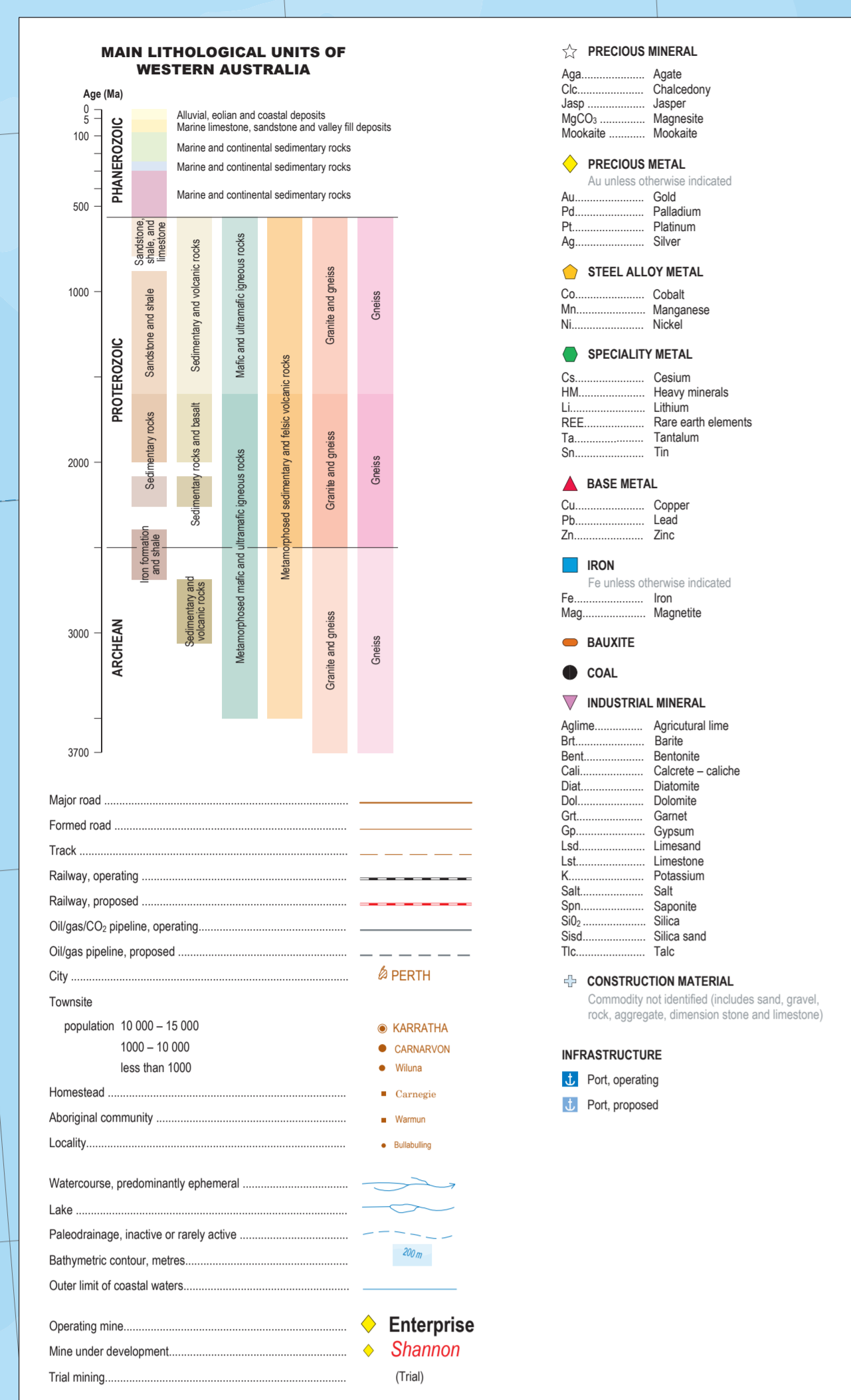


MINES — OPERATING AND UNDER DEVELOPMENT

Western Australia — 2021



Compiled by JA Jones, SN Sargent, NL Wycha, C D'Ercolo, SI Murray and CA Strong 2021
Edited by SR White

Published by the Geological Survey of Western Australia
This map is published in digital format (PDF) and is available online
at www.gswa.gov.au as (GSAW) publications.

Copies available from:
Information Centre
Department of Mines, Industry Regulation and Safety
400 Pitt Street, Sydney, NSW 2000

100 Plain Street
East Perth, Western Australia 6004
Phone: +61 8 9222 3459
Email: geological_survey@dmirs.wa.gov.au

Website: www.dmr.wa.gov.au/gwa

Disclaimer

This product was produced using information from various sources. The Department of Mines, Industry Regulation and Safety (DMIRS) and the State cannot guarantee the accuracy, currency or completeness of the information.

Neither the department nor the State of Western Australia nor any employee or agent of the department shall be responsible or liable for any loss, damage or injury arising from the use of or reliance on any information, data or advice (including incomplete, out of date, incorrect, inaccurate or misleading information, data or advice) expressed or implied, the user accepting full and absolute responsibility for its use. No liability shall be accepted by the department or the State of Western Australia for any loss, damage or injury arising from the use of or reliance on any information, data or advice (including incomplete, out of date, incorrect, inaccurate or misleading information, data or advice) expressed or implied, the user accepting full and absolute responsibility for its use.

© State of Western Australia (Department of Mines, Industry Regulation and Safety) 2021

With the exception of the State of Western Australia's coat of arms and other logos, and where otherwise noted, this image is provided under a Creative Commons Attribution 4.0 International License.
<http://creativecommons.org/licenses/by/4.0/legalcode>