

COMPANY PROJECTS WITH SURFACE
GEOCHEMISTRY DATA IN OPEN FILE
REPORTS (at December 1995)
PROJECTS REPORTED BETWEEN 1968 AND 1985

SYMBOLS

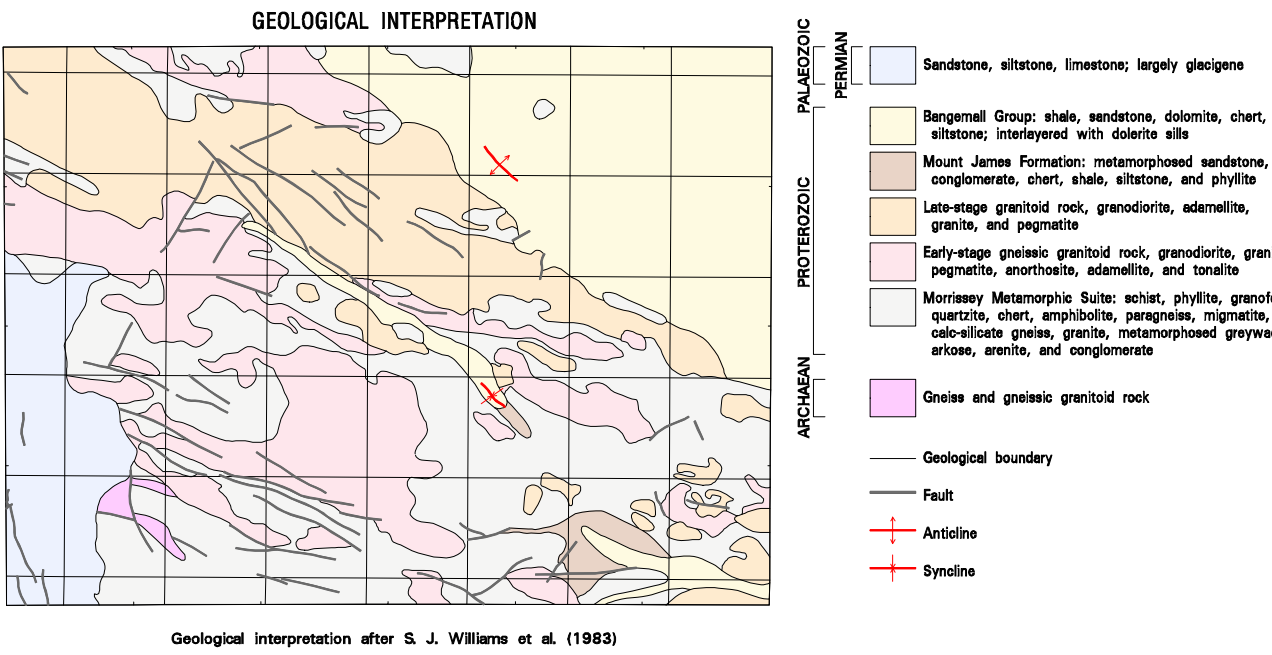
Period Project Reported Within
(Various colour shades used for ease of project identification)

1968 - 1970	1971 - 1975	1976 - 1980	1981 - 1985	1986 - 1990	1991 - 1995
-------------	-------------	-------------	-------------	-------------	-------------

Number within project area is a database ID number (See Appendix 3)

See PLATE 4

Minor road
Track
Watercourse, ephemeral
Mt Phillips
Mt Genoa
BANGEMALL
Mine, not being worked
Opencut
Opencut, not being worked
Prospect
Mineral occurrence
Barite, Beryl
Bismuth minerals
Copper, Dravite, Fluorite
Gold, Gemstones
Lead, Lithium
Mica, Molybdenum
Rare Earth Elements
Scheelite
Tantalite-columbite, Tin
Uranium, Zinc



SHEET INDEX

WINNING POOL SG 50-13	EDMUND SG 50-14	TURKEE CREEK SG 50-15
KENNEDY RANGE SG 50-1	MOUNT PHILLIPS SG 50-2	MOUNT EGBERTON SG 50-3
WOORAMEL SG 50-5	GLENBURGH SG 50-6	ROBINSON RANGE SG 50-7

**INDEX TO 1:100 000 MAP SHEETS
WITHIN MT PHILLIPS 1:250 000**

EUDAMULLAH 2049	MOUNT PHILLIPS 2148	MOUNT AUBUSTUS 2249
LOCKER 2048	YINNETHARRA 2148	PINK HILLS 2248



COMPANY PROJECTS WITH SURFACE
GEOCHEMISTRY DATA IN OPEN FILE
REPORTS (at December 1995)
PROJECTS REPORTED BETWEEN 1968 AND 1985

REGOLITH GEOCHEMISTRY SERIES

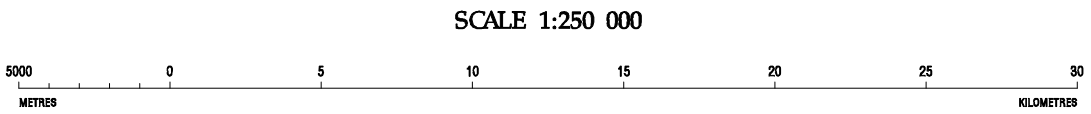
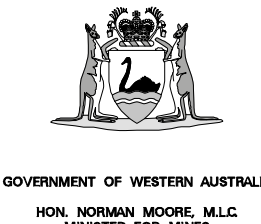
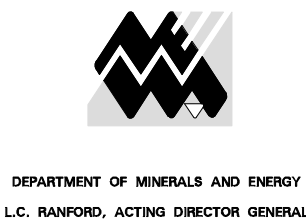
MOUNT PHILLIPS

SHEET SG 50-2

FIRST EDITION 1987

© Western Australia 1997

Edited by D. Ferdinando and G. Loan
Cartography by G. Jose and D. Ladbroke
Topography from Australian Surveying and Land Information Group sheet SG 50-2 and modified from geological field survey (1985)
This map was compiled from open file mineral exploration reports held by the Geological Survey of Western Australia and produced digitally using a Geographic Information System, Arc/info
This map is also available in digital form
Published by the Geological Survey of Western Australia. Copies of this map, or extracts from the database, are available from the Mining Information Centre, Department of Minerals and Energy, 100 Plain Street, East Perth, 6004. Phone (08) 9222 3459, Fax (08) 9222 3444

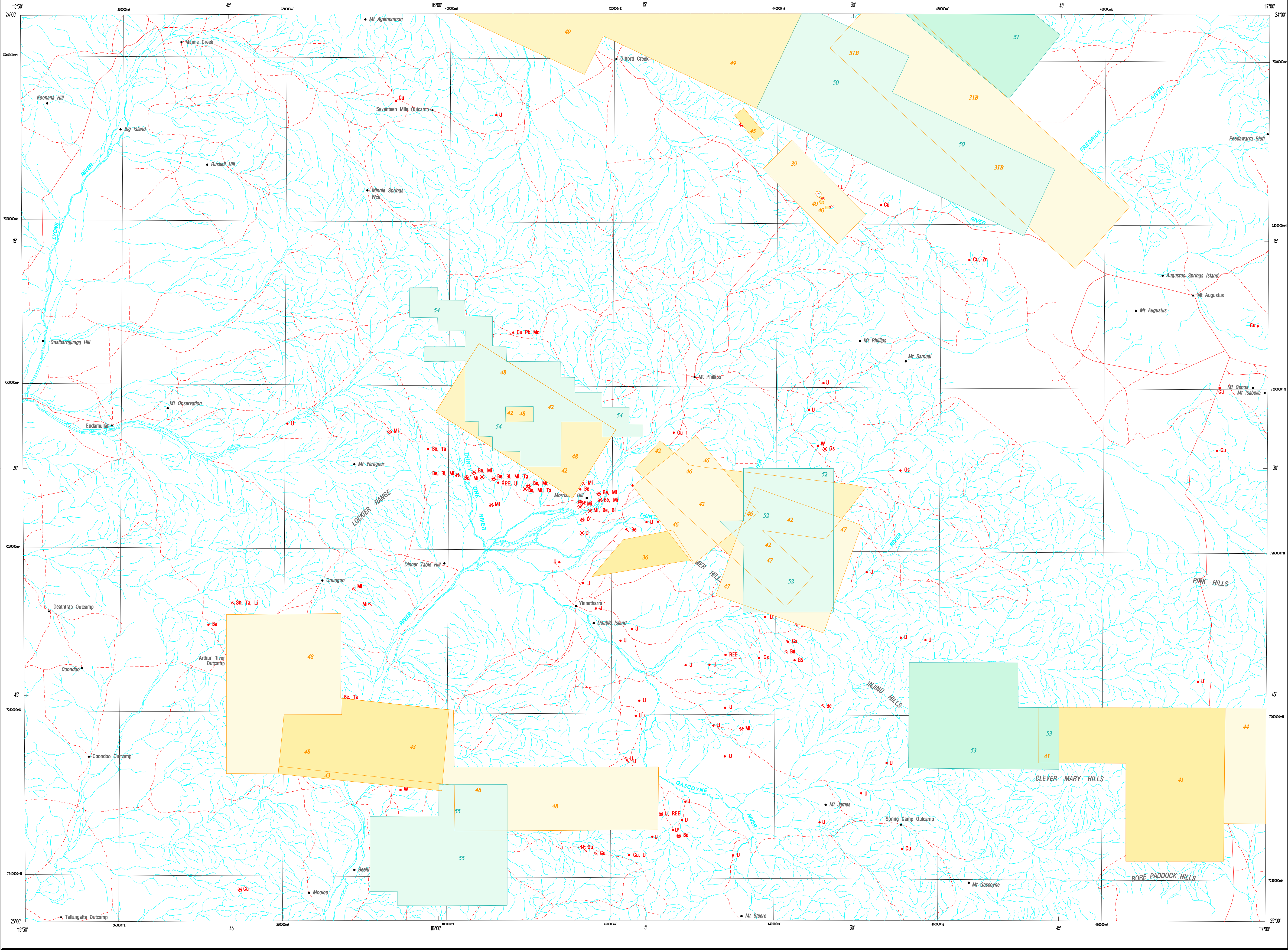


TRANSVERSE MERCATOR PROJECTION
Grid lines indicate 20 000 metre interval of the Australian Map Grid Zone 50

Compiled by: J.A. Faulkner 1986
Compiled from open file mineral exploration reports held by the Geological Survey of Western Australia
Tenement boundaries have been generalized for the purpose of this map to an accuracy of + or - 500 metres. Refer to specific project reports for precise boundary descriptions
The recommended reference for this map is: FAULKNER, J.A., 1997, Mount Phillips, W.A. sheet SG 50-2 -- Company projects with surface geochemistry data in open file reports (at August 1995), projects reported between: 1968 and 1985: Western Australia Geological Survey, 1:250 000 Regolith Geochemistry Series, Plate 3

WARNING: Inks are water soluble and will fade with prolonged exposure to light

MOUNT PHILLIPS
GEOLOGICAL SURVEY OF WESTERN AUSTRALIA



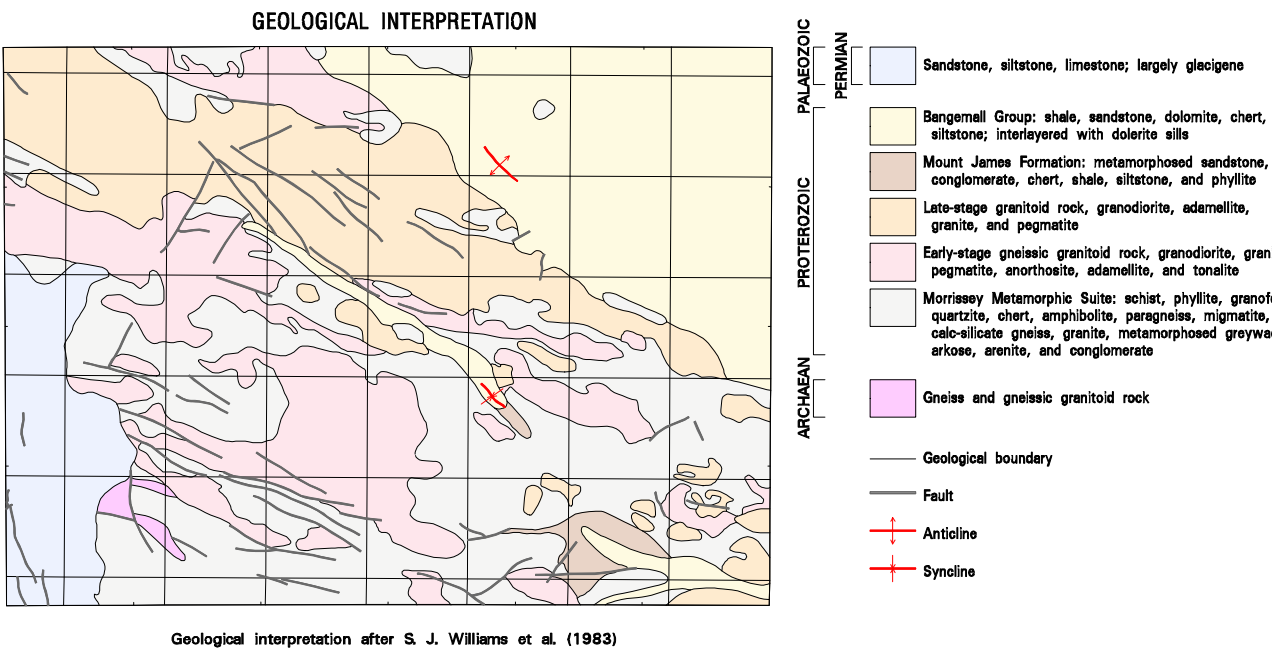
COMPANY PROJECTS WITH SURFACE
GEOCHEMISTRY DATA IN OPEN FILE
REPORTS (at December 1995)
PROJECTS REPORTED BETWEEN 1986 AND 1994

SYMBOLS

Period Project Reported Within
(Various colour shades used for ease of project identification)

1968 - 1970	See PLATE 3	Minor road
1971 - 1975		Track
1976 - 1980		Watercourse, ephemeral
1981 - 1985		Mt Phillips Homestead
1986 - 1990		Mt Genoa Locality
1991 - 1995		BANGEMALL Mining centre
		Mine, not being worked
		Opencut
		Opencut, not being worked
		Prospect
		Mineral occurrence
		Barite, Beryl
		Bismuth minerals
		Copper, Dravite, Fluorite
		Gold, Gemstones
		Lead, Lithium
		Mica, Molybdenum
		Rare Earth Elements
		Scheelite
		Tantalite-columbite, Tin
		Uranium, Zinc

Number within project area is a database ID number (See Appendix 3)

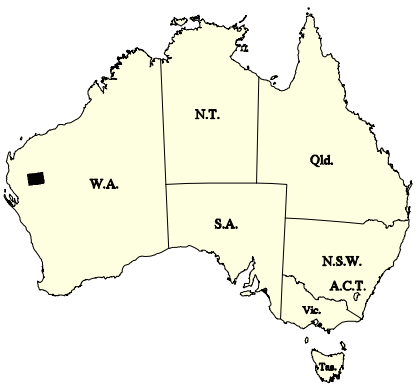


SHEET INDEX

WINNING POOL SF 50-13	EDMUND SF 50-14	TURKEE CREEK SF 50-15
KENNEDY RANGE SG 50-1	MOUNT PHILLIPS SG 50-2	MOUNT EGBERTON SG 50-3
WODRAMEL SG 50-5	GLENBURGH SG 50-6	ROBINSON RANGE SG 50-7

INDEX TO 1:100 000 MAP SHEETS
WITHIN MT PHILLIPS 1:250 000

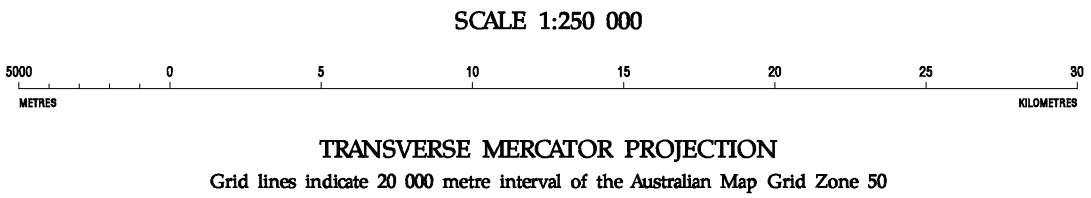
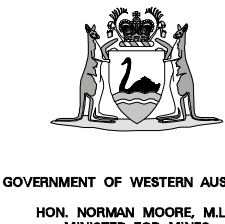
EUDAMULLAH 2049	MOUNT PHILLIPS 2149	MOUNT AUGUSTUS 2249
LOCKIER 2048	YINNETHARRA 2148	PINK HILLS 2248



COMPANY PROJECTS WITH SURFACE
GEOCHEMISTRY DATA IN OPEN FILE
REPORTS (at December 1995)
PROJECTS REPORTED BETWEEN 1986 AND 1994

REGOLITH GEOCHEMISTRY SERIES
MOUNT PHILLIPS
SHEET SG 50-2
FIRST EDITION 1997
© Western Australia 1997

Edited by D. Ferdinando and G. Loan
Cartography by G. Jose and D. Ladbroke
Topography from Australian Surveying and Land Information Group sheet SG 50-2 and modified from geological field survey (1995)
This map was compiled from open file mineral exploration reports held by the Geological Survey of Western Australia and produced digitally using a Geographic Information System, Arc/info
This map is also available in digital form
Published by the Geological Survey of Western Australia. Copies of this map, or extracts from the database, are available from the Mining Information Centre, Department of Minerals and Energy, 100 Plain Street, East Perth, 6004. Phone (08) 9222 3459, Fax (08) 9222 3444



Compiled by: J.A. Faulkner 1996
Compiled from open file mineral exploration reports held by the Geological Survey of Western Australia
Tenement boundaries have been generalized for the purpose of this map to an accuracy of + or - 500 metres. Refer to specific project reports for precise boundary descriptions
The recommended reference for this map is: FAULKNER, J.A., 1997, Mount Phillips, W.A. sheet SG 50-2 -- Company projects with surface geochemistry data in open file reports (at August 1995), projects reported between: 1986 and 1994: Western Australia Geological Survey, 1:250 000 Regolith Geochemistry Series, Plate 4

WARNING: Inks are water soluble and will fade with prolonged exposure to light