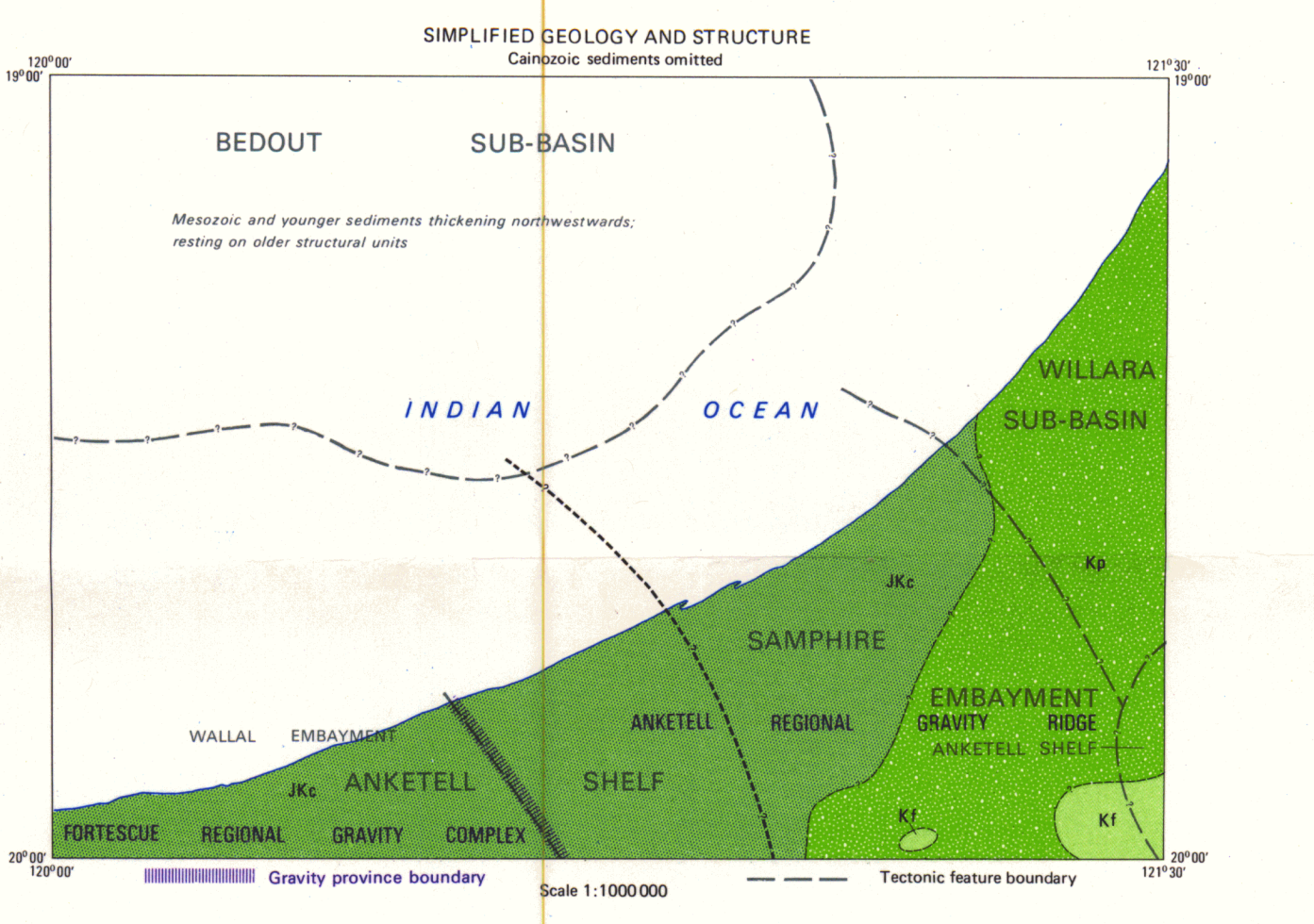
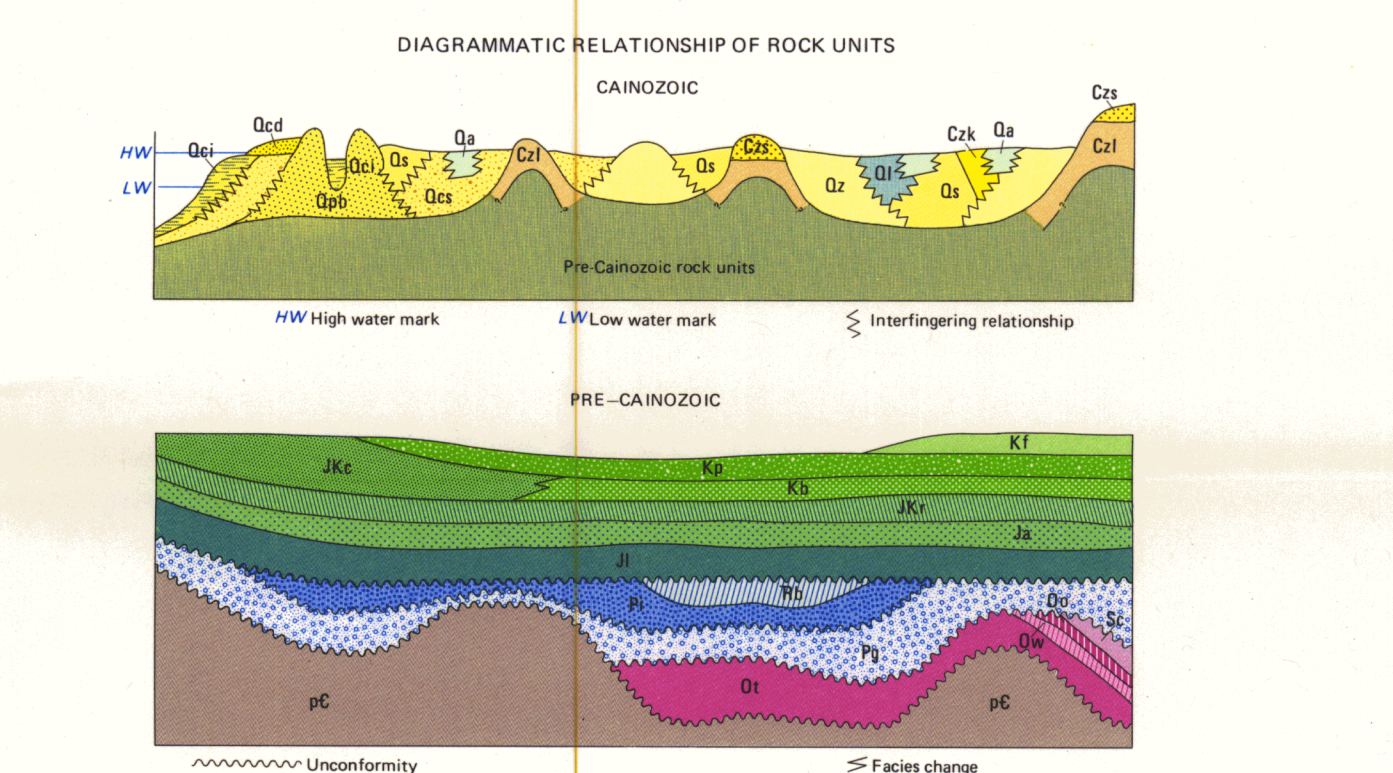
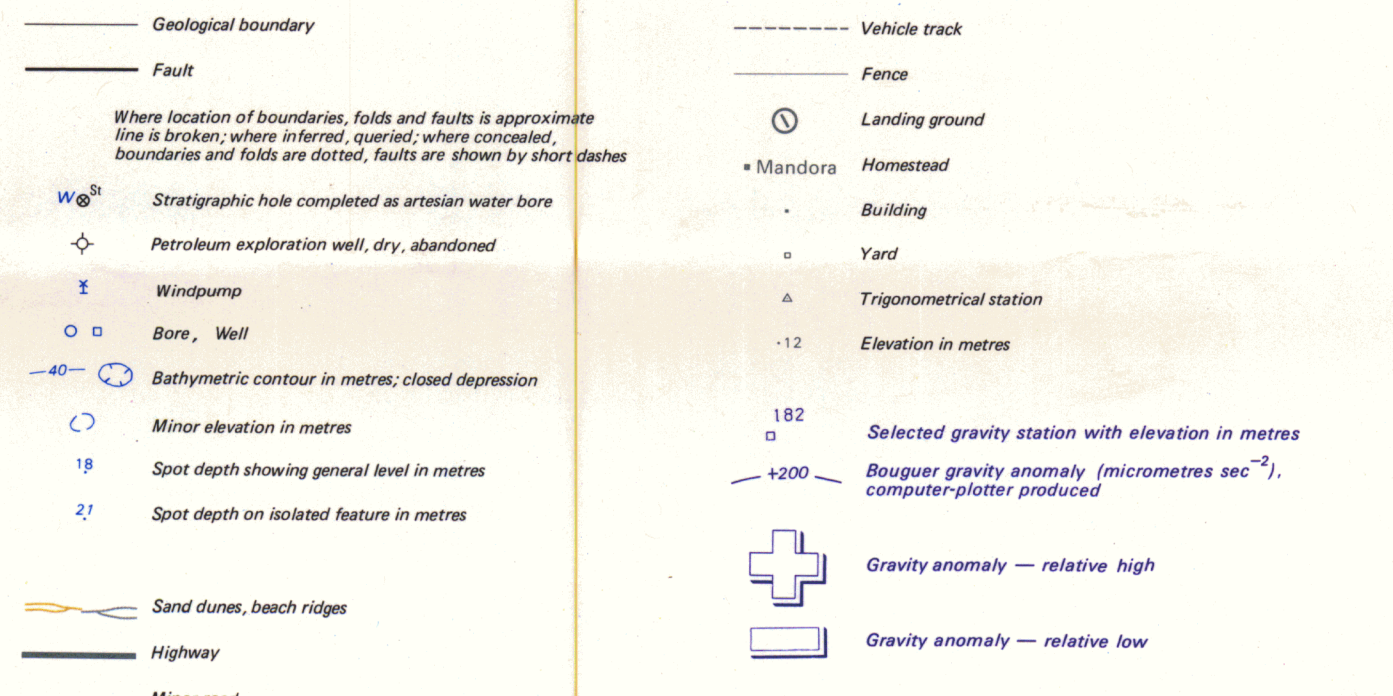


QUATERNARY
EARLY CRETACEOUS
LATE JURASSIC TO EARLY CRETACEOUS
LATE JURASSIC
EARLY TO LATE JURASSIC
TRIASSIC
LATE PERMIAN
EARLY PERMIAN
LATE ORDOVICIAN TO EARLY DEVONIAN
MIDDLE ORDOVICIAN
EARLY ORDOVICIAN
PRECAMBRIAN

Qa	Sand, silt, clay; minor gravel: alluvial
Q1	Clay, silt, sand; minor gypsum: lacustrine
Qs	Sand, silt; minor gravel: mixed alluvial and aeolian
Qz	Red quartz sand, fine to medium; minor silt: aeolian
Qd1	Calcareous sand, partly oolitic: coastal aeolian. Includes reworked Qp
Qd2	Silty clay, black organic clay; minor silt: intertidal and mangrove swamp
Qd3	Quartzite calcarenite, fine to coarse calcilutite, partly oolitic, cross-bedded; fossiliferous: shoreline beach ridges
Qd4	Clay, silt, sand; minor silt: supratidal mud flat deposits
C1a	Calcrete; minor chalcodolite; evaporitic, pedogenic
C1b	Sand, silt, ferruginous psalidite; minor gravel and clay; pedogenic; residual plains overlying C1
C1c	Laterite, pisolitic or massive: pedogenic
K1	Sandstone, fine to coarse, poorly sorted, feldspathic, poorly bedded, some relict cross-bedding; minor conglomerate; fluvial to deltaic, partly pedogenic
Kp	Mudstone, minor fine sandstone lenses, thin-bedded or massive; lagoonal?
Ks	Sandstone, fine to medium, well-sorted, mudstone in part; minor conglomerate; ripple-marked, cross-bedded; minor oolitic; plant fossils; shallow water marine. Section and rock relationship diagram only
Kc	Sandstone, very fine to coarse; pebble conglomerate, cross-bedded; minor siltstone; bioturbated plant fossils: fluvial
JK1	Mudstone, sandy, glauconitic, fossiliferous: marine
JK	Sandstone, fine to medium, interbedded mudstone, bioturbated: marine
J1	Sandstone, minor siltstone, conglomerate, coal; polymorphous: continental to shallow marine
B1	Siltstone, shale, grey, micaceous, carbonaceous, with thin sandstone lenses: shallow water marine
Ch1	Shale, grey to black, sandy, carbonaceous; interbedded sandstone, fine to conglomeratic; polymorphous: paralic
G1	Sandstone, fine to coarse; mudstone; minor conglomerate: glacial marine
D1	Dolomite, dolomitic siltstone, shale, halite, anhydrite; minor sandstone: mainly non-marine
S1	Shale, black, fossiliferous, calcareous, pyritic; interbedded limestone, dolomite; minor siltstone: marine
W1	Limestone, dolomitic, fossiliferous; interbedded shale and siltstone: marine
O1	Shale, grey to green; interbedded limestone and fine to coarse sandstone: marine
P1	Igneous, metamorphic, and sedimentary rocks



Published by the Bureau of Mineral Resources, Geology and Geophysics, Department of National Development and Energy, in conjunction with the Geological Survey of Western Australia, based under the joint authority of the Minister for National Development and Energy, and the Minister for Mines, Western Australia. Base map compiled by the Division of National Mapping from aerial photography at 1:50 000 scale.
© Commonwealth of Australia 1991

UNIVERSAL GRID REFERENCE

GRID ZONE DESIGNATION: 51TUS211

TO OBTAIN A STANDARD REFERENCE TO THE GRID TO NEAREST TWO METRES

SAMPLE POINT: 51TUS211

1. Read values: Northing, 18 000 metres

2. Read values: Easting, 10 000 metres

3. Estimate tenths from grid line to point

4. Estimate tenths from grid line to point

5. Estimate tenths from grid line to point

6. Estimate tenths from grid line to point

7. Estimate tenths from grid line to point

8. Estimate tenths from grid line to point

9. Estimate tenths from grid line to point

10. Estimate tenths from grid line to point

11. Estimate tenths from grid line to point

12. Estimate tenths from grid line to point

13. Estimate tenths from grid line to point

14. Estimate tenths from grid line to point

15. Estimate tenths from grid line to point

16. Estimate tenths from grid line to point

17. Estimate tenths from grid line to point

18. Estimate tenths from grid line to point

19. Estimate tenths from grid line to point

20. Estimate tenths from grid line to point

21. Estimate tenths from grid line to point

22. Estimate tenths from grid line to point

23. Estimate tenths from grid line to point

24. Estimate tenths from grid line to point

25. Estimate tenths from grid line to point

26. Estimate tenths from grid line to point

27. Estimate tenths from grid line to point

28. Estimate tenths from grid line to point

29. Estimate tenths from grid line to point

30. Estimate tenths from grid line to point

31. Estimate tenths from grid line to point

32. Estimate tenths from grid line to point

33. Estimate tenths from grid line to point

34. Estimate tenths from grid line to point

35. Estimate tenths from grid line to point

36. Estimate tenths from grid line to point

37. Estimate tenths from grid line to point

38. Estimate tenths from grid line to point

39. Estimate tenths from grid line to point

40. Estimate tenths from grid line to point

41. Estimate tenths from grid line to point

42. Estimate tenths from grid line to point

43. Estimate tenths from grid line to point

44. Estimate tenths from grid line to point

45. Estimate tenths from grid line to point

46. Estimate tenths from grid line to point

47. Estimate tenths from grid line to point

48. Estimate tenths from grid line to point

49. Estimate tenths from grid line to point

50. Estimate tenths from grid line to point

51. Estimate tenths from grid line to point

52. Estimate tenths from grid line to point

53. Estimate tenths from grid line to point

54. Estimate tenths from grid line to point

55. Estimate tenths from grid line to point

56. Estimate tenths from grid line to point

57. Estimate tenths from grid line to point

58. Estimate tenths from grid line to point

59. Estimate tenths from grid line to point

60. Estimate tenths from grid line to point

61. Estimate tenths from grid line to point

62. Estimate tenths from grid line to point

63. Estimate tenths from grid line to point

64. Estimate tenths from grid line to point

65. Estimate tenths from grid line to point

66. Estimate tenths from grid line to point

67. Estimate tenths from grid line to point

68. Estimate tenths from grid line to point

69. Estimate tenths from grid line to point

70. Estimate tenths from grid line to point

71. Estimate tenths from grid line to point

72. Estimate tenths from grid line to point

73. Estimate tenths from grid line to point

74. Estimate tenths from grid line to point

75. Estimate tenths from grid line to point

76. Estimate tenths from grid line to point

77. Estimate tenths from grid line to point

78. Estimate tenths from grid line to point

79. Estimate tenths from grid line to point

80. Estimate tenths from grid line to point

81. Estimate tenths from grid line to point

82. Estimate tenths from grid line to point

83. Estimate tenths from grid line to point

84. Estimate tenths from grid line to point

85. Estimate tenths from grid line to point

86. Estimate tenths from grid line to point

87. Estimate tenths from grid line to point

88. Estimate tenths from grid line to point

89. Estimate tenths from grid line to point

90. Estimate tenths from grid line to point

91. Estimate tenths from grid line to point

92. Estimate tenths from grid line to point

93. Estimate tenths from grid line to point

94. Estimate tenths from grid line to point

95. Estimate tenths from grid line to point

96. Estimate tenths from grid line to point

97. Estimate tenths from grid line to point

98. Estimate tenths from grid line to point

99. Estimate tenths from grid line to point

100. Estimate tenths from grid line to point

INDEX TO ADJOINING SHEETS

Showing magnetic declination 1975

Sheet	Zone	Grid	Zone	Grid
51TUS211	51T	U	51TUS212	51T
51TUS211	51T	U	51TUS210	51T
51TUS211	51T	U	51TUS213	51T
51TUS211	51T	U	51TUS214	51T
51TUS211	51T	U	51TUS215	51T
51TUS211	51T	U	51TUS216	51T
51TUS211	51T	U	51TUS217	51T
51TUS211	51T	U	51TUS218	51T
51TUS211	51T	U	51TUS219	51T
51TUS211	51T	U	51TUS220	51T
51TUS211	51T	U	51TUS221	51T
51TUS211	51T	U	51TUS222	51T
51TUS211	51T	U	51TUS223	51T
51TUS211	51T	U	51TUS224	51T
51TUS211	51T	U	51TUS225	51T
51TUS211	51T	U	51TUS226	51T
51TUS211	51T	U	51TUS227	51T
51TUS211	51T	U	51TUS228	51T
51TUS211	51T	U	51TUS229	51T
51TUS211	51T	U	51TUS230	51T
51TUS211	51T	U	51TUS231	51T
51TUS211	51T	U	51TUS232	51T
51TUS211	51T	U	51TUS233	51T
51TUS211	51T	U	51TUS234	51T
51TUS211	51T	U	51TUS235	51T
51TUS211	51T	U	51TUS236	51T
51TUS211	51T	U	51TUS237	51T
51TUS211	51T	U	51TUS238	51T
51TUS211	51T	U	51TUS239	51T
51TUS211	51T	U	51TUS240	51T
51TUS211	51T	U	51TUS241	51T
51TUS211	51T	U	51TUS242	51T
51TUS211	51T	U	51TUS243	51T
51TUS211	51T	U	51TUS244	51T
51TUS211	51T	U	51TUS245	51T
51TUS211	51T	U	51TUS246	51T
51TUS211	51T	U	51TUS247	51T
51TUS211	51T	U	51TUS248	51T
51TUS211	51T	U	51TUS249	51T
51TUS211	51T	U	51TUS250	51T
51TUS211	51T	U	51TUS251	51T
51TUS211	51T	U	51TUS252	51T
51TUS211	51T	U	51TUS253	51T
51TUS211	51T	U	51TUS254	51T
51TUS211	51T	U	51TUS255	51T
51TUS211	51T	U	51TUS256	51T
51TUS211	51T	U	51TUS257	51T
51TUS211	51T	U	51TUS258	51T
51TUS211	51T	U	51TUS259	51T
51TUS211	51T	U	51TUS260	51T
51TUS211	51T	U	51TUS261	51T
51TUS211	51T	U	51TUS262	51T
51TUS211	51T	U	51TUS263	51T
51TUS211	51T	U	51TUS264	51T
51TUS211	51T	U	51TUS265	51T
51TUS211	51T	U	51TUS266	51T
51TUS211	51T	U	51TUS267	51T
51TUS211	51T	U	51TUS268	51T
51TUS211	51T	U	51TUS269	51T
51TUS211	51T	U	51TUS270	51T
51TUS211	51T	U	51TUS271	51T
51TUS211	51T	U	51TUS272	51T
51TUS211	51T	U	51TUS273	51T
51TUS211	51T	U	51TUS274	51T
51TUS211	51T	U	51TUS275	51T
51TUS211	51T	U	51TUS276	51T
51TUS211	51T	U	51TUS277	51T
51TUS211	51T	U	51TUS278	51T
51TUS211	51T	U	51TUS279	51T
51TUS211	51T	U	51TUS280	51T
51TUS211	51T	U	51TUS281	51T
51TUS211	51T	U	51TUS282	51T
51TUS211	51T	U	51TUS283	51T
51TUS211	51T	U	51TUS284	51T
51TUS211	51T	U	51TUS285	51T
51TUS211	51T	U	51TUS286	51T
51TUS211	51T	U	51TUS287	51T
51TUS211	51T	U	51TUS288	51T
51TUS211	51T	U	51TUS289	51T
51TUS211	51T	U	51TUS290	51T
51TUS211	51T	U	51TUS291	51T
51TUS211	51T	U	51TUS292	51T
51TUS211	51T	U	51TUS293	51T
51TUS211	51T	U	51TUS294	51T
51TUS211	51T	U	51TUS295	51T
51TUS211	51T	U	51TUS296	51T
51TUS211	51T	U	51TUS297	51T
51TUS211	51T	U	51TUS298	51T
51TUS211	51T	U	51TUS299	51T
51TUS211	51T	U	51TUS300	51T

