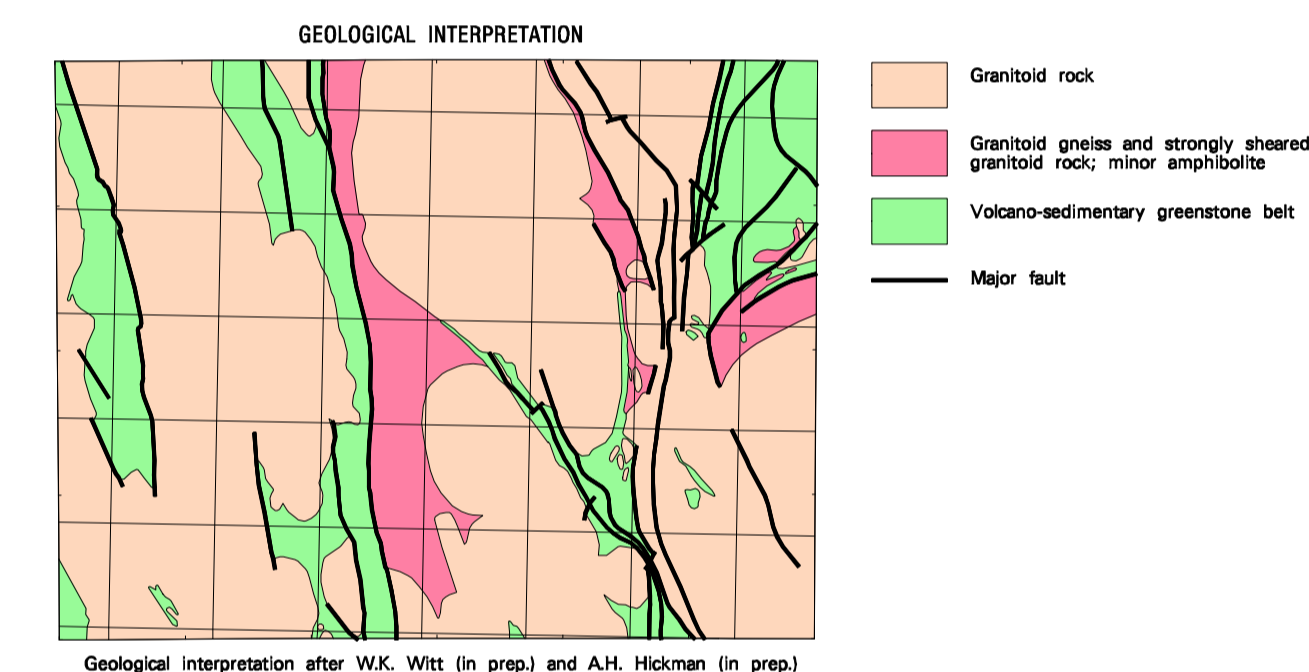
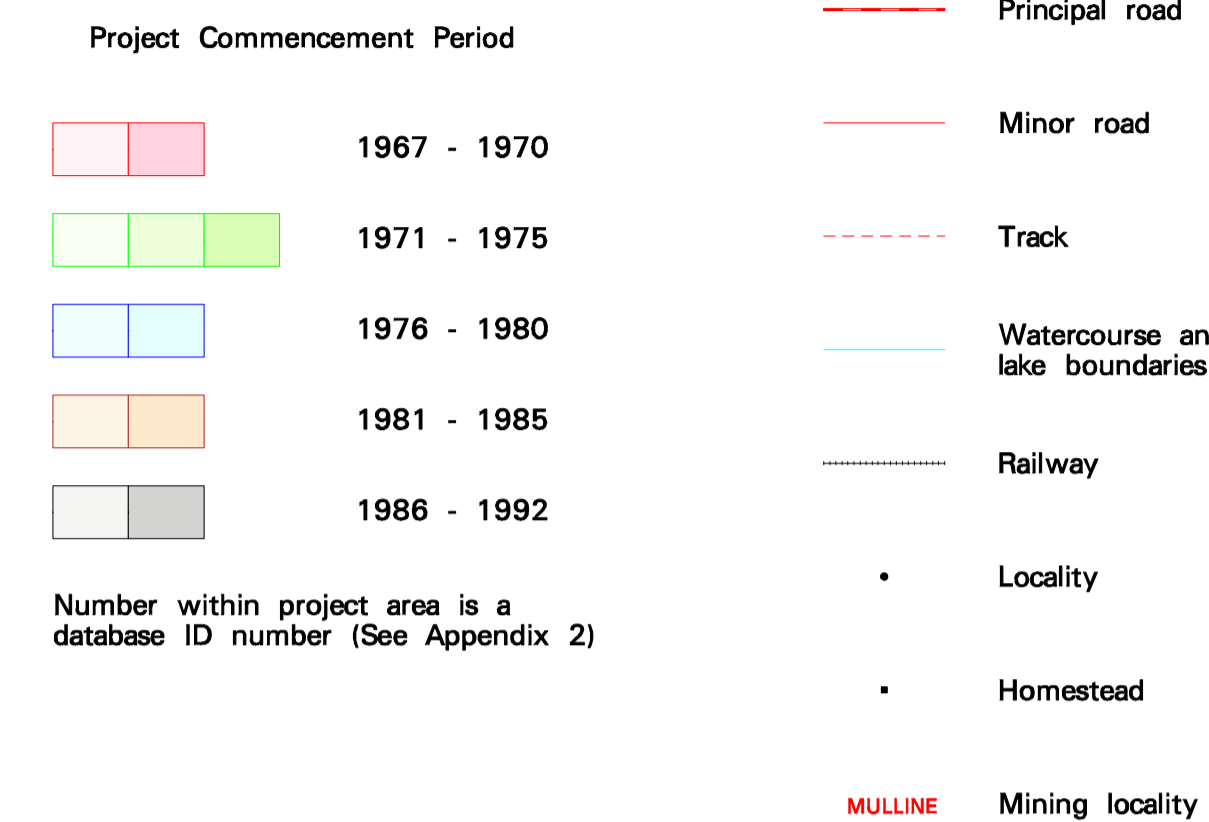
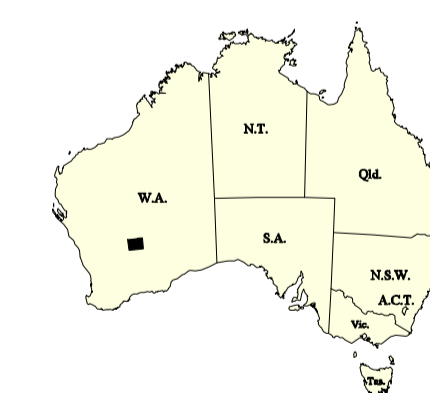


COMPANY PROJECTS WITH SURFACE
GEOCHEMISTRY DATA IN OPEN FILE
REPORTS (at June 1994)

INDEX TO ADJOINING SHEETS		
YUAMMI SH 50-4	LEONORA SH 51-1	LAVERTON SH 51-2
BARLEE SH 50-8	MENZIES SH 51-5	EDAJUNA SH 51-6
JACKSON SH 50-12	KALGOORLIE SH 51-8	KURNALPI SH 51-10



INDEX TO 1:100 000 MAP SHEETS WITHIN MENZIES 1:250 000		
MT MASON 2939	BALLARD 3039	MELITA 3139
MULLINE 2958	RIVERINA 3058	MENZIES 3158

MENZIES

COMPANY PROJECTS WITH SURFACE
GEOCHEMISTRY DATA IN OPEN FILE
REPORTS (at June 1994)PRELIMINARY EDITION December 1994
© Western Australia 1994

Edited by G. Strong and S. Loan
Cartography by: A. Rogers, K. Smith and T. Lynans of the Cartographic Services Branch,
Surveys and Mapping Division, Department of Minerals and Energy, Western Australia
Topographic information supplied by the Australian Surveying and Land Information Group
This map compiled digitally from data held by Geological Survey Western Australia and
and stored in the ORACLE database management system. Compiled and produced using a
Geographic Information System, Arc/Info, and available in digital form.
Copies of this map, or extracts from the database, are available from the Department of
Minerals and Energy, 100 Plain Street, East Perth, 6004



DEPARTMENT OF MINERALS AND ENERGY
HON. GEORGE CASH J.P., M.L.C.
MINISTER FOR MINES
K.A. PERRY, DIRECTOR GENERAL

SCALE 1:250 000

0 5 10 15 20 25 30
KILOMETRES

TRANSVERSE MERCATOR PROJECTION

Grid lines indicate 20 000 metre interval of the Australian Map Grid Zone 51



PETRO GUJ
DIRECTOR, GEOLOGICAL SURVEY
OF WESTERN AUSTRALIA

Compiled by: J. Faulkner 1994

Compiled from open file company reports held by Geological Survey of Western Australia.

The recommended reference for this map is: Faulkner, J., 1994, Menzies, W.A. -- Company
projects with surface geochemistry data in open file reports (prelim. ed): Western
Australia Geological Survey, Geochemical mapping of the Menzies 1:250 000 sheet, Plate 2.

WARNING: Inks are water soluble and will
fade with prolonged exposure to light