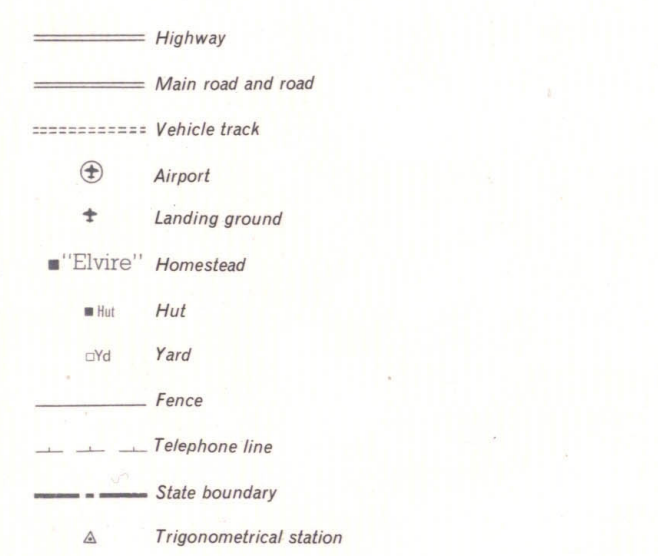
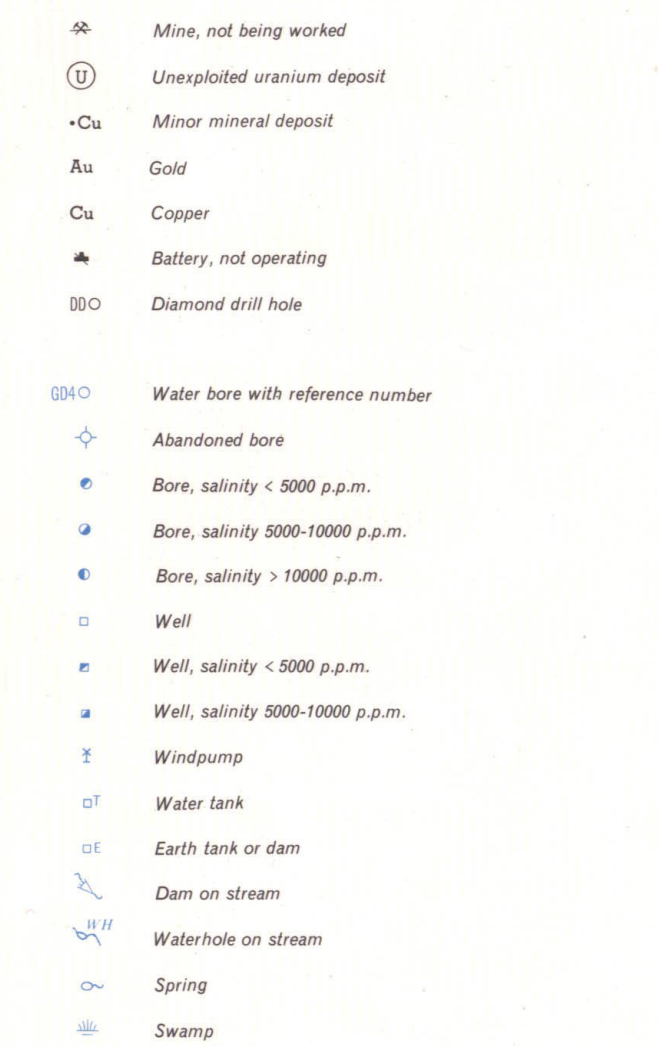
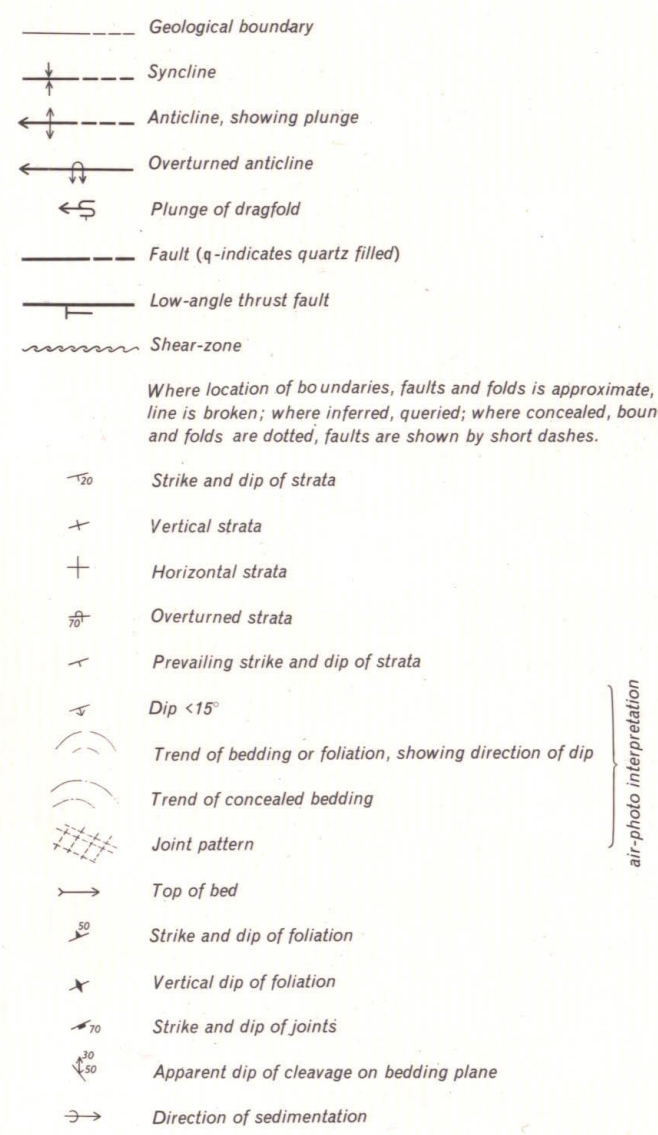
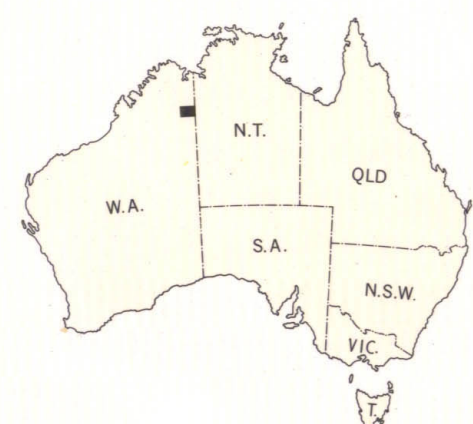


Reference



Compiled and published by the Bureau of Mineral Resources, Geology and Geophysics, Department of National Development, in conjunction with the Geological Survey of Western Australia. Issued under the authority of the Hon. David Fairbairn, Minister for National Development. Base map compiled by the Mapping Branch, Department of Lands and Surveys, Perth, Western Australia. Aerial photography by the Royal Australian Air Force; complete vertical coverage at 1:50,000 scale.

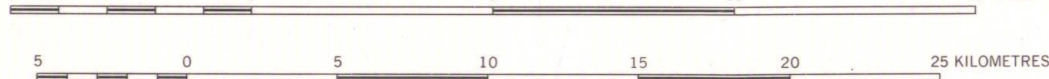


INDEX TO ADJOINING SHEETS

WESTERN AUSTRALIA	NEW SOUTH WALES	SOUTH AUSTRALIA	NORTHERN TERRITORY	VICTORIA
SE 52-10	SE 52-11	SE 52-12	SE 52-13	SE 52-14
SE 52-15	SE 52-16	SE 52-17	SE 52-18	SE 52-19
SE 52-20	SE 52-21	SE 52-22	SE 52-23	SE 52-24
SE 52-25	SE 52-26	SE 52-27	SE 52-28	SE 52-29
SE 52-30	SE 52-31	SE 52-32	SE 52-33	SE 52-34
SE 52-35	SE 52-36	SE 52-37	SE 52-38	SE 52-39
SE 52-40	SE 52-41	SE 52-42	SE 52-43	SE 52-44
SE 52-45	SE 52-46	SE 52-47	SE 52-48	SE 52-49
SE 52-50	SE 52-51	SE 52-52	SE 52-53	SE 52-54

ANNUAL CHANGE DATE

Scale 1:250,000



CROWN COPYRIGHT RESERVED

GREY NUMBERED LINES INDICATE THE 200M YARD TRANSVERSE MERCATOR GRID, ZONES 3 AND 4 (AUSTRALIA SERIES)

Section

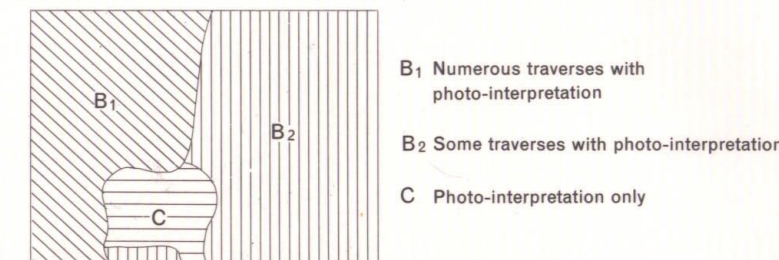
Canozoic sediments omitted from section

Attitude of faults not known

Folding schematic

Scale: 1/4" = 1 mile

GEOLOGICAL RELIABILITY DIAGRAM



Printed by Mercury Press, Hobart.

Reference

Qa	Alluvium
Crt	Travertine
Czs	Sand, soil
Czb	Black clay soil
Ctl	Ferruginous pisolitic soil
Ti	Chalcidonic limestone, chert, siltstone
Tp	Laterite
Tf	Gravel, sandstone and siltstone

DEVONIAN (?)	Elder Sandstone	Db	Friable, cross-bedded quartz sandstone; cobble conglomerate at base
MIDDLE CAMBRIAN	Headleys Limestone	Cmy	Massive to laminated grey limestone with chert nodules
LOWER CAMBRIAN	Antrim Plateau Volcanics	Cla	Amphibolitic to felsitic basalt and rare andesite; basalt agglomerate, tuff and chert

UNDIFFERENTIATED	Gardiner Beds	Pyd	Blocky quartz sandstone and rare pebble conglomerate; ferruginous sandstone
			Siltstone, shale and algal dolomite

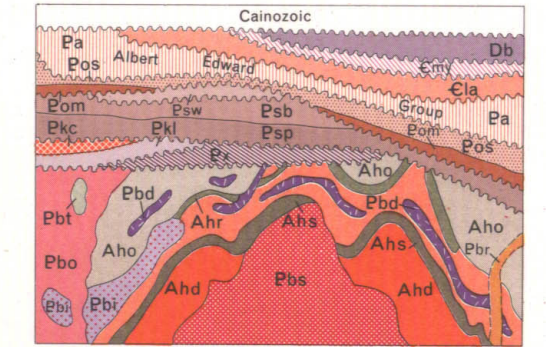
ADELAIDEAN	Flat Rock Formation	Paf	Fissile purple shale, ferruginous dolomitic sandstone, quartz sandstone
	Nyuluss Sandstone	Pny	Flaggy quartz sandstone, green feldspathic sandstone, minor pebble conglomerate
	Timperley Shale	Pti	Massive grey and green shale, minor siltstone and dolomite
	Bonall Dolomite	Pbo	Flaggy yellow and light grey dolomite; minor dolomite breccia and shale
ADELAIDEAN OR CARPENTARIAN	Elvire Formation	Pee	Maroon shale with green siltstone, minor sandstone
	Mount Forster Sandstone	Pao	Quartz sandstone, fine quartz conglomerate, minor shale and siltstone
	Ranford Formation	Pra	Khaki-green, brown and grey thin-bedded fine sandstone and siltstone, minor shale
			Dolomitic feldspathic sandstone
CARPENTARIAN	Moonlight Valley Tillite	Pom	Tillite, overlain by laminated pink dolomite
	Wade Creek Sandstone	Psw	Quartz sandstone
	Bungle Bungle Dolomite	Psb	Dolomite and dolomitic shale, minor quartz sandstone
	Mount Parker Sandstone	Psp	Blocky to flaggy pure quartz sandstone, quartz pebble conglomerate at base
ADELAIDEAN OR CARPENTARIAN	Carson Volcanics	Pxc	Volcanic agglomerate, epidotised vesicular basalt, basic crystal tuff
	King Leopold Sandstone	Pkl	Blocky quartz sandstone
	Moola Bulla Formation	Pm	Shale, sandstone, feldspathic arkose, greywacke, conglomerate

ADELAIDEAN OR CARPENTARIAN	Undifferentiated	Pst	Rhyolite, dacite, microgranite
		Pt	Intimate mixture of granite, gabbro and metamorphic rocks
	Sophie Downs Granite	Pts	Coarse even-grained granite
	Row River Granite	Pto	Porphyritic to even-grained coarse-grained granite and granodiorite
ADELAIDEAN OR CARPENTARIAN	Tickalara Metamorphics	Pti	Calc-silicates, paragneiss, amphibolite
	McIntosh Gabbro	Pg	Unaltered gabbro, norite, troctolite, minor dolerite, syenite, pyroxenite
	Woodward Dolerite	Pd	Dolerite and ultrabasic sills and dykes intruding Halls Creek Group

ADELAIDEAN OR CARPENTARIAN	Undifferentiated	Ah	Schist, quartzite
	Olympio Formation	Aho	Sub-greywacke, feldspathic sub-greywacke, arkose, subordinate shale and siltstone
	Biscay Formation	Ahr	Pillow basalt, basalt, dolerite dykes, minor andesite, sub-greywacke and slate
			Limestone, dolomite, calc-silicates, carbonate-rich basic rocks
ADELAIDEAN OR CARPENTARIAN			Greywacke, slate, carbonaceous slate, minor chert
	Saunders Creek Formation	Ahs	Quartz sandstone, greywacke, fine conglomerate, slate
	Ding Dong Downs Volcanics	Ahd	Amphibolitic epidotised basalt, crystal tuff, rhyolite, greywacke

* Subdivisions of the Precambrian time-scale used by the Geological Survey of Western Australia, shown in grey.

DIAGRAMMATIC RELATIONSHIP OF MAIN ROCK UNITS

GORDON DOWNS
SHEET SE 52-10

Copies of this map may be obtained from the Bureau of Mineral Resources, Geology and Geophysics, Canberra, A.C.T., or the Geological Survey of Western Australia, Perth.