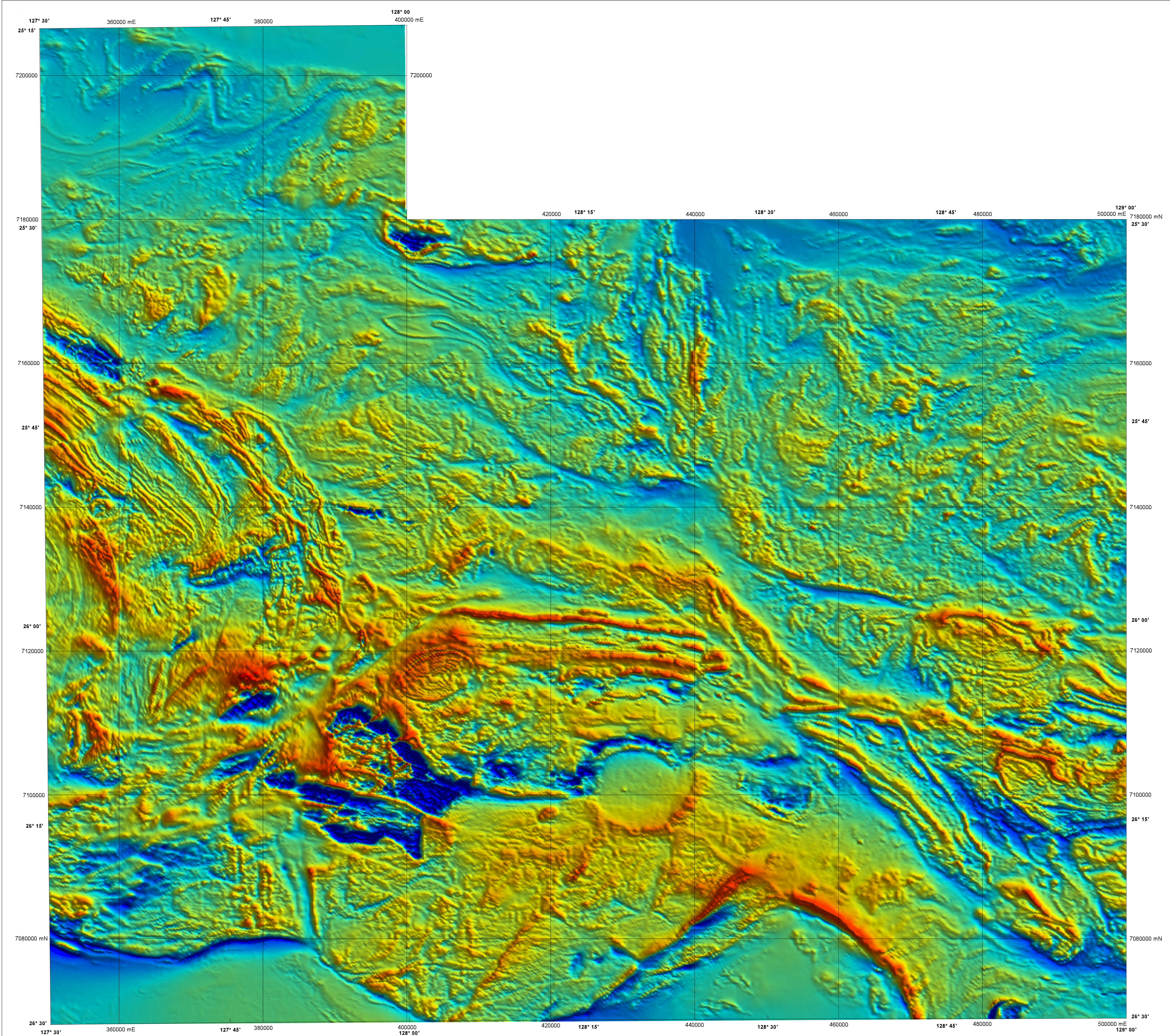


WEST MUSGRAVE

GEOLOGICAL SURVEY OF WESTERN AUSTRALIA

PART SHEETS SG 52-6 and SG 52-10

1:250 000 TOTAL MAGNETIC INTENSITY IMAGE



58700
57600
56500
55400
54300
nT

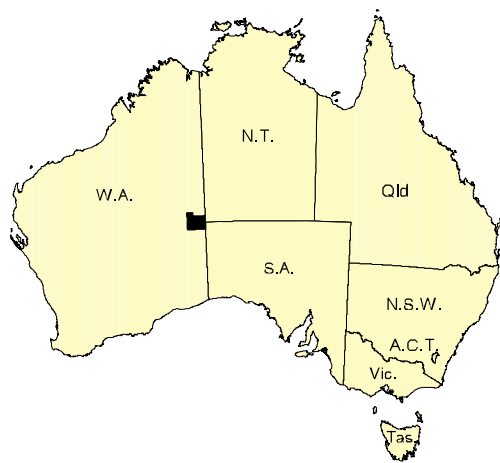
Data acquired in 2002 were merged with private company data flown in 1998, which now form part of the National Airborne Geophysics Database.

Published by the Geological Survey of Western Australia. Copies are available from the Information Centre, Department of Mineral and Petroleum Resources, 100 Plain Street, East Perth, WA 6004. Phone (08) 9222 3459, Fax (08) 9222 3444, www.mpr.wa.gov.au

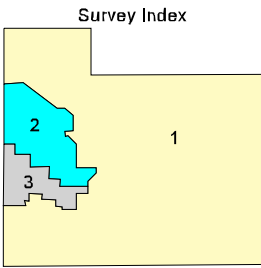
Secondary data processing R. Franklin
Image processing J. H. Watt
Cartography M. Vicentini
Geophysics Project Manager S. H. D. Howard

These data are also available in digital form from Geoscience Australia Airborne Geophysical Data Sales, GPO Box 378, Canberra, ACT 2601. Phone (02) 6249 9478, Fax (02) 6249 9913, www.ga.gov.au

The recommended reference for this map is:
GEOLOGICAL SURVEY OF WESTERN AUSTRALIA, 2002. West Musgrave, W.A. Part Sheets SG 52-6 and SG 52-10: Western Australia Geological Survey, 1:250 000 Total Magnetic Intensity Image.



SHEET INDEX	
COBBE SG 52-1	RAWLINSON SG 52-3
BENTLEY SG 52-5	COOTE SG 52-4
TALBOT SG 52-8	COOPER SG 52-10
LENNIE SG 52-13	WADSWORTH SG 52-14



This image is covered by the three surveys listed in the table below and shown on the survey index. The grid cell size is 90 m.

Survey ID	Survey Name	Line Spacing	Ground clearance	Flight direction	Contractor	Date	Client
1	West Musgrave	400 m	80 m	0° - 180°	Fargo	2002	GSWA / GA
2	Jameson	400 m	80 m	90° - 270°	Kerron	1998	WMC Resources Ltd
3	Jameson Infill	200 m	80 m	90° - 270°	Kerron	1998	WMC Resources Ltd

Department of Mineral and Petroleum Resources

CLIVE BROWN, M.L.A.
MINISTER FOR STATE DEVELOPMENT

JIM LIMERICK
DIRECTOR GENERAL

Geological Survey of Western Australia

TIM GIBBERT
DIRECTOR

Geoscience Australia

PRODUCT OF THE NATIONAL GEOSCIENCE UNITING AGREEMENT

SCALE 1:250 000

5000 0 5 10 15 20 25 30
Metres Kilometres

UNIVERSAL TRANSVERSE MERCATOR PROJECTION
HORIZONTAL DATUM: GEODETIC DATUM OF AUSTRALIA
Grid lines indicate 20 000 metre interval of the Map Grid Australia Zone 52

The Map Grid Australia (MGA) is based on the Geocentric Datum of Australia 1984 (GDA84).
GDA84 positions are compatible within one metre of the datum WGS84 positions.

GEOLOGICAL SURVEY OF WESTERN AUSTRALIA

TOTAL MAGNETIC INTENSITY

WEST MUSGRAVE

PART SHEETS SG 52-6 and SG 52-10

First Edition 2002

© Western Australia 2002