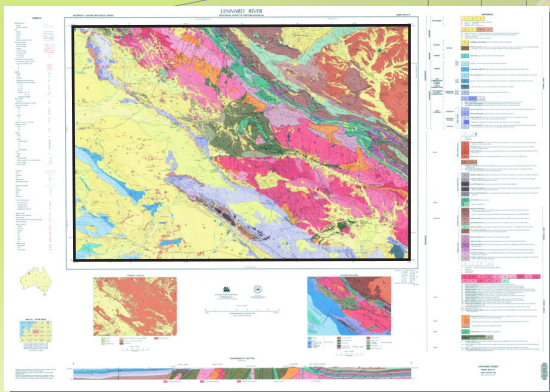


ATLAS OF 1:250 000 GEOLOGICAL SERIES MAP IMAGES WESTERN AUSTRALIA



January 2005 update



Geological Survey of
Western Australia



ATLAS OF 1:250 000 GEOLOGICAL SERIES MAP IMAGES, WESTERN AUSTRALIA

January 2005 update

1:250 000 Digital Image Package

Data supplied in ArcView shapefiles, ECW images, and MS Access database formats.

Self-loading Atlas Viewer software included on this disk

- 1:250 000 map sheet index
- 1:2 500 000 State generalized geology
- Images (ECW format) of all latest edition WA 1:250 000 Geological Map Series to 31 December 2004
- WA 1:250 000 geological mosaic 2004 — Image mosaic (ECW format) of WA 1:250 000 Geological Map Series to 31 December 2004
- WA NATMAP Raster mosaic 2003 — Image mosaic (ECW format) of WA 1:250 000 topographic maps
- Towns
- Roads

The information on this disk remains the property of the Western Australia Department of Industry and Resources and is covered by Crown copyright. Copying or on-selling of these data without prior written permission of the Department of Industry and Resources will be seen as a breach of copyright.

March 2005



Atlas Viewer has been designed for the Windows operating system, and has been tested to run on Windows NT4/ME/2000/XP

Geological Survey of Western Australia
100 Plain Street East Perth 6004 Western Australia
Phone: +61 8 9222 3168 Facsimile: +61 8 9222 3633
www.doir.wa.gov.au/gswa

Atlas of 1:250 000 geological series map images, Western Australia, April 2005 update

Product available from First Floor counter, Mineral House, 100 Plain St, East Perth, WA 6004, AUSTRALIA. Or ordered through: www.dmp.wa.gov.au/ebookshop

Enquiries to Email: gsd.dda@dmp.wa.gov.au; Phone: +61 8 9222 3459; Fax: +61 8 9222 3444.

Cost: \$22 [inc. GST]