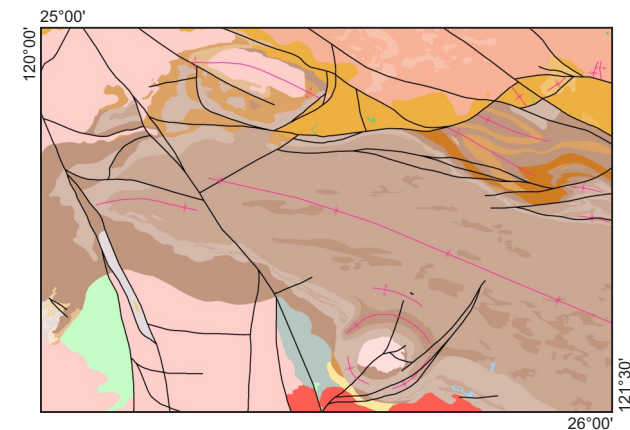


## Nabberu SG51-5 1:250 000 digital layer

The Nabberu geological map covers a new compilation of six 1:100 000 geological map sheets. Central to the area is the Earraheedy Syncline, a southeasterly plunging and trending structure with topographically prominent limbs of granular iron-formation of the Frere Formation (1891–1876 Ma), and with Miningarra Group (1876–1650 Ma) sediments in the core of the syncline. To the south of the syncline are sediments of the Toolgoo, Mooloogool and Windplain Groups, as old as 2170 Ma, overlying basement rocks of Archean Yilgarn Craton granite and greenstones of the Eastern Goldfields Superterrane. To the north of the Earraheedy Syncline are sediments of the Scorpion Group (1654–1455 Ma) and Salvation Group (1229–1080 Ma). Folding of the older units took place during the Capricorn Orogeny (1817–1772 Ma) and Mangaroon Orogeny (1680–1620 Ma), and late-stage (post-1080 Ma) faulting crosscuts all units. A spectacular feature is the Shoemaker impact structure on the southern limb of the Earraheedy Syncline. The impact has an interpreted Ar–Ar date of  $568 \pm 20$  Ma.



[https://dascsbx.dmirs.wa.gov.au/home?productAlias=100k\\_interpgeoWA](https://dascsbx.dmirs.wa.gov.au/home?productAlias=100k_interpgeoWA)

Statewide spatial datasets - [GDA1994]

Geology

1:100 000 State interpreted bedrock geology of Western Australia - [GDA1994]

Last Updated	Size	File Format	
27/05/2022	147.59 MB	ESRI Shape File (with QGIS file)	<a href="#">Download</a>
27/05/2022	81.18 MB	ESRI File Geodatabase	<a href="#">Download</a>
27/05/2022	94.46 MB	MapInfo TAB	<a href="#">Download</a>

## Nabberu SG51-5 1:250 000 digital layer, 2020

Enquiries to [gds.data@dmirs.wa.gov.au](mailto:gds.data@dmirs.wa.gov.au); Phone: +61 8 9222 3459

Free (online): Go to the Data and Software Centre (<https://dasc.dmirs.wa.gov.au>) > Statewide Spatial Datasets > Geology > 1:100 000 interpreted bedrock geology of Western Australia



Government of Western Australia  
Department of Mines, Industry Regulation  
and Safety

Geological Survey of  
Western Australia

