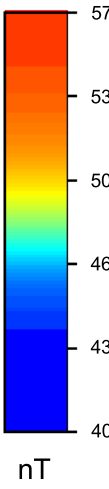
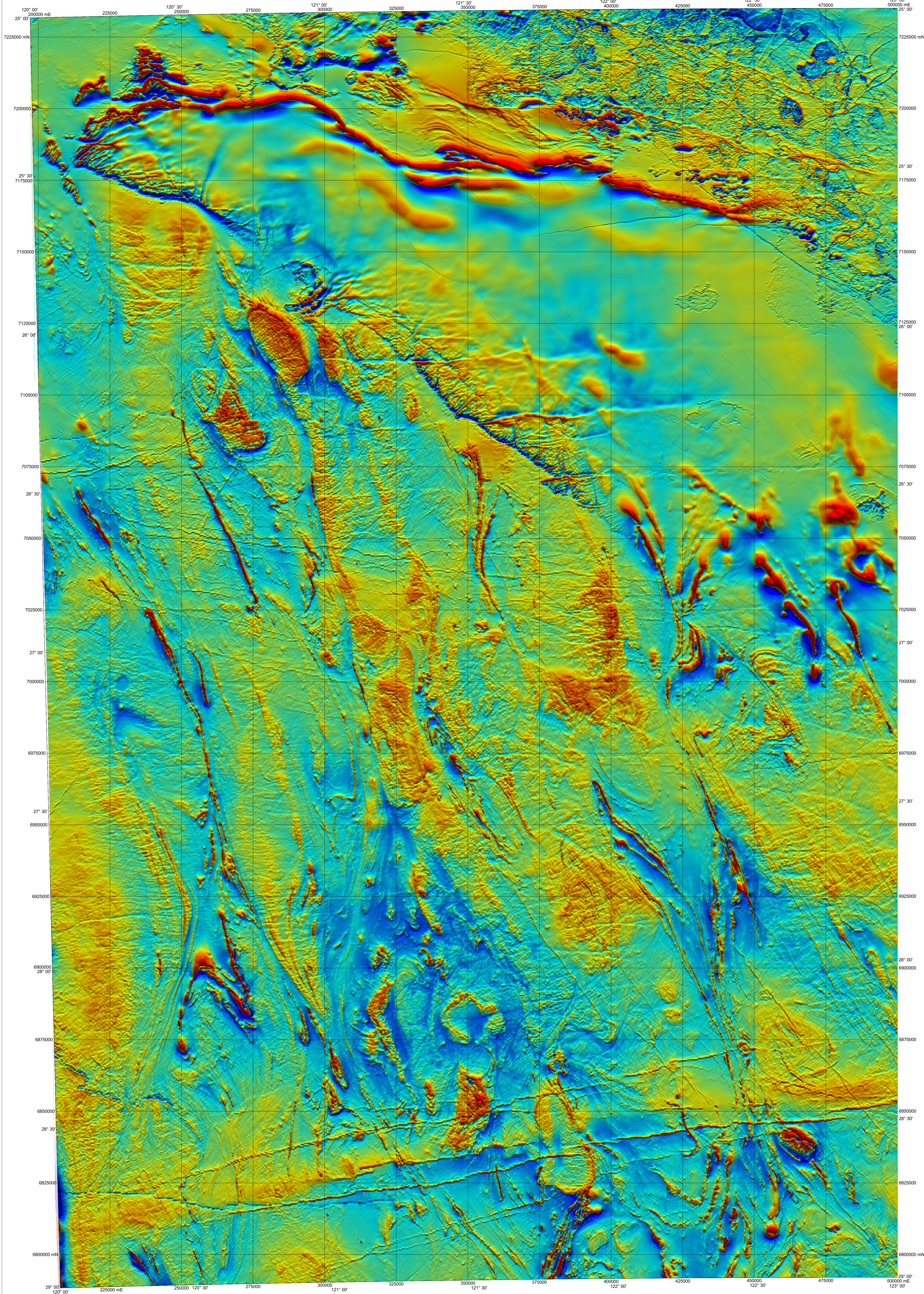


YANDAL GREENSTONE BELT AND ADJACENT AREAS

GEOLOGICAL SURVEY OF WESTERN AUSTRALIA

SHEETS SG 51-5, SG 51-6, SG 51-9, SG 51-10, SG 51-13, SG 51-14, SH 51-1, SG 51-2

1:500 000 TOTAL MAGNETIC INTENSITY IMAGE



Compiled by J. H. Watt

Project geophysicist D. Howard

Edited by G. Loan and N. Tetlow

Cartography by J. Kirk

Pixel colours used in this image have been enhanced using histogram equalisation and are optimized for the data range in this area. Pixel colours are not necessarily the same as that used for images of adjacent or overlapping areas in this series

Published by the Geological Survey of Western Australia. Copies are available from the Information Centre, Department of Minerals and Energy, 100 Plain Street, East Perth, WA 6004. Phone (08) 5522 3459; Fax (08) 5222 3444

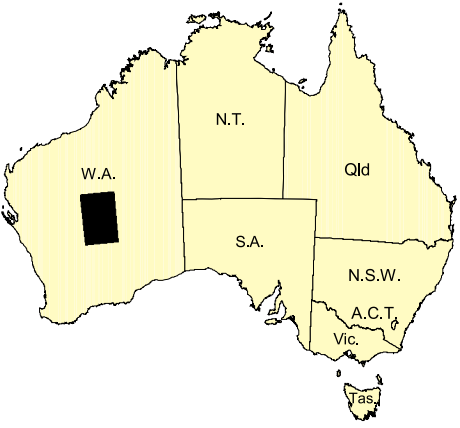
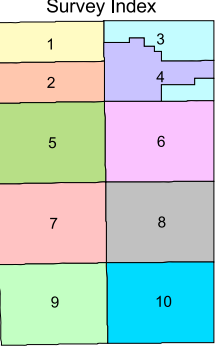
Digital data available from AGSO Airborne Geophysical Data Sales, GPO Box 378, Canberra, ACT 2601. Phone (02) 6249 9210. Fax (02) 6249 9913. www.agso.gov.au

The recommended reference for this map is:

GEOLOGICAL SURVEY OF WESTERN AUSTRALIA, 2000. Yandal Greenstone Belt and adjacent areas, W.A. Sheets SG 51-5, SG 51-6, SG 51-9, SG 51-10, SG 51-13, SG 51-14, SH 51-1, SH 51-2. Western Australia Geological Survey, 1:500 000 Total Magnetic Intensity Image

This magnetic intensity image was created from the ten survey datasets listed below. The area covered by each survey is shown on the survey index. The grid cell size is 100m and the survey grids were merged using Interop Grid Stitch Software.

Survey ID	1:250 000 map sheet	Project ID (AGSO)	Line Spacing (m)	Line Direction	Termin Clearance (m)	Date	Operator
1	Nabberu P632	400	0 - 180 degrees	80	1996	AGSO	
2	Nabberu P638	400	90 - 270 degrees	80	1996	KEVRON	
3	Stanley P725	400	90 - 270 degrees	80	1999	TAG	
4	Stanley P725	300	90 - 270 degrees	80	1986	WGC	
5	Wiluna P605	400	90 - 270 degrees	60	1990/1991	WGC	
6	Kingston P688	400	90 - 270 degrees	80	1998	AGSO	
7	Sir Samuel P686	400	90 - 270 degrees	100	1993	AGSO	
8	Duketon P613	400	90 - 270 degrees	80	1994	WGC	
9	Leonora P686	400	90 - 270 degrees	60	1992	WGC	
10	Laverton P687	400	90 - 270 degrees	60	1993	WGC	



SHEET INDEX			
COLLIER SG 50-4	BULLEN SG 51-1	TRANROR SG 51-2	MADLEY SG 51-3
PEAK HILL SG 50-8	NABBERU SG 51-5	STANLEY SG 51-6	HERBERT SG 51-7
GLINGARRY SG 50-12	WILUNA SG 51-9	KINGSTON SG 51-10	ROBERT SG 51-11
SANDSTONE SG 50-16	SIR SAMUEL SG 51-13	DUKETON SG 51-14	THROSBELL SG 51-15
YOLAMMI SH 50-4	LEONORA SH 51-1	LAVERTON SH 51-2	RASCH SH 51-3
BARLEE SH 50-8	MENZIES SH 51-5	EDJUKNA SH 51-6	MINGOVAL SH 51-7

WARNING: Inks are water soluble and will fade with prolonged exposure to light



GOVERNMENT OF WESTERN AUSTRALIA
MINISTER FOR MINES
ISSUED FOR INFO



DEPARTMENT OF MINERALS
AND ENERGY
L.L. HARRISON, DIRECTOR GENERAL



ACSO
AIRBORNE GEOPHYSICAL SURVEY
NGMA
PRODUCT OF THE NATIONAL
GEOSCIENCE MAPPIING ACTIVITY



GEOLOGICAL SURVEY OF
WESTERN AUSTRALIA
TECHNICAL DIRECTOR

SCALE 1:500 000

0 5 10 15 20 25 30 35 40 45 50
Metres Kilometres

UNIVERSAL TRANSVERSE MERCATOR PROJECTION
HORIZONTAL DATUM: WORLD GEODETIC SPHEROID 1984
Grid lines indicate 25 000 metre interval of the Map Grid Australia Zone 51



The Map Grid Australia (MGA) is based on the Geocentric Datum of Australia 1984 (GDA84).
GDA84 positions are compatible within one metre of the datum WGS84 positions.

GEOLOGICAL SURVEY OF WESTERN AUSTRALIA

TOTAL MAGNETIC INTENSITY
YANDAL GREENSTONE BELT
AND ADJACENT AREAS

First Edition 2000
© Western Australia 2000