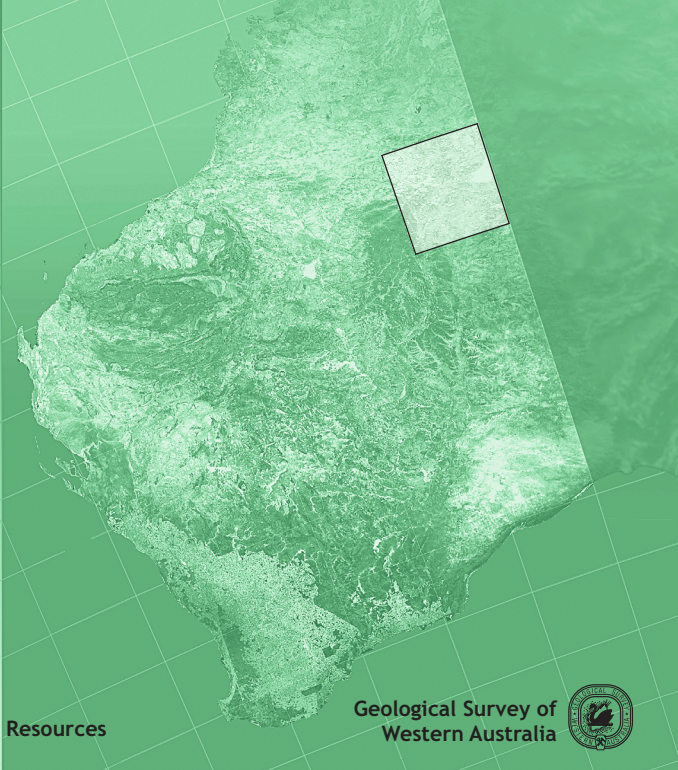


**GSWA RECORD  
2008/17**

# **WEST ARUNTA GEOLOGICAL EXPLORATION PACKAGE**



Department of  
Industry and Resources

Geological Survey of  
Western Australia



## **WEST ARUNTA GEOLOGICAL EXPLORATION PACKAGE**

**GSWA RECORD 2008/17**

Information in this product covers six 1:250 000 geological map sheets: HELENA (SF52-5), MACDONALD (SF52-14), RYAN (SF52-13), STANSMORE (SF52-6), WEBB (SF52-10), and WILSON (SF52-9).

Where data is available, coverage extends onto surrounding 1:250 000 sheet areas.

Data are supplied as ESRI shapefiles, MapInfo files, Microsoft Access 2003, Adobe PDF files, and ECW images. Self-loading GeoVIEWER.WA viewing software is included.

- 1:500 000 state tectonic units
- 1:500 000 regolith geology
- 1:500 000 interpreted bedrock and structural geology
- Geochemistry
- Mineral tenements (TENGRAPH)
- Geophysical surveys (MAGIX)
- 1:250 000 and 1:100 000 map sheet indexes
- Databases and spatial data for:
  - Selected GSWA publications including maps (PDF)
  - GSWA field observation sites (WAROX)
  - Petrography sites (PETRO)
  - GA (GAGEOCHRON) geochronology
  - Mineral exploration activities (EXACT and WAMEX)
  - Mineral deposits and occurrences (WAMIN)
- Aeromagnetic, gravity, radiometric, DEM, SRTM, orthophoto, and Landsat TM images
- Topographic and cultural data

The information on this disk remains the property of the Western Australian Department of Industry and Resources and is covered by Crown copyright. Copying or on-selling of these data without prior written permission of the Department of Industry and Resources will be seen as a breach of copyright.



Kiwirrkura Community



CENTRAL DESERT NATIVE TITLE SERVICES

The authors would like to thank the traditional owners, the Kiwirrkura Community and the Central Desert Native Title Services for their hospitality, help and support, and for allowing access to their lands for the purpose of scientific research.

GeoVIEWER.WA has been designed for the Windows operating system, and has been tested to run on Windows NT4/ME/2000/XP.

Cover image modified from Landsat data,  
courtesy of ACRES

Geological Survey of Western Australia  
100 Plain Street East Perth 6004 Western Australia  
Phone: +61 8 9222 3168 Facsimile: +61 8 9222 3633  
Home page: <http://www.doir.wa.gov.au/gswa>

June 2008  
ISBN 978-1-74168-184-0

## **West Arunta Geological Exploration Package**

Product available from First Floor counter, Mineral House, 100 Plain St, East Perth, WA 6004, AUSTRALIA. Or ordered through: [www.doir.wa.gov.au/ebookshop](http://www.doir.wa.gov.au/ebookshop)

Enquiries to Email: [gsd.dda@doir.wa.gov.au](mailto:gsd.dda@doir.wa.gov.au); Phone: +61 8 9222 3459; Fax: +61 8 9222 3444.

Cost: \$55 [inc. GST]