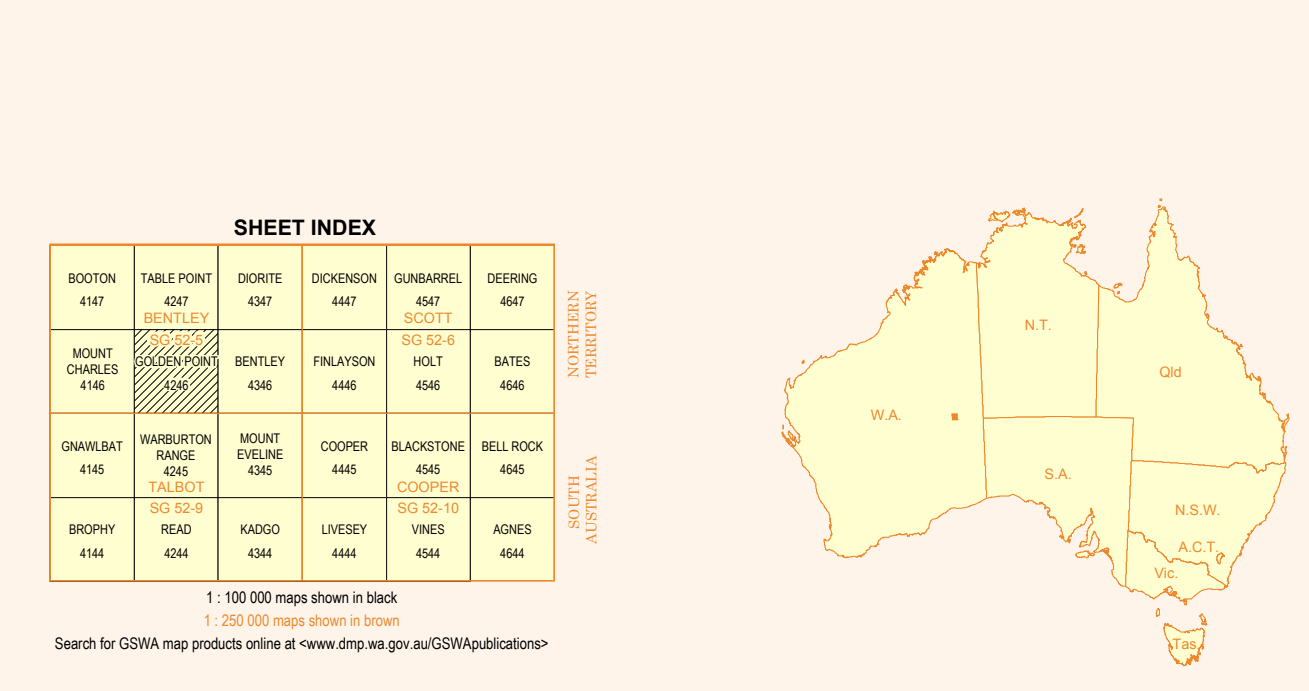
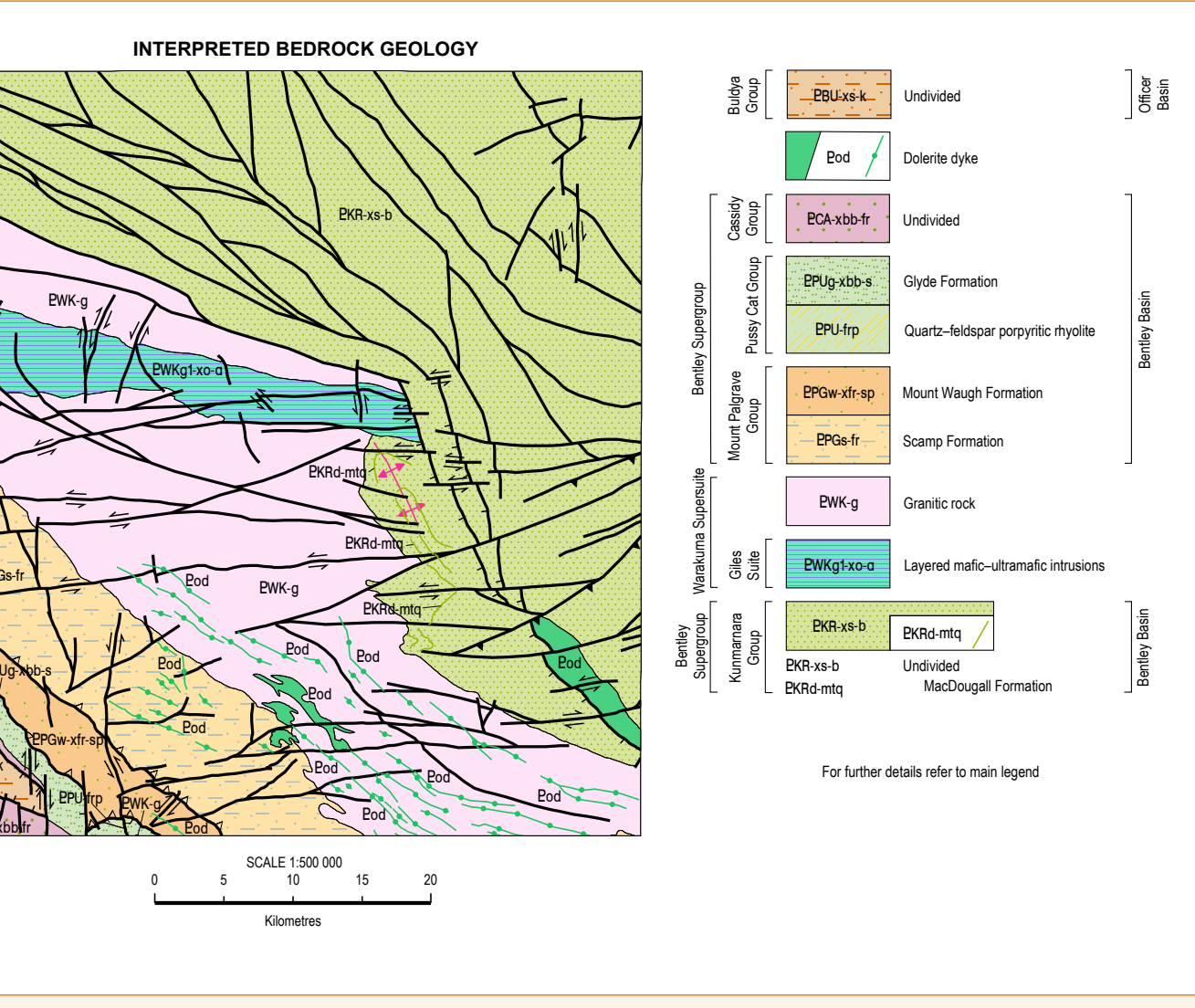
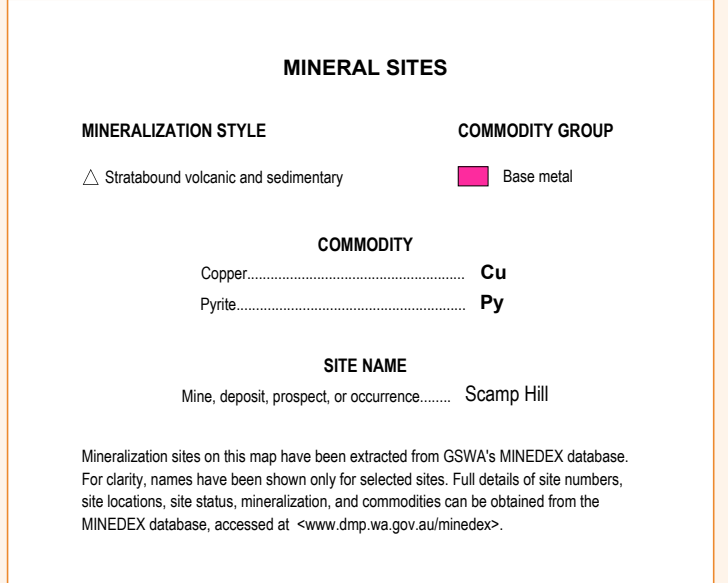
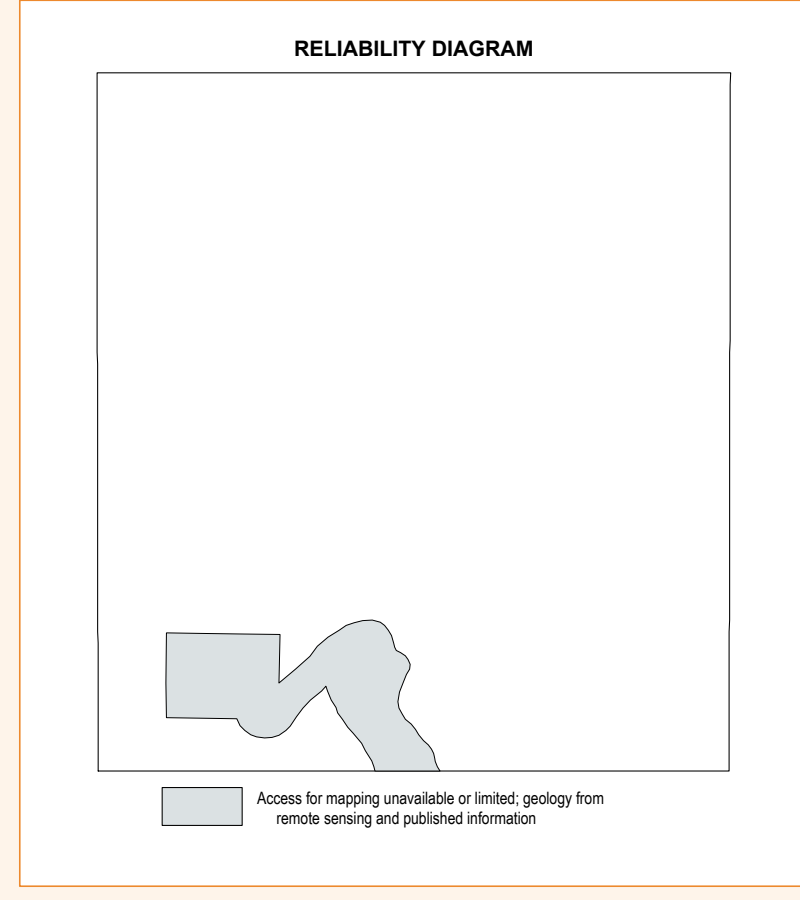
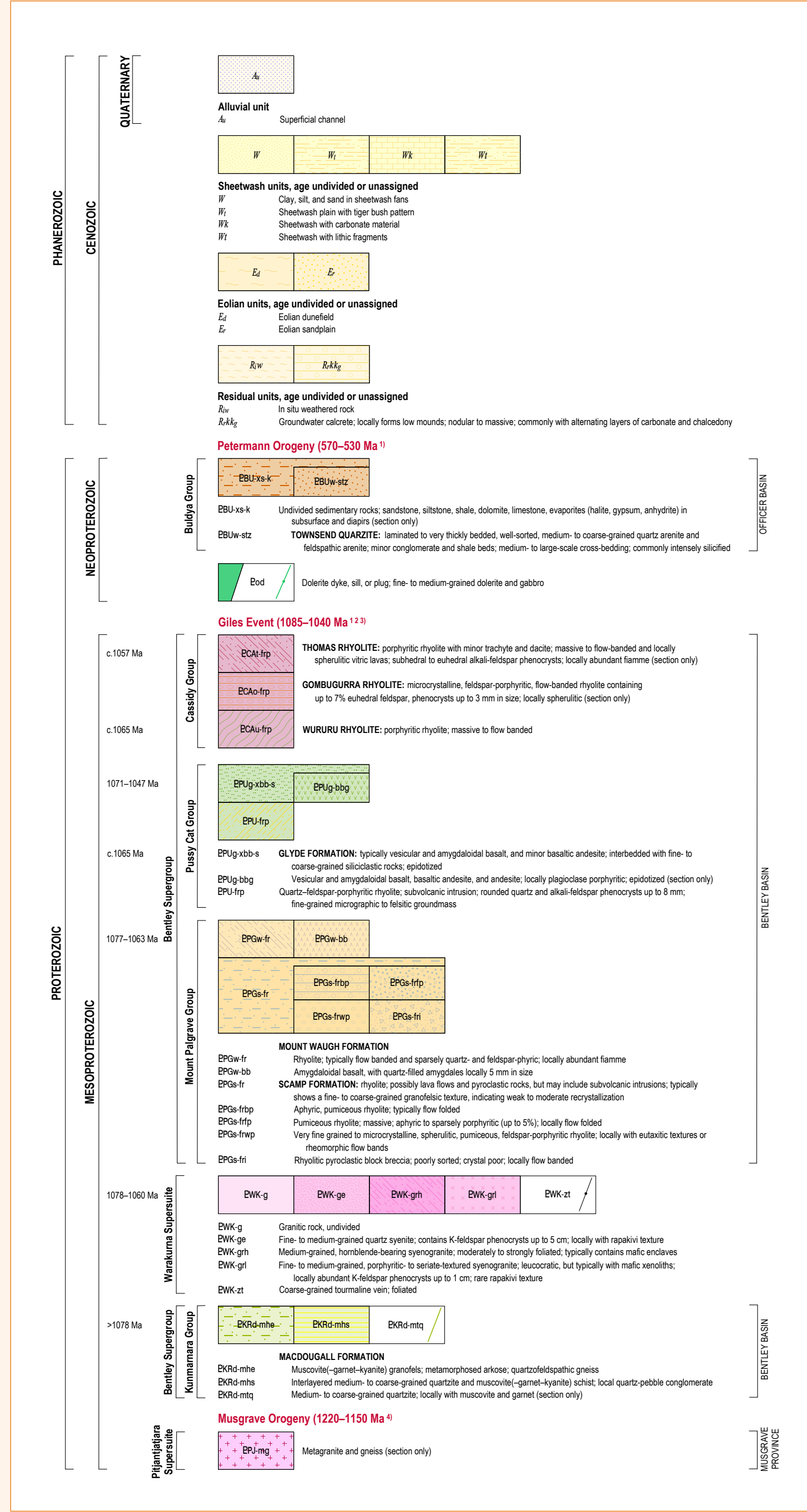
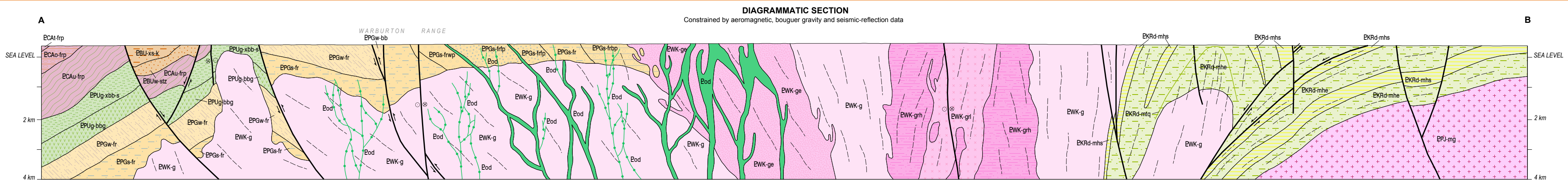
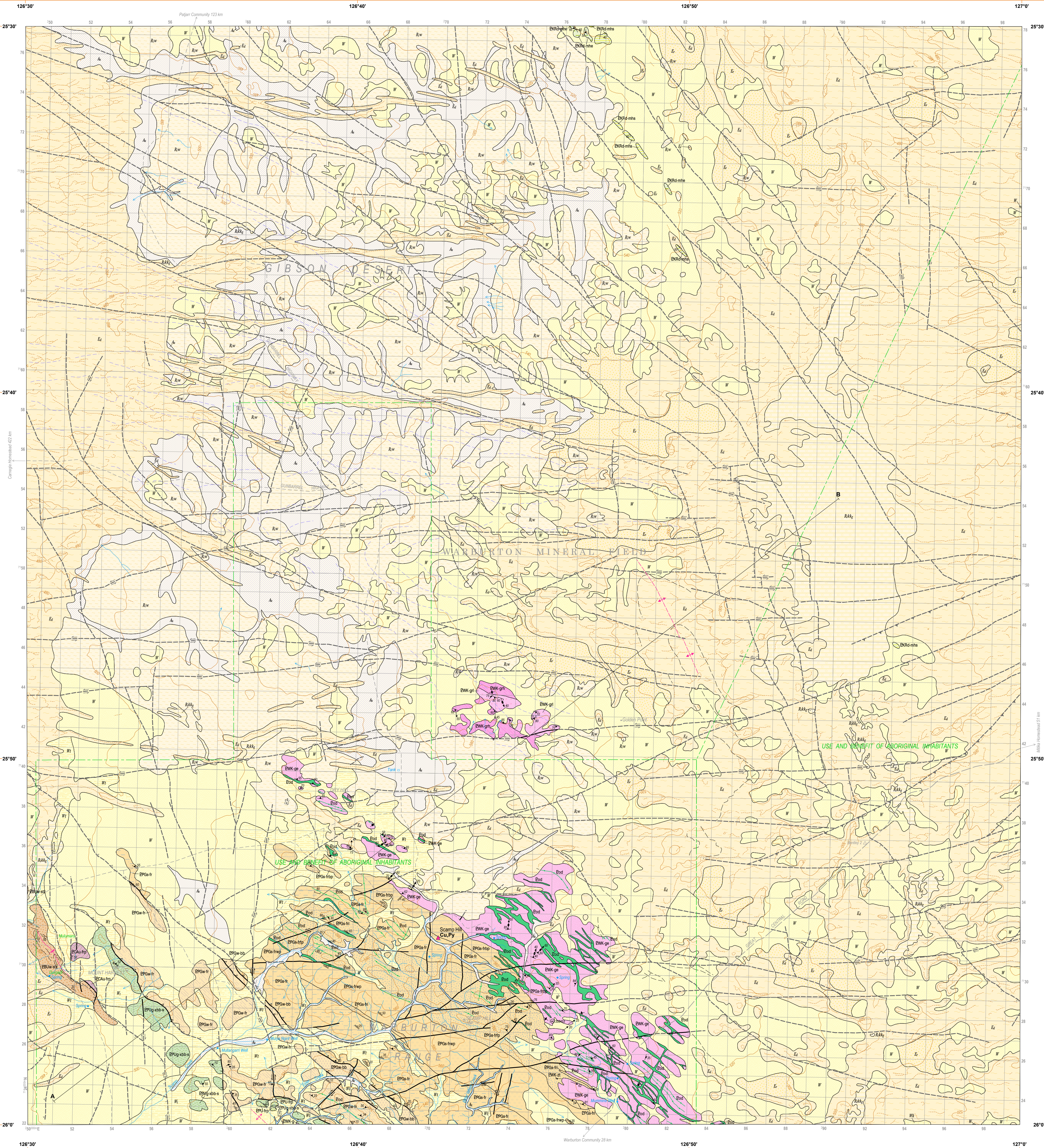


GOLDEN POINT
GEOLOGICAL SURVEY OF WESTERN AUSTRALIA

AUSTRALIA 1 : 100 000 GEOLOGICAL SERIES

SHEET 4246



Compiled by R. Quentin de Cromard, HM Howard, and RH Smithies 2015
Geology by R. Quentin de Cromard, HM Howard, and RH Smithies 2015
Geological Survey of Western Australia
Department of Mines and Petroleum
100 Park Street
East Perth, Western Australia 6004
Phone: +61 8 9222 3444
Fax: +61 8 9222 3444
Email: geology@dmpr.wa.gov.au
Website: www.dmp.wa.gov.au
The recommended reference for this map is:
Quentin de Cromard, R. Howard, HM Howard, and RH Smithies, 2015, Golden Point, WA Sheet 4246, Geological Survey of Western Australia, 1:100 000 Geological Series.

Theme
Geology
Mineral sites
Structural data
Horizontal control
Topographic nomenclature
Topography
Contours

Data Currency
2015
March 2015
March 2015
March 2015
2015
2015
2010

Organization
Geological Survey of Western Australia, Department of Mines and Petroleum
Geological Survey of Western Australia, Department of Mines and Petroleum
Geological Survey of Western Australia, Department of Mines and Petroleum
Geological Survey of Western Australia, Department of Mines and Petroleum
Geological Survey of Western Australia, Department of Mines and Petroleum
Geological Survey of Western Australia, Department of Mines and Petroleum
Geological Survey of Western Australia, Department of Mines and Petroleum

