

- SYMBOLS**
- Mineral exploration drillhole
 - GSWA exploratory water bore
 - Water Authority water bore
- PETROLEUM EXPLORATION WELLS**
- Dry, plugged and abandoned
 - Show of gas, plugged and abandoned
 - Show of oil, suspended
 - Show of oil, plugged and abandoned
 - Show of oil and gas, plugged and abandoned

- PETROLEUM PRODUCTION WELLS**
- Oil
 - Gas
 - Oil and gas
 - Gas and condensate
 - Oil, suspended
 - Gas, suspended
 - Oil and gas, suspended
 - Gas and condensate, suspended
 - Oil, abandoned
 - Gas, abandoned

- Stratigraphic well
- Oil- and gasfield outlines
- Coastline
- Townsite



INDEX MAP

114°50'	115°00'	115°10'	115°20'	115°30'	115°40'	115°50'	116°00'
29°00'	29°10'	29°20'	29°30'	29°40'	29°50'	30°00'	30°10'
30°20'	30°30'	30°40'	30°50'	31°00'	31°10'	31°20'	31°30'
31°40'	31°50'	32°00'	32°10'	32°20'	32°30'	32°40'	32°50'



DEPARTMENT OF MINERALS AND ENERGY
K.R. PERRY, DIRECTOR GENERAL

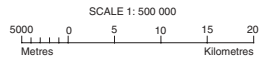
GEOLOGICAL SURVEY OF WESTERN AUSTRALIA
PIETRO GALLI, DIRECTOR

GEOLOGICAL SURVEY OF WESTERN AUSTRALIA
REPORT 46 PLATE 1

**PETROLEUM WELLS,
DEEP BORES AND
DRILLHOLES**

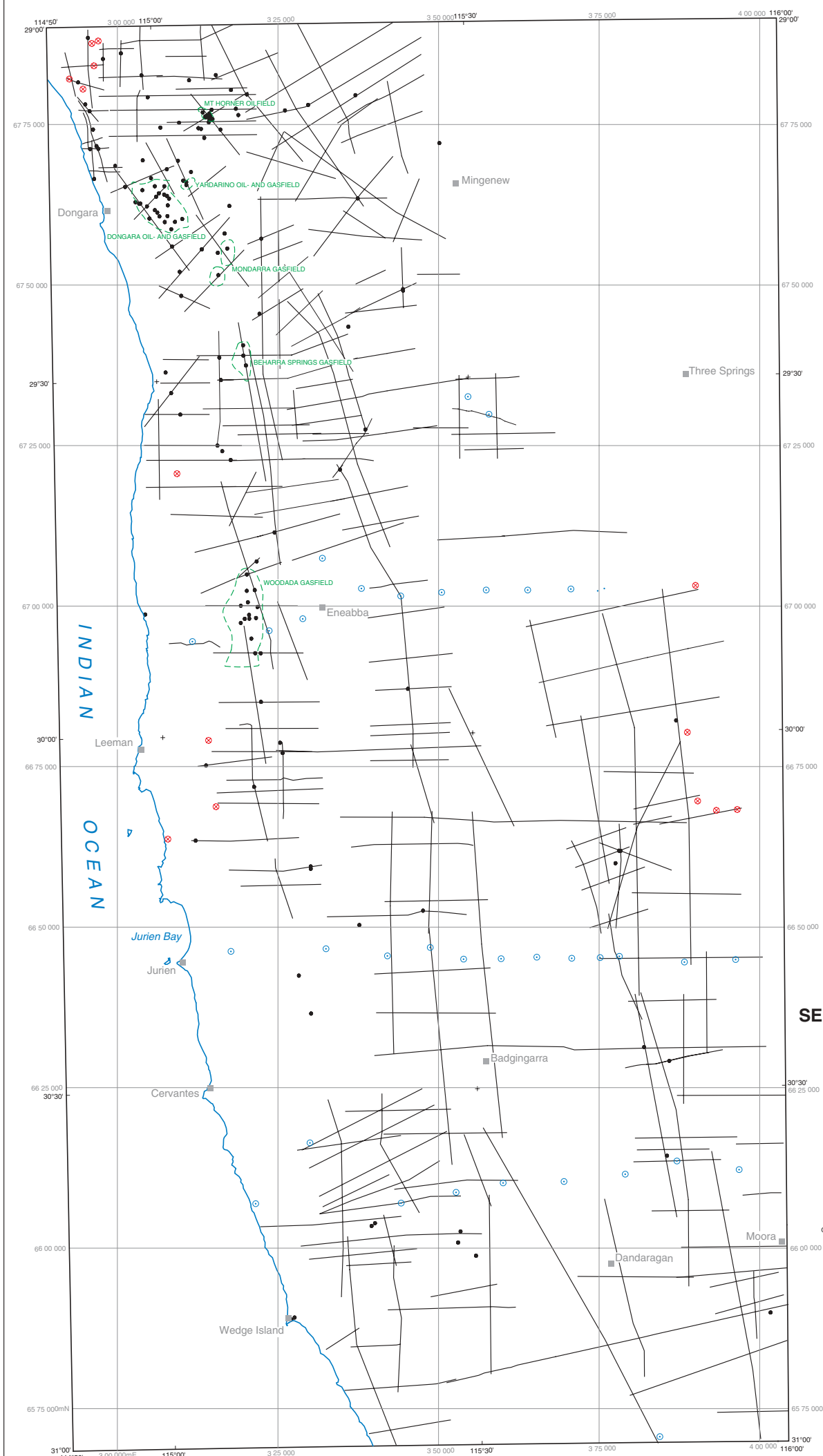
**ONSHORE NORTHERN
PERTH BASIN**

Status of wells current at 31.12.94



TRANSVERSE MERCATOR PROJECTION
Grid lines indicate 25 000 metre interval of the Australian Map Grid Zone 50

Compilation of well data by A.J. Mori
Edited by S. Willis, D. Ferdinando and G. Loan
Cartography by T. Lenane and L. Cosgrove
Published by the Geological Survey of Western Australia. Copies available from the Mining Information Centre, Department of Minerals and Energy, 100 Plain Street, East Perth, W.A. 6004. Phone (09) 222 3459, Fax (09) 222 3444
This map is also available in digital form
Printed by Allwest Print, Western Australia
The recommended reference for this map is: MORY, A.J., and IASKY, R.P., 1996, Petroleum wells, deep bores and drillholes, onshore northern Perth Basin: Western Australia Geological Survey, Report 46, Plate 1

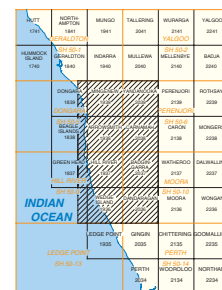


SYMBOLS

- Seismic line
- Petroleum well
- ⊗ Mineral exploration drillhole
- ⊙ GSWA exploratory water bore
- Water Authority water bore
- Coastline
- Townsite
- Oil- and gasfield outlines



INDEX MAP



GOVERNMENT OF WESTERN AUSTRALIA
HON. KEVIN MINSON M.L.A.
MINISTER FOR MINES



DEPARTMENT OF MINERALS AND ENERGY
K.R. PERRY, DIRECTOR GENERAL

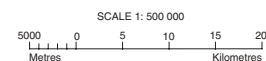


GEOLOGICAL SURVEY OF WESTERN AUSTRALIA
PIETRO GIU, DIRECTOR

GEOLOGICAL SURVEY OF WESTERN AUSTRALIA
REPORT 46 PLATE 2

SEISMIC LINE LOCATION MAP

ONSHORE NORTHERN PERTH BASIN

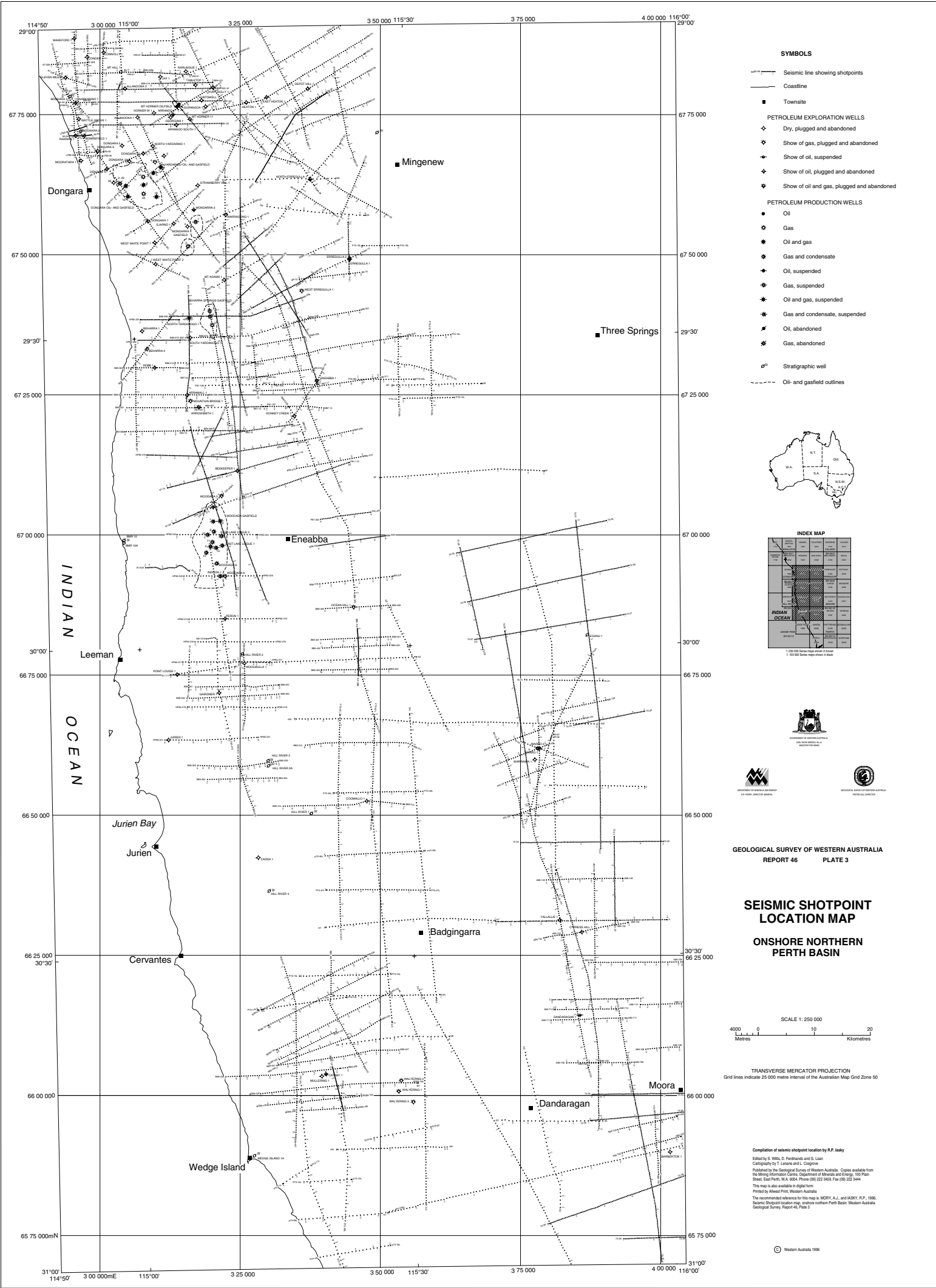


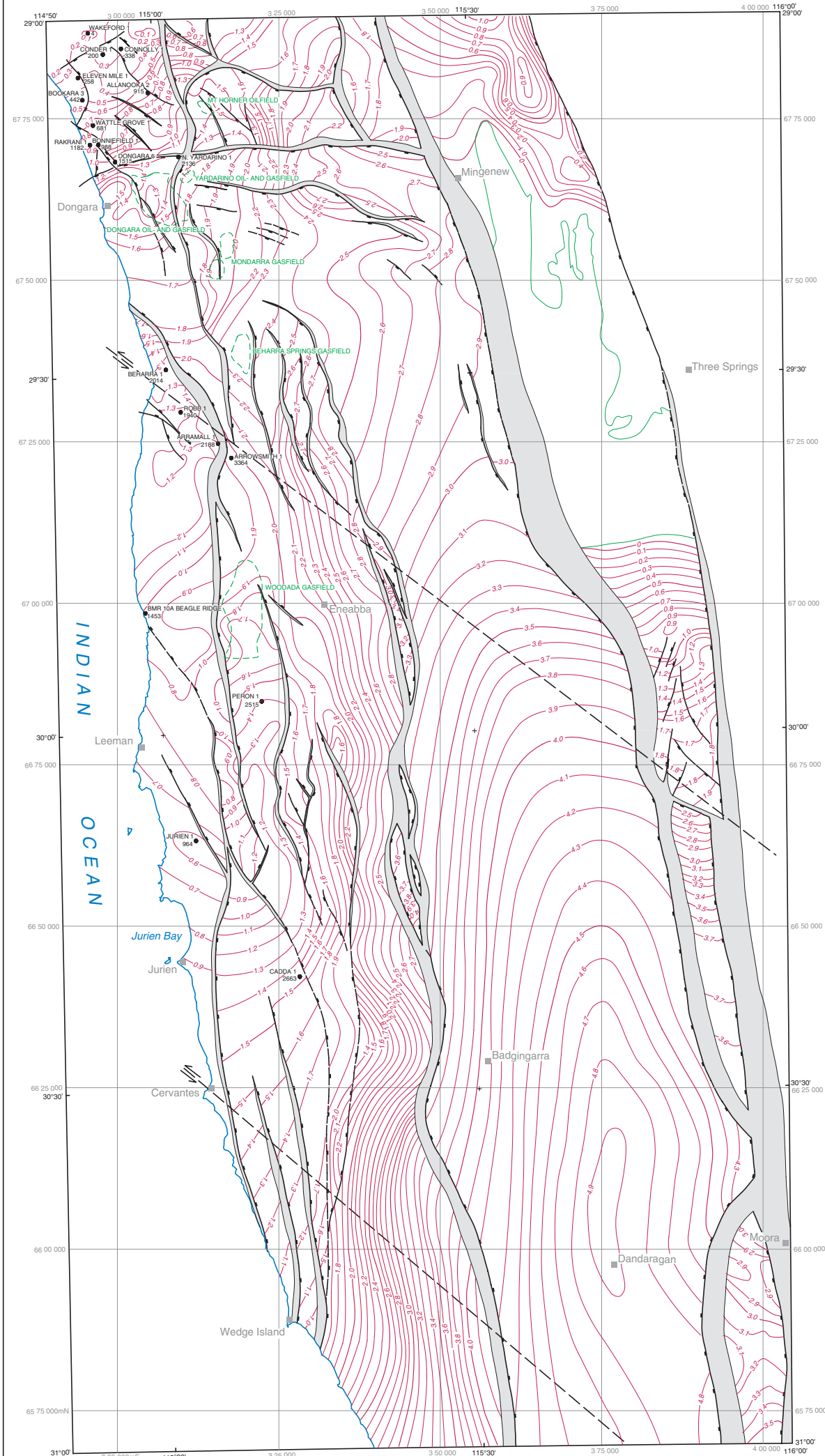
TRANSVERSE MERCATOR PROJECTION
Grid lines indicate 25 000 metre interval of the Australian Map Grid Zone 50

Compilation of seismic lines and selected wells by
R.P. Iasky, and A.J. Mory

Edited by S. Willis, D. Ferdinando and G. Loan
Cartography by T. Lenehan and L. Cosgrove
Published by the Geological Survey of Western Australia,
Copies available from the Mining Information Centre,
Department of Minerals and Energy, 100 Plain Street,
East Perth, W.A. 6004. Phone (09) 222 3459, Fax (09) 222 3444
This map is also available in digital form
Printed by Allwest Print, Western Australia
The recommended reference for this map is:
MORY, A.J., and IASKY, R.P., 1996. Seismic line location map,
northern onshore Perth Basin.
Western Australia Geological Survey, Report 46, Plate 2

© Western Australia 1996





SYMBOLS

- Two-way time contours, in seconds, contour interval 100 milliseconds
- Fault: showing downthrown side and heave, inferred. Tick on downthrown side
- Transfer fault
- Pre-Quaternary "surface" intersection Top basement
- Petroleum well location; showing depth to basement in metres subsea
- Coastline
- Townsite
- Oil- and gasfield outlines



INDEX MAP

114°00' 114°30' 115°00' 115°30' 116°00'	29°00' 29°30' 30°00' 30°30' 31°00'
114°00' 114°30' 115°00' 115°30' 116°00'	29°00' 29°30' 30°00' 30°30' 31°00'

1: 250 000 Series maps shown in brown
1: 100 000 Series maps shown in black

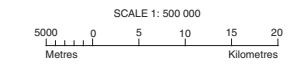
GOVERNMENT OF WESTERN AUSTRALIA
HON. KEVIN MINSON, M.L.A.
MINISTER FOR MINES

DEPARTMENT OF MINERALS AND ENERGY
K.R. PERRY, DIRECTOR GENERAL

GEOLOGICAL SURVEY OF WESTERN AUSTRALIA
PIETRO GALL, DIRECTOR

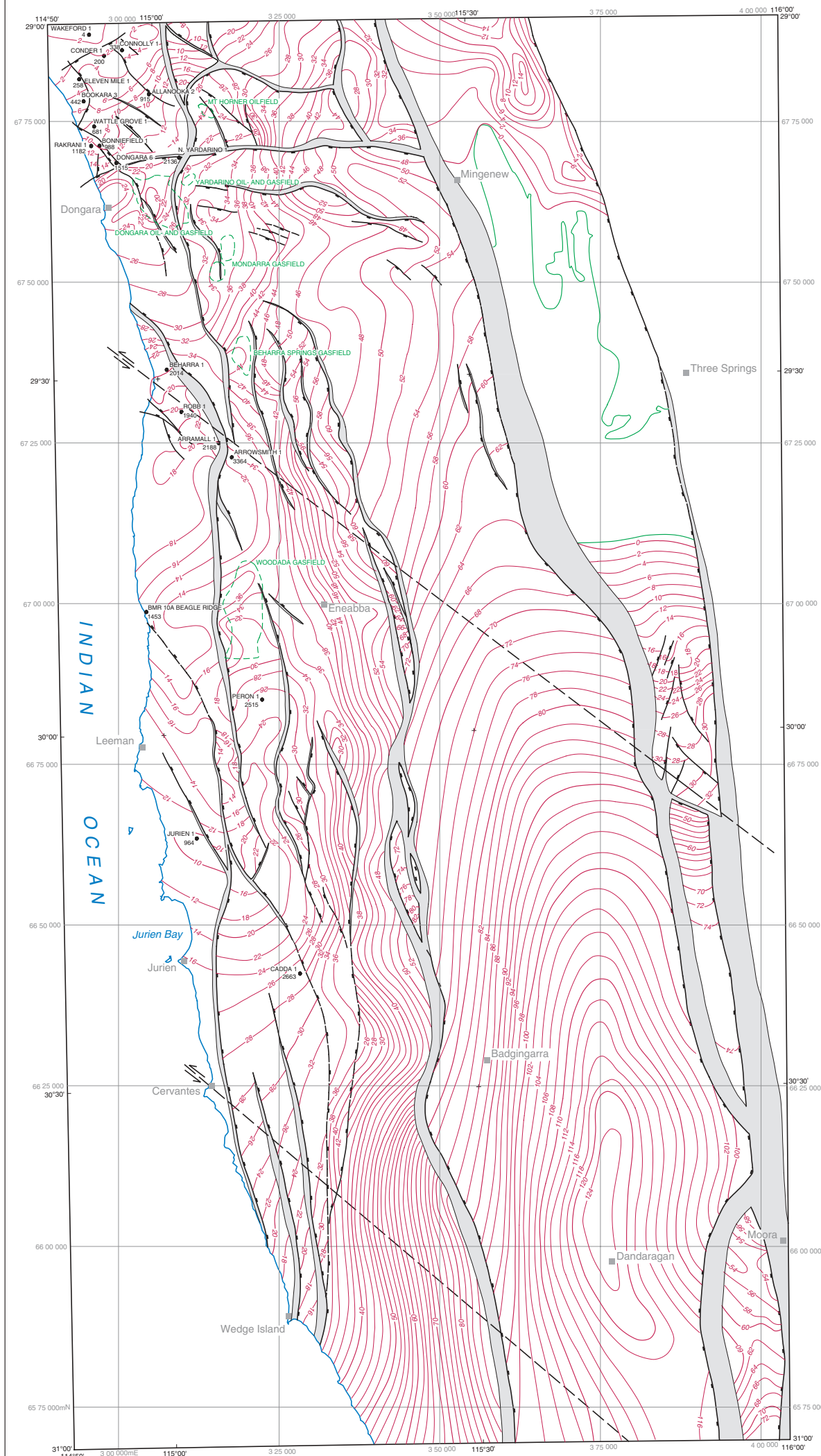
GEOLOGICAL SURVEY OF WESTERN AUSTRALIA
REPORT 46 PLATE 4

**TOP BASEMENT
TWO-WAY TIME
STRUCTURE MAP
ONSHORE NORTHERN
PERTH BASIN**



TRANSVERSE MERCATOR PROJECTION
Grid lines indicate 25 000 metre interval of the Australian Map Grid Zone 50

Seismic and gravity interpretation by R.P. Isky
Geology by A.J. Mory
Edited by S. Willis, D. Ferdinando and G. Loan
Cartography by T. Lenane and L. Cosgrove
Published by the Geological Survey of Western Australia. Copies available from the Mining Information Centre, Department of Minerals and Energy, 100 Plain Street, East Perth, W.A. 6004. Phone (09) 222 3459, Fax (09) 222 3444
This map is also available in digital form
Printed by Alweld Print, Western Australia
The recommended reference for this map is: MORY, A.J., and ISKY, R.P., 1996. Top basement two-way time structure map, onshore northern Perth Basin: Western Australia Geological Survey, Report 46, Plate 4

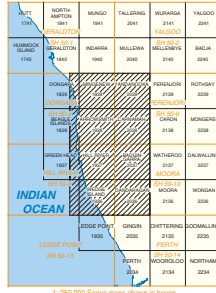


SYMBOLS

- Depth contours, in hundred metres subsea, contour interval 200 metres
- Fault: showing downthrown side and heave, inferred. Tick on downthrown side
- Transfer fault
- Pre-Quaternary 'surface' intersection
- Top basement
- Petroleum well: showing depth to basement in metres subsea
- Coastline
- Townsite
- Oil- and gasfield outlines



INDEX MAP



GOVERNMENT OF WESTERN AUSTRALIA
HON. KEVIN MANSON, M.L.A.
MINISTER FOR MINES



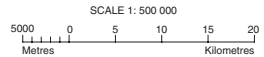
DEPARTMENT OF MINERALS AND ENERGY
K.R. PERRY, DIRECTOR GENERAL



GEOLOGICAL SURVEY OF WESTERN AUSTRALIA
PETRO GLU, DIRECTOR

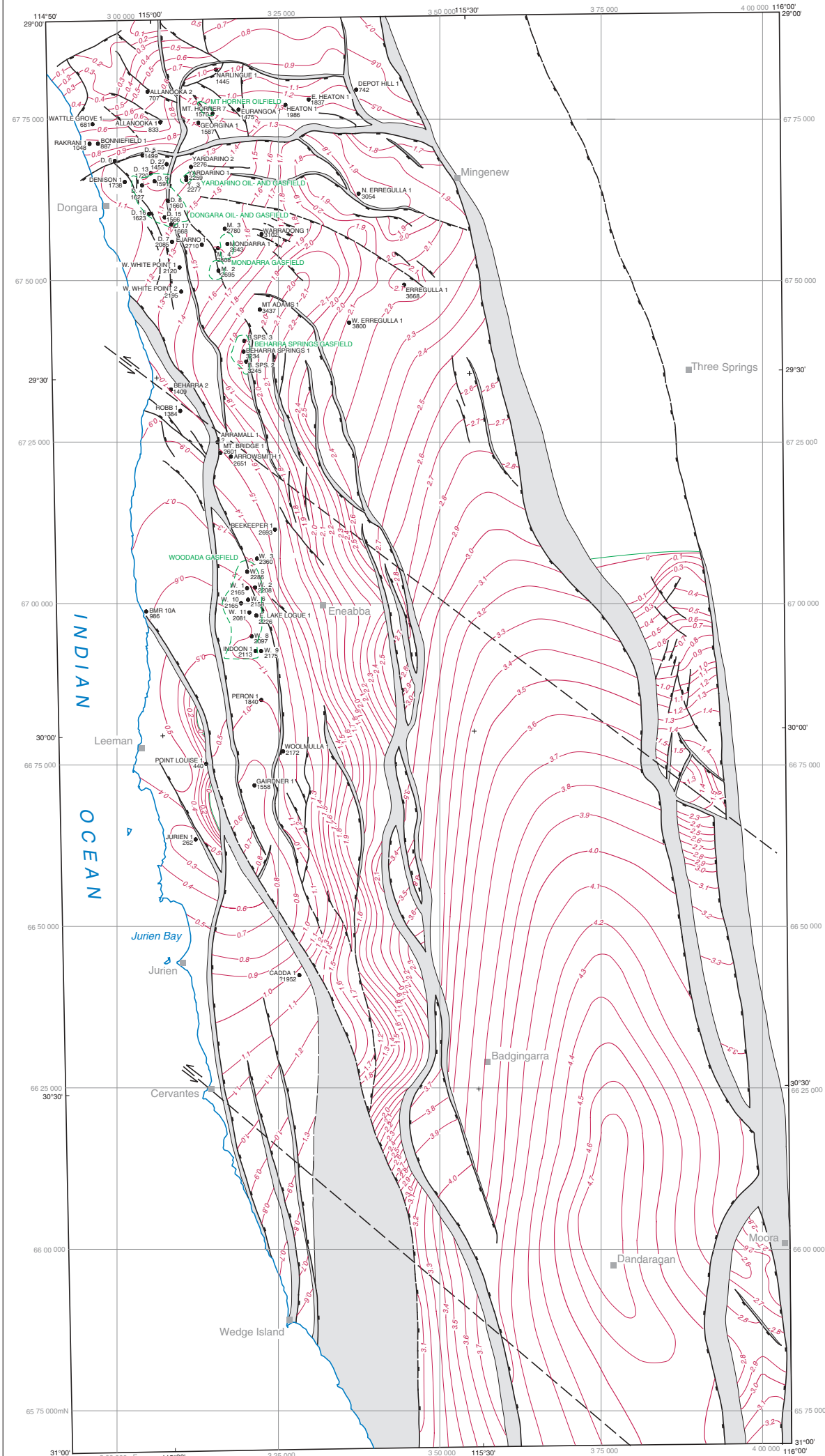
GEOLOGICAL SURVEY OF WESTERN AUSTRALIA
REPORT 46 PLATE 5

TOP BASEMENT DEPTH
STRUCTURE MAP
ONSHORE NORTHERN
PERTH BASIN



TRANSVERSE MERCATOR PROJECTION
Grid lines indicate 25 000 metre interval of the Australian Map Grid Zone 50

Seismic and gravity interpretation by R.P. Iasky
Geology by A.J. Morry
Edited by S. Willis, D. Ferdinando and G. Loan
Cartography by T. Lenane and L. Cosgrove
Published by the Geological Survey of Western Australia.
Copies available from the Mining Information Centre,
Department of Minerals and Energy, 100 Plain Street,
East Perth, W.A. 6004. Phone (08) 222 3459, Fax (08) 222 3444
This map is also available in digital form
Printed by Allwood Print, Western Australia
The recommended reference for this map is:
MORRY, A.J., and IASKY, R.P., 1996, Top basement depth
structure map, onshore northern Perth Basin
Western Australia Geological Survey, Report 46, Plate 5

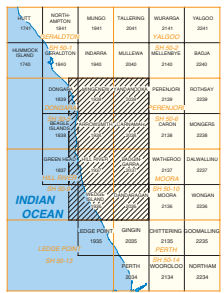


SYMBOLS

- Two way time contours, in seconds, contour interval 100 milliseconds
- Fault; showing downthrown side and heave, inferred. Tick on downthrown side
- Transfer fault
- Pre-Quaternary "surface" intersection Top Permian
- Petroleum well; showing depth to Top Permian in metres subsea
- D. 17 Dongara Field wells
- W. 2 Woodada Field wells
- Coastline
- Townsite
- Oil- and gasfield outlines



INDEX MAP



HON. KEVIN MINSON, M.L.A.
MINISTER FOR MINES



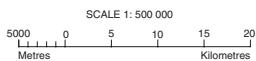
DEPARTMENT OF MINERALS AND ENERGY
K.R. PERRY, DIRECTOR GENERAL



GEOLOGICAL SURVEY OF WESTERN AUSTRALIA
PIETRO GILL, DIRECTOR

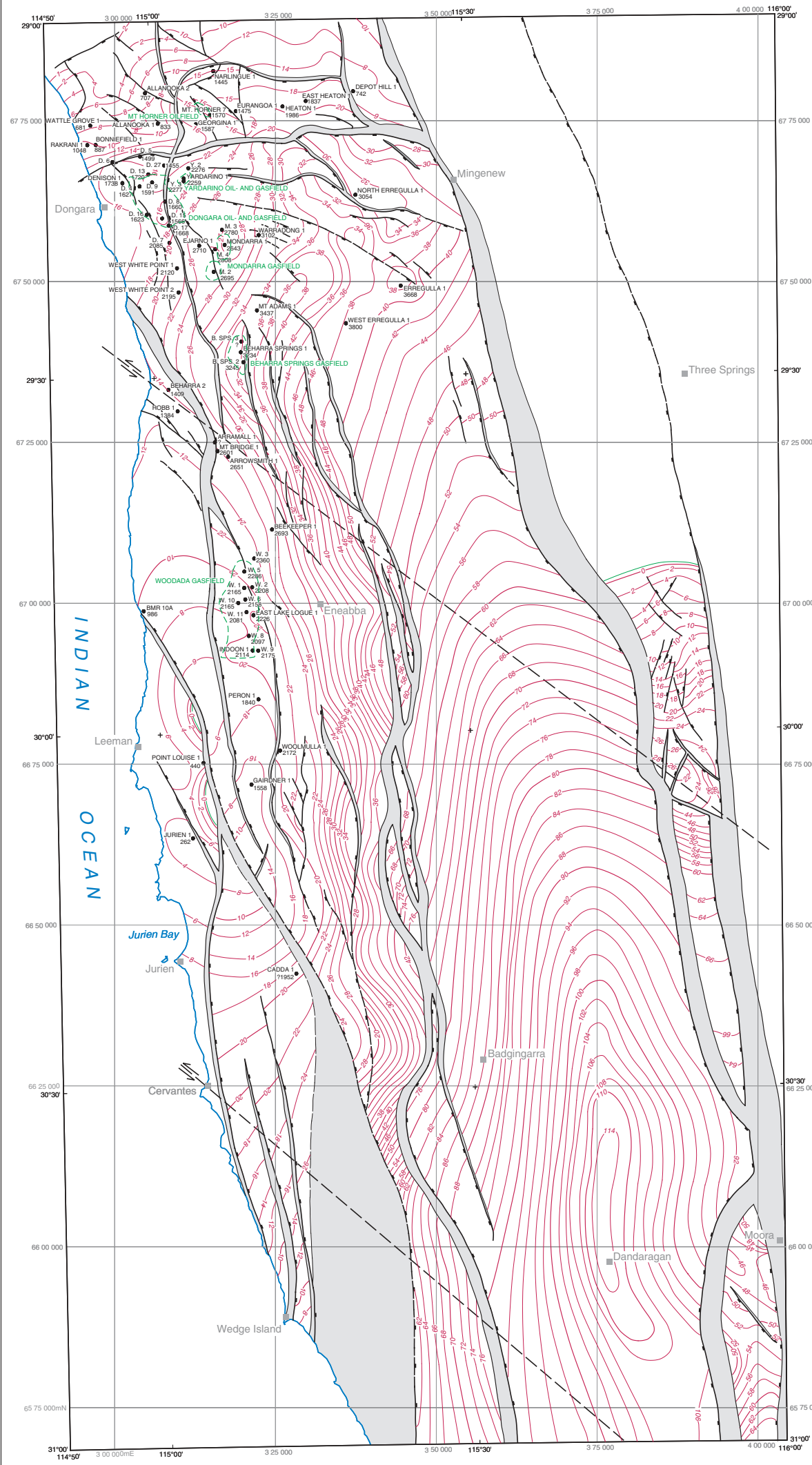
GEOLOGICAL SURVEY OF WESTERN AUSTRALIA
REPORT 46 PLATE 6

TOP PERMIAN
TWO-WAY TIME
STRUCTURE MAP
ONSHORE NORTHERN
PERTH BASIN



TRANSVERSE MERCATOR PROJECTION
Grid lines indicate 25 000 metre interval of the Australian Map Grid Zone 50

Seismic and gravity interpretation by R.P. Isky
Geology by A.J. Morry
Edited by S. Willis, D. Ferdinando and G. Loan
Cartography by T. Lenane and L. Cosgrove
Published by the Geological Survey of Western Australia. Copies available from the Mining Information Centre, Department of Minerals and Energy, 100 Plain Street, East Perth, W.A. 6004. Phone (09) 222 3459. Fax (09) 222 3444
This map is also available in digital form
Printed by Allprint Print, Western Australia
The recommended reference for this map is: MORRY, A.J., and ISKY, R.P., 1996, Top Permian, two way time structure map, onshore northern Perth Basin: Western Australia Geological Survey, Report 46, Plate 6



SYMBOLS

Depth contours, in hundred metres subsea, contour interval 200 metres

Fault: showing downthrown side and heave, inferred. Tick on downthrown side

Transfer fault

Pre-Quaternary "surface" intersection

Top Permian

Petroleum well: showing depth to top Permian in metres subsea

D. 17 Dongara Field wells

W. 17 Woodada Field wells

Coastline

Townsite

Oil- and gasfield outlines

INDEX MAP

1:250 000 Series maps shown in brown	1:100 000 Series maps shown in black
--------------------------------------	--------------------------------------

GOVERNMENT OF WESTERN AUSTRALIA
HON. KEVIN MINSON, M.L.A.
MINISTER FOR MINES

DEPARTMENT OF MINERALS AND ENERGY
K.R. PERRY, DIRECTOR GENERAL

GEOLOGICAL SURVEY OF WESTERN AUSTRALIA
PETRO GILL, DIRECTOR

GEOLOGICAL SURVEY OF WESTERN AUSTRALIA
REPORT 46 PLATE 7

**TOP PERMIAN DEPTH
STRUCTURE MAP**
**ONSHORE NORTHERN
PERTH BASIN**

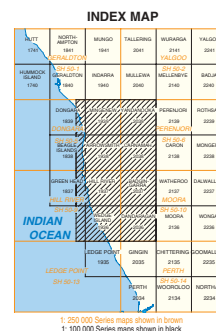
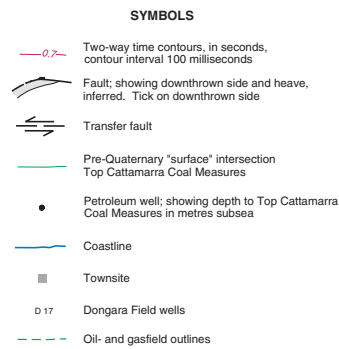
SCALE 1: 500 000

5000 0 5 10 15 20
Metres Kilometres

TRANSVERSE MERCATOR PROJECTION
Grid lines indicate 25 000 metre interval of the Australian Map Grid Zone 50

Seismic and gravity interpretation by R.P. Isky
Geology by A.J. Morry
Edited by S. Willis, D. Ferdinando and G. Loan
Cartography by T. Lenane and L. Cosgrove
Published by the Geological Survey of Western Australia. Copies available from the Mining Information Centre, Department of Minerals and Energy, 100 Plain Street, East Perth, W.A. 6004. Phone (09) 222 3459, Fax (09) 222 3444.
This map is also available in digital form.
Printed by Alhwest Print, Western Australia.
The recommended reference for this map is: MORRY, A.J., and ISKY, R.P., 1996. Top Permian depth structure map, onshore northern Perth Basin: Western Australia Geological Survey, Report 46, Plate 7.

© Western Australia 1996



HON. KEVIN MINSON, M.L.A.
MINISTER FOR MINES



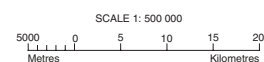
DEPARTMENT OF MINERALS AND ENERGY
K. B. PERRY, DIRECTOR GENERAL



GEOLOGICAL SURVEY OF WESTERN AUSTRALIA
PIETRO GILL, DIRECTOR

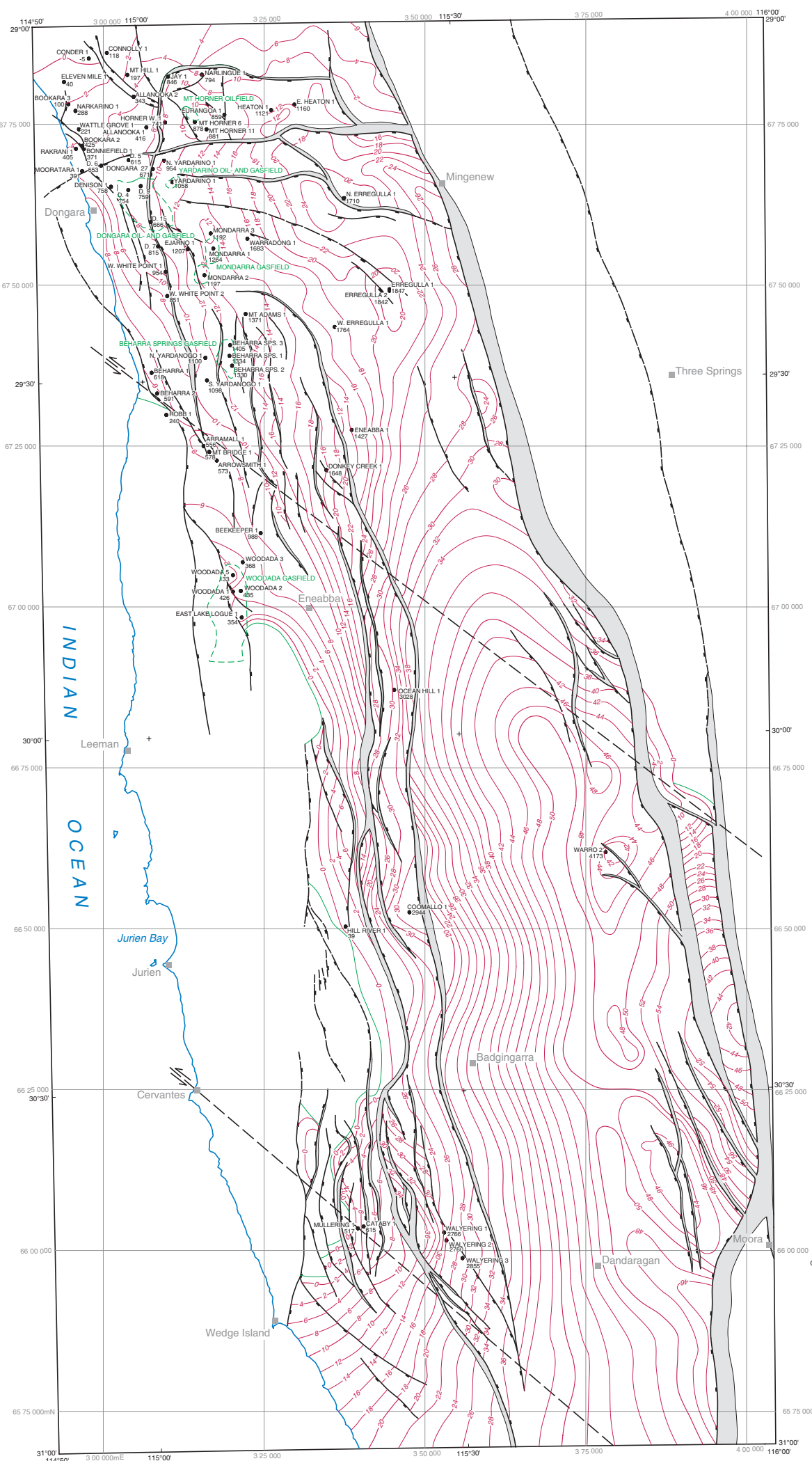
GEOLOGICAL SURVEY OF WESTERN AUSTRALIA
REPORT 46 PLATE 8

**TOP CATTAMARRA
COAL MEASURES
TWO-WAY TIME
STRUCTURE MAP
ONSHORE NORTHERN
PERTH BASIN**



TRANSVERSE MERCATOR PROJECTION
Grid lines indicate 25 000 metre interval of the Australian Map Grid Zone 50

Seismic and gravity interpretation by R.P. Iasky
Geology by A.J. Mory
 Edited by S. Willis, D. Ferdinando and G. Loan
 Cartography by T. Lenane and L. Cosgrove
 Published by the Geological Survey of Western Australia. Copies available from the Mining Information Centre, Department of Minerals and Energy, 100 Plain Street, East Perth, W.A. 6004. Phone (09) 222 3459, Fax (09) 222 3444
 This map is also available in digital form
 Printed by Allwest Print, Western Australia
 The recommended reference for this map is: MORY, A.J., and IASKY, R.P., 1996, Topographic and geophysical maps of the Perth region, 1:250,000 scale, 1:250,000 scale. Topographic and geophysical maps, two-way time structure map, onshore northern Perth Basin, Western Australia (Geological Survey, Report 46, 1996).

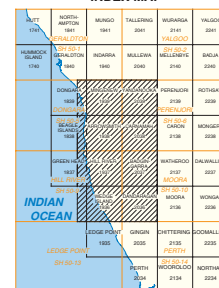


SYMBOLS

- Depth contours, in hundred metres subsea, contour interval 200 metres
- Fault; showing downthrown side and heave, inferred. Tick on downthrown side
- Transfer fault
- Pre-Quaternary 'surface' intersection
- Petroleum well; showing depth to Top Cattamarra Coal Measures in metres subsea
- Coastline
- Townsite
- D 17 Dongara Field wells
- Oil- and gasfield outlines



INDEX MAP



1: 250 000 Series maps shown in brown
1: 100 000 Series maps shown in black



GOVERNMENT OF WESTERN AUSTRALIA
HON. KEVIN MINSON, M.L.A.
MINISTER FOR MINES



DEPARTMENT OF MINERALS AND ENERGY
K.R. PERRY, DIRECTOR GENERAL



GEOLOGICAL SURVEY OF WESTERN AUSTRALIA
PIETRO GILL, DIRECTOR

GEOLOGICAL SURVEY OF WESTERN AUSTRALIA
REPORT 46 PLATE 9

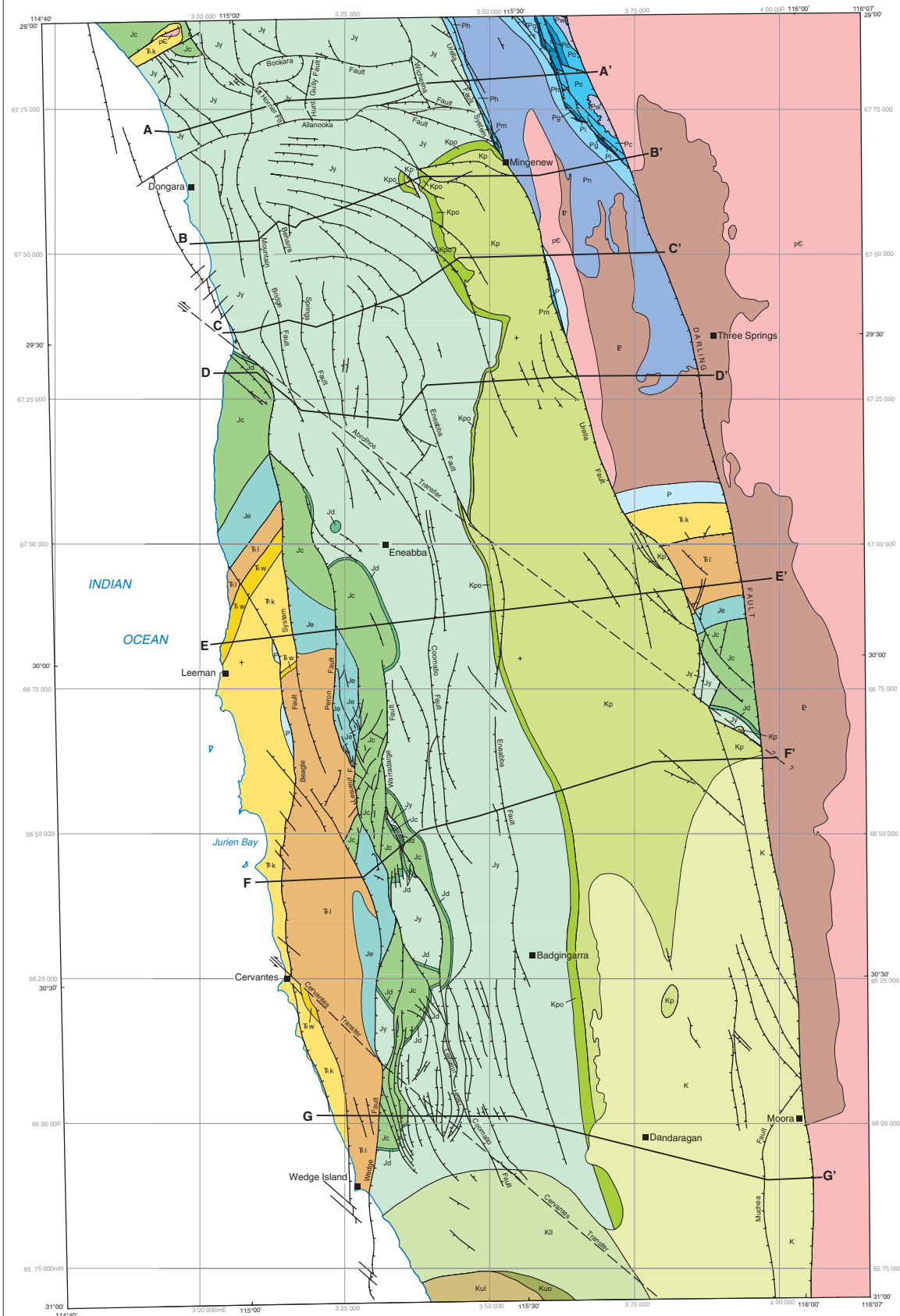
TOP CATTAMARRA COAL MEASURES DEPTH STRUCTURE MAP ONSHORE NORTHERN PERTH BASIN

SCALE 1: 500 000
5000 0 10 15 20
Metres Kilometres

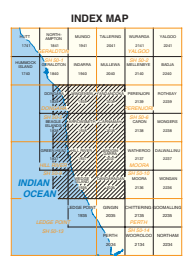
TRANSVERSE MERCATOR PROJECTION
Grid lines indicate 25 000 metre interval of the Australian Map Grid Zone 50

Seismic and gravity interpretation by R.P. Isky
Geology by A.J. Mory
Edited by S. Willis, D. Ferdinands and G. Loan
Cartography by T. Linnane and L. Cosgrove
Published by the Geological Survey of Western Australia. Copies available from the Mining Information Centre, Department of Minerals and Energy, 100 Plain Street, East Perth, W.A. 6004. Phone (09) 222 3459, Fax (09) 222 3444
This map is also available in digital form
Printed by Allwest Print, Western Australia
The recommended reference for this map is: MORY, A.J., and ISKY, R.P., 1996, Top Cattamarra Coal Measures, depth structure map, onshore northern Perth Basin: Western Australia Geological Survey, Report 46, Plate 9

© Western Australia 1996



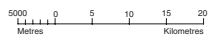
REFERENCE	SYMBOLS
CRETACEOUS	Geological boundary
K Undifferentiated Cretaceous	Fault, showing downthrown side
Kul Lancelin Formation	Transfer fault
Kuo Osborne Formation	Coastline
Kil Leederville Formation	Townsite
JURASSIC	Line of sections (Sections are shown on Plate 11)
Kp Permian Formation	
Jy Yarragadee Formation	
Jd Cadda Formation	
Jc Cattamarra Coal Measures	
Je Eneabba Formation	
TRIASSIC	
Ti Lesueur Sandstone	
Tw Woodada Formation	
Tk Kookatea Shale	
PERMIAN	
P Undifferentiated Permian	
Pw Wagina Sandstone	
PRECAMBRIAN	
Kpo Mingenew and Caringinia Formations	
Kp Irwin River Coal Measures	
Ph High Cliff Sandstone	
Ph Holmwood Shale	
Ph Nangetty Formation	
E Moora and Yandavook Groups	
pC Undifferentiated basement rocks	



GEOLOGICAL SURVEY OF WESTERN AUSTRALIA
REPORT 46 PLATE 10

PRE-CAINOZOIC GEOLOGY

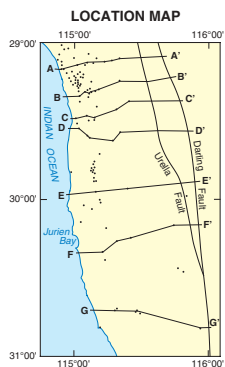
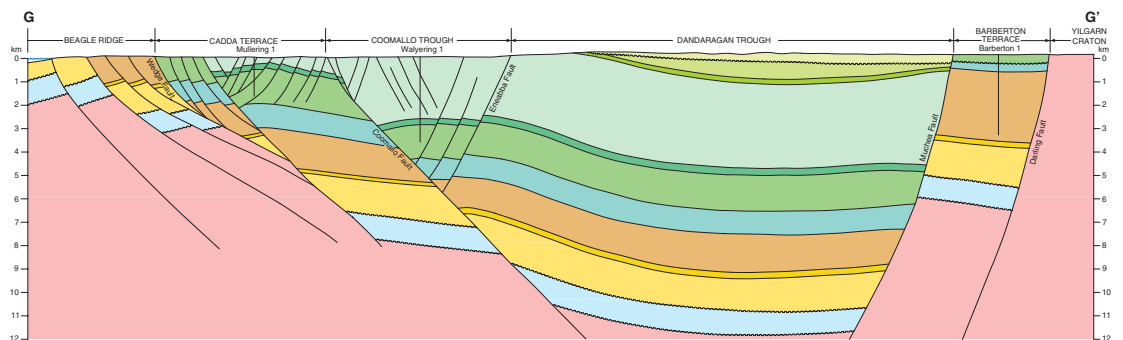
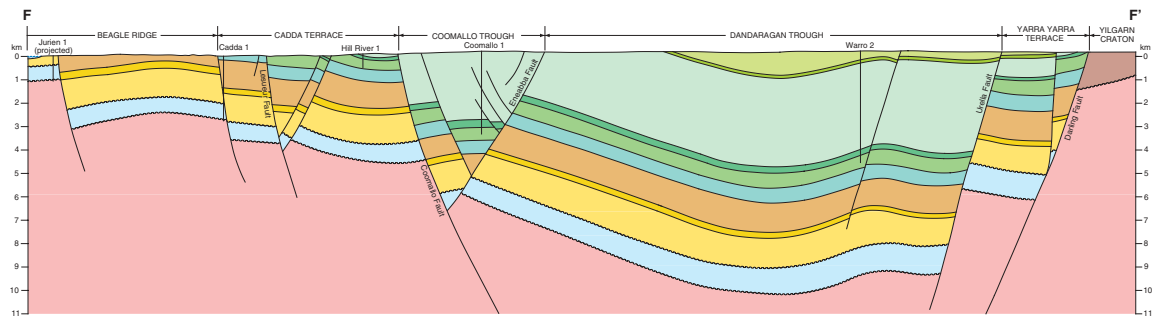
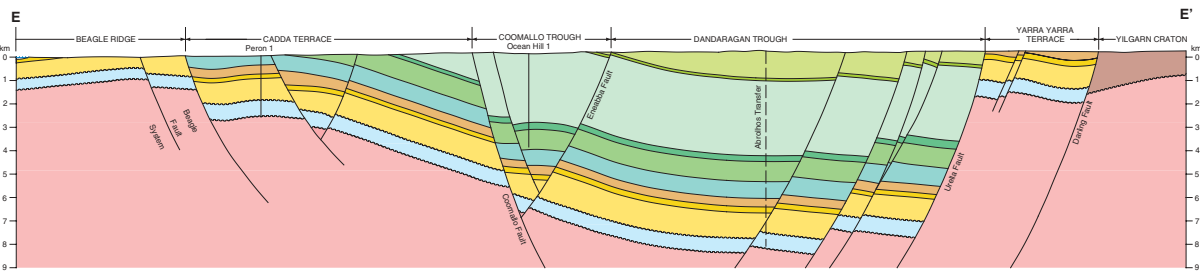
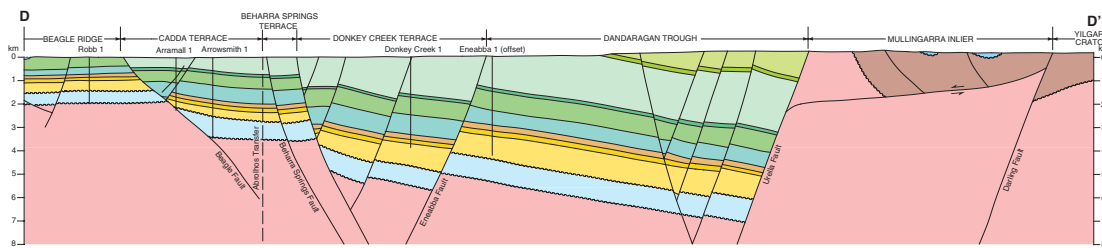
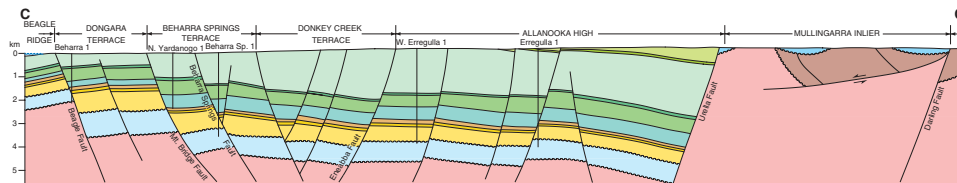
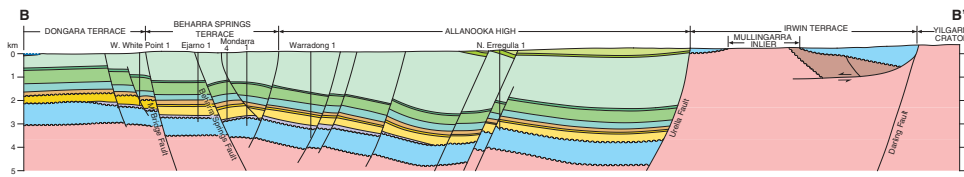
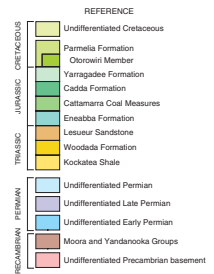
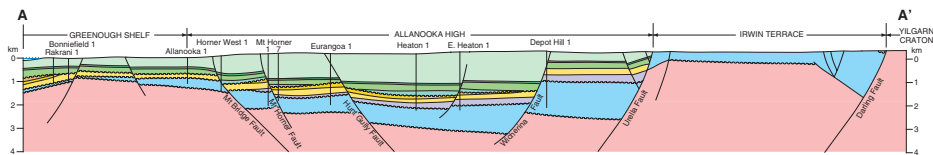
ONSHORE NORTHERN PERTH BASIN



TRANSVERSE MERCATOR PROJECTION
Grid lines indicate 25 000 metre interval of the Australian Map Grid Zone 50

Geology by A.J. Morry
Seismic and gravity interpretation by R.P. Isky
Edited by S. Wells, D. Ferdinando and G. Loan
Cartography by T. Leman and S. Downett
Published by the Geological Survey of Western Australia
Copies available from the Mining Information Centre,
Department of Minerals and Energy, 100 Perth Street,
East Perth, W.A. 6004. Phone (08) 222 3468, Fax (08) 222 3444
This map is also available in digital form
Printed by Alured Print, Western Australia
The recommended reference for this map is:
MORRY, A.J., and ISKY, R.P., 1996, Pre-Cainozoic
geology, onshore northern Perth Basin,
Western Australia Geological Survey, Report 46, Plate 10

© Western Australia 1996



SCALE 1:250 000

5000 0 5 10

Metres Kilometres

GEOLOGICAL SURVEY OF WESTERN AUSTRALIA
REPORT 46 PLATE 11

EAST-WEST GEOLOGICAL SECTIONS **ONSHORE NORTHERN PERTH BASIN**

V_H-2 Depth shown below mean sea level

Geology by A.J. Mori
Seismic and gravity interpretation by R.P. Isely
Edited by S. Wells, C. Ferdinando and G. Loan
Copyright by G. Conwell
Published by the Geological Survey of Western Australia.
Copies available from the Mining Information Centre,
Department of Mines and Energy, 100 Plain Street,
East Perth, W.A. 6004. Phone (08) 222 5410. Fax (08) 222 3444
These sections are also available in digital form.
Printed by Alinari Print, Western Australia
The recommended reference for this data is:
MORI, A.J. and ISELY, R.P., 1995. East-west geological
sections, onshore northern Perth Basin.
Western Australia Geological Survey, Report 46, Plate 11

W

Rakrani 1

Bonniefield 1

Allanooka 1

Horner West 1

Mount Horner 1

Mount Horner 7

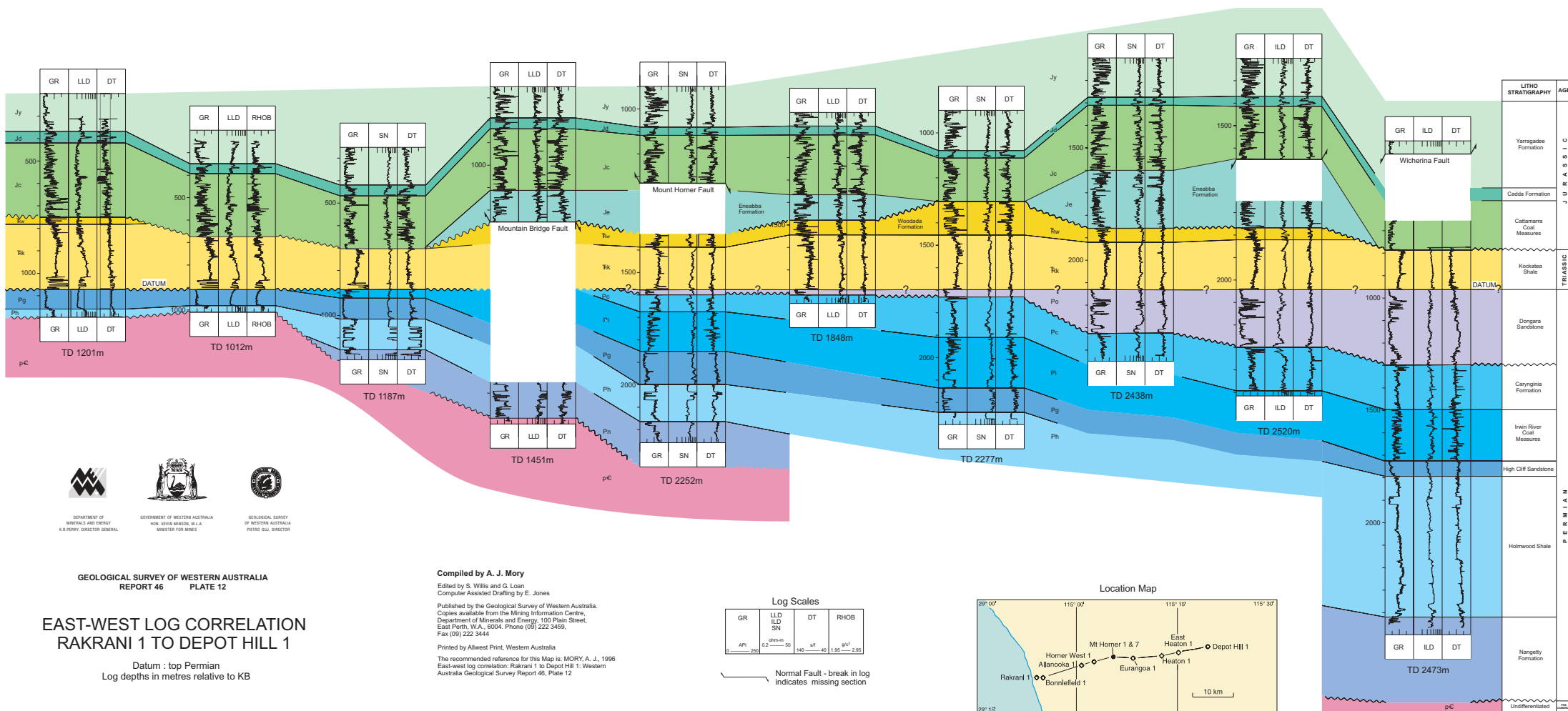
Eurangoa 1

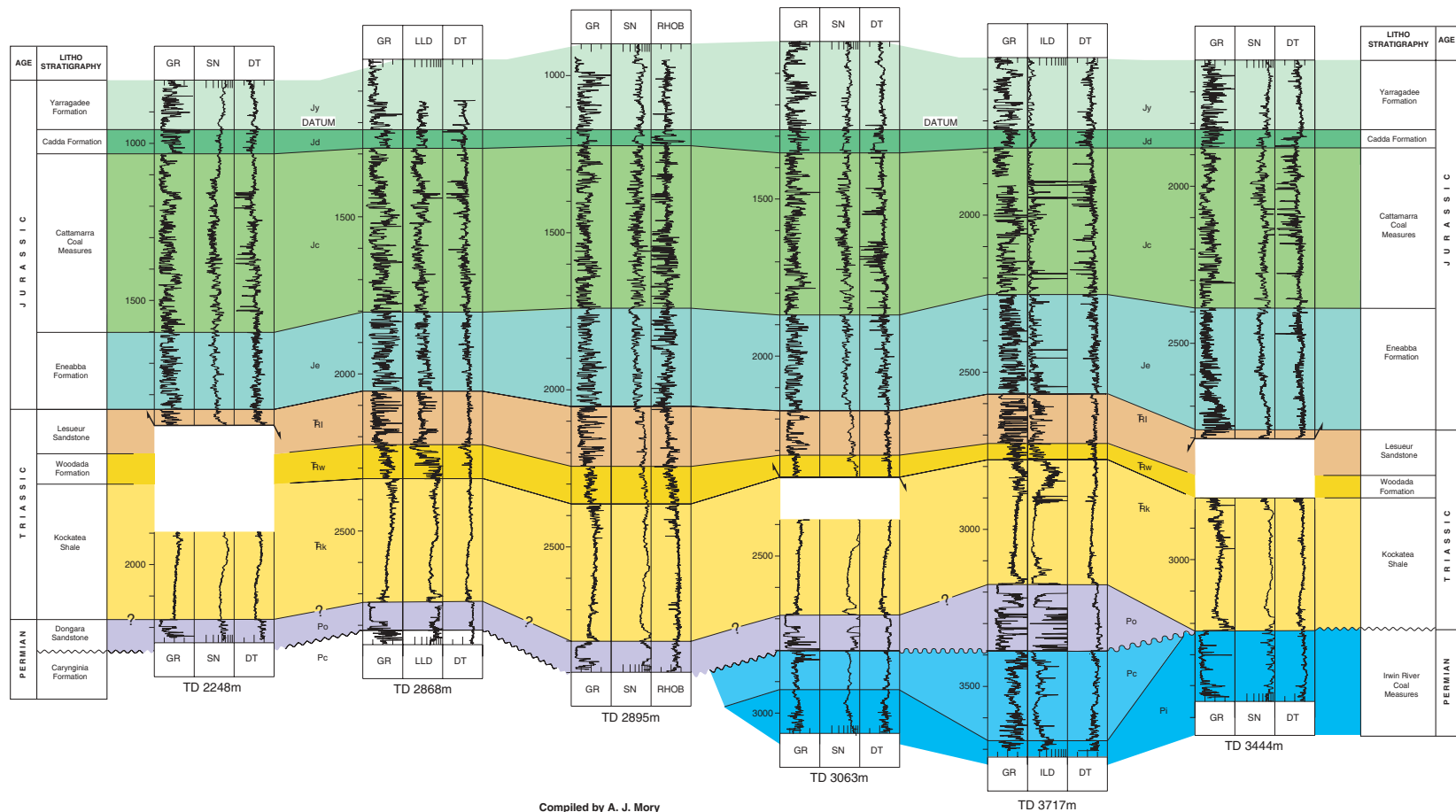
Heaton 1

East Heaton 1

Depot Hill 1

E



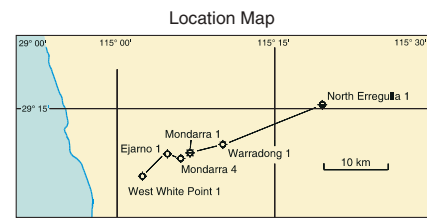


GEOLOGICAL SURVEY OF WESTERN AUSTRALIA
REPORT 46 PLATE 13

EAST-WEST LOG CORRELATION WEST WHITE POINT 1 TO NORTH ERREGULLA 1

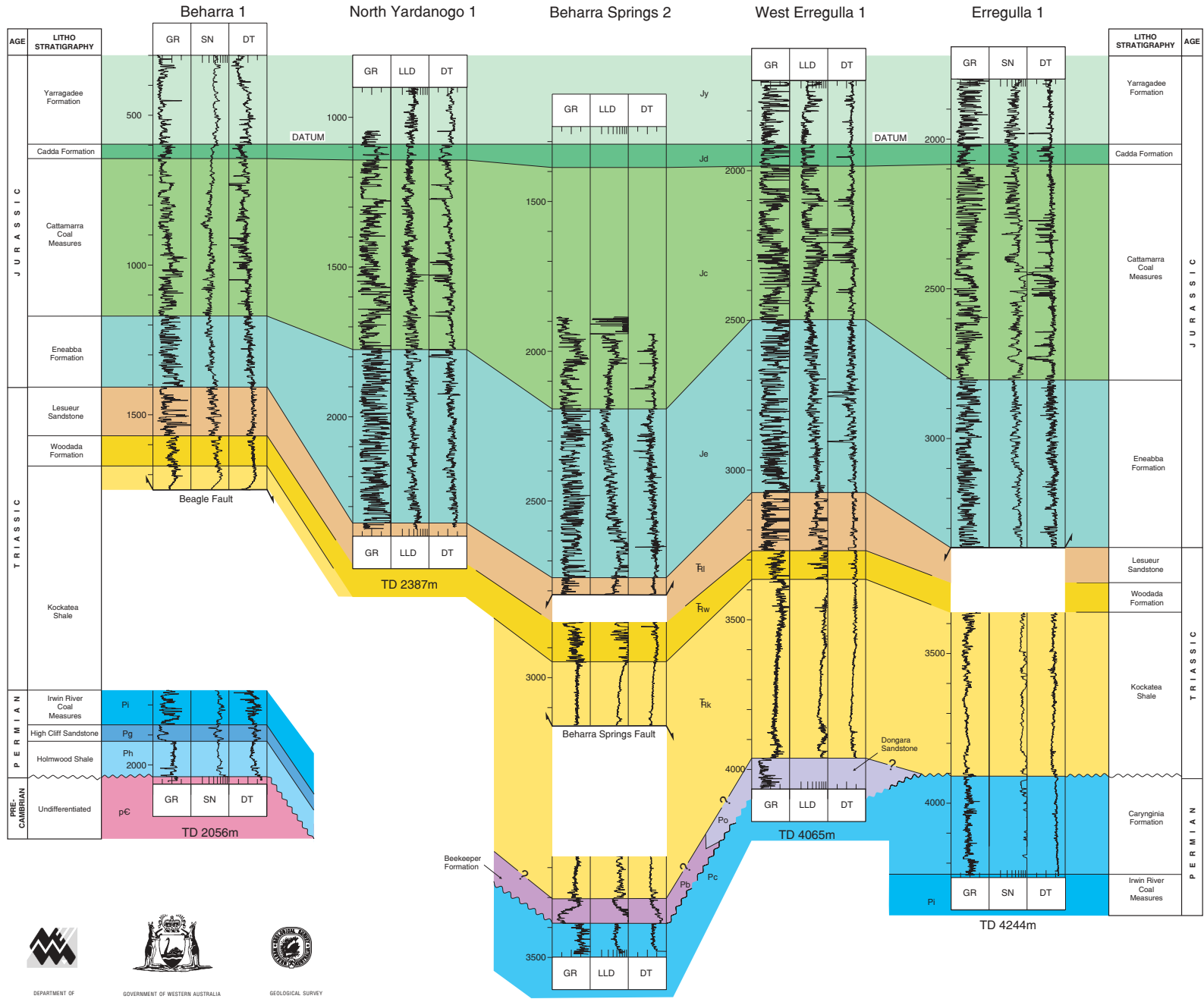
Datum : top Cadda Formation
Log depths in metres relative to KB

Compiled by A. J. Mory
Edited by S. Willis and G. Loan
Computer Assisted Drafting by E. Jones
Published by the Geological Survey of Western Australia.
Copies available from the Mining Information Centre,
Department of Minerals and Energy, 100 Plain Street,
East Perth, W.A., 6004. Phone (09) 222 3459,
Fax (09) 222 3444
Printed by Allwest Print, Western Australia
The recommended reference for this Plate is:
MORY, A. J., 1996 East-west log correlation: West White Point 1
to North Erregulla 1, Western Australia Geological Survey
Report 46, Plate 13



W

E



DEPARTMENT OF MINERALS AND ENERGY
K. R. PERRY, DIRECTOR GENERAL

GOVERNMENT OF WESTERN AUSTRALIA
HON. KEVIN MINSON, M.L.A.
MINISTER FOR MINES

GEOLOGICAL SURVEY OF WESTERN AUSTRALIA
PIETRO GILL, DIRECTOR

GEOLOGICAL SURVEY OF WESTERN AUSTRALIA
REPORT 46 **PLATE 14**

EAST-WEST LOG CORRELATION BEHARRA 1 TO ERREGULLA 1

Datum : top Cadda Formation
Log depths in metres relative to KB

SW

NE

BMR 10A

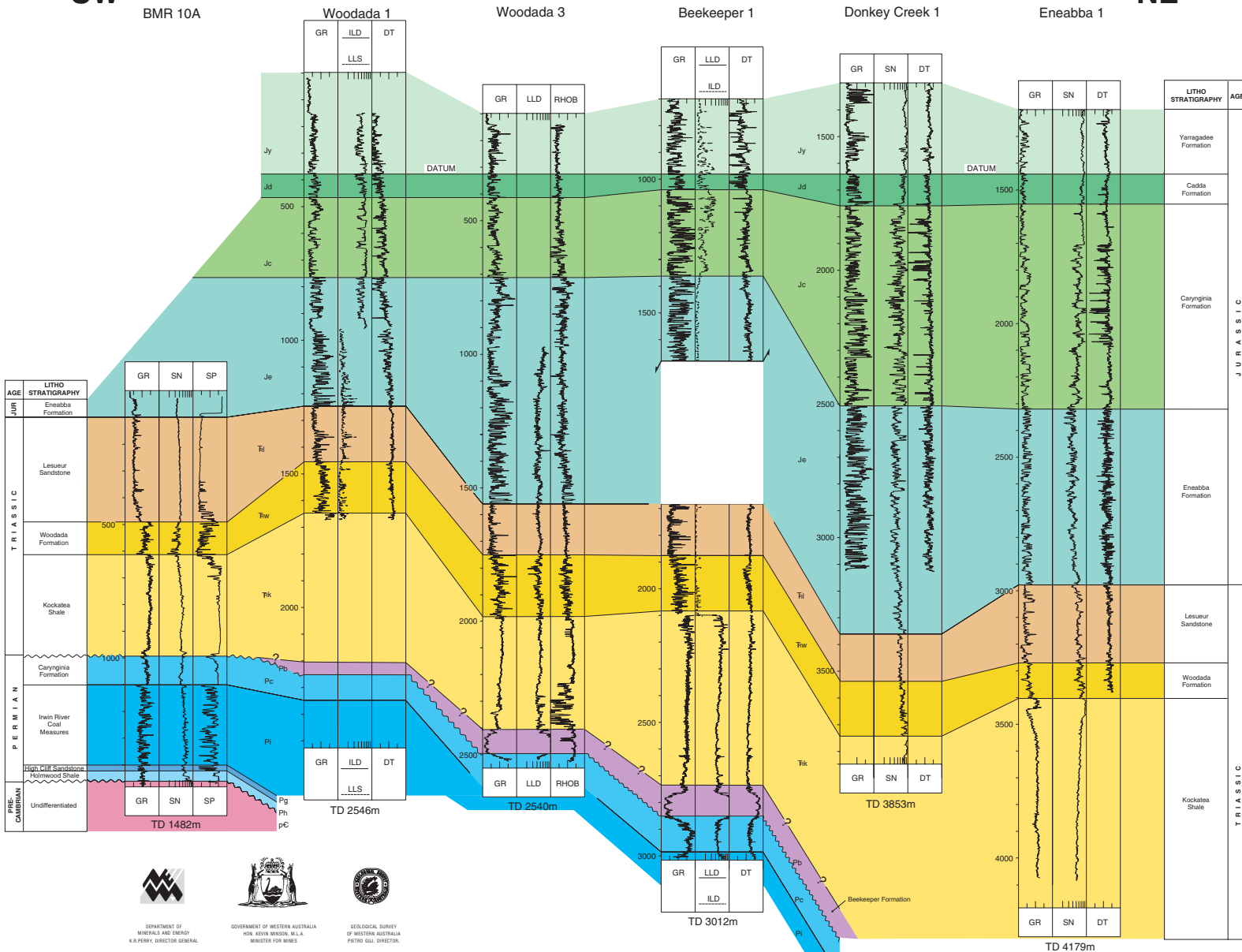
Woodada 1

Woodada 3

Beekesep 1

Donkey Creek 1

Eneabba 1



DEPARTMENT OF
MINERALS AND ENERGY
K. R. PERRY, DIRECTOR GENERAL



GOVERNMENT OF WESTERN AUSTRALIA
HON. KEVIN MANNION, M.L.A.
MINISTER FOR MINES



GEOLOGICAL SURVEY
OF WESTERN AUSTRALIA
PETRO GILL, DIRECTOR

GEOLOGICAL SURVEY OF WESTERN AUSTRALIA
REPORT 46
PLATE 15

SOUTHWEST - NORTHEAST LOG CORRELATION BMR 10A TO ENEABBA 1

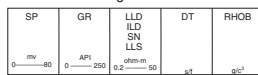
Datum : top Cadada Formation
Log depths in metres relative to KB

Compiled by A. J. Mory

Edited by S. Willis and G. Loan
Computer Assisted Drafting by E. Jones

Published by the Geological Survey of Western Australia.
Copies available from the Mining Information Centre,
Department of Minerals and Energy, 100 Plain Street,
East Perth, W.A., 6004. Phone (09) 222 3459,
Fax (09) 222 3444

Log Scales

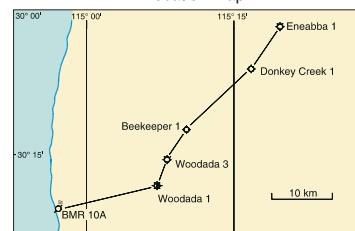


Normal Fault - break in log
indicates missing section

Printed by Allwest Print, Western Australia

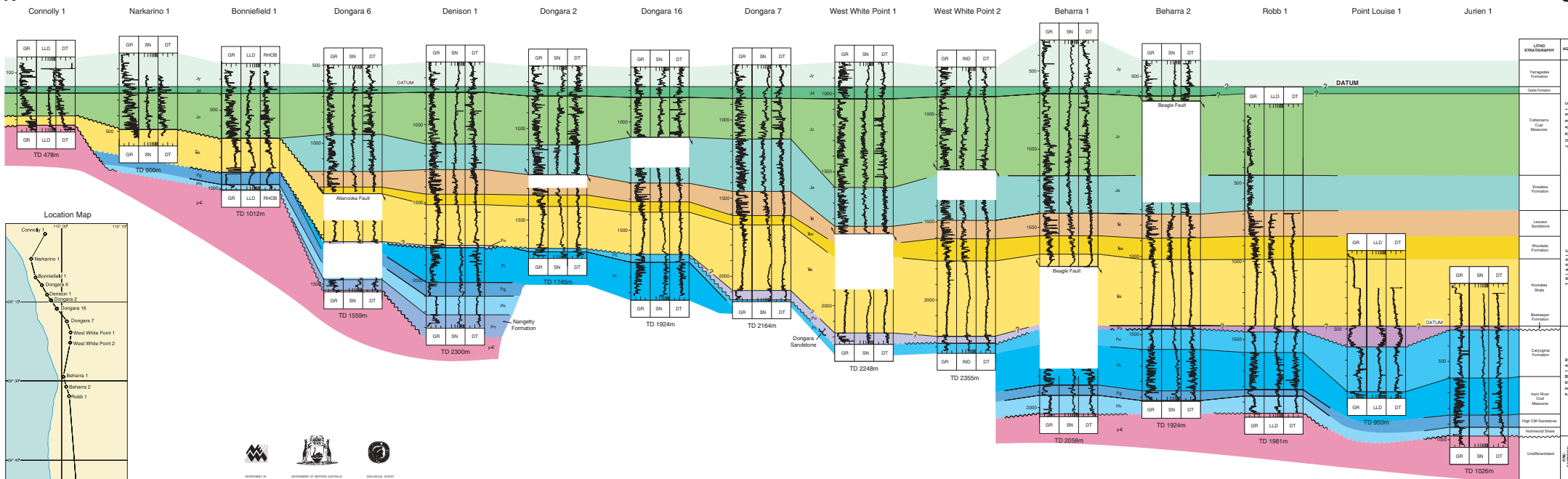
The recommended reference for this Plate is:
MORY, A. J., 1996 Southwest-northeast log correlation: BMR 10A
to Eneabba 1, Western Australia Geological Survey
Report 46, Plate 15

Location Map



N

S



GEOLOGICAL SURVEY OF WESTERN AUSTRALIA
REPORT 46 PLATE 16

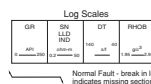
NORTH-SOUTH LOG CORRELATION CONNOLLY 1 TO JURIE 1

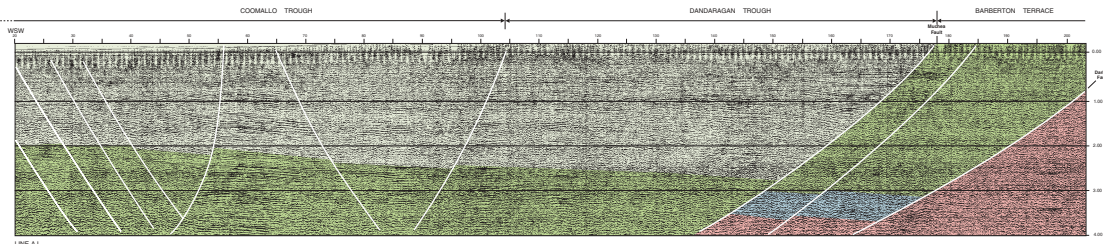
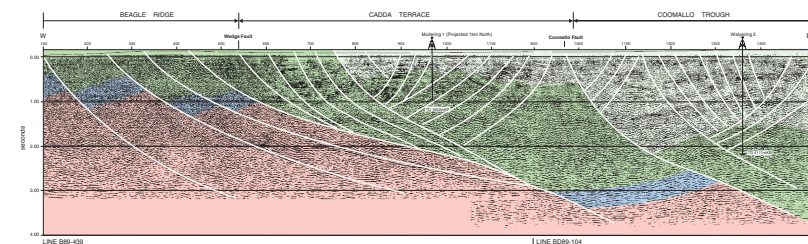
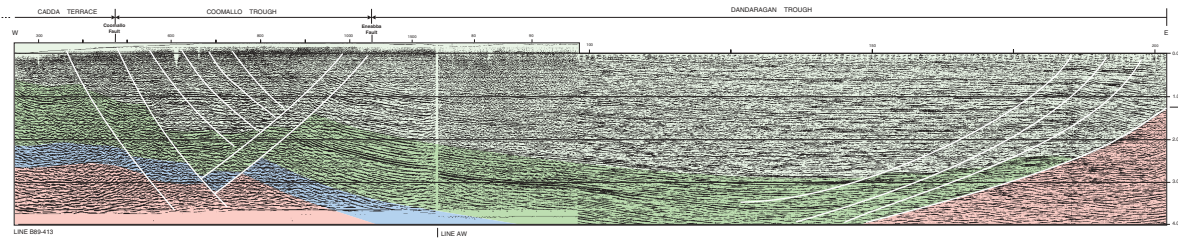
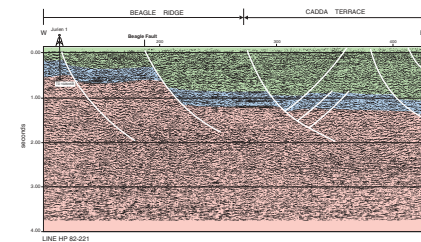
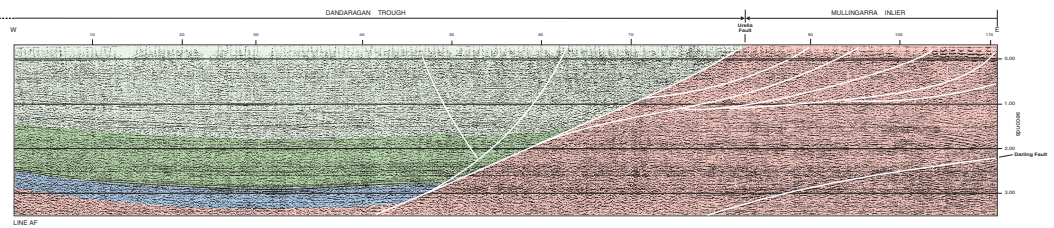
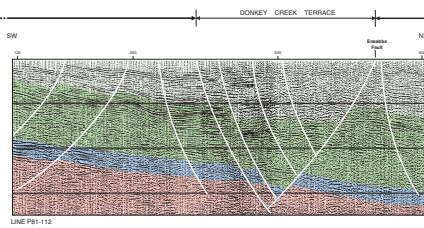
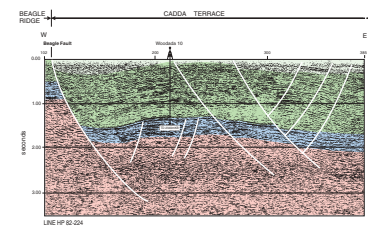
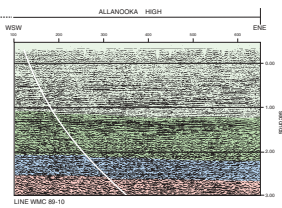
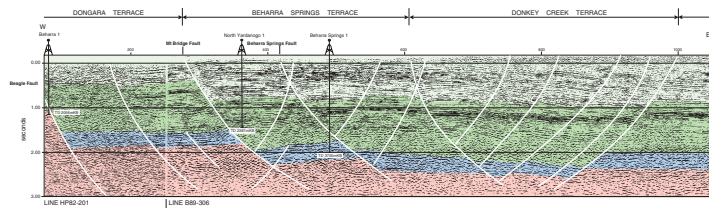
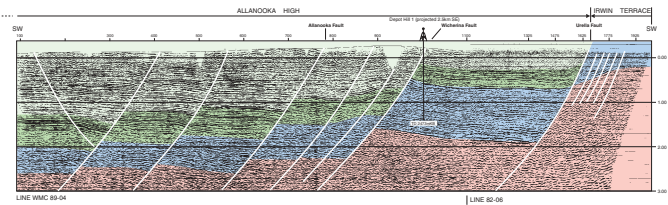
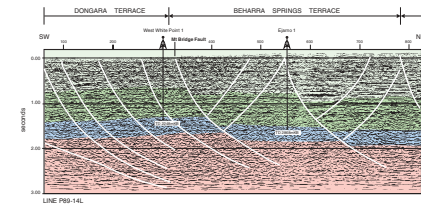
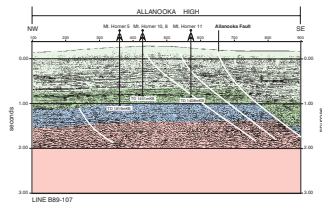
Datum: top Cadda Formation or top Beekeeper Formation
Log depths in metres relative to KB

Compiled by A. J. Mory

Edited by S. Willis and G. Loun
Computer Assisted Drafting by E. Jones
Published by the Geological Survey of Western Australia.
Copies available from the Mining Information Centre,
Department of Minerals and Energy, 100 Plain Street,
East Perth, W.A., 6004. Phone (09) 222 2485.
Fax (09) 222 2444.

Printed by Mores Print, Western Australia.
The recommended reference for this Plate is:
MORY, A. J., 1996 North-south log correlation, Connolly 1
to Jurien 1, Western Australia Geological Survey
Report 46, Plate 16.





GEOLOGICAL SURVEY OF WESTERN AUSTRALIA REPORT 46 PLATE 18 MONTAGE OF SEISMIC SECTIONS ONSHORE NORTHERN PERTH BASIN

Time-way time in seconds
Scale 1:100 000

Compiled by S. P. JERRY
Edited by S. Wills and G. Lister
Computer Aided Drafting by M. J. Jones
Published by the Geological Survey of Western Australia
Copies available from the Mining Information Centre,
Department of Mines and Energy, 120 York Street,
East Perth, W.A., 6004.
Telephone (09) 437 1231 Fax (09) 437 3441

The information contained in this report is the property of the Geological Survey of Western Australia.

Western Australia Geological Survey, Report 46, Plate 18

© Western Australia 1996

REFERENCE

Upper Jurassic — Lower Cretaceous

Triassic — Middle Jurassic

Permian

Precambrian

Petroleum well with depth below KB in metres

