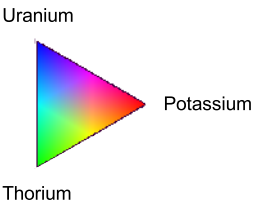
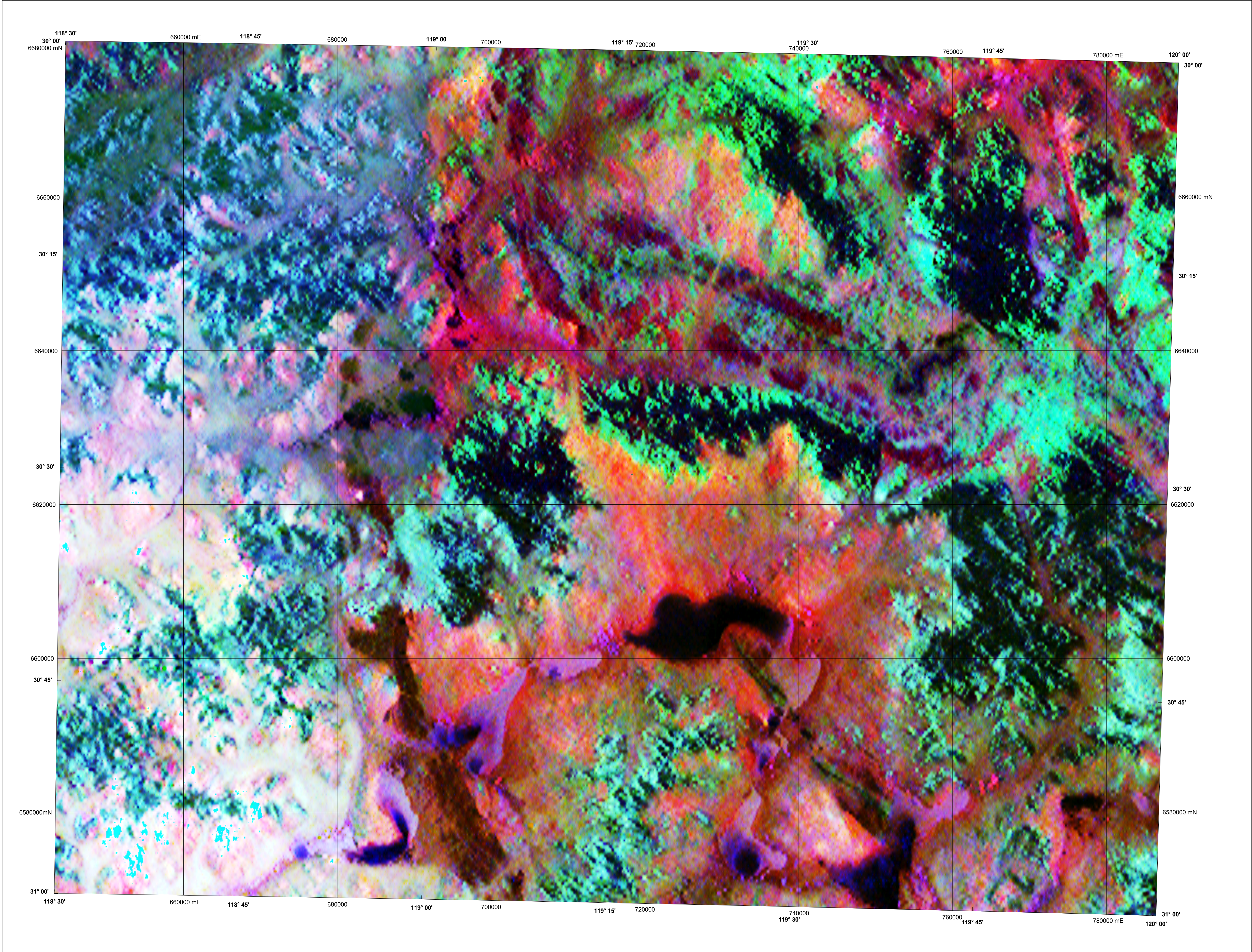


JACKSON

1:250 000 TERNARY RADIOMETRIC IMAGE

GEOLOGICAL SURVEY OF WESTERN AUSTRALIA

SHEET SH 50-12



Data ranges:  
Potassium 0 - 5 %  
Thorium 0 - 122 ppm  
Uranium 0 - 37 ppm

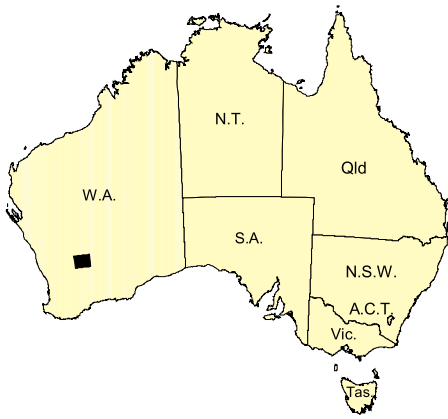
Kevron Geophysics Pty Ltd acquired these data in 1997 as two separate surveys that have been merged and now form part of the National Airborne Geophysics Database.

Published by the Geological Survey of Western Australia. Copies are available from the Information Centre, Department of Industry and Resources, 100 Plain Street, East Perth, WA 6004. Phone (08) 9222 3459, Fax (08) 9222 3444, www.doir.wa.gov.au

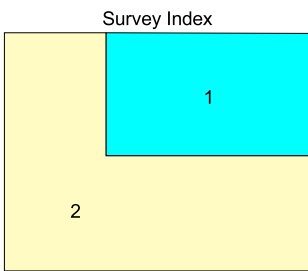
Secondary data processing R. Franklin  
Image processing J. H. Watt  
Cartography M. Vicentic  
Geophysics Project Manager S. H. D. Howard

These data are also available in digital form from the Information Centre or Geoscience Australia Airborne Geophysical Data Sales, GPO Box 378, Canberra, ACT 2601. Phone (02) 6249 9478, Fax (02) 6249 9913, www.ga.gov.au

The recommended reference for this map is:  
GEOLOGICAL SURVEY OF WESTERN AUSTRALIA, 2003, Jackson, W.A. Sheet SH 50-12. Western Australia Geological Survey, 1:250 000 Ternary Radiometric Image.



SHEET INDEX		
NINGHAN SH 50-7	BARLEE SH 50-8	MENZIES SH 51-5
BENCUBBIN SH 50-11	JACKSON SH 50-12	KALGOORLIE SH 51-9
KELLERBERRIN SH 50-15	SOUTHERN CROSS SH 50-16	BOORABBIN SH 51-13



This image is covered by the two surveys listed in the table below and shown on the survey index. The grid cell size is 80 m.

Survey ID	Survey name	Line spacing	Ground clearance	Crystal volume	Flight direction	Contractor	Job number	Date	Client
1	Jackson	400 m	50 m	33.6 l	90° - 270°	Kevron	1481	1997	GSWA / GA
2	Barlee Jackson	400 m	60 m	33.6 l	90° - 270°	Kevron	5106	1997	GSWA / GA



CLIVE BROWN, M.L.A.  
MINISTER FOR  
STATE DEVELOPMENT

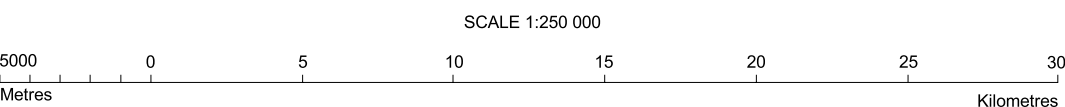
JIM LIMERICK  
DIRECTOR GENERAL



TIM GREFFIN  
DIRECTOR



NGA  
PRODUCT OF THE NATIONAL  
GEOSCIENCE AGREEMENT



UNIVERSAL TRANSVERSE MERCATOR PROJECTION  
HORIZONTAL DATUM: GEODETIC DATUM OF AUSTRALIA  
Grid lines indicate 20 000 metre interval of the Map Grid Australia Zone 50

The Map Grid Australia (MGA) is based on the Geocentric Datum of Australia 1984 (GDA84).  
GDA84 positions are compatible within one metre of the datum WGS84 positions.

GEOLOGICAL SURVEY OF WESTERN AUSTRALIA

TERNARY RADIOMETRIC IMAGE  
Potassium, Thorium, Uranium as red, green, blue

JACKSON  
SHEET SH 50-12

First Edition 2003  
© Western Australia 2003

WARNING: Inks are water soluble and will fade with prolonged exposure to light