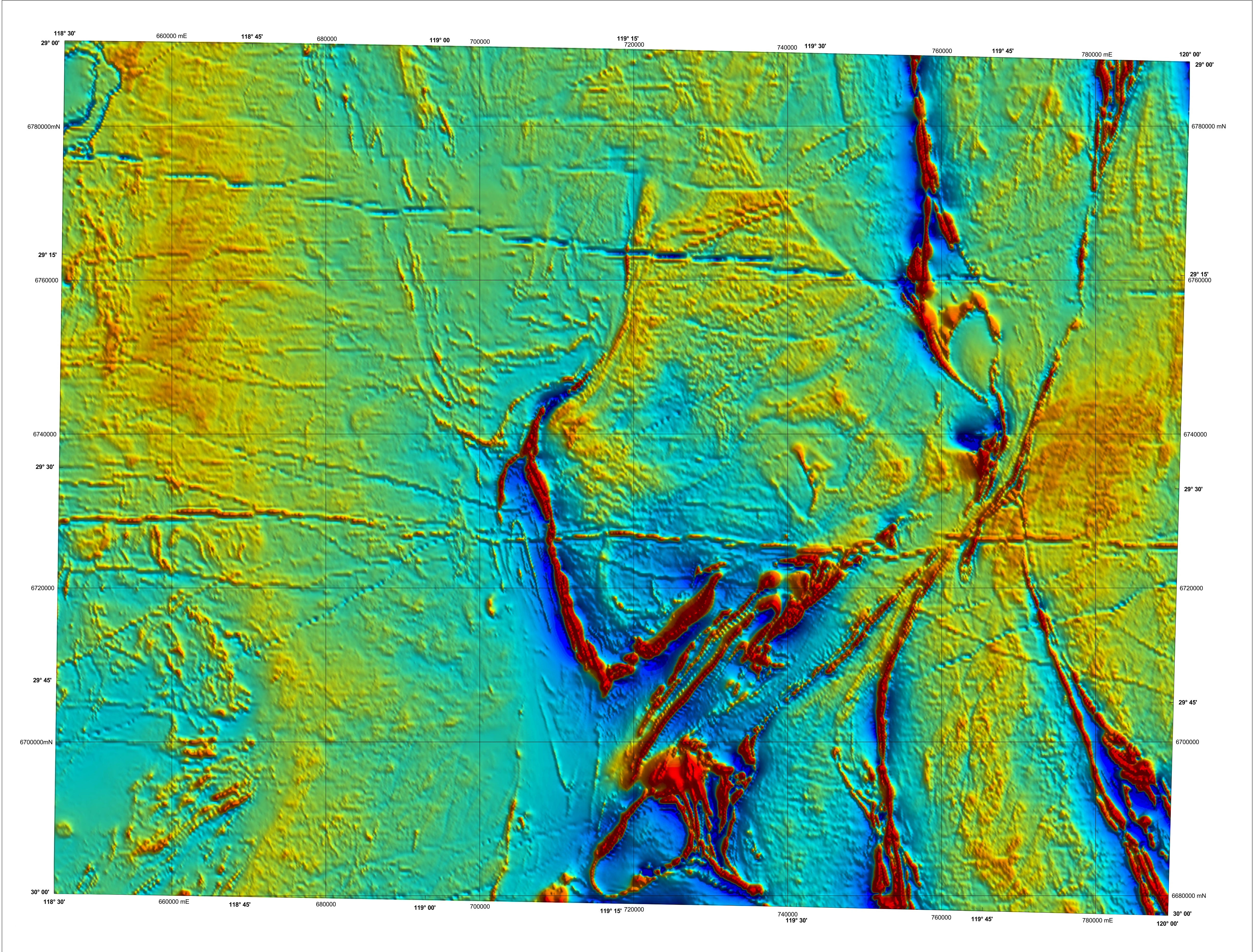


BARLEE

1:250 000 TOTAL MAGNETIC INTENSITY IMAGE

GEOLOGICAL SURVEY OF WESTERN AUSTRALIA

SHEET SH 50-8



7000

6200

5400

4600

3800

3000

nT

Kevron Geophysics Pty Ltd acquired these data in 1997 as two separate surveys that have been merged and now form part of the National Airborne Geophysics Database.

Published by the Geological Survey of Western Australia. Copies are available from the Information Centre, Department of Industry and Resources, 100 Plain Street, East Perth, WA 6004. Phone (08) 9222 3459, Fax (08) 9222 3444, [www.doir.wa.gov.au](http://www.doir.wa.gov.au)

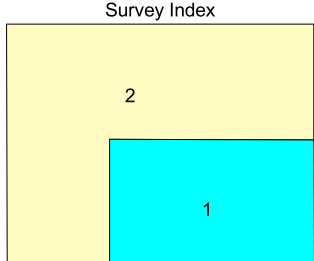
Secondary data processing  
Image processing  
Cartography  
Geophysics Project Manager

R. Franklin  
J. H. Watt  
M. Vicentic  
S. H. D. Howard

These data are also available in digital form from the Information Centre or Geoscience Australia Airborne Geophysical Data Sales, GPO Box 378, Canberra, ACT 2601. Phone (02) 6249 9476, Fax (02) 6249 9913, [www.ga.gov.au](http://www.ga.gov.au)

The recommended reference for this map is:  
GEOLOGICAL SURVEY OF WESTERN AUSTRALIA, 2003, Barlee, W.A. Sheet SH 50-8: Western Australia Geological Survey, 1:250 000 Total Magnetic Intensity Image.

SHEET INDEX		
KIRKALLOCKA SH 50-3	YULIANMI SH 50-4	LEONORA SH 50-1
NINNIHAN SH 50-7	BARLEE SH 50-8	MENZIES SH 51-5
BENCUBBIN SH 50-11	JACKSON SH 50-12	KALGOORLIE SH 51-9



This image is covered by the two surveys listed in the table below and shown on the survey index.  
The grid cell size is 80 m.

Survey ID	Survey name	Line spacing	Ground clearance	Flight direction	Contractor	Job number	Date	Client
1	Jackson	400 m	50 m	90° - 270°	Kevron	1481	1997	GSWA / GA
2	Barlee Jackson	400 m	60 m	90° - 270°	Kevron	5106	1997	GSWA / GA

Department of Industry and Resources

CLIVE BROWN, M.L.A.  
MINISTER FOR STATE DEVELOPMENT

Geological Survey of Western Australia

TM GRIFFIN  
DIRECTOR

GEOSCIENCE AUSTRALIA

NGA

PRODUCT OF THE NATIONAL GEOSCIENCE AGREEMENT

5000 0 5 10 15 20 25 30

Metres

0 5 10 15 20 25 30

Kilometres

SCALE 1:250 000

UNIVERSAL TRANSVERSE MERCATOR PROJECTION  
HORIZONTAL DATUM: GEODETIC DATUM OF AUSTRALIA  
Grid lines indicate 20 000 metre interval of the Map Grid Australia Zone 50

The Map Grid Australia (MGA) is based on the Geocentric Datum of Australia 1994 (GDA94).  
GDA94 positions are compatible within one metre of the datum WGS84 positions.

GEOLOGICAL SURVEY OF WESTERN AUSTRALIA

TOTAL MAGNETIC INTENSITY  
**BARLEE**  
SHEET SH 50-8

First Edition 2003  
© Western Australia 2003