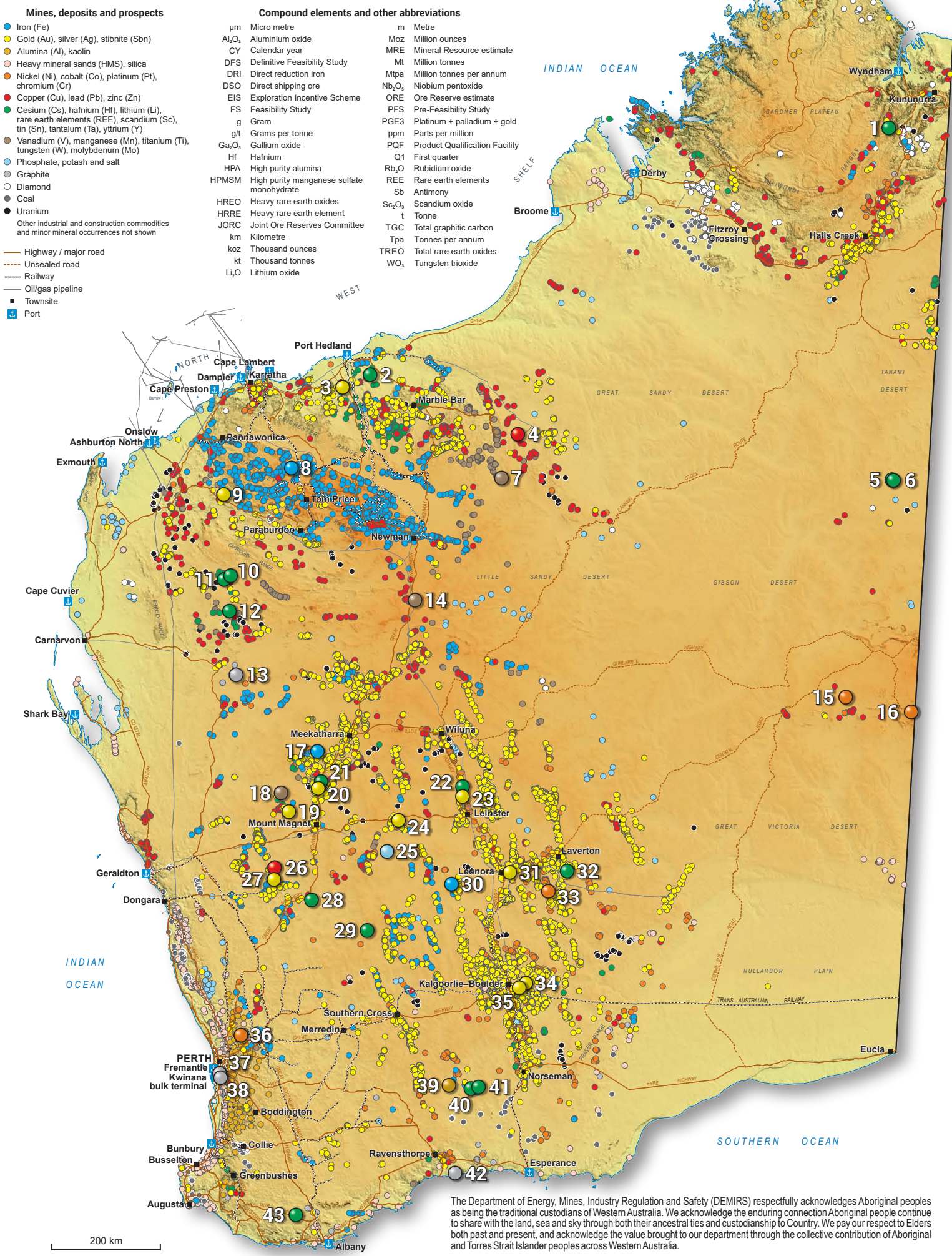


WESTERN AUSTRALIA

Selected exploration and mining highlights



1	Speewah Fluorite Scoping	The Speewah fluorite project has been awarded Major Project Status by the Australian Federal Government. The award recognises the national significance of the project and its alignment with the Australian Government's Critical Minerals Strategy and National Battery Strategy. <i>Tivan Ltd</i>		
2	Tabba Tabba – Strelley Lithium + tantalum Exploration	A maiden global MRE of 74.1 Mt at 1% Li ₂ O was reported for Tabba Tabba , and included resources from Leia, Luke, Chewy, Hutt and Han . A new discovery zone at Chewy North was also reported with intersections including 15 m at 1.6% Li ₂ O. <i>Wildcat Resources Ltd</i>		
3	Hemi Gold Feasibility	An updated MRE for Hemi is now 264 Mt at 1.3 g/t Au for 11.2 Moz of contained gold which includes the Crow, Aquila, Broilga, Eagle and Antwerp deposits. For the regional deposits, resource updates were completed for the Withnell, Camel, Roe, and Calvert deposits. The total Hemi and regional MRE increased to 310 Mt at 1.4 g/t Au for 13.6 Moz contained gold. <i>De Grey Mining Ltd</i>		
4	Nifty Copper Pre-Feasibility	A PFS was completed for the Nifty project with concentrate project ORE of 83 Mt at 0.9% Cu for 753 kt contained Cu (Nifty Surface Mine – oxide and sulfide ore) and an initial cathode project ORE of 10.6 Mt at 0.41% Cu for 44 kt contained copper (Nifty Heap Leach). <i>Cyprium Metals Ltd</i>		
5	Aileron Gold + copper + REE + niobium Exploration	Niobium mineralisation was reported at Aileron . The best intercept of 23 m at 4.2% Nb ₂ O ₅ was reported from Emily . Other notable intercepts include 47 m at 1% Nb ₂ O ₅ from Green , and 24 m at 2.1% Nb ₂ O ₅ from Crean . EIS co-funded diamond drilling at Perce intersected lamprophyres often associated with carbonatites, REE with up to 0.2% TREO, and a narrow vein of high-grade copper. <i>Encounter Resources Ltd</i>		
6	West Arunta Gold + copper + REE + niobium	A maiden Inferred niobium MRE was released for Luni . The deposit contains 200 Mt at 1% Nb ₂ O ₅ , with a high-grade subset of 53 Mt at 2.1% Nb ₂ O ₅ . The MRE was based on resource definition drilling with best intercepts including 78 m at 2% Nb ₂ O ₅ . <i>WA1 Resources Ltd</i>		
7	Balfour Mineral Field Manganese Scoping	The discovery of the W2 prospect, up to 3 km in strike with drilling results of up to 48.7% Mn including 5 m at 33.2% Mn, represents a new exploration model. A Scoping Study for the Balfour Mineral Field confirmed a 16-year mine life. HPMSM testwork delivered high-grade manganese concentrate, demonstrating downstream feedstock potential. <i>Black Canyon Ltd</i>		
8	Pilbara Iron Iron Pre-Feasibility	An upgraded MRE of 71.1 Mt at 57.4% Fe DSO was reported for the Eagle deposit, Blacksmith iron ore project, increasing the total Blacksmith MRE to 243 Mt at 59.3% Fe DSO. The global MRE includes resources from Champion, Blackjack, Delta, Paragon and Eagle . <i>Red Hawk Mining Ltd</i>		
9	Paulsens Gold Operating	First gold has successfully been poured from the refurbished processing facility at Paulsens . The first gravity gold was poured on 22 December 2024. <i>Black Cat Syndicate Ltd</i>		
10	Yangibana REE + niobium Feasibility	A maiden niobium MRE was announced for Bald Hill and Simon's Find . The Measured and Indicated MRE for niobium now stands at 6.7 Mt at 2,305 ppm Nb ₂ O ₅ for 15,501 t Nb ₂ O ₅ . <i>Hastings Technology Metals Ltd</i>		
11	Mangaroon REE + Niobium Exploration	EIS co-funded drilling at Gifford Creek Carbonatite-Stinger prospect intersected zones with assay results including 130 m at 0.7% Nb ₂ O ₅ . Another EIS co-funded drilling campaign at the Rocky Road prospect also intersected niobium mineralisation with assay results including 9 m at 0.3% Nb ₂ O ₅ . <i>Dreadnought Resources Ltd</i>		
12	Yinnetharra Lithium + tantalum + niobium Exploration	Resource definition drilling at Yinnetharra provided high-grade lithium results at Malinda M1, M36 and M47 . The best results include 124 m at 1.1% Li ₂ O at M1 , 25 m at 2.84% Li ₂ O from M36 and 78 m at 0.8% Li ₂ O from M47 . Drilling at Jamesons intersected spodumene-rich mineralisation with assays of 10 m at 2.2% Li ₂ O. <i>Delta Lithium Ltd</i>		
13	Graphite Bull Graphite Exploration	New high-grade assay results from drilling outside the existing resource at the Yalbra main zone include 124 m at 16.6% TGC with mineralisation that extends along a ~1,500 m strike length, and starts at surface and remains open at depth. <i>Buxton Resources Ltd</i>		
14	Butcherbird Manganese Operating	The updated MRE for the Butcherbird project increased by 6% to 274 Mt at 10.4% Mn with the Measured and Indicated classifications representing ~47% of the global MRE. <i>Element 25 Ltd</i>		
15	Dante Copper-titanium-PGE-gold-vanadium Exploration	Drilling at Reef 1 South confirmed an 11.2 km extension of the Dante Reefs discovery strike length, more than doubling the initial discovery strike length to approximately 20 km. Additional assays from the Cronus prospect confirms a large Cu-PGE sulfide system with results including 209 m at 0.11% Cu, 68.5 ppm Co and 116 m at 0.14 g/t PGE3 and 68.6 ppm Co. <i>Terra Metals Ltd</i>		
16	Wingellina Nickel + cobalt + scandium Feasibility	The Wingellina project, with an updated resource of 187.3 Mt at 0.91% Ni and 0.06% Co for 1.7 Mt of contained nickel metal, was awarded Major Project status by the Commonwealth Government. <i>Nico Resources Ltd</i>		
17	Weld Range Iron Feasibility	A FS was completed for Beebyn-W11 demonstrating a 7-year mine life. The maiden ORE is 10 Mt (dry basis) at an average grade of 62.2% Fe including 8.3 Mt of Proven and 1.7 Mt of Probable ore reserves. First production is expected in early 2025. <i>Feenix Resources Ltd</i>		
18	Western Queen – Warda Warra Gold-tungsten Exploration	Tungsten assays of pulp samples confirmed a high-grade tungsten discovery at Western Queen . New assay results include 3 m at 0.52% WO ₃ and 6 m at 0.24% WO ₃ . Tungsten mineralisation has now been defined over a 1,300 m strike, parallel and proximal to gold mineralisation and remains open in all directions. <i>Rumble Resources Ltd</i>		
19	Dalgaranga – Gilbeys Gold Feasibility	Thick, high-grade gold results from the Pepper deposit were intersected with up to 111.62 g/t Au. Several new discoveries were announced, including the Freak prospect. <i>Spartan Resources Ltd</i>		
20	Cue Gold – Central Murchison Gold Operating	An updated MRE for the total Westgold Company was 179 Mt at 2.29 g/t Au for 13.2 Moz of contained gold (includes the Cue Gold – Central Murchison, Fortnum and Murchison, Kambalda and Higginsville projects). This represents 60% growth in the company's gold Mineral Resource base. <i>Westgold Resources Ltd</i>		
21	North Stanmore REE Exploration	The North Stanmore REE MRE was upgraded to 235 Mt at 520 ppm TREO and 29 ppm Sc ₂ O ₃ , and included a higher-grade domain of 32.8 Mt at 1,025 ppm TREO. The resource contains a 35% HRE ratio (HREO/TREO) and the high value by-product Hf. <i>Victory Metals Ltd</i>		
22	Kathleen Valley Lithium + tantalum Operating	In July the first spodumene concentrate was produced at Kathleen Valley following the commissioning of the wet plant and end-to-end operation of the Kathleen Valley value chain. First development ore was mined from the underground at Mt Mann in August 2024. <i>Liontown Resources Ltd</i>		
23	Bellevue Gold Operating	Infill drilling results received down plunge of a previously reported high-grade shoot at the Deacon Main Lode in the Bellevue underground mine assayed up to 3,501 g/t Au with high-grade intersections including 5.3 m at 96.7 g/t Au. <i>Bellevue Gold Ltd</i>		
24	Sandstone Gold Exploration	Drilling at Bull Oak returned broad zones of gold mineralisation, including 212 m at 1.2 g/t Au. Multiple high-grade quartz reefs were intersected within this intercept including the Kohinoor North Reef with an assay of 1 m at 116 g/t Au. Multiple high-grade gold in rock chip samples were received at Bollinger including 151 g/t Au and 130 g/t Au. <i>Alto Metals Ltd and Brightstar Resources Ltd</i>		
25	Yuinmery Calcrete Calcrete Exploration	A JORC compliant MRE for the Yuinmery calcrete deposit has been classified in the Measured and Indicated categories for a total of 273,743 t at 100% calcrete with a density of 2.85 and an average acid neutralising capacity of 5.8. <i>Venus Metals Corporation Ltd</i>		
26	Golden Grove Copper-lead-zinc-gold Operating	Extension drilling below Europa , part of the Gossan Hill underground mine, intersected thick copper mineralisation including 43.9 m at 3% Cu, 0.4 g/t Au, and 18 g/t Ag. Drilling also intersected high-grade zinc mineralisation at Xantho with results including 19.8 m at 22% Zn, 0.2% Cu, 0.5 g/t Au, 50 g/t Ag, and 1.6% Pb. <i>29Metals Ltd</i>		
27	Golden Range Gold-antimony Exploration	New high-grade antimony results including 12.7 m at 4.98% Sb and 34 m at 1% Sb were announced at the Ardmore pit, part of the Ricciardo deposit. <i>Warriedar Resources Ltd</i>		
28	Mt Edon Lithium + tantalum + rubidium Exploration	A maiden Inferred MRE of 3.6 Mt at 0.22% Rb ₂ O and 0.07% Li ₂ O, containing >7,900 t of Rb ₂ O was released for Mt Edon . The MRE included a high-grade zone of 1.3 Mt at 0.33% Rb ₂ O and 0.07% Li ₂ O, with RC drilling intersecting high-grade zones including 90 m at 0.32% Rb ₂ O. <i>Everest Metals Ltd</i>		
29	Mons Nickel-REE Exploration	Assay results from Block 3 East returned extensive intersections of high-grade gallium, with intervals >100 ppm Ga ₂ O ₃ , and anomalous rare earth mineralisation (cesium, lanthanum and yttrium). Results include 32 m at 102 ppm Ga ₂ O ₃ with a peak value 4 m at 212 ppm Ga ₂ O ₃ and 240 m at 42 ppm Ga ₂ O ₃ . <i>Nimy Resources Ltd</i>		
30	Mt Bevan Iron Pre-Feasibility	A PFS was completed for the Mt Bevan project proposing a 12 mtpa operation over a 25-year mine plan. The proposed operation could achieve a DRI product grade of >70% Fe at 45 µm grind size. The PFS incorporated a MRE 1,290 Mt at 33.5% Fe. <i>Legacy Iron Ore Ltd</i>		
31	Malcolm Gold Exploration	Two gold doré bars, weighing 13.85 oz (431 g), were produced from the bulk sampling program at Golden Crown . The 30 rock chip samples analysed from within the bulk sampling area gave assay results up to 458.39 g/t Au. <i>Mt Malcolm Mines NL</i>		
32	Mt Weld REE Operating	The Mt Weld MRE increased by 92% to 106.6 Mt at 4.12% TREO for a total of 4.39 Mt of contained TREO and a 63% increase in the Ore Reserves to 32 Mt at 6.44% TREO for 2 Mt of contained TREO. The \$800 million Lynas Rare Earths Processing Plant in Kalgoorlie was also officially opened in November 2024. <i>Lynas Rare Earths Ltd</i>		
33	NiWest Nickel + cobalt Feasibility	A DFS for NiWest confirmed it to be a commercial open pit mining operation with an average production ~90,000 tpa nickel sulfate and ~7,700 tpa cobalt sulfate for ~20,000 tpa contained nickel and 1,600 tpa contained cobalt, supporting a 35-year mine life. An ORE at 0.5% Ni cut-off of 84.7 Mt at 0.94% Ni and 0.06% Co, underpins the entire mining life. <i>Alliance Nickel Ltd</i>		
34	New Bulung – Boundary Gold Operating	The Myhree open pit achieved first ore on 26 July 2024 and the first gold doré from the stockpiled ore was poured ahead of schedule in October. <i>Black Cat Syndicate Ltd</i>		
35	Boorara Gold Operating	Mining at Boorara commenced in Pit 2 (Regal ore zone). The first ore stockpile of 54 380 t from Pit 2 (in the North) and Pit 4 (in the south) was hauled to the Paddington mill for first gold production at an expected grade of 0.8 g/t Au and a recovery of 94%. <i>Horizon Minerals Ltd</i>		
36	Gonneville PGE + gold + nickel + cobalt + copper Pre Feasibility	The Gonneville project has been awarded Major Project status by the Australian Federal Government recognising the national significance of the project to the development of Australia's critical minerals sector. The State Government has also granted Gonneville 'Strategic Project status' under the Western Australian Lead Agency Framework. <i>Chalice Mining Ltd</i>		
37	Hazer Commercial Demonstration Graphite Operating	The Hazer Group achieved first production of hydrogen and graphite at its Commercial Demonstration project plant using the Hazer Process, a low carbon emission hydrogen and graphite production process. <i>Hazer Group Ltd</i>		
38	Kwinana EcoGraf Graphite Operating	The Kwinana EcoGraf PQF was commissioned and the first continuous run using unpurified spherical graphite concentrate was successfully achieved. This highlights a major milestone being achieved through State-of-the-Art Facility to produce Battery Anode Material for the lithium-ion battery market. <i>EcoGraf Ltd</i>		
39	Lake Hope Kaolin + alumina Scoping	An updated MRE for Lake Hope includes a Measured resource of 730,000 t of lake clay at 25.8% Al ₂ O ₃ , together with 1.88 Mt at 25% Al ₂ O ₃ in the Indicated resource category and 0.17 Mt at 23.1% Al ₂ O ₃ in the Inferred resource category for a global MRE of 2.78 Mt at 25.1% Al ₂ O ₃ for 700 kt of contained alumina. <i>Impact Minerals Ltd</i>		
40	Lake Johnston Lithium Exploration	Multiple zones of high-grade lithium were intersected in maiden drilling at Jaegermeister , with best intercepts of 10 m at 1.19% Li ₂ O. Drilling at Burmeister also intersected spodumene-bearing pegmatites, with best results including 8 m at 1.92% Li ₂ O. <i>TG Metals Pty Ltd</i>		
41	Lake Johnston Lithium + tantalum + nickel Exploration	A new discovery in spodumene-bearing pegmatites was confirmed at Medcaif West . Significant intercepts from RC drilling include results of 18 m at 1.46% Li ₂ O. The spodumene-bearing pegmatites extend for a strike length of ~1.2 km. <i>Charger Metals NL</i>		
42	Springdale Graphite Scoping	High-grade graphite drilling results from Springdale Central deposit include 13.4 m at 19.2% TGC. High-grade graphite intercepts from diamond drilling at the Mason Bay deposit include 11 m at 14.3% TGC. <i>International Graphite Ltd</i>		
43	Rocky Gully REE + scandium Exploration	EIS co-funded diamond drilling program to test carbonatite mineralisation at Ivar intersected carbonatite dyke and related alteration halo. Assays with best intercepts include 9 m at 0.33% TREO and 7.3 m at 335 ppm Sc ₂ O ₃ confirming a REE enrichment in the regolith. <i>Narryer Metals Ltd</i>		

The Department of Energy, Mines, Industry Regulation and Safety (DEMIRS) respectfully acknowledges Aboriginal peoples as being the traditional custodians of Western Australia. We acknowledge the enduring connection Aboriginal people continue to share with the land, sea and sky through both their ancestral ties and custodianship to Country. We pay our respect to Elders both past and present, and acknowledge the value brought to our department through the collective contribution of Aboriginal and Torres Strait Islander peoples across Western Australia.

For more information, contact: minedex@demirs.wa.gov.au

WESTERN AUSTRALIA – THE WORLD’S PREMIER MINING STATE

Fees, securities and minimum expenditures[#]

<i>Licence/lease</i>	<i>Maximum area</i>	<i>Term</i>	<i>Application fee</i>	<i>Rent</i>	<i>Security</i>	<i>Minimum annual expenditure*</i>
Prospecting licence	200 ha	Four years (then four-year extension)	\$455	\$4.20 per ha Min: \$38.80	\$5k each	\$40 per ha Min: \$2k
Special prospecting licence for gold	10 ha (maximum)	Min. three months (then three-month extension up to four years)	\$455	\$38	\$5k each	\$2k
Exploration licence	70 blocks normally (200 blocks in greenfields areas)	Five years (then two-year extension)	1 Block \$479 >1 Block \$1743	Per block Years 1–3: \$169 Years 4–5: \$303 Years 6–7: \$414 Years 8+: \$784	\$5k each	Years 1–3 ≤20 blocks Min: \$10–20k >20 blocks \$1k per block
Mining lease minerals dissolved in brine	Not applicable	21 years renewable	N/A	Years 1–5 \$3.30 per ha Years 6+ \$7.70 per ha	\$5k each	\$100 per ha Min: \$5k if <5 ha, otherwise \$10k
Mining lease	Not applicable	21 years renewable	\$669	\$28.60 per ha	\$5k each	\$100 per ha Min: \$5k if <5 ha, otherwise \$10k
General purpose lease	10 ha or larger with Minister’s approval	21 years renewable	\$669	\$26.40 per ha	\$5k each	Covenant in lieu
Miscellaneous licence	Not applicable	21 years renewable	\$669	\$26.40 per ha	\$5k each	Covenant in lieu

[#] <https://www.wa.gov.au/system/files/2025-03/minerals-feesandcharges.pdf>

* includes rent payments

ha = hectare (100 × 100 m)

Block = approx. 3 km²

Examples of royalty rates

The full list of royalty rates is in Regulation 86 of the *Mining Regulations, 1981* or the relevant State Agreement

Limestone (construction/metallurgical)	\$0.73 – \$1.17 per tonne
Coal	7.5%, if exported
Bauxite	7.5%
Copper	5% (concentrate); 2.5% (metal)
Nickel in concentrate	\$ royalty = 2.5 × D × f/100 D: percentage Ni in concentrate f: Ni metal price per tonne
Lithium minerals	5%
Iron ore (DSO) fines/lump	7.5%
Beneficiated iron ore and magnetite	5%
Gold (2500 oz exempt)	2.5% of metal value
Zircon concentrate	5% of sales value

Tonnage-based rates Sales value-based rates

DSO = Direct shipping ore

APRIL 2025

Geoscience and resource information

All free via (www.demirs.wa.gov.au)

- Maps and reports (www.demirs.wa.gov.au/ebookshop)
- Live databases of mineral deposits (www.demirs.wa.gov.au/minedex)
- Mineral exploration reports (www.demirs.wa.gov.au/wamex)
- Download maps and databases (<https://dasc.dmirs.wa.gov.au>)
- Online GIS facility (www.demirs.wa.gov.au/geoview)
- Geophysical data and images (www.demirs.wa.gov.au/geophysics)
- Geochemical data

Exploration and mining licence information

All free via (www.demirs.wa.gov.au)

- Online map service (TENGRAPH Web — www.demirs.wa.gov.au/tengraph) continuously updated showing location of all licences and applications
- Full ownership and other data for all licences available via online system, Mineral Titles Online (MTO) (www.demirs.wa.gov.au/mineraltitlesonline)
- Transparent licence system where all licence information can be viewed by anyone
- Explortion and mining licence information

Comprehensive and well-known mining legislation

Free download of the Mining Act and Regulations from (www.legislation.wa.gov.au)

This site also has current copies of all other Western Australian legislation

- Titles are for 'all' minerals*
- First in time application system
- Security of tenure when moving from exploration to mining title
- Mining title can be granted at pre-feasibility stage
- Annual exploration expenditure commitments
- Annual 'rental' fee for licence
- Annual reporting of activities

Exploration licences

- Graticular system used based on a 'block' that is one minute of latitude × one minute of longitude
- Maximum number of blocks:
 - in greenfields areas: 200
 - in non-greenfields areas: 70
- If after five years the licence is extended, 40% of the area must be surrendered at end of sixth year

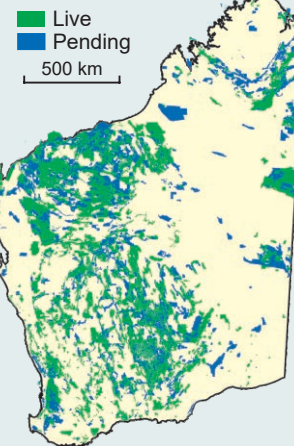
Mining lease applications

There are two ways to submit applications:

- 'Mining proposal' involving environmental assessment before grant
- Mineralisation Report and Supporting Statement, or Resource Report and Supporting Statement. Mining proposal and environmental assessment submitted for approval at later date.

* Legislation gives Ministerial discretion to restrict minerals or refuse in public interest. Rules of procedural fairness apply.

MINING TENEMENTS



as at April 2025

Taxes and mining royalties

Mining tax

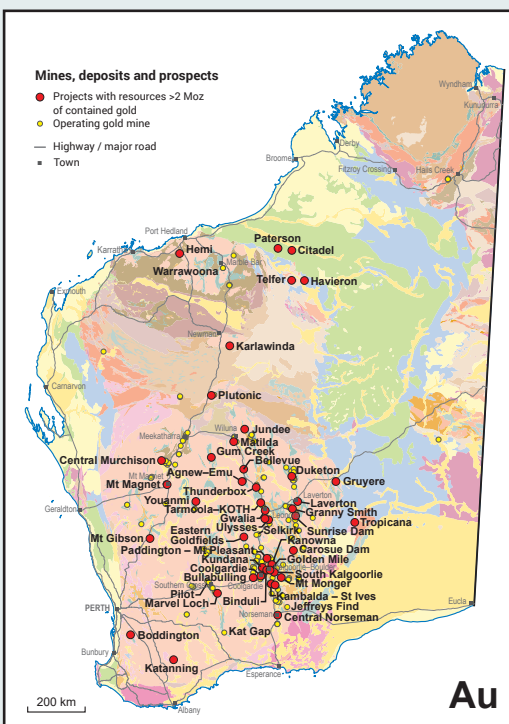
- Normal company tax rate ranges between 27.5 and 30% on profit
- Goods and services tax of 10%

Royalties on production

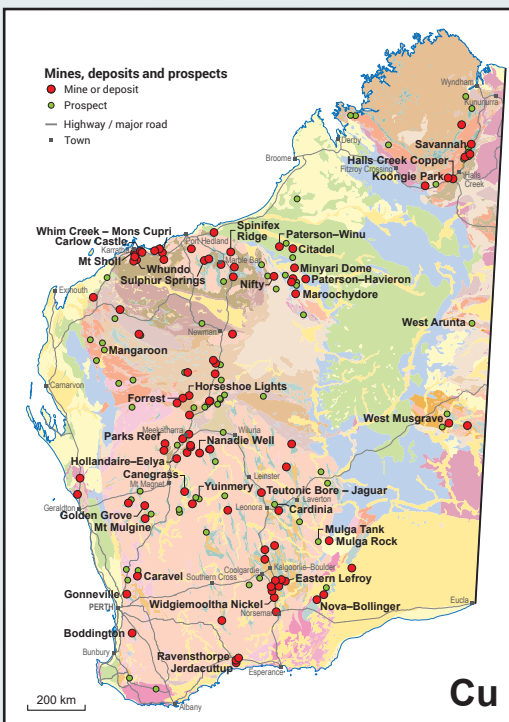
- The Mining Act and Regulations or the various State Agreement Acts set out royalty provisions and royalty rates
- The amount of royalty paid is a deduction for income tax assessment
- The amount of royalty paid can be reduced by allowable costs involved in transporting the mineral to the purchaser

Royalties are levied on the basis of:

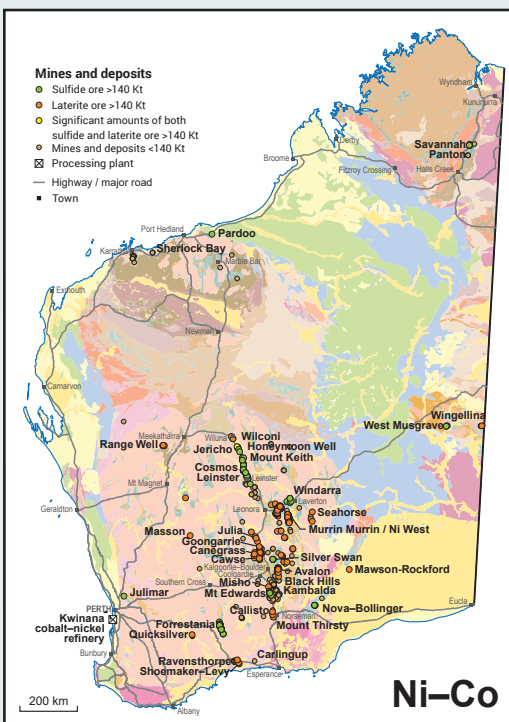
- Tonnage (rock, gravel, limestone)
- Sales value (most metals, gems, diamonds)



Au



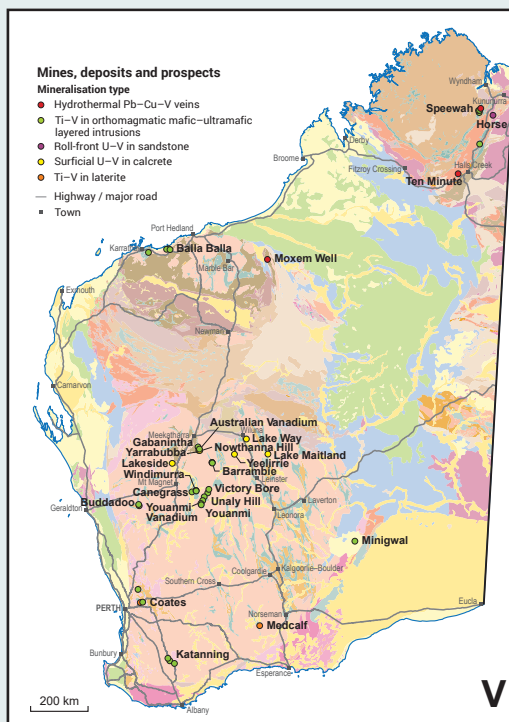
Cu



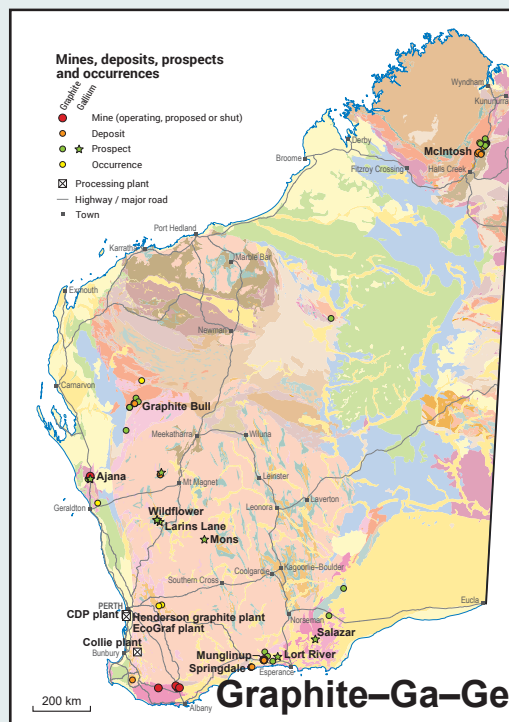
Ni–Co



Li



V



Graphite–Ga–Ge



REE

Department of Energy, Mines,
Industry Regulation and Safety
(the principal mineral industry regulator)
www.demirs.wa.gov.au

Department of Jobs, Tourism, Science and Innovation
(coordinates the development of major resource
and infrastructure projects)
www.jtsi.wa.gov.au

Western Australian State Law Publisher
(free downloads of WA legislation)
www.legislation.wa.gov.au

Department of Foreign Affairs and Trade
www.dfat.gov.au

Australian Tax Office
www.ato.gov.au

Austrade
(Australian Trade Commission)
www.austrade.gov.au