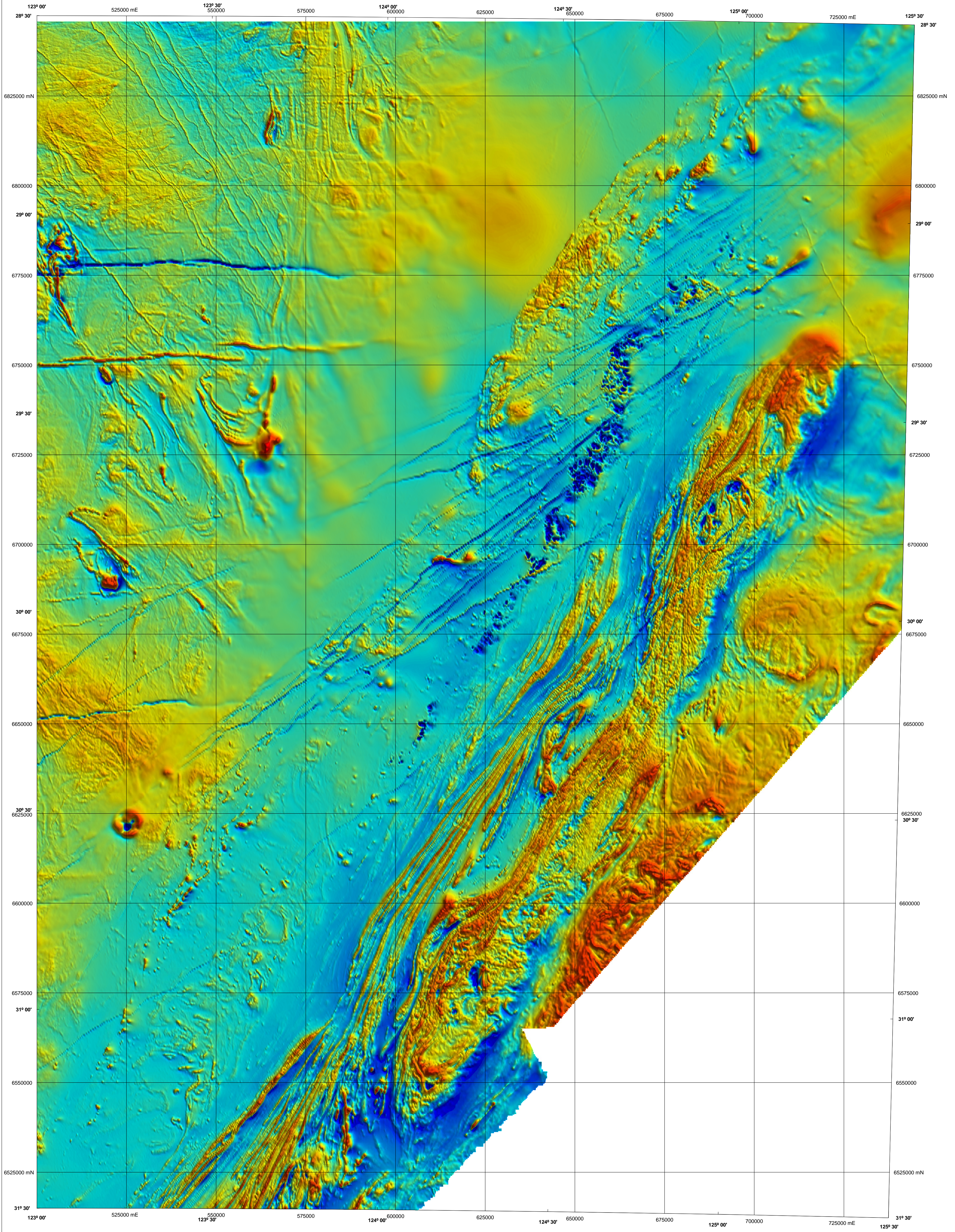


EAST YILGARN

1:500 000 TOTAL MAGNETIC INTENSITY IMAGE

GEOLOGICAL SURVEY OF WESTERN AUSTRALIA

1:250 000 SHEETS SH 51-7, SH 51-11
PART OF 1:250 000 SHEETS SH 51-3, SH 51-4, SH 51-8, SH 51-12, SH 51-15



2080

1430

785

138

-508

-1159

nT

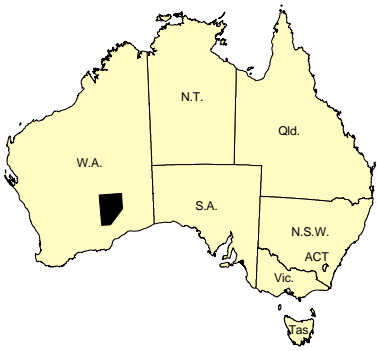
Data acquired in 2006 were merged by Geological Survey of Western Australia with existing government and private company data, flown between 1989 and 2003. These data now form part of the National Airborne Geophysical Database.

Published by the Geological Survey of Western Australia. Copies are available from the Information Centre, Department of Industry and Resources, 100 Plain Street, East Perth, WA 6004. Telephone (08) 9222 3459, Fax (08) 9222 3444, www.diri.wa.gov.au

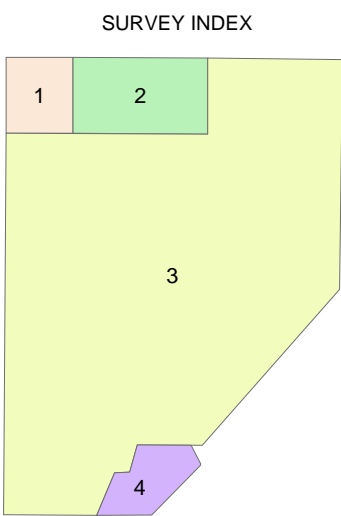
Compilation and Image processing J. H. Watt
Cartography J. Hogen-Esch
Geophysics Project Manager S. H. D. Howard

Individual located data sets and grids are available in digital form from the Sales Centre, Geoscience Australia, GPO Box 378, Canberra, ACT 2601. Telephone (02) 6249 9966, Fax (02) 6249 9960, or by download from Geoscience Australia, www.geoscience.gov.au/gadds

The recommended reference for this map is: GEOLOGICAL SURVEY OF WESTERN AUSTRALIA 2006, East Yilgarn, W.A. Sheets SH 51-7, SH 51-11, and Part Sheets SH 51-3, SH 51-4, SH 51-8, SH 51-12 and SH 51-15. Western Australian Geological Survey, 1:500 000 Total Magnetic Intensity Image.



1:250 000 SHEET INDEX			
DURKIN SH 51-14	THROSBELL SH 51-15	WESTWOOD SH 51-16	LENNIS SH 51-13
LAVERTON SH 51-12	RASON SH 51-13	NEALE SH 51-14	VERNON SH 51-11
EDUBONA SH 51-16	MINDAL SH 51-17	PUMPERIDGE SH 51-18	JURILEE SH 51-15
KURNALLI SH 51-10	CUNDELELL SH 51-11	SEAFORD SH 51-12	LOCKGANGA SH 51-9
WEDDERBOLTHA SH 51-14	ZANTHUS SH 51-15	NARETHA SH 51-16	MAJURA SH 51-13
NORSEMAN SH 51-2	BALLADONNA SH 51-3	CULVER SH 51-4	BURNABEE SH 51-1



The image is compiled from four surveys that are listed below, the areas covered by each are shown on the survey index. The grid cell size is 80 m.

Survey ID	Survey name	Flight line spacing	Flight line direction	Ground clearance	Contractor	Date	Client
1	Yilgarn	200 m	90° – 270°	60 m	World Geoscience	1989	World Geoscience
2	Rason	400 m	0° – 180°	60 m	GA	2003	GA
3	East Yilgarn	400 m	90° – 270°	60 m	Fugro	2006	GSWA/GA
4	Central Fraser	300 m	90° – 270°	70 m	Kevron	1999	BHP Minerals Pty Ltd



Department of
Industry and Resources

Geological Survey of
Western Australia



Australian Government
Geoscience Australia

NGA

PRODUCT OF THE NATIONAL
GEOSCIENCE AGREEMENT

SCALE 1:500 000

5000 0 5 10 15 20 25 30 35 40 45 50
Metres Kilometres

UNIVERSAL TRANSVERSE MERCATOR PROJECTION
HORIZONTAL DATUM: GEODETIC DATUM OF AUSTRALIA
Grid lines indicate 25 000 metre interval of the Map Grid Australia Zone 51



The Map Grid Australia (MGA) is based on the Geocentric Datum of Australia 1994 (GDA94).
GDA94 positions are compatible within one metre of the datum WGS84 positions.

GEOLOGICAL SURVEY OF WESTERN AUSTRALIA

TOTAL MAGNETIC INTENSITY IMAGE

EAST YILGARN

1:250 000 SHEETS SH 51-7, SH 51-11
PART OF 1:250 000 SHEETS SH 51-3, SH 51-4,
SH 51-8, SH 51-12, SH 51-15

First Edition 2006

Version 1.0 — June 2006

© Western Australia 2006

WARNING: Inks are water soluble and will
fade with prolonged exposure to light.