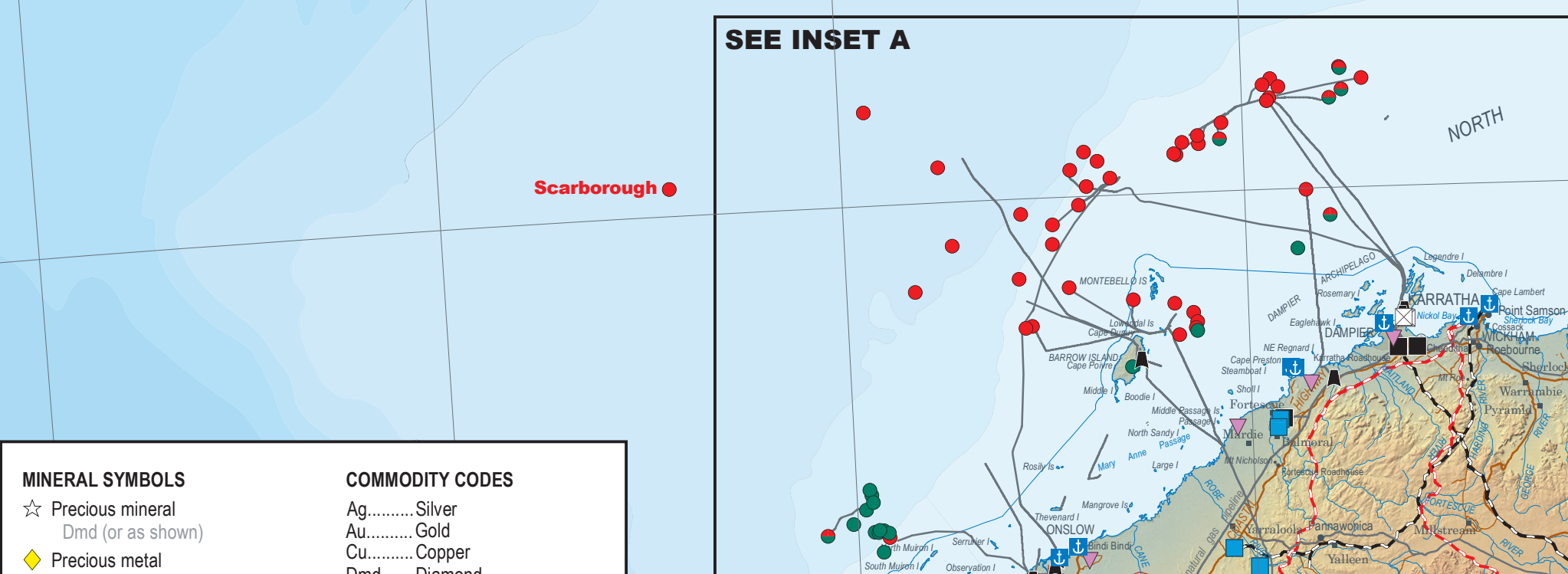
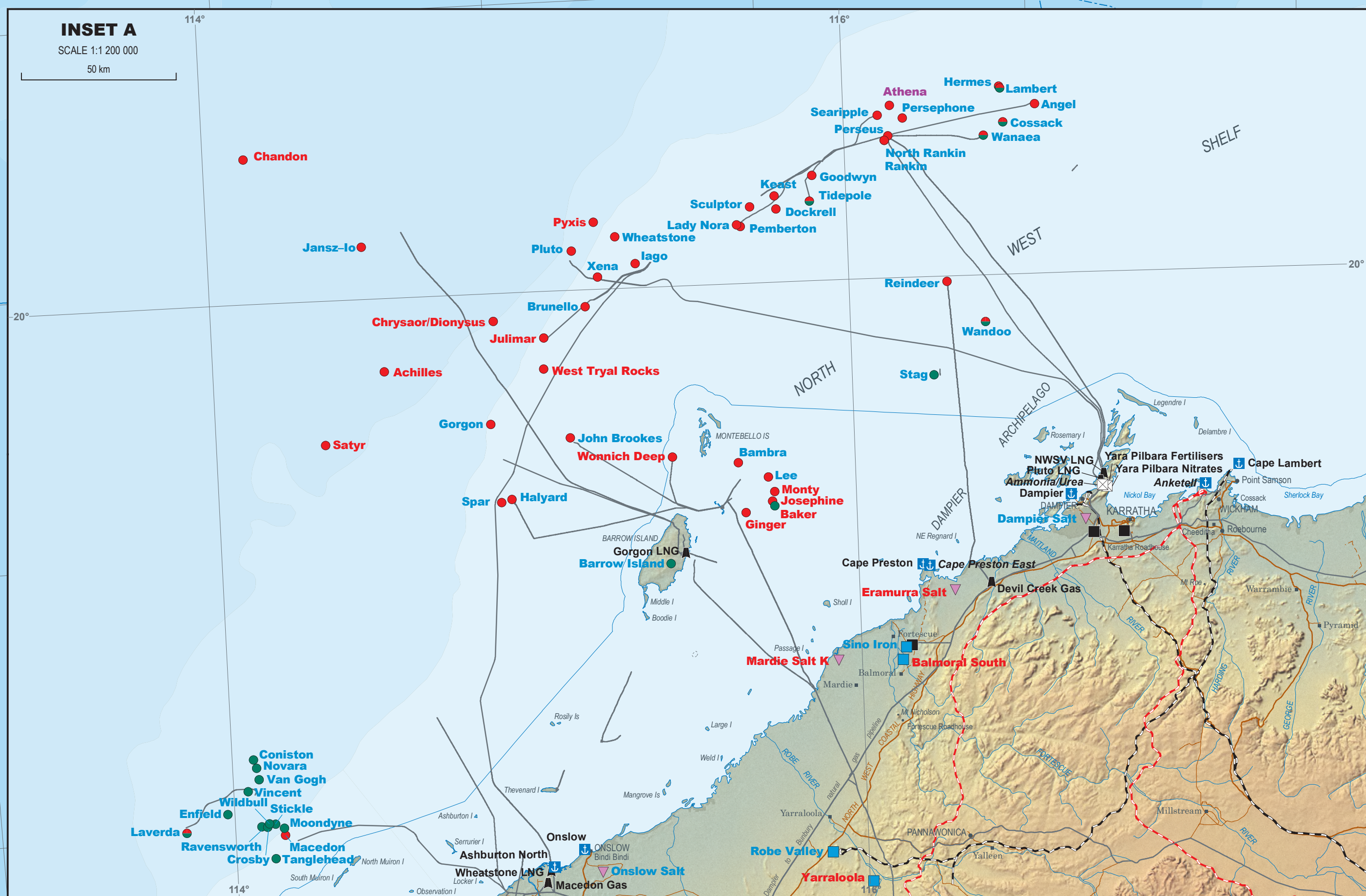
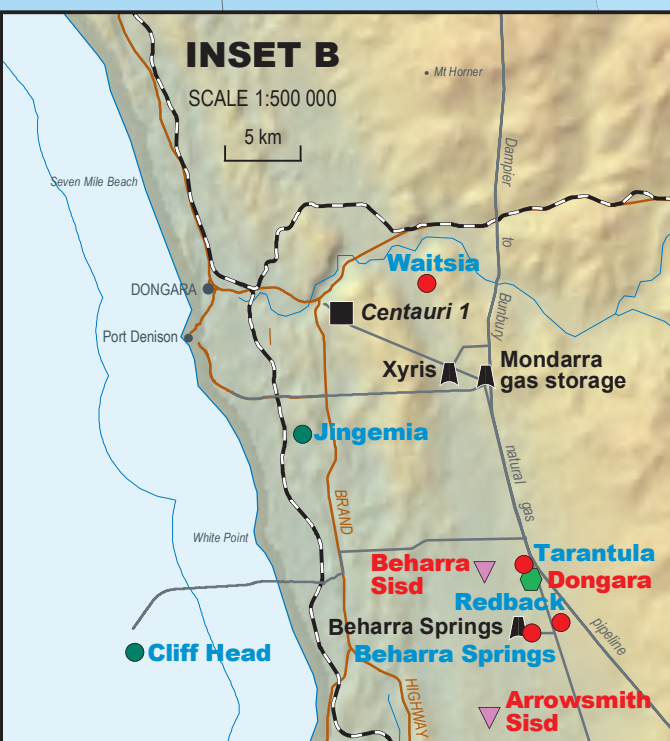


Resource projects currently under construction are in green text  
Planned mining and petroleum projects with at least a pre-feasibility study (or equivalent) completed are in red text  
Principal resource projects recently placed on care and maintenance, or shut in are in purple text



- | MINERAL SYMBOLS              |  | COMMON CODES                    |  |
|------------------------------|--|---------------------------------|--|
| ☆ Precious mineral           |  | Ag.....Silver                   |  |
| ○ Dmsd (or as shown)         |  | Au.....Gold                     |  |
| ◆ Precious metal             |  | Cu.....Copper                   |  |
| ○ Ho (or as shown)           |  | D.....Diamond                   |  |
| ◆ Steel alloy metal          |  | Fe.....Iron                     |  |
| ○ N (or as shown)            |  | G.....Gypsum                    |  |
| ◆ Specialty metal            |  | Gr.....Graphite                 |  |
| ○ Tz (or as shown)           |  | Gr.....Garnet                   |  |
| ▲ Base metal                 |  | HPA.....High purity alumina     |  |
| (as shown)                   |  | K.....Potassium                 |  |
| ○ Fe (or as shown)           |  | Kln.....Kaolin                  |  |
| ◆ Bauxite                    |  | L.....Lithium                   |  |
| ○ Bauxite                    |  | LNG.....Liquefied natural gas   |  |
| ◆ Oak or lignite             |  | LPG.....Liquefied petroleum gas |  |
| ○ Uranium                    |  | Mag.....Magnetite               |  |
| ◆ Industrial mineral         |  | Mn.....Manganese                |  |
| (as shown)                   |  | Ni.....Nickel                   |  |
| ○ Lead                       |  | Pb.....Lead                     |  |
| ◆ Petroleum                  |  | Pt.....Platinum                 |  |
| (as shown)                   |  | REE.....Rare earth elements     |  |
| ○ Gas                        |  | Sid.....Silica sand             |  |
| ◆ Oil                        |  | Sn.....Tin                      |  |
| ○ Oil and gas                |  | Ta.....Tantalum                 |  |
|                              |  | Ti.....Titanium                 |  |
|                              |  | Tlc.....Talc                    |  |
|                              |  | V.....Vanadium                  |  |
|                              |  | W.....Tungsten                  |  |
|                              |  | Zn.....Zinc                     |  |
|                              |  | Zr.....Zirconium                |  |
| INFRASTRUCTURE SYMBOLS       |  |                                 |  |
| ○ Mixed processing plant     |  |                                 |  |
| ◆ Petroleum processing plant |  |                                 |  |

- 
- The map displays the coastal city of Perth, Western Australia. Major roads are shown as solid orange lines, including the Fremantle road, the coast road, and the road to the south. Railways are indicated by black lines with cross-ticks, with a proposed line shown in red. Oil gas pipelines are marked with blue lines, and city boundaries are outlined in black. The population is represented by black dots, with a concentration in the central urban area. The map also shows the coastline, the Indian Ocean, and the Swan River. A legend on the right side identifies the symbols used: a solid orange line for Major road, a black line with cross-ticks for Railway, a red line with cross-ticks for Railway proposed, a blue line for Oil gas pipeline, a blue line with cross-ticks for Oil gas pipeline proposed, a black outline for City, a black dot for Townsite, a black dot for population 1000-15000, a black dot for population 1000-10000, a black dot for less than 1000, a black outline for Homestead, a black outline for Aboriginal community, a black outline for Locality, a blue line for Watercourse, predominantly ephemeral, a blue line for Lake, a blue line for Paludic drainage, inactive or rarely active, and a blue line for Bathymetric contour, metres. A scale bar at the bottom indicates distances from 0 to 20 km. A north arrow is located in the top right corner.
- Major road
- Fremantle road
- Track
- Railway operating
- Railway proposed
- Oil gas pipeline, operating
- Oil gas pipeline, proposed
- City
- Townsite
- population 10000-15000
- 1000-10000
- less than 1000
- Homestead
- Aboriginal community
- Locality
- Watercourse, predominantly ephemeral
- Lake
- Paludic drainage, inactive or rarely active
- Bathymetric contour, metres
- PERTH
- WARDLUNDIA  
● CARPENTARIA  
● MURINA  
● CHORAN  
● PERCEPULCHRA
- 0 10 20 km



Government of Western Australia  
Department of Mines, Industry Regulation  
and Safety

Geological Survey of  
Western Australia

Compiled by SN Sargent, NL Wyche, C D'Ercole, T Pal, SI Murray and F Irimies 202

Cartography by Mapping Section, Geoscience and Titles Information Branch  
Information on mineral projects held in MINEDEX database, DMRS, October 2021  
Information on Principle Resource Projects in 2020-21 is available at

Information on petroleum projects in Western Australia (onshore and in State-controlled waters) is held in WAPIMS database, DMIRS, October 2021  
Field data for offshore Commonwealth-controlled waters is up-to-date as of October 2021

enquiries for the latest information on projects in offshore waters should be addressed to National Offshore Petroleum Titles Administrator (NOPTA) at [info@nopota.gov.au](mailto:info@nopota.gov.au).  
Relief shading by GSWA using Shuttle Radar Topography Mission (SRTM) data from NASA <<http://gl.jpl.nasa.gov/>>, processed by CIAT <<http://glisweb.ciat.cgiar.org/>>

Topography from Landgate, 2019  
For more information see online databases  
MINEDEX, WAPINS and GeoVIEW.WA at [www.dmrp.wa.gov.au](http://www.dmrp.wa.gov.au)  
Printed by Quality Press, Welshpool, Western Australia

The recommended reference for this map is:  
Sergeant, SN, Wyche, NL, D'Ercole, C, Pol, T, Murray, SI and Irmis, F 2021,  
Major Resource Projects, Western Australia — 2021 (1:3 000 000 scale):  
Geological Survey of Western Australia.

Published by the Geological Survey of Western Australia  
This map is published in digital format (PDF) and is available online

Copies are available from:  
Information Centre  
Department of Mines, Industry Regulation and Safety  
100 Plain Street

East Perth, Western Australia 6004  
Phone: +61 8 9222 3459  
Email: [geological.survey@dmirs.wa.gov.au](mailto:geological.survey@dmirs.wa.gov.au)  
Website: [www.dmirs.wa.gov.au/gswa](http://www.dmirs.wa.gov.au/gswa)

This product was produced using information from various sources and Safety (DMRS) and the State cannot guarantee the accuracy. Neither the department nor the State of Western Australia nor any responsible or liable for any loss, damage or injury arising from the



With the exception of the State of Western Australia's coat of arms, this image is provided under a Creative Commons Attribution 4.0 license <http://creativecommons.org/licenses/by/4.0/legalcode>

