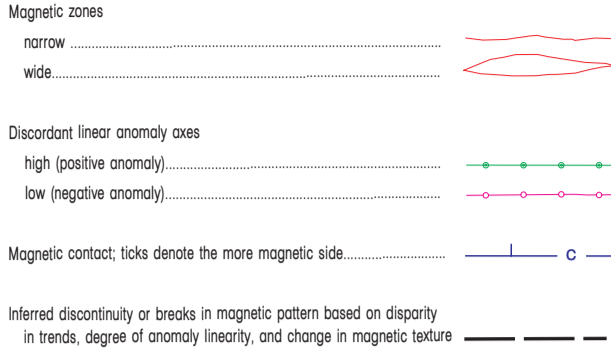
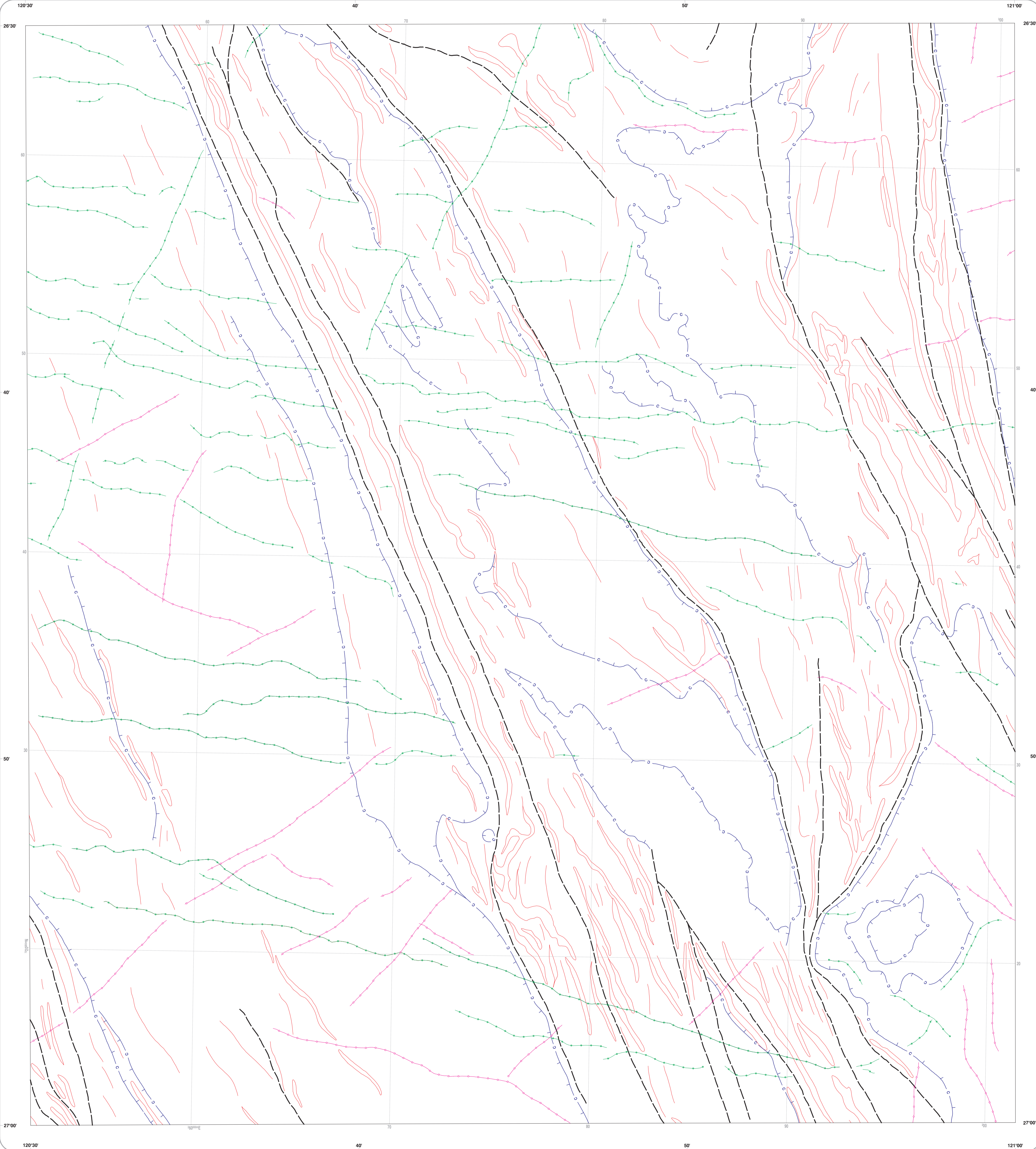


LAKE VIOLET  
GEOLOGICAL SURVEY OF WESTERN AUSTRALIA

1 : 100 000 AEROMAGNETIC FEATURES

SHEET 3044



This compilation of aeromagnetic features is based on airborne geophysical data acquired under the National Geoscience Mapping Accord by the Australian Geological Survey Organisation (AGSO), Commonwealth Department of Primary Industries and Energy. The interpretation is based on data presented as 1:100 000 scale profiles, contours and images of total magnetic intensity, and profiles and images of the first vertical derivative.

This map is not intended to represent a geological interpretation of aeromagnetic features.

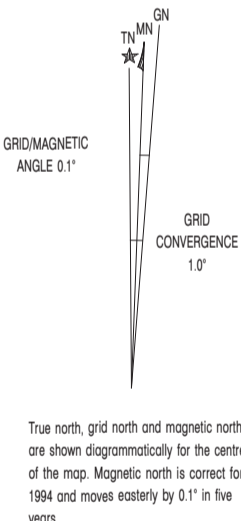
SURVEY SPECIFICATIONS

Flown by: Aerodata Holdings Ltd (World Geoscience Corporation Ltd)  
Date flown: 1992-1993  
Line spacing: 400 m  
Line direction: 090-270 degrees  
Terrain clearance: 60 m above ground level  
Sampling interval: 12 m  
Instrument: Cs vapour magnetometer  
Data acquisition and reduction: Aerodata Holdings Ltd (World Geoscience Corporation Ltd)  
IGRF removed: 1990



SHEET INDEX

JANIO 2547	THREE HILLS 2547	BARBARA 2547	PARADISE 2547	MICHAEL 2547	BUCKLEY 2547	MICHAEL 2547	STANLEY 2547	BARBARA 2547
BRUNN 2548	SG 50-8 COOLBURN 2548	THOMAS 2548	HERBERT 2548	SG 51-5 WHITE PEAK 2548	WHITE PEAK 2548	BARRETT 2548	SG 51-6 SILVER 2548	COOLBURN 2548
CLUNDAIRY 2549	WOLLOOLAH 2549	MOUNT BATTLE 2549	CHIFF 2549	MELBOURNE 2549	BALMORAL 2549	WOLLOOLAH 2549	BUCKLEY 2549	CAMPBELL 2549
CLUNDAIRY 2549	SG 50-13 WOLLOOLAH 2549	HERBERT 2549	MELBOURNE 2549	SG 51-5 WHITE PEAK 2549	WHITE PEAK 2549	BARRETT 2549	SG 51-6 SILVER 2549	COOLBURN 2549
CLUNDAIRY 2549	SG 50-13 WOLLOOLAH 2549	HERBERT 2549	MELBOURNE 2549	SG 51-5 WHITE PEAK 2549	WHITE PEAK 2549	BARRETT 2549	SG 51-6 SILVER 2549	COOLBURN 2549
CLUNDAIRY 2549	SG 50-13 WOLLOOLAH 2549	HERBERT 2549	MELBOURNE 2549	SG 51-5 WHITE PEAK 2549	WHITE PEAK 2549	BARRETT 2549	SG 51-6 SILVER 2549	COOLBURN 2549
CLUNDAIRY 2549	SG 50-13 WOLLOOLAH 2549	HERBERT 2549	MELBOURNE 2549	SG 51-5 WHITE PEAK 2549	WHITE PEAK 2549	BARRETT 2549	SG 51-6 SILVER 2549	COOLBURN 2549
CLUNDAIRY 2549	SG 50-13 WOLLOOLAH 2549	HERBERT 2549	MELBOURNE 2549	SG 51-5 WHITE PEAK 2549	WHITE PEAK 2549	BARRETT 2549	SG 51-6 SILVER 2549	COOLBURN 2549
CLUNDAIRY 2549	SG 50-13 WOLLOOLAH 2549	HERBERT 2549	MELBOURNE 2549	SG 51-5 WHITE PEAK 2549	WHITE PEAK 2549	BARRETT 2549	SG 51-6 SILVER 2549	COOLBURN 2549
CLUNDAIRY 2549	SG 50-13 WOLLOOLAH 2549	HERBERT 2549	MELBOURNE 2549	SG 51-5 WHITE PEAK 2549	WHITE PEAK 2549	BARRETT 2549	SG 51-6 SILVER 2549	COOLBURN 2549



DEPARTMENT OF MINERALS AND ENERGY  
HON. GEORGE CARL, J.P., M.L.C.  
MINISTER FOR MINES  
K. R. PERRY, DIRECTOR GENERAL



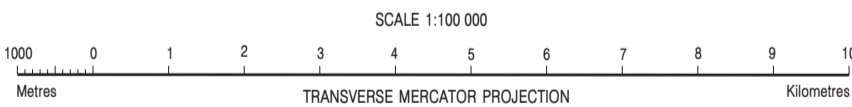
AGSO  
AUSTRALIAN GEOLOGICAL SURVEY ORGANISATION



PETER GILL  
DIRECTOR, GEOLOGICAL SURVEY  
OF WESTERN AUSTRALIA

NGMA

PRODUCT OF THE NATIONAL  
GEOSCIENCE MAPPING ACCORD



Aeromagnetic interpretation by World Geoscience Corporation Ltd  
Geophysical Project Manager, S.H.D. Howard  
Aeromagnetic data capture by Codrington  
Edited by C. Strong and G. Loan  
Cartography by S. Collopy

Published by the Geological Survey of Western Australia. Copies available from the Mining Information Centre, Department of Minerals and Energy, 100 Plain Street, East Perth, WA, 6004. Phone (09) 222 3469, Fax (09) 222 3444.

This map is also available in digital form.

Persons who purchase this information in any form may only reproduce it for their own use and not for publication or resale in any form, except with the written permission of the Director, Geological Survey of Western Australia.

AEROMAGNETIC FEATURES  
LAKE VIOLET  
SHEET 3044 FIRST EDITION 1996

© Western Australia