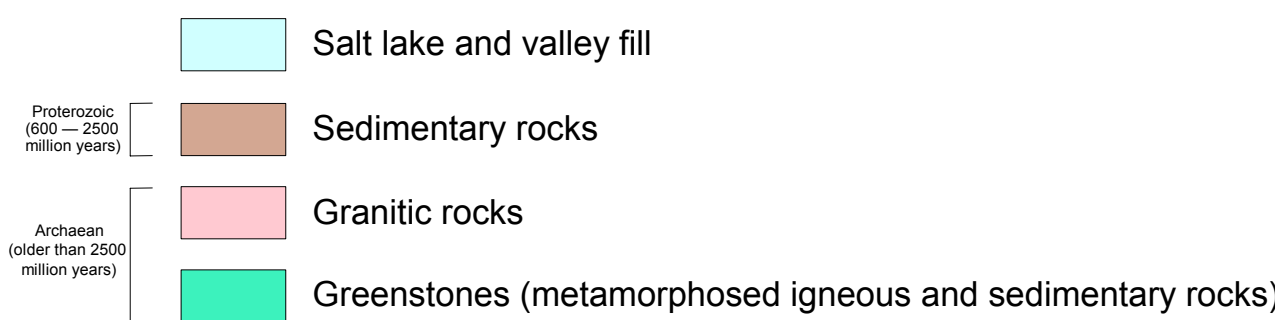


# RESOURCE POTENTIAL FOR LAND USE PLANNING

## EASTERN GOLDFIELDS

### Geology



### Mines and deposits

Containing nickel and gold — subdivision based on current known resources

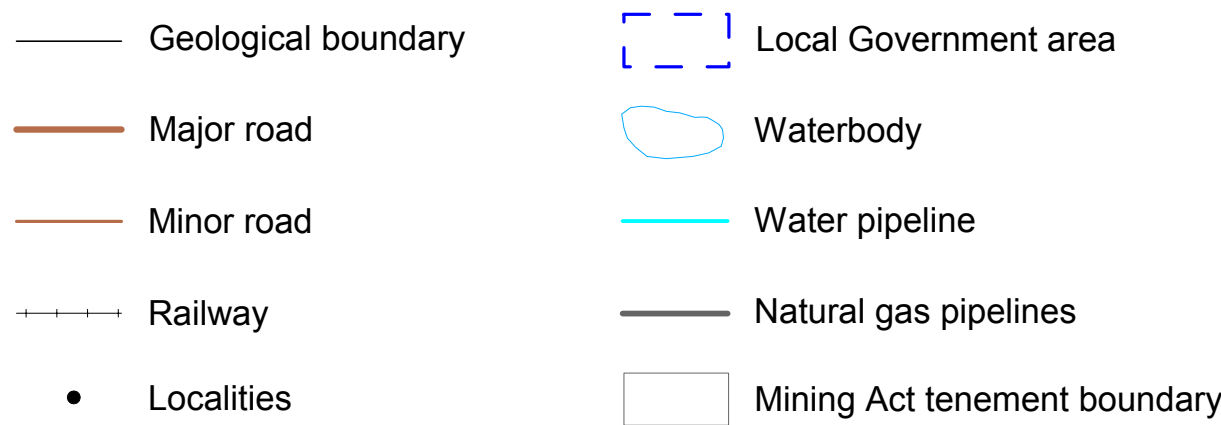


### Containing other commodities

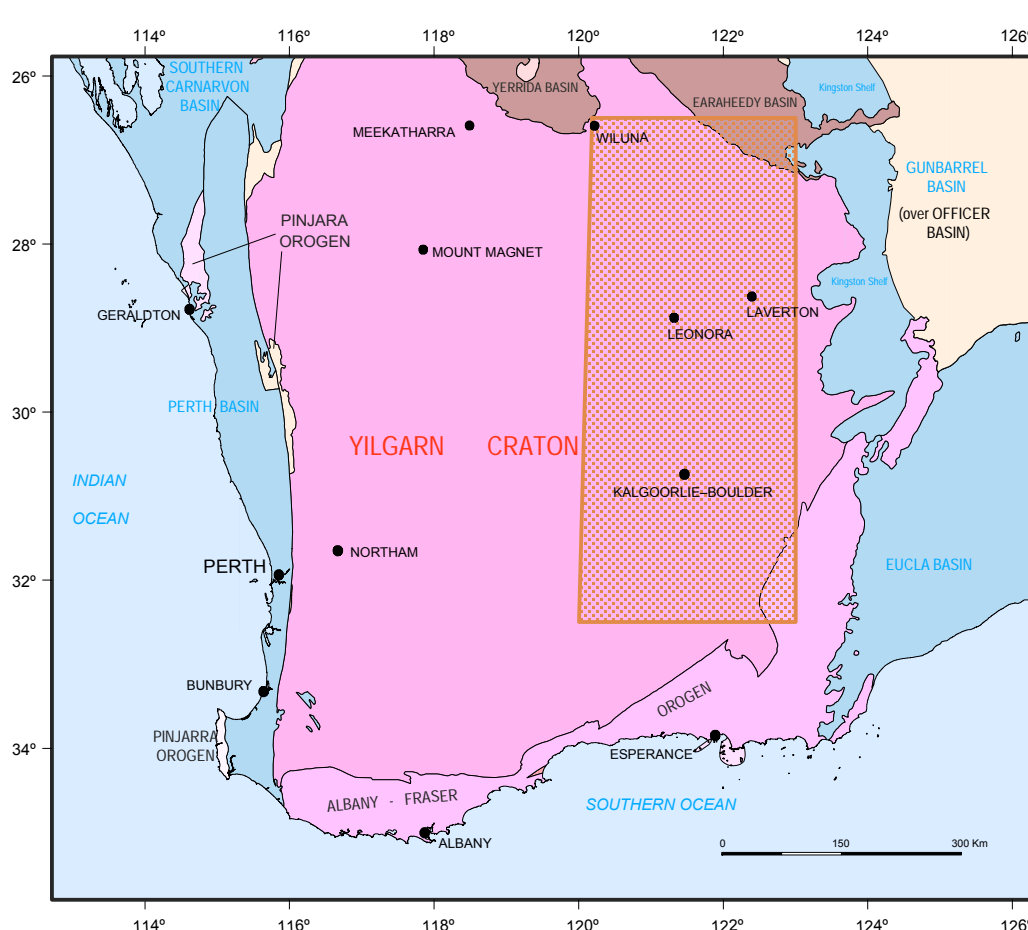
Deposits of various sizes, commodity as indicated

### Historic and abandoned mine sites

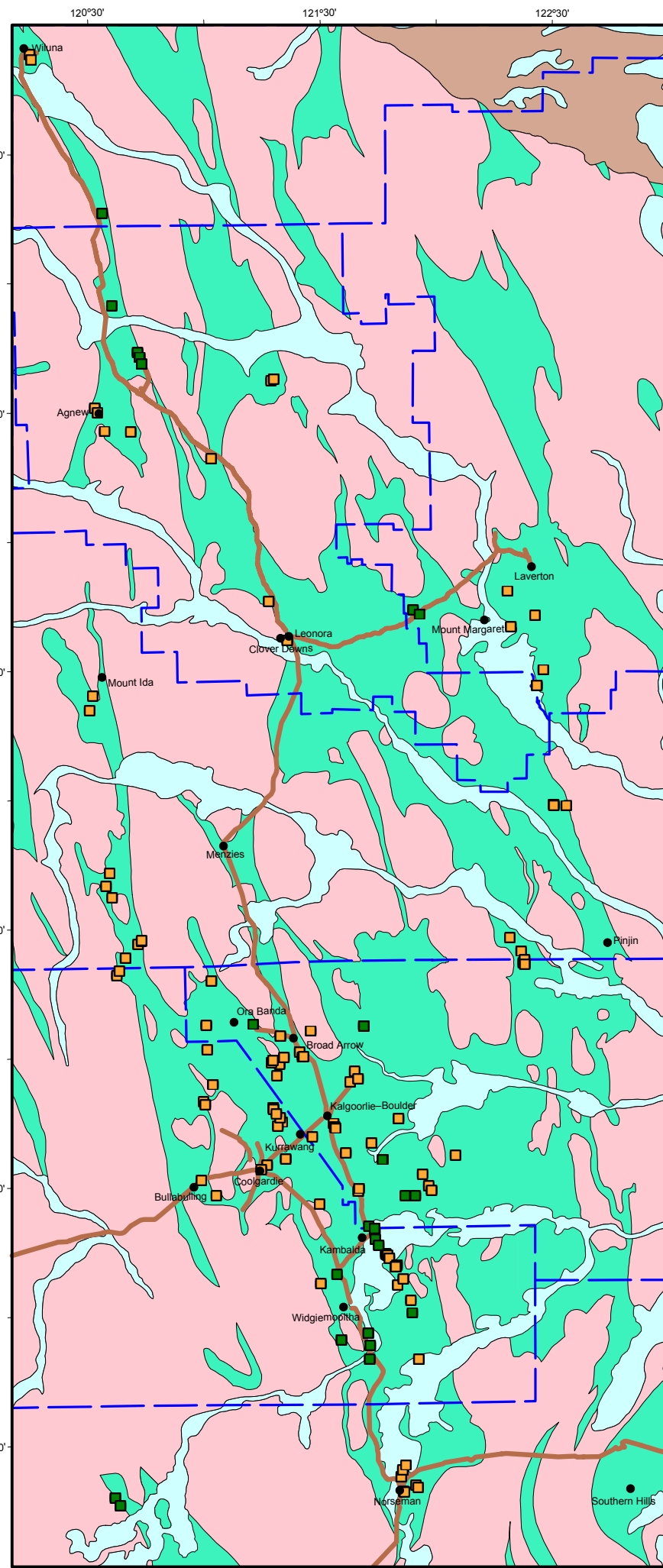
No current known resources, variable historic production; commodity predominantly gold



### LOCALITY MAP



### OPERATING MINES



SHEET INDEX			
120°30' - 120°45'	31°00' - 31°15'	120°45' - 121°00'	31°00' - 31°15'
120°30' - 120°45'	31°15' - 31°30'	120°45' - 121°00'	31°15' - 31°30'
120°30' - 120°45'	31°30' - 31°45'	120°45' - 121°00'	31°30' - 31°45'
120°30' - 120°45'	31°45' - 32°00'	120°45' - 121°00'	31°45' - 32°00'
120°45' - 121°00'	31°00' - 31°15'	121°00' - 121°15'	31°00' - 31°15'
120°45' - 121°00'	31°15' - 31°30'	121°00' - 121°15'	31°15' - 31°30'
120°45' - 121°00'	31°30' - 31°45'	121°00' - 121°15'	31°30' - 31°45'
120°45' - 121°00'	31°45' - 32°00'	121°00' - 121°15'	31°45' - 32°00'
121°00' - 121°15'	31°00' - 31°15'	121°15' - 121°30'	31°00' - 31°15'
121°00' - 121°15'	31°15' - 31°30'	121°15' - 121°30'	31°15' - 31°30'
121°00' - 121°15'	31°30' - 31°45'	121°15' - 121°30'	31°30' - 31°45'
121°00' - 121°15'	31°45' - 32°00'	121°15' - 121°30'	31°45' - 32°00'

DATA DIRECTORY			
Theme	1:500 000 Interpretive base map	1:500 000 Interpretive base map	1:500 000 Interpretive base map
Geology	1:500 000 Interpretive base map	1:500 000 Interpretive base map	1:500 000 Interpretive base map
Mines and mineral deposits	1:500 000 Interpretive base map	1:500 000 Interpretive base map	1:500 000 Interpretive base map
Tenements	1:500 000 Interpretive base map	1:500 000 Interpretive base map	1:500 000 Interpretive base map
Topographic nomenclature	1:500 000 Interpretive base map	1:500 000 Interpretive base map	1:500 000 Interpretive base map
Topography	1:500 000 Interpretive base map	1:500 000 Interpretive base map	1:500 000 Interpretive base map
Geology compiled by	F. J. Vandebrink 1989-2001 and P. B. Flint 1989-2000, modified by F. J. Roberts 2005		
Cartography by	M. Kumar, 2005		
Published by	the Geological Survey of Western Australia		
The recommended reference for this map is:	ROBERTS, F. J., 2005. Eastern Goldfields. Resource potential for land use planning (scale 1:500 000). Western Australia Geological Survey.		
Email	geologicalsurvey@dgir.wa.gov.au		



Scale 1:500 000  
25 000 0 25 50  
Metres Kilometres

UNIVERSAL TRANSVERSE MERCATOR PROJECTION  
Map Grid of Australia Zone 51  
The Map Grid of Australia (MGA) is based on the Geocentric Datum of Australia 1984 (GDA 84).  
GDA positions are compatible within one metre of the datum WGS84 positions.

**EASTERN GOLDFIELDS**  
**RESOURCE POTENTIAL FOR LAND USE PLANNING**  
Version 1.0 — June 2005  
© Western Australia 2005