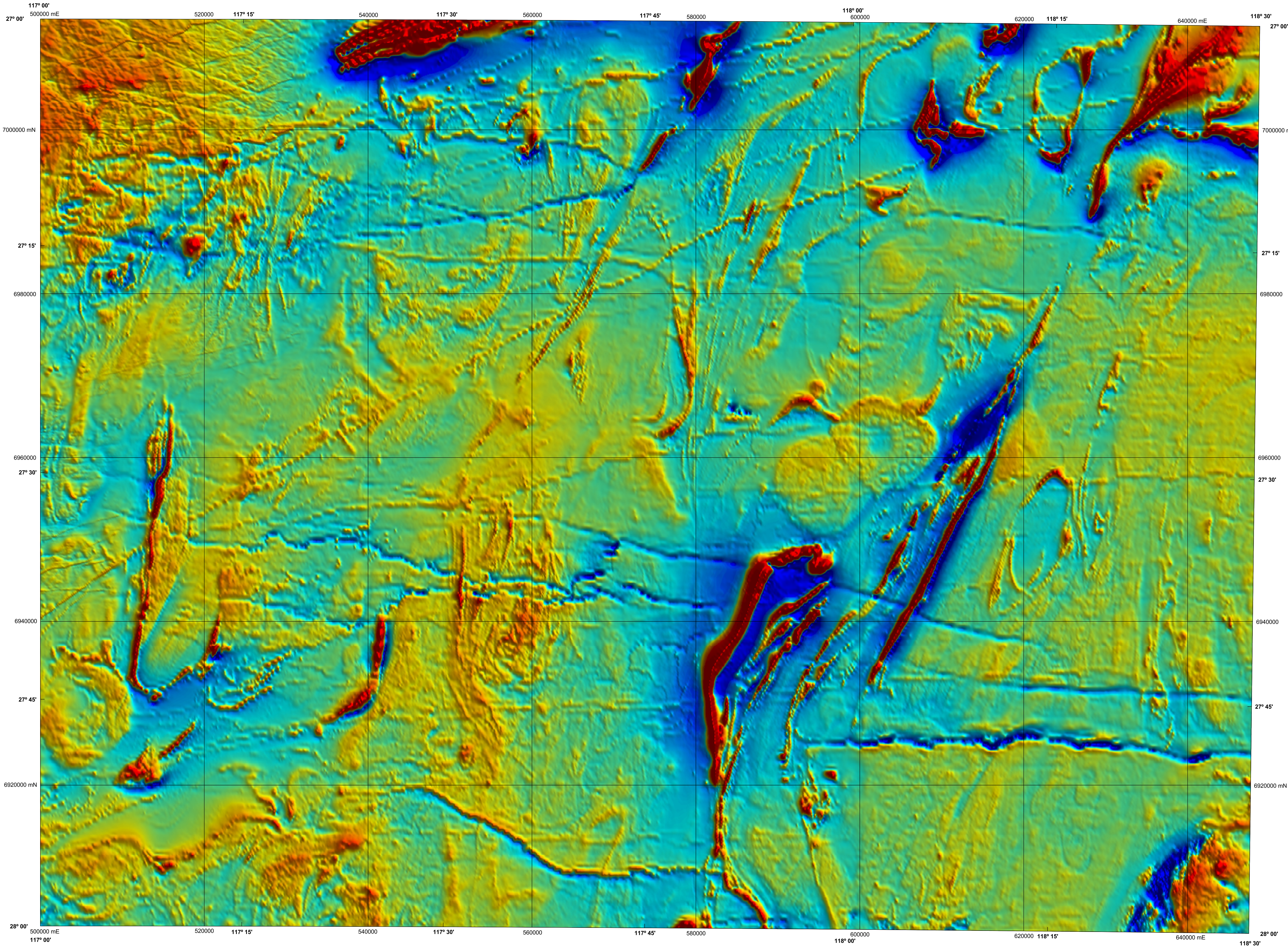


CUE

GEOLOGICAL SURVEY OF WESTERN AUSTRALIA

SHEET SG 50-15

1:250 000 TOTAL MAGNETIC INTENSITY IMAGE



54300
54000
53600
53200
52900
52500
nT

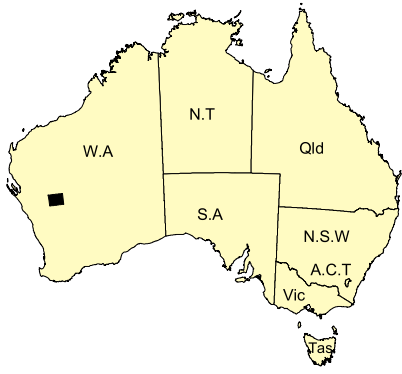
Data acquired in 2004 were merged by Geoscience Australia with private company data, flown in 1996. These data now form part of the National Airborne Geophysical Database.

Published by the Geological Survey of Western Australia. Copies are available from the Information Centre, Department of Industry and Resources, 100 Plain Street, East Perth, WA 6004. Telephone (08) 9222 3459, Fax (08) 9222 3444, www.doir.wa.gov.au

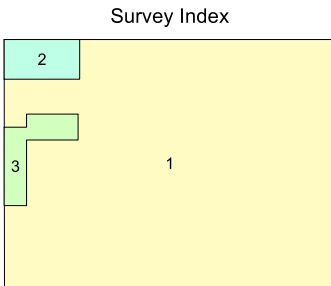
Secondary data processing R. Franklin
Image processing J. H. Watt
Cartography J. Simonetti
Geophysical Project Manager S. H. D. Howard

These data are available in digital form from the Sales Centre, Geoscience Australia, GPO Box 378, Canberra, ACT 2601. Telephone (02) 6249 9966, Fax (02) 6249 9960. Digital data are also available for download from Geoscience Australia, www.geoscience.gov.au/gadds

The recommended reference for this map is:
GEOLOGICAL SURVEY OF WESTERN AUSTRALIA, 2005. Cue, W.A. Sheet SG 50-15: Western Australian Geological Survey, 1:250 000 Total Magnetic Intensity Image.



SHEET INDEX		
81000 SG 50-10	81500 SG 50-11	82000 SG 50-12
81500 SG 50-14	82000 SG 50-15	82500 SG 50-16
83000 SG 50-17	83500 SG 50-18	84000 SG 50-19



The image is compiled from the three surveys that are listed below, the areas covered by each are shown on the survey index. The grid cell size is 80 m.

Survey ID	Survey name	Flight line spacing	Flight line direction	Ground clearance	Contractor	Date	Client
1	Cue/Kirkalocka	400 m	90° – 270°	60 m	UTS	2004	GSWA/GA
2	Kylie Hill, area 1	200 m	0° – 180°	60 m	Kevron	1998	Stockdale Prospecting Ltd
3	Kylie Hill, area 2	200 m	0° – 180°	60 m	Kevron	1998	Stockdale Prospecting Ltd



Department of
Industry and Resources
CUE SPOON, W.A.
MINISTER FOR STATE DEVELOPMENT

SAU LAMERICK
DIRECTOR GENERAL



Geological Survey of
Western Australia
TM OPRIN
DIRECTOR



NGA
PRODUCT OF THE NATIONAL
GEOSCIENCE AGREEMENT

SCALE 1:250 000
5000 0 5 10 15 20 25 30
Metres Kilometres

UNIVERSAL TRANSVERSE MERCATOR PROJECTION
HORIZONTAL DATUM: GEOCENTRIC DATUM OF AUSTRALIA
Grid lines indicate 20 000 metre interval of the Map Grid Australia Zone 50
GDA
The Map Grid Australia (MGA) is based on the Geocentric Datum of Australia 1994 (GDA94).
GDA94 positions are compatible within one metre of the datum WGS84 positions.

GEOLOGICAL SURVEY OF WESTERN AUSTRALIA
TOTAL MAGNETIC INTENSITY IMAGE
CUE
SHEET SG 50-15
First Edition 2005
© Western Australia 2005

WARNING: Inks are water soluble and will fade with prolonged exposure to light