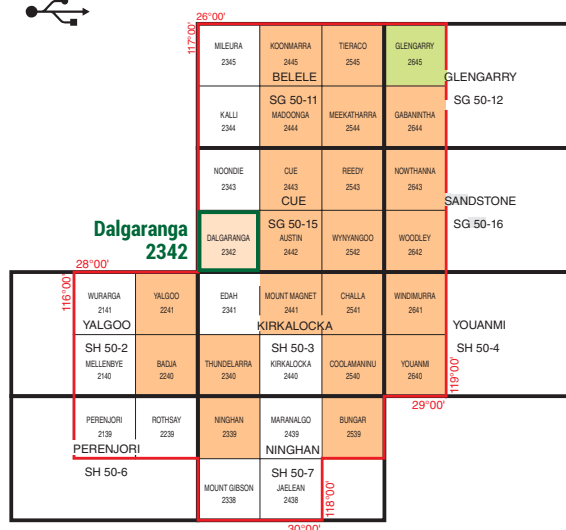


ISBN 978-1-74168-854-2  
ISSN 1834-2337

2019



### Data layers:

- Project area
- 1:100 000 regolith–landform geology
- 1:100 000 surface geology
- 1:100 000 interpreted bedrock geology
- 1:500 000 interpreted bedrock geology
- Earlier mapping not merged into data layers

## Dalgaranga 2342 1:100 000 digital layer, 2020

Enquiries to [gsd.data@dmirs.wa.gov.au](mailto:gsd.data@dmirs.wa.gov.au); Phone: +61 8 9222 3459

Free (online): Go to the Data and Software Centre (<https://dasc.dmirs.wa.gov.au>) > Statewide Spatial

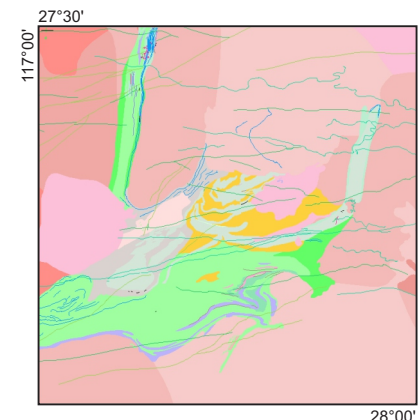
Datasets > Geology > 1:100 000 State interpreted bedrock geology of Western Australia

1:500 000 Interpreted bedrock geology of Western Australia

## Dalgaranga 2342 1:100 000 digital layer, 2020

This spatial dataset is also available within the following digital data layers:

- 1:100 000 State interpreted bedrock geology of Western Australia
- 1:500 000 Interpreted bedrock geology of Western Australia



<https://dasc.dmirs.wa.gov.au/>

### Statewide spatial datasets - [GDA1994]

#### Geology

#### 1:100 000 State interpreted bedrock geology of Western Australia - [GDA1994]

Last Updated	Size	File Format	
03/06/2022	123.63 MB	ESRI Shape File	<a href="#">Download</a>
03/06/2022	68.28 MB	ESRI File Geodatabase	<a href="#">Download</a>
03/06/2022	58.48 MB	MapInfo TAB	<a href="#">Download</a>

#### 1:500 000 Interpreted bedrock geology of Western Australia - [GDA1994]

Last Updated	Size	File Format	
05/06/2022	75.62 MB	ESRI File Geodatabase (with QGIS file)	<a href="#">Download</a>
05/06/2022	76.71 MB	ESRI Shape File (with QGIS file)	<a href="#">Download</a>
05/06/2022	82.89 MB	MapInfo TAB	<a href="#">Download</a>



Government of Western Australia  
Department of Mines, Industry Regulation  
and Safety

Geological Survey of  
Western Australia

