

1:10 000 000 tectonic units of Western Australia, 2016

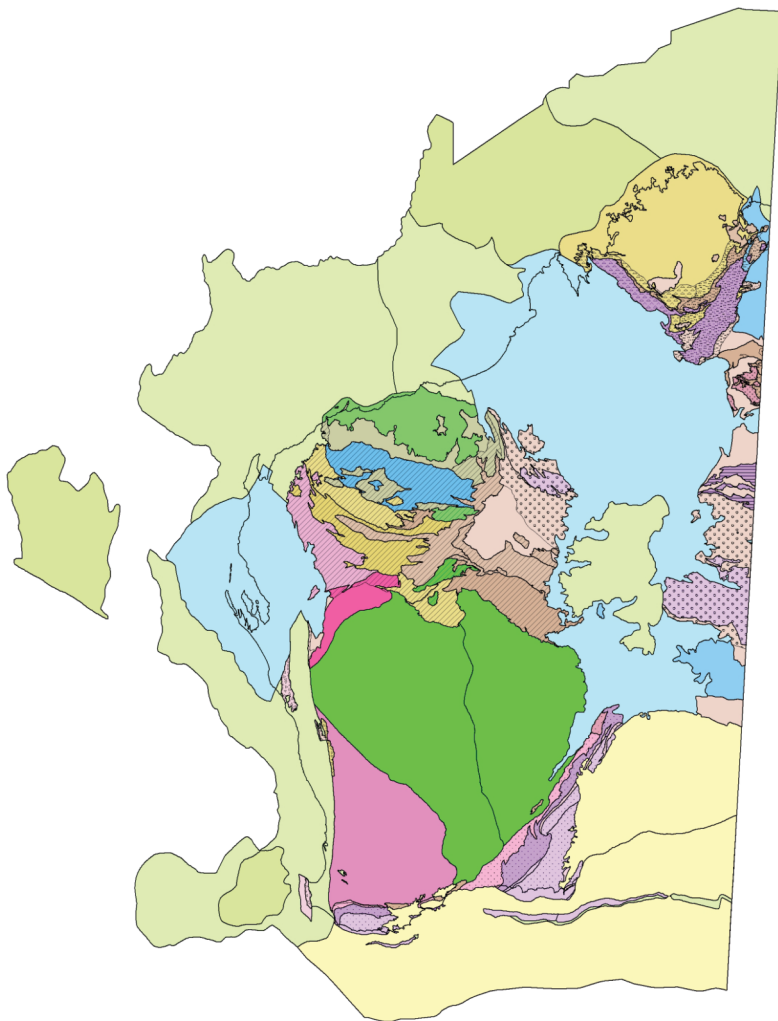
The digital 1:10 000 000 tectonic units of Western Australia, 2016 has been compiled by rolling up and simplifying from the digital 1:500 000 tectonic units of Western Australia, 2015 for optimal display at 1:10 000 000 scale.

For the offshore component, the map uses data and divisions from the Geoscience Australia Australian Geological Provinces GIS dataset, with polygons adjusted to match seamlessly into the onshore tectonic elements.

The nomenclature and hierarchy for the tectonic units are based on the GSWA Explanatory Notes System (February 2016). This digital layer is designed to outline tectonic units at the highest levels within the tectonic hierarchy; that is, to delineate the areal extent of cratons, orogens, and basins.

Magmatic units defining large igneous provinces (LIPs) are represented on a companion layer, the 1:10 000 000 large igneous provinces of Western Australia, 2016.

Polygons on this map represent the present-day area of tectonic units, without inference on their original extent, although some units are extended below younger cover where constraints are known. However, the extent of Proterozoic orogens (patterns) is not shown under cover or in offshore areas.



1:10 000 000 tectonic units of Western Australia, 2016

Enquiries to Email: gsd.dda@dmp.wa.gov.au; Phone: +61 8 9222 3459; Fax: +61 8 9222 3444.

Free (online): Go to the Data and Software Centre (www.dmp.wa.gov.au/datacentre) > Statewide Spatial Datasets > Geology > 1:10 000 000 tectonic units, 2016