

COMPANY PROJECTS WITH SURFACE
GEOCHEMISTRY DATA IN OPEN FILE
REPORTS (at January 1995)

PROJECTS COMMENCED BETWEEN 1966 AND 1985

Project Commencement Period
(Various colour shades used for ease of project indentification)

	1966 - 1970
	1971 - 1975
	1976 - 1980
	1981 - 1985
	1986 - 1990
	1991 - 1994

See PLATE 4

Principal road

Minor road

Track

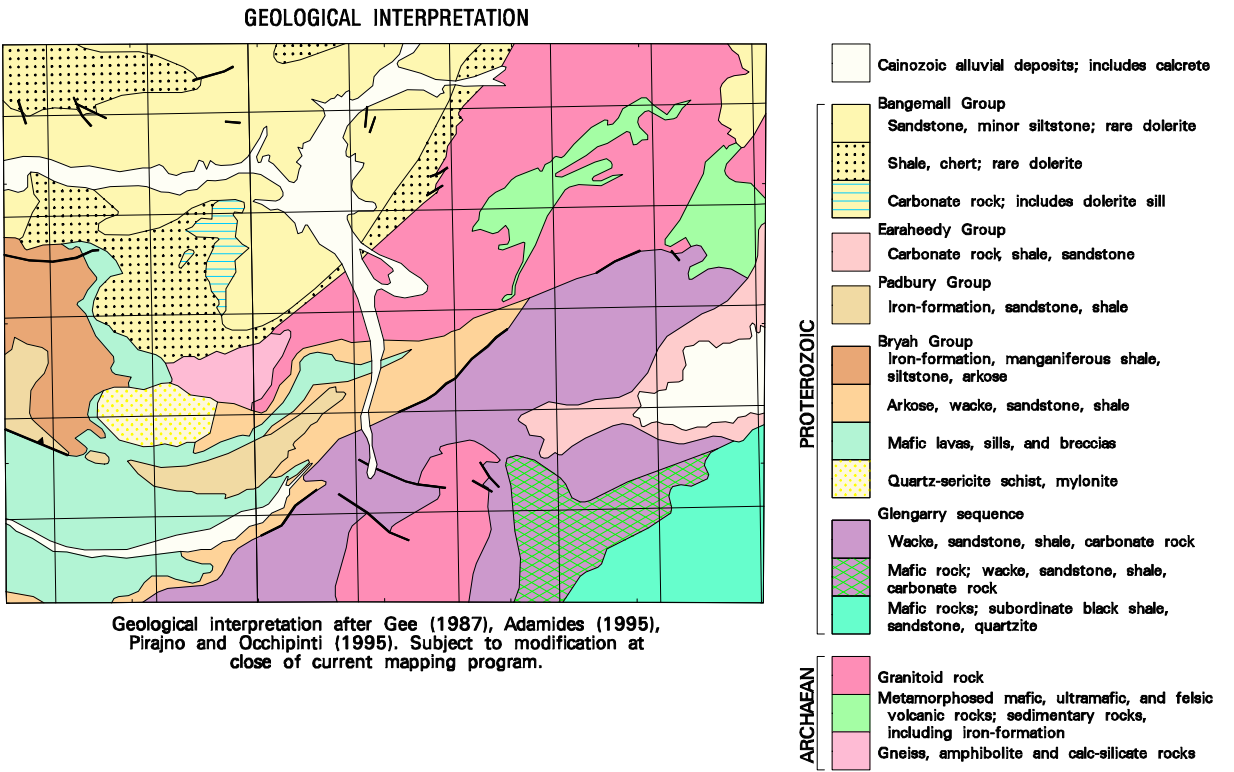
Watercourse and lake boundaries

Mt Leake Locality

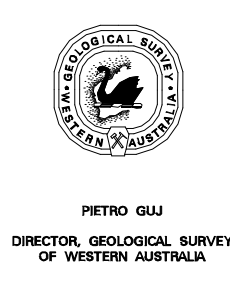
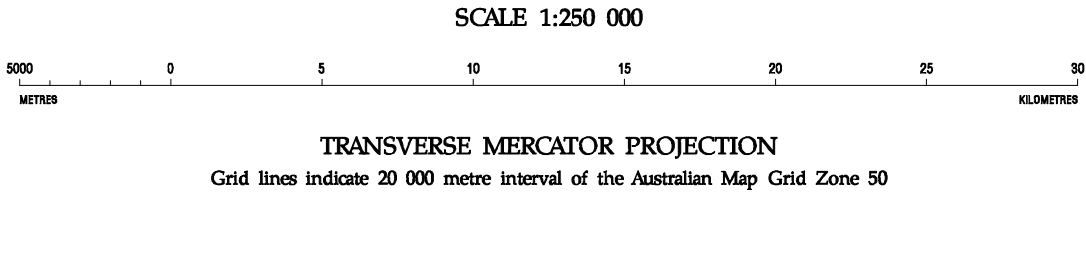
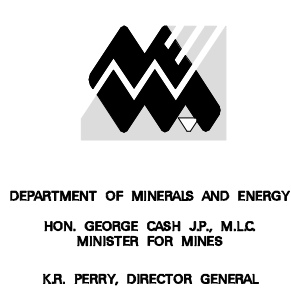
Bryah Homestead

Thaduna Significant mine

Number within project area is a database ID number (See Appendix 3)



Edited by: C. Strong and G. Loan
Cartography by: K. Smith, G. Jose and D. Ladbrook
Topographic information supplied by the Australian Surveying and Land Information Group, and roads modified from geological field survey (1994)
This map was compiled digitally from the geochemical database held by Geological Survey Western Australia and stored in the ORACLE database management system, compiled and produced using a Geographic Information System, Arc/info, and available in digital form
Copies of this map, or extracts from the database, are available from the Department of Minerals and Energy, 100 Plain Street, East Perth, 8004



Compiled by: J.A. Faulkner 1995
Compiled from open file company reports held by Geological Survey of Western Australia
The recommended reference for this map is: FAULKNER, J.A., 1995, Peak Hill, W.A. -- Company projects with surface geochemistry data in open file reports (at January 1995) projects commenced between 1966 and 1985: Western Australia Geological Survey, 1:250 000 Regolith Geochemistry Series
Some tenement boundaries have been generalized for the purpose of this map. Refer to specific project reports for precise boundary descriptions

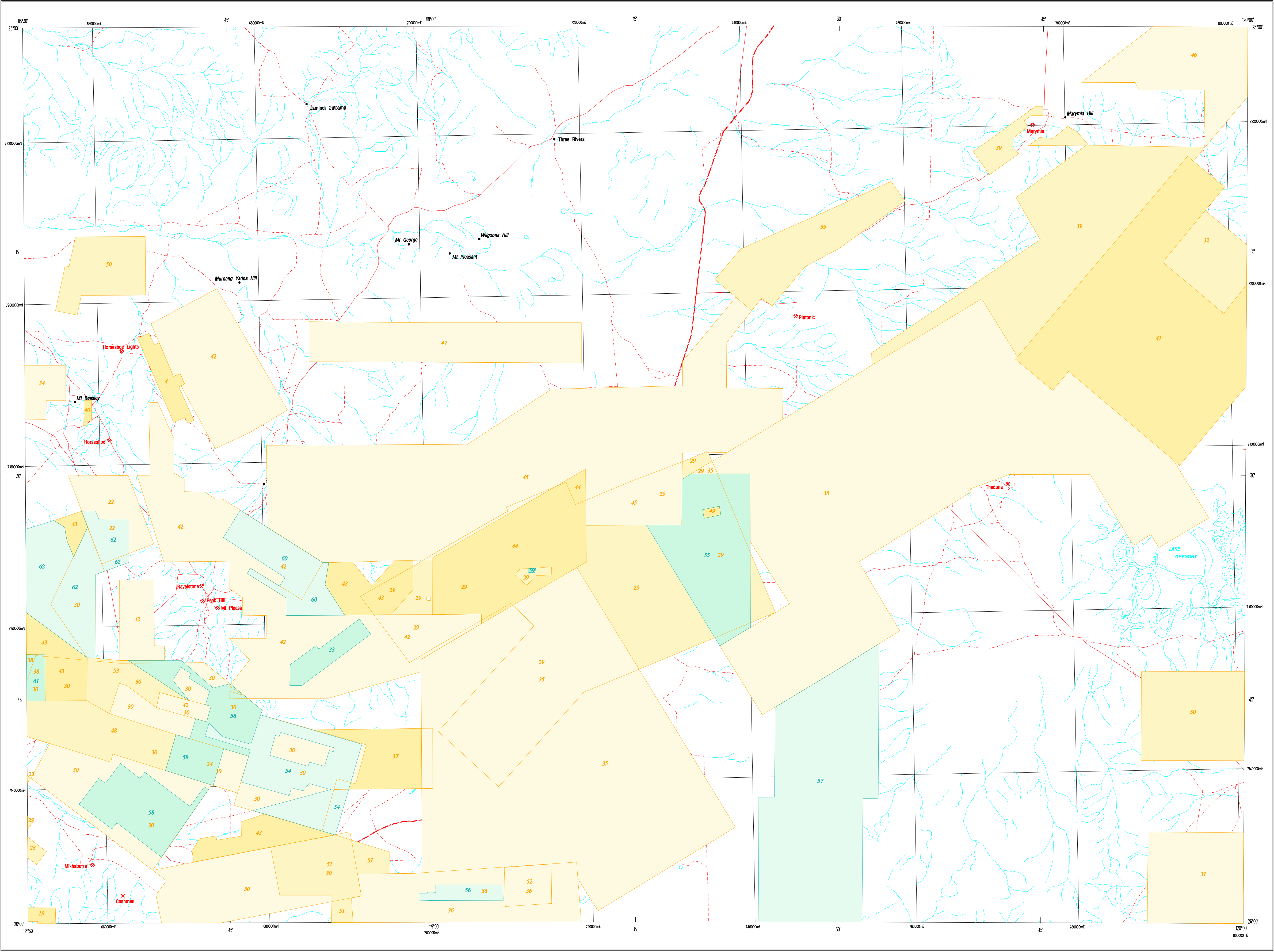
COMPANY PROJECTS WITH SURFACE
GEOCHEMISTRY DATA IN OPEN FILE
REPORTS (at January 1995)

PROJECTS COMMENCED BETWEEN 1966 AND 1985

REGOLITH GEOCHEMISTRY SERIES
PEAK HILL

SHEET SG 50-8
FIRST EDITION 1995
© Western Australia

WARNING: Inks are water soluble and will fade with prolonged exposure to light

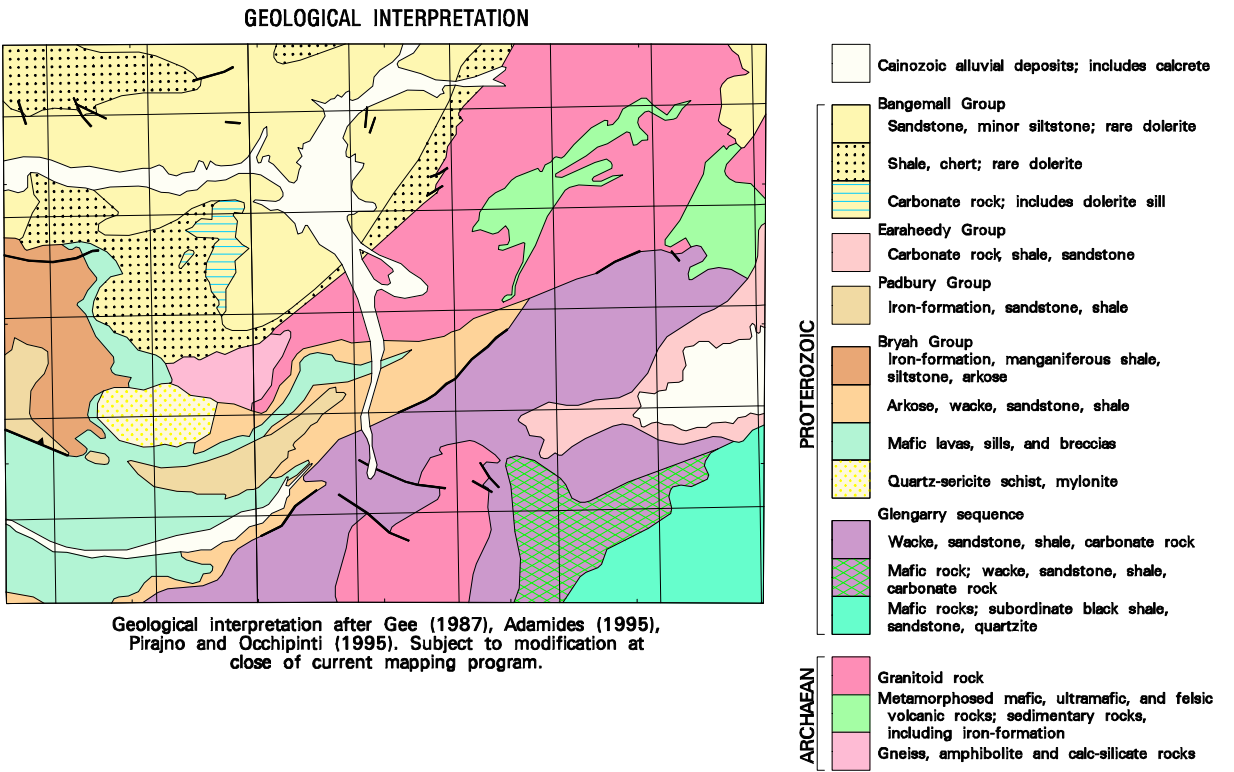


COMPANY PROJECTS WITH SURFACE
GEOCHEMISTRY DATA IN OPEN FILE
REPORTS (at January 1995)
PROJECTS COMMENCED BETWEEN 1986 AND 1994

Project Commencement Period
(Various colour shades used for ease of project identification)

1966 - 1970	See PLATE 3	Principal road
1971 - 1975		Minor road
1976 - 1980		Track
1981 - 1985		Watercourse and lake boundaries
1986 - 1990		Locality
1991 - 1994		Homestead
		Significant mine

Number within project area is a database ID number (See Appendix 3)



SHEET INDEX

MOUNT EBERTON SG 50-3	COLLIER SG 50-4	BULLEN SG 51-1
ROBINSON RANGE SG 50-7	PEAK HILL SG 50-8	NABBERU SG 51-5
BELELE SG 50-11	GLENGARRY SG 50-12	WILUNA SG 51-9

**INDEX TO 1:100 000 MAP SHEETS
WITHIN PEAK HILL 1:250 000**

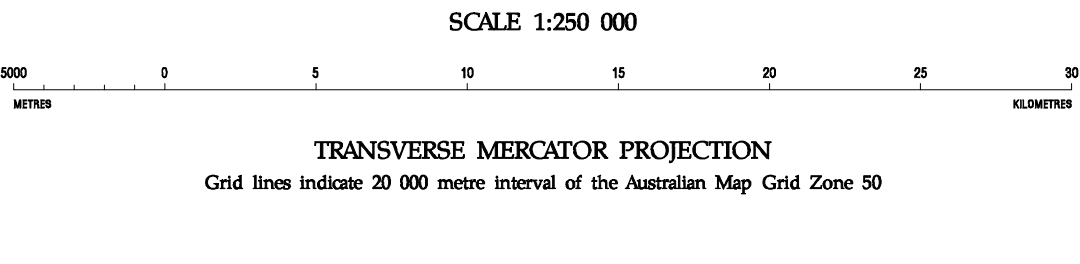
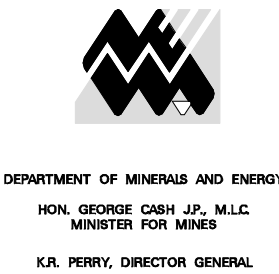
JAMUDI 2847	THREE RIVERS 2747	MARYMIA 2847
BRYAH 2846	DOOLGUNNA 2746	THADUNA 2846

COMPANY PROJECTS WITH SURFACE
GEOCHEMISTRY DATA IN OPEN FILE
REPORTS (at January 1995)
PROJECTS COMMENCED BETWEEN 1986 AND 1994

REGOLITH GEOCHEMISTRY SERIES
PEAK HILL

SHEET SG 50-8
FIRST EDITION 1995
© Western Australia

Edited by: C. Strong and G. Loan
Cartography by: K. Smith, G. Jose and D. Ledbrook
Topographic information supplied by the Australian Surveying and Land Information Group, and roads modified from geological field survey (1994)
This map was compiled digitally from the geochemical database held by Geological Survey Western Australia and stored in the ORACLE database management system; compiled and produced using a Geographic Information System, Arc/info, and available in digital form
Copies of this map, or extracts from the database, are available from the Department of Minerals and Energy, 100 Plain Street, East Perth, 6004



Compiled by: J.A. Faulkner 1995
Compiled from open file company reports held by Geological Survey of Western Australia
The recommended reference for this map is: FAULKNER, J.A., 1995, Peak Hill, W.A. -- Company projects with surface geochemistry data in open file reports (at January 1995) projects commenced between 1986 and 1994: Western Australia Geological Survey, 1:250 000 Regolith Geochemistry Series
Some tenement boundaries have been generalized for the purpose of this map. Refer to specific project reports for precise boundary descriptions

WARNING: Inks are water soluble and will fade with prolonged exposure to light