

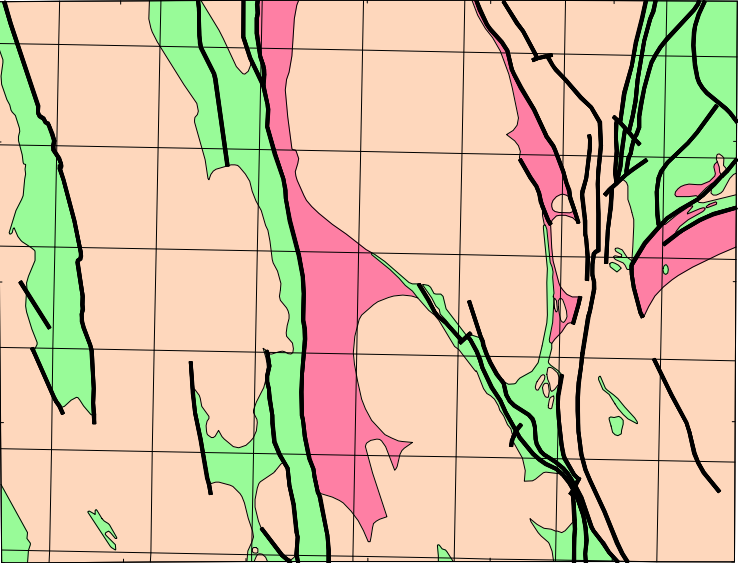
## SAMPLE LOCATIONS

### Sample point references

- 122123 Lake sample
- 122123 Laterite sample
- 122123 Soil sample
- 122123 Stream sample

- Principal road
- Minor road
- Track
- Watercourse and lake boundaries
- Railway
- Locality
- Homestead
- MULLINE Mining locality

### GEOLOGICAL INTERPRETATION



Geological interpretation after W.K. Witt (in prep.) and A.H. Hickman (in prep.)

- Granitoid rock
- Granitoid gneiss and strongly sheared granitoid rock; minor amphibolite
- Volcano-sedimentary greenstone belt
- Major fault

### INDEX TO ADJOINING SHEETS

YUAMMI SH 50-4	LEONORA SH 51-1	LAVERTON SH 51-2
BARLEE SH 50-8	MENZIES SH 51-5	EDMUNDINA SH 51-6
JACKSON SH 50-12	KALGOORLIE SH 51-8	KURNALPI SH 51-10

## SAMPLE LOCATIONS

REGOLITH GEOCHEMISTRY SERIES

## MENZIES

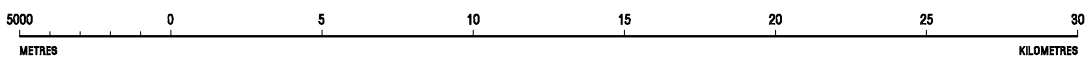
SH 51-5  
FIRST EDITION December 1994  
© Western Australia

Edited by C. Strong, and G. Loan  
Cartography by: A. Rogers and K. Smith of the Cartographic Services Branch, Surveys and Mapping Division, Department of Minerals and Energy, Western Australia  
Topographic information supplied by the Australian Surveying and Land Information Group  
This map compiled digitally from the geochemical database held by Geological Survey Western Australia and stored in the ORACLE database management system. Compiled and produced using a Geographic Information System, ArcInfo, and available in digital form.  
Copies of this map, or extracts from the database, are available from the Department of Minerals and Energy, 100 Plain Street, East Perth, 6004



DEPARTMENT OF MINERALS AND ENERGY  
HON. GEORGE CARR JR. M.L.C.  
MINISTER FOR MINES  
K.R. PERRY, DIRECTOR GENERAL

SCALE 1:250 000



TRANSVERSE MERCATOR PROJECTION  
Grid lines indicate 20 000 metre interval of the Australian Map Grid Zone 51



PETRO. GUJ  
DIRECTOR, GEOLOGICAL SURVEY  
OF WESTERN AUSTRALIA

Sampling by: C. Kojan (GSWA) with assistance from J. Bradley, D. Ellis, B. McGrow and E. Mehrl (Geochimas) 1994  
Total sample sites: 1072; 413 stream sediment, 44 lake sediment, 580 soil, 35 laterite  
Analyst: AMDEL Laboratories. Minimum sample size: 1.5 Kg. Fraction of soil, stream sediment and lake sediment samples analysed: -2mm+0.45mm

WARNING: Inks are water soluble and will fade with prolonged exposure to light