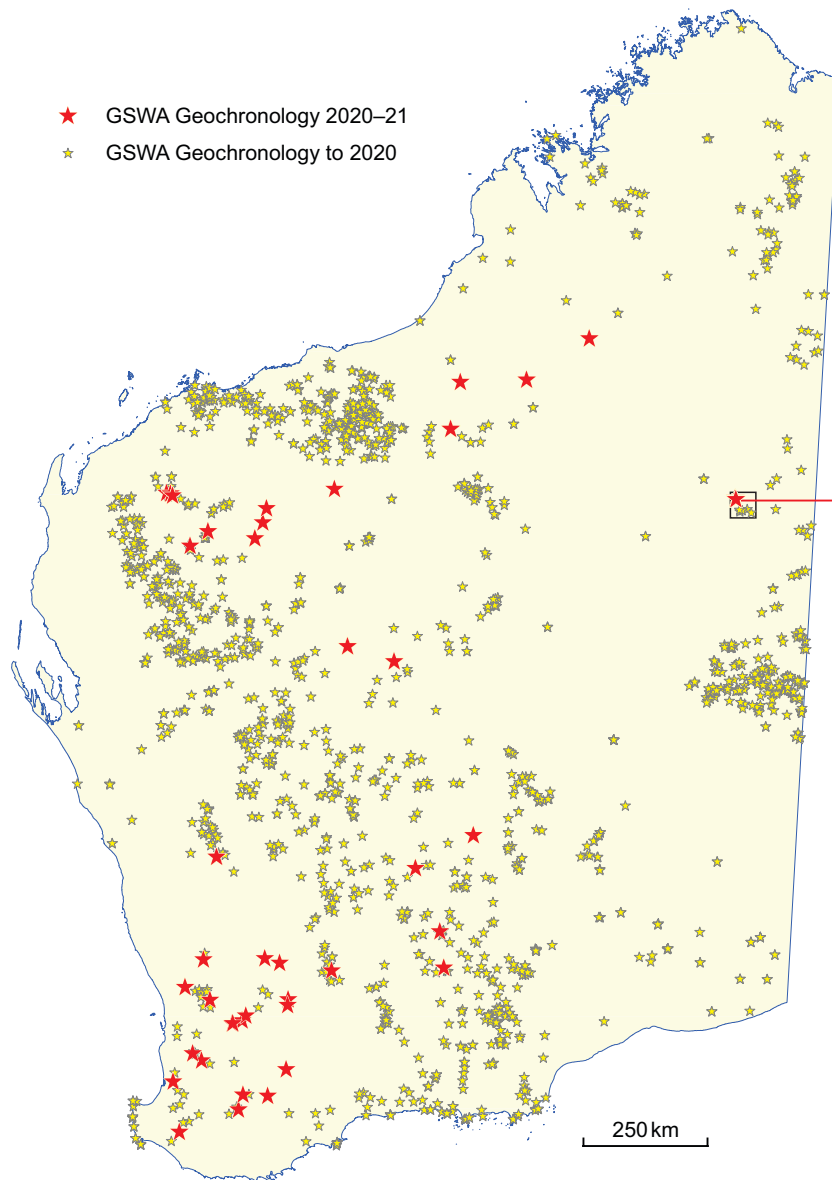


- ★ GSWA Geochronology 2020–21
- ☆ GSWA Geochronology to 2020

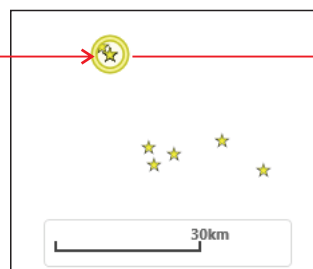


Isotopic age determinations from geological samples throughout Western Australia, obtained by the Geological Survey of Western Australia (GSWA).

Data can be accessed via GeoVIEW.WA:



Use the identify tool in GeoVIEW.WA to select geochronology records



GSWA Geochronology		
GEOCHRON ID	GEOCHRON ROCK TYPE	TECTONIC
228620.1	metasedimentary siliciclastic	North Aus

Click on a row of data to open hyperlinks

Hyperlinks

[Geochronology Record \(analysis document\)](#)

[Geochronology Isotope Data](#)

[Introduction Document](#)

[Isotope Cover Sheet](#)

GSWA Geochronology records (point data) also available from the Data and Software Centre

- Statewide spatial datasets - [GDA1994]
 - Geochronology & Isotope Geology
 - GSWA Geochronology - [GDA1994]

Last Updated	Size	File Format	
02/07/2021	491 KB	ESRI Shape File	Download
02/07/2021	1.02 MB	Google Earth KML	Download
02/07/2021	526 KB	MapInfo TAB	Download
02/07/2021	493 KB	ESRI File Geodatabase	Download

GSWA Geochronology

Free (online): <www.dmirs.wa.gov.au/geochron>.

Free (online): Go to the Data and Software Centre (www.dmirs.wa.gov.au/datacentre) >

Statewide Spatial Datasets > Geochronology & Isotope Geology > GSWA Geochronology



Government of **Western Australia**
Department of **Mines, Industry Regulation**
and **Safety**

Geological Survey of
Western Australia

