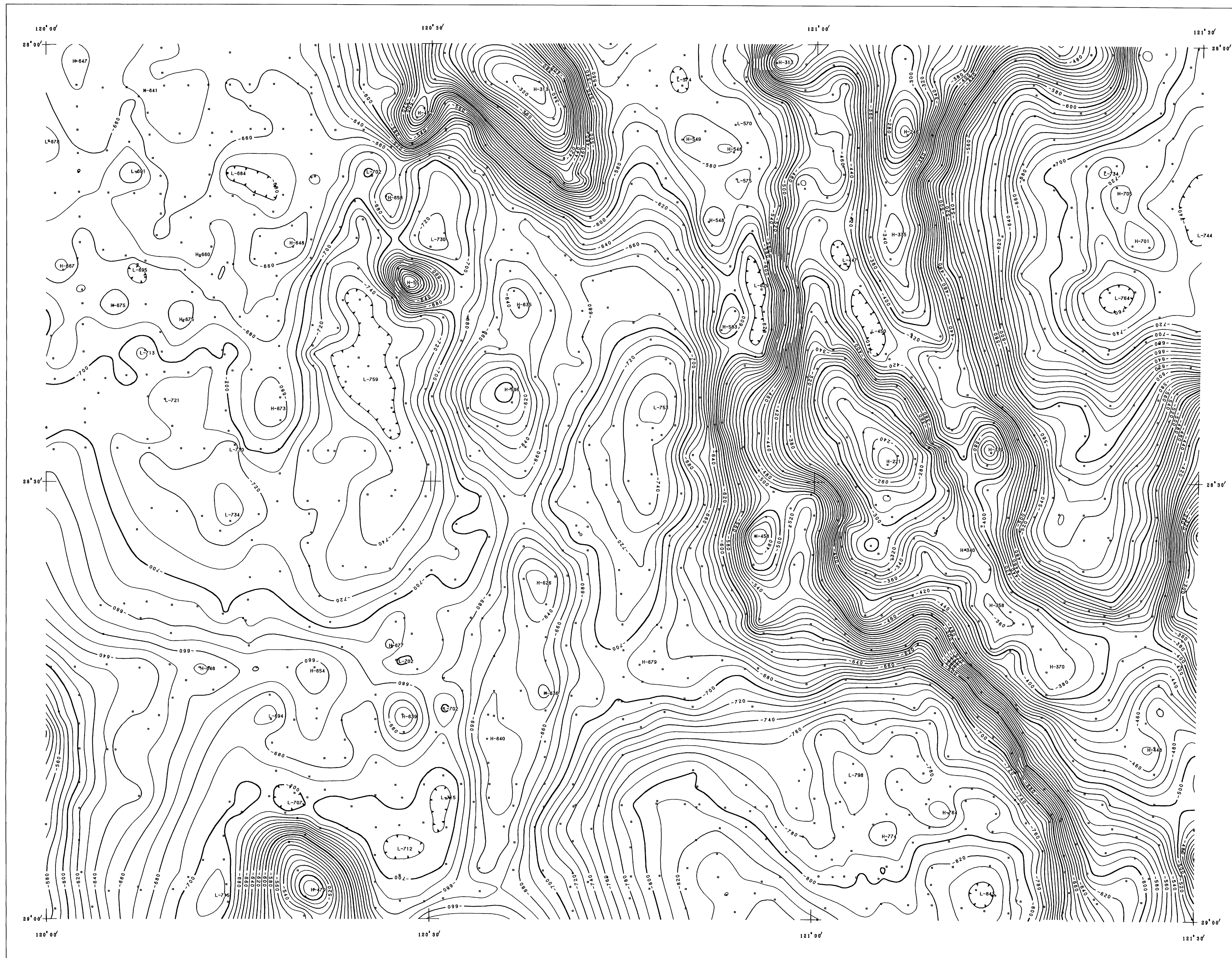


Bouguer gravity
- contours

LEONORA

H 5 1 - 1



AGSO
AUSTRALIAN GEOLOGICAL
SURVEY ORGANISATION

Further copies of this map may be purchased from
AGSO Copy Service, Australian Geological Survey
GPO Box 378, CANBERRA, ACT 2601, FAX (06) 2499984
and
Geological Survey of Western Australia, Mineral House
100 Plain St. EAST PERTH, WA 8004, FAX (09) 2223633

COMPUTED 1993/03/24

The data used to prepare this map were obtained from surveys carried out by AGSO, Geological Survey of Western Australia and private companies. All data are held in principal facts form and will be released in the AGSO National Gravity Database in late 1993. The principal facts for this Special map are available on disc for purchase from AGSO and GSWA. Gravity data compiled and edited by A.S.Murray and J.W.Williams.

Gravity Datum	1984 Australian tesseroid datum and scale. Compatible with IERS1975 (see <i>GMW Report 751 - Gravity Base Station Network Values, Australia (1985)</i>).
Normal Gravity	<i>Geoidic Reference System 1957 (GRS57)</i>
Bouguer Density	2.67 t/m ³
Terrain Corrections	No terrain corrections have been applied
Gravity Stations	Are indicated by small squares
Contour Interval	10 $\mu\text{m}^2/\text{kg}$ (lines at 20 and 100 $\mu\text{m}^2/\text{kg}$) (10 $\mu\text{m}^2/\text{kg} = 1\text{gal}$)
Contour accuracy	$\pm 5 \mu\text{m}^2$ at observation points
Contours	The contours are computer generated from 1 kilometre grid values derived from the observations. Contours <i>not</i> honour marked values where several close stations have been used within the gridding.



SCALE 1 : 250 000

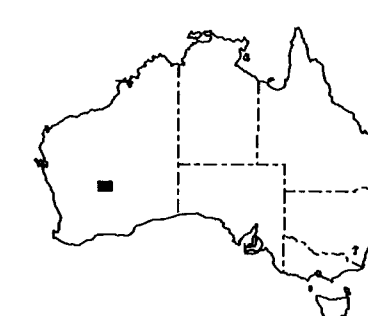


TRANSVERSE MERCATOR PROJECTION Zone 51 - Central Meridian 123° 0' East
AUSTRALIAN NATIONAL SPHEROID

© Commonwealth of Australia 1993

Persons purchasing copies of this map may reproduce it for their own use or for that of their staff, but not for any other purpose except with the written permission of the Director, AGSO, G.P.O. Box 378, Canberra, ACT 2601.

—200—	Contour value
H256	Anomaly high
L-73	Anomaly low
o	Gravity station



INDEX TO ADJOINING
1:250000 MAP AREAS

SANDSTONE G50-16	SIR SAMUEL G51-13	DUKETON G51-14
YOUANMI H50-4	LEONORA H51-1	LAVERTON H51-2
BARLEN H50-8	WENZINS H51-6	EDJUDINA H61-6

LEONORA
WESTERN AUSTRALIA
SHEET H51-1

The fill-in survey 9202 on this map has been a co-operative project between the Australian Geological Survey Organisation (AGSO) and the Geological Survey of Western Australia (GSWA) as part of the National Geoscience Mapping Accord. Gravity measurements for this survey were made by H.G.Reith (AGSO) and D.Reid and J.H.Watt (GSWA).