

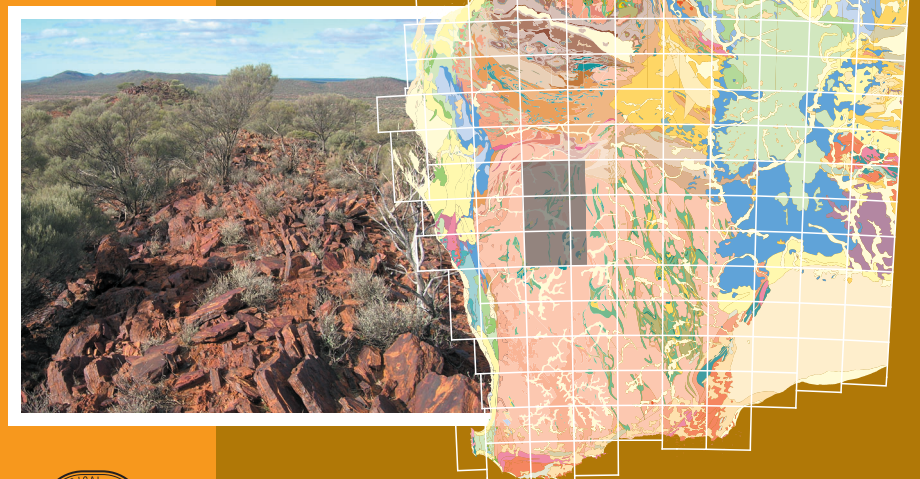


**1:100 000
GEOLOGICAL
INFORMATION
SERIES**

Department of
Mines and Petroleum

**MURCHISON
2009 update**

| | | | | |
|---------------------|---|---------------------|--------------------|-----------------------|
| MILEURA 2345 | KOONMARRA 2445 BELELE | TIERACO 2545 | GLENGARRY 2645 | GLENGARRY SG 50-12 |
| KALLI 2344 | SG 50-11 MADOONGA 2444 | MEEKATHARRA 2544 | GABANINTHA 2644 | |
| NOONDIE 2343 | CUE 2443 CUE | REEDY 2543 | NOWTHANNA 2643 | SANDSTONE SG 50-16 |
| DALGARANGA 2342 | SG 50-15 AUSTIN 2442 | WYNYANGOO 2542 | WOODLEY 2642 | |
| EDAH 2341 | MOUNT MAGNET 2441 | CHALLA 2541 | WINDIMURRA 2641 | YOUANMI SH 50-4 |
| THUNDELARRA 2340 | KIRKALOCKA SH 50-3 KIRKALOCKA 2440 | COOLAMANNI 2540 | YOUANMI 2640 | |



Geological Survey of Western Australia

WESTERN AUSTRALIA

1:100 000 GEOLOGICAL INFORMATION SERIES

MURCHISON

2009 update

Datasets featured:

Geology

- 1:100 000 geology *†
- 1:100 000 interpreted geology *
- Cross section geology (PDF)
- 1:250 000 geology mosaic image
- 1:500 000 geology
- 1:500 000 interpreted bedrock geology *†
- 1:500 000 tectonic units
- 1:100 000 geology (Geoscience Australia)
- 1:2 500 000 geology
- Petrography sample sites and information
- GSWA field observation sites and information (WAROX)
- Geochemistry sample sites and information
- Geochronology sample sites and information
- Hallberg Murchison geology dataset 1989-94 and reports (GSWA Record 2000/20)
- Index to relevant GSWA products
- Selected GSWA publications including maps (PDF)

Geophysics

- Index to geophysical surveys (MAGIX)
- Gravity image
- Total magnetic intensity image
- Ternary radiometric image

Mineralization and exploration

- Mineral exploration activities (EXACT and WAMEX)
- Mineral tenements (TENGRAPH)
- Mineral deposits (MINEDEX)
- Petroleum and minerals exploration drillholes (WAPIMS)
- Abandoned mine sites (WABMINES)

Topography

Remotely sensed information

- ASTER
- Landsat TM
- SPOT
- Digital elevation model from Shuttle Radar Topography Mission

GeoVIEWER.WA has been designed for the Windows operating system, and has been tested to run on Windows NT4/ME/2000/XP.



Geological Survey of Western Australia
100 Plain Street East Perth 6004 Western Australia
Phone: +61 8 9222 3168 Facsimile: +61 8 9222 3633
Home page: <http://www.dmp.wa.gov.au/gswa>

AUSTIN
CHALLA
COOLAMANNI
CUE
DALGARANGA
EDAH
GABANINTHA
† GLENGARRY
KALLI
KIRKALOCKA
* KOONMARRA
* MADOONGA
MEEKATHARRA
MILEURA
MOUNT MAGNET
NOONDIE
NOWTHANNA
REEDY
THUNDELARRA
* TIERACO
WINDIMURRA
WOODLEY
WYNYANGOO
YOUANMI

Cover photo: Weld range at the Gap looking east.

The information on this disk remains the property of the Western Australian Department of Mines and Petroleum and is covered by Crown copyright. Copying or on-selling of these data without prior written permission of the Department of Mines and Petroleum will be seen as a breach of copyright.

September 2009
ISBN 1-74168-222-9



1:100 000 Geological Information Series — Murchison, 2009 update

Product available from First Floor counter, Mineral House, 100 Plain St, East Perth, WA 6004, AUSTRALIA. Or ordered through: www.dmp.wa.gov.au/ebookshop

Enquiries to Email: gsd.dda@dmp.wa.gov.au; Phone: +61 8 9222 3459; Fax: +61 8 9222 3444.

Cost: \$55 [inc. GST]