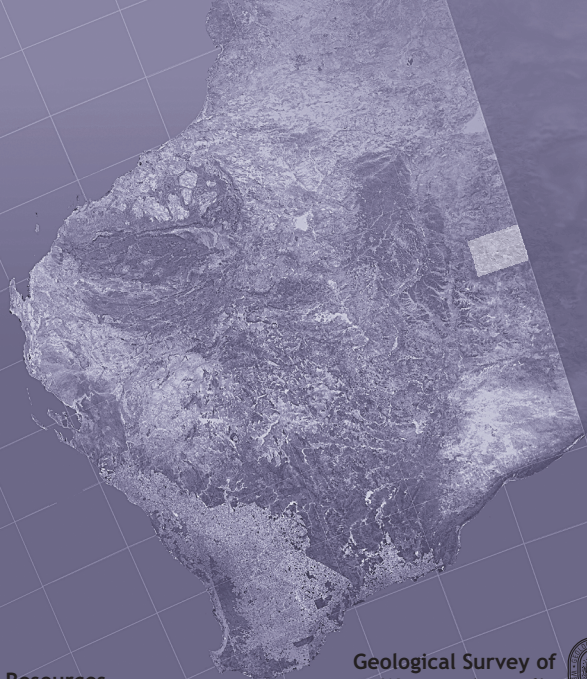


**GSWA RECORD
2004/11**

**DEM DATA
WEST MUSGRAVE
GEOLOGICAL EXPLORATION PACKAGE**



Department of
Industry and Resources

Geological Survey of
Western Australia



**DEM DATA, WEST MUSGRAVE
GEOLOGICAL EXPLORATION PACKAGE
Record 2004/11**

Digital Elevation Model data for six 1:100 000 sheets:
FINLAYSON (4446), HOLT (4546), BATES (4646), COOPER (4445),
BLACKSTONE (4545), BELL ROCK (4645).
Data supplied in ASCII and ERMapper format

The information on this disk remains the property of the Western Australian Department of Industry and Resources and is covered by Crown copyright. Copying or on-selling of these data without prior written permission of the Department of Industry and Resources will be seen as a breach of copyright.



Cover image modified from Landsat data,
courtesy of ACRES

Geological Survey of Western Australia
100 Plain Street East Perth 6004 Western Australia
Phone: +61 8 9222 3168 Facsimile: +61 8 9222 3633
Home page: <http://www.doir.wa.gov.au/gswa>



April 2004

DEM data, West Musgrave geological exploration package

Product available from First Floor counter, Mineral House, 100 Plain St, East Perth, WA 6004, AUSTRALIA. Or ordered through: www.doir.wa.gov.au/ebookshop

Enquiries to Email: gsd.dda@doir.wa.gov.au; Phone: +61 8 9222 3459; Fax: +61 8 9222 3444.

Cost: \$55 [inc. GST]