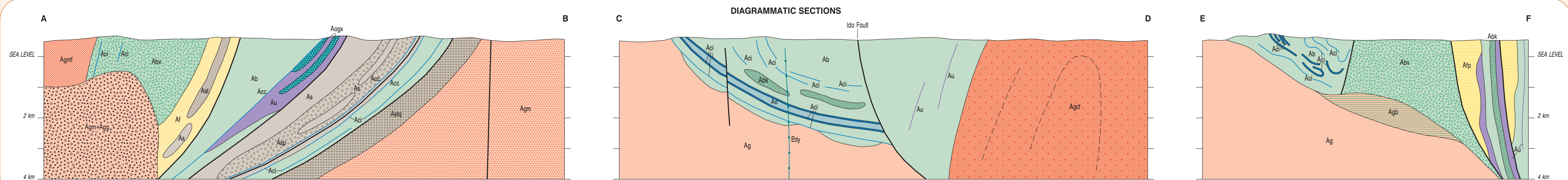
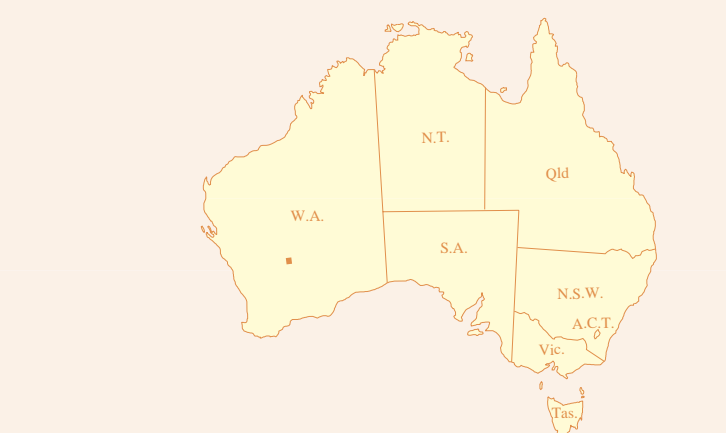
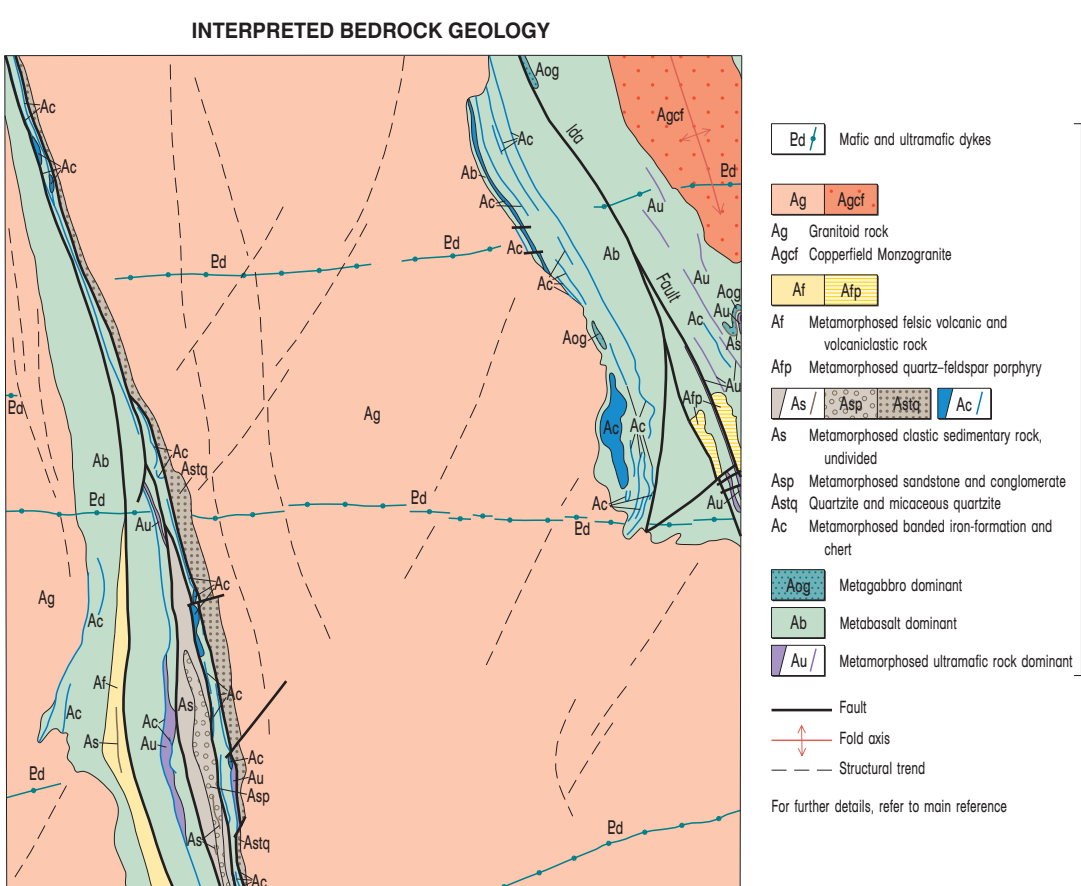
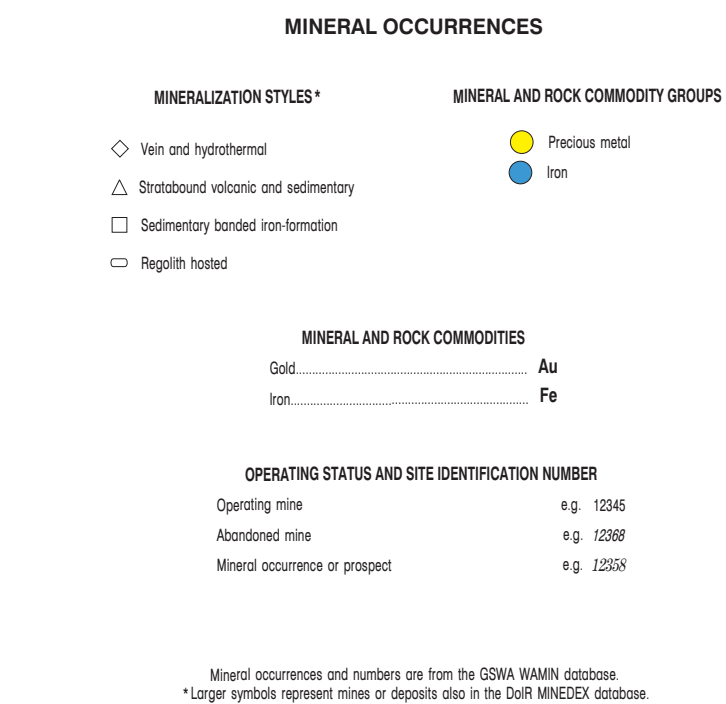
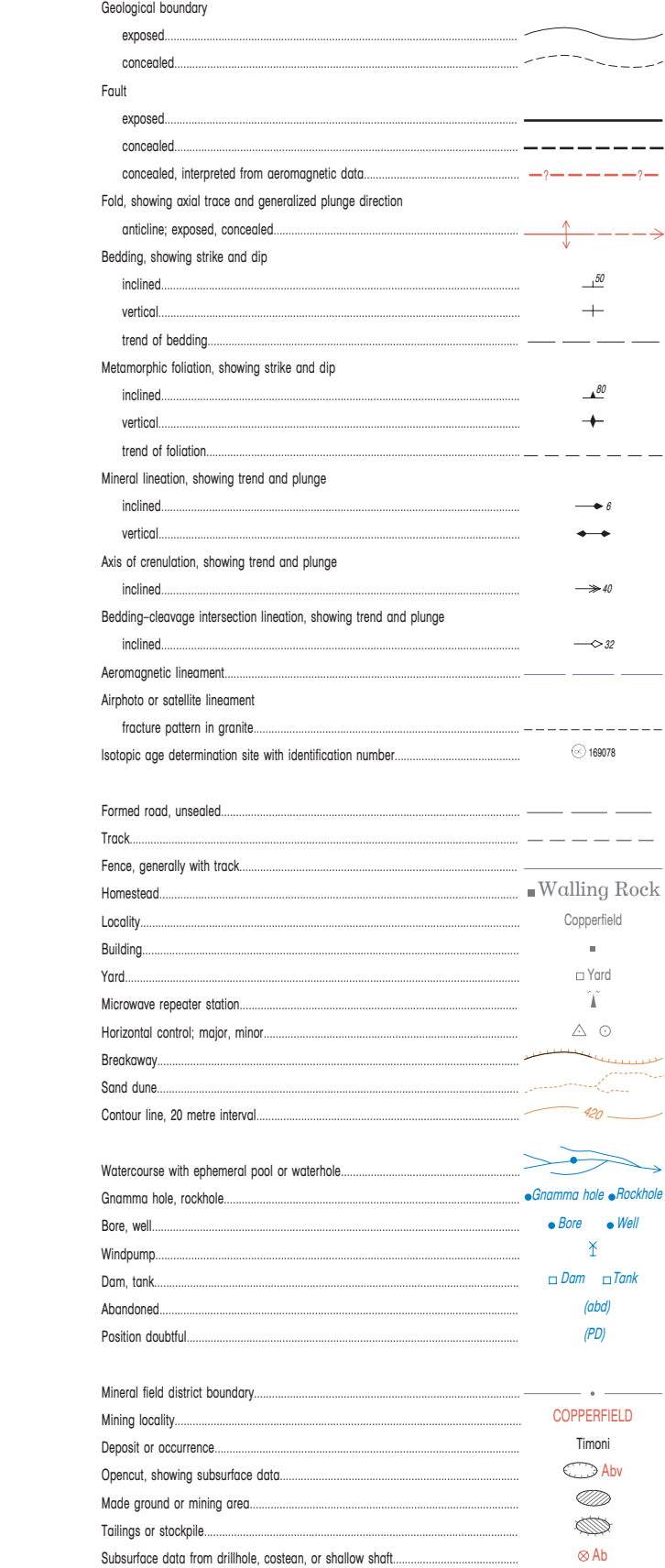
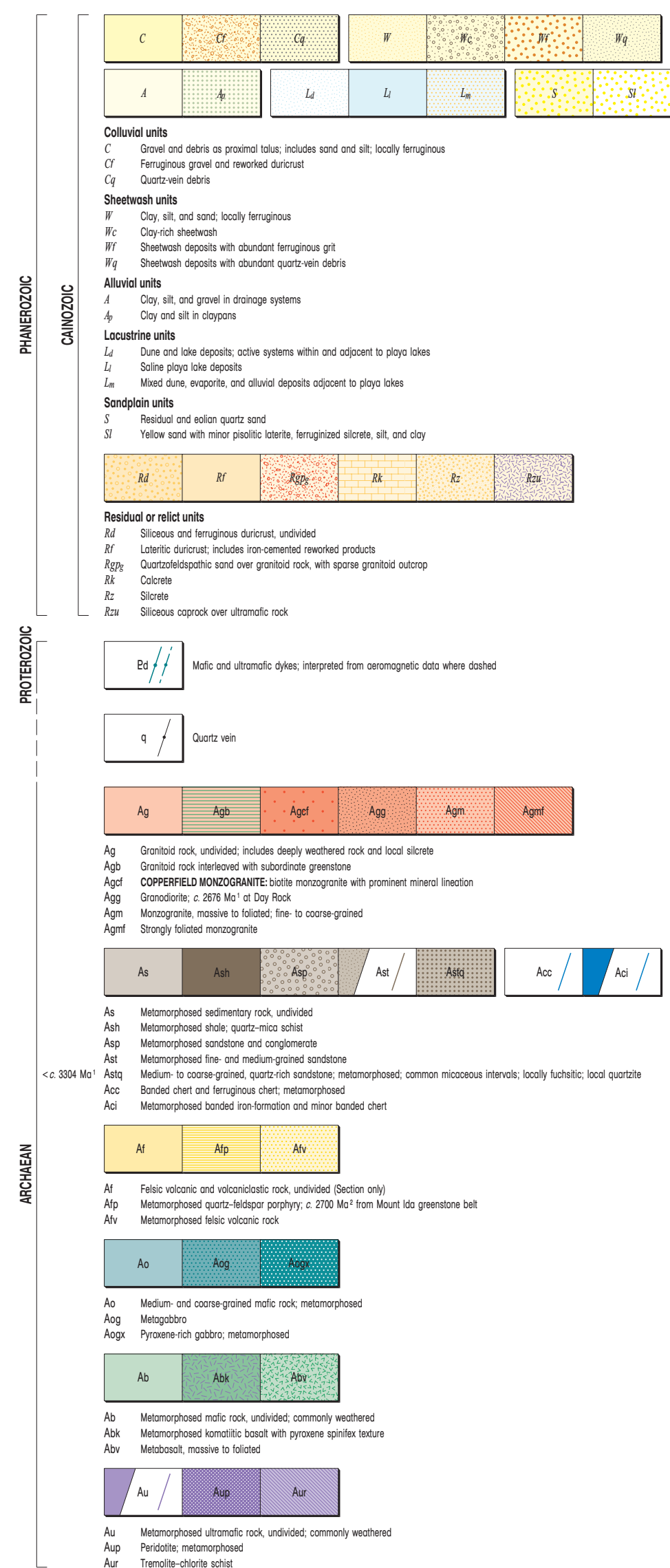
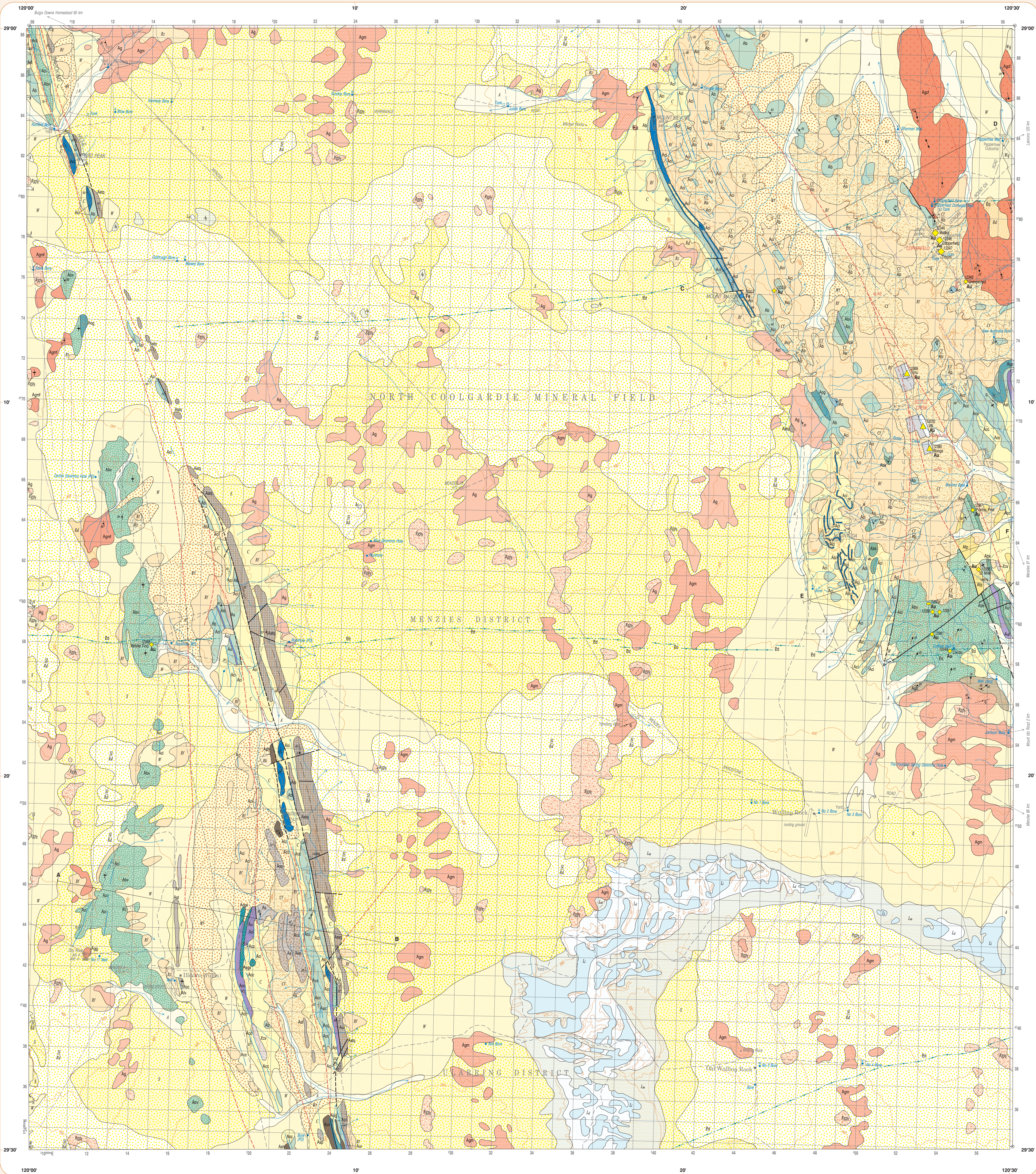


MOUNT MASON
GEOLOGICAL SURVEY OF WESTERN AUSTRALIA

AUSTRALIA 1:100 000 GEOLOGICAL SERIES

SHEET 2939



Compiled by S. Wyche 2001-2002
Geology by S. Wyche 2001 and M. B. Duggan (Geoscience Australia) 1990-1991
(Mount Mason preliminary ed. 1990)
Geochronology by:
(1) D. R. Nelson, 2000, GSA Record 2000(2), p. 239-257
(2) D. R. Nelson, 2002, GSA Record 2002(2), p. 240-248
Edited by C. Strong and G. Looz
Cartography by P. Taylor and K. Greenberg
Topography from the Department of Land Administration Sheet 51 51-S, 2000,
with modifications from geological field survey
Mineralization and rock commodity information from non-cofidential data held in the WAMIN
database, GSA, at 13 May 2003.
Published by the Geological Survey of Western Australia. Digital and hard copies of this map
are available from the Information Centre, Department of Industry and Resources,
100 Park Street, East Perth, W.A. 6004. Phone (08) 9221 3450. Fax (08) 9221 3444
Web www.dor.wa.gov.au Email geosurvey@dor.wa.gov.au
The recommended reference for this map is:
WYCHE, S., and DUGGAN, M. B., 2002, Mount Mason, W.A. Sheet 2939, Western Australia
Geological Survey, 1:100 000 Geological Series

