

Published by the Bureau of Mineral Resources, Geology and Geophysics, Department of National Development, in conjunction with the Geological Survey of Western Australia, issued under the joint authority of the Minister for National Development and the Western Australian Minister for Mines. Base map compiled by the Division of National Mapping from aerial photography at 1:50 000 scale. © Commonwealth of Australia, 1978.

INDEX TO ADJOINING SHEETS

Sheet	North	West	South	East
52-11	52-12	52-13	52-14	52-15
52-16	52-17	52-18	52-19	52-20
52-21	52-22	52-23	52-24	52-25
52-26	52-27	52-28	52-29	52-30
52-31	52-32	52-33	52-34	52-35
52-36	52-37	52-38	52-39	52-40
52-41	52-42	52-43	52-44	52-45
52-46	52-47	52-48	52-49	52-50
52-51	52-52	52-53	52-54	52-55
52-56	52-57	52-58	52-59	52-60
52-61	52-62	52-63	52-64	52-65
52-66	52-67	52-68	52-69	52-70
52-71	52-72	52-73	52-74	52-75
52-76	52-77	52-78	52-79	52-80
52-81	52-82	52-83	52-84	52-85
52-86	52-87	52-88	52-89	52-90
52-91	52-92	52-93	52-94	52-95
52-96	52-97	52-98	52-99	52-100

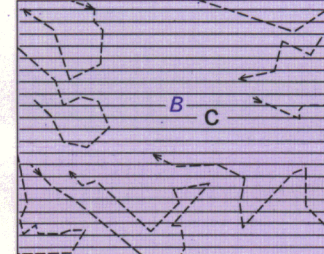


Scale 1:250 000

Grey numbered lines are 20 000 metre intervals of the Australian map grid, zone 52. Transverse Mercator projection.

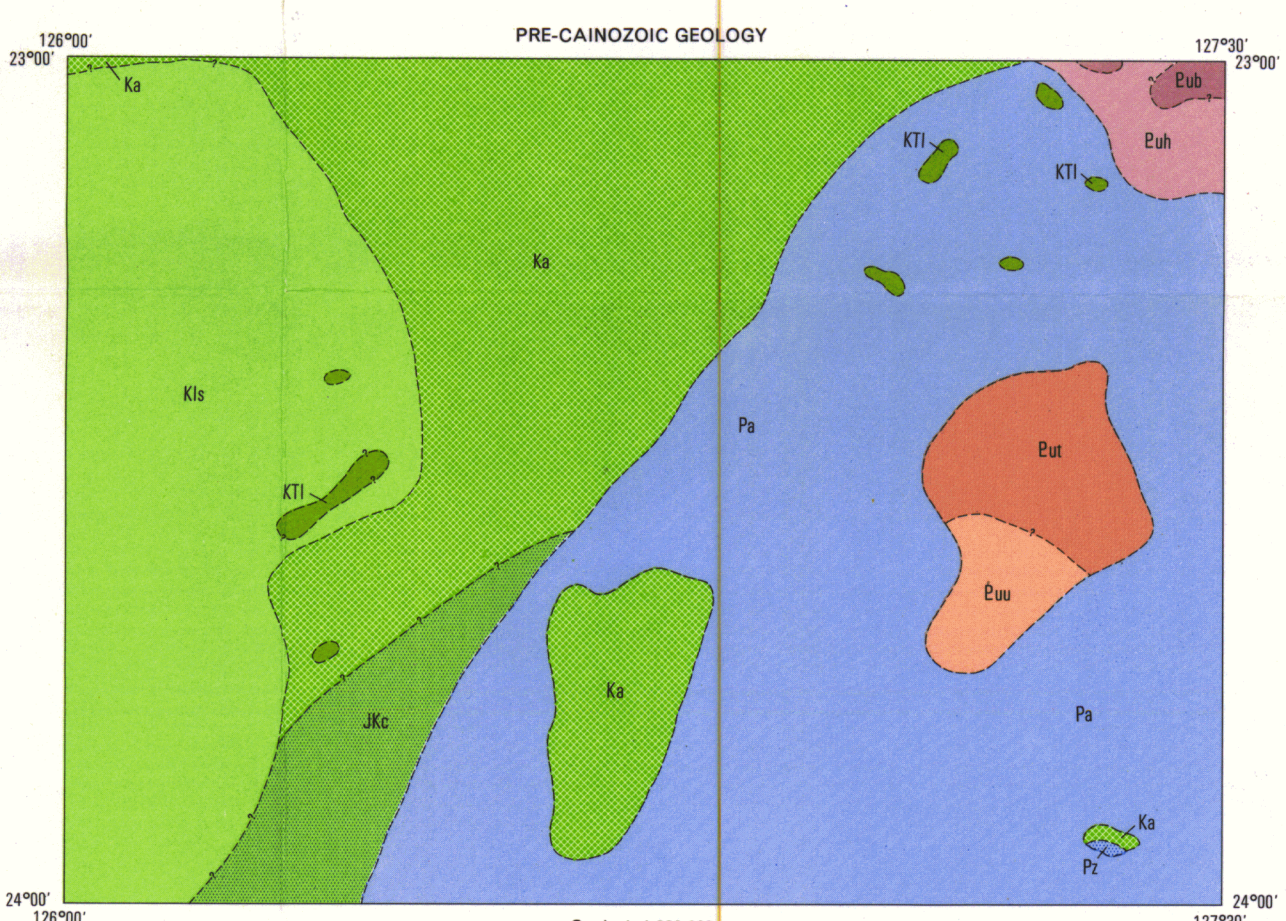
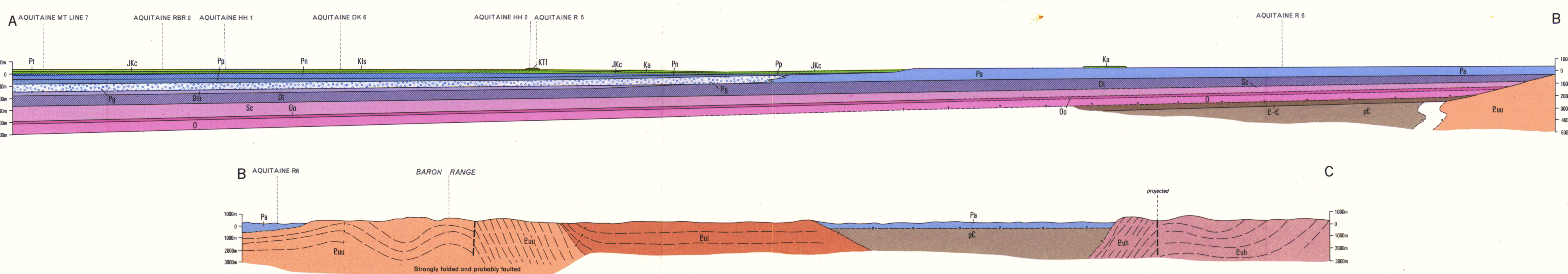
Schematic Sections  
Cainozoic sediments omitted  
Scale 1/1 = 1

RELIABILITY DIAGRAM



Geology C General reconnaissance, few traverses, mainly airphoto interpretation  
Helicopter traverse  
Gravity B Reconnaissance

Geology 1966 by B. H. Stinear, A. T. Wells, BMR  
1967 by J. J. Vennart, BMR  
1975 by R. R. Towler, A. N. Yates, M. J. Jackson, BMR  
Compiled by R. R. Towler, G. A. Young, BMR  
Geophysics 1962 and 1968 by Geophysical Branch, BMR  
Design by Cartographic Section, BMR  
Drawn by Cartographic, Sydney  
Printed by Mercury Press, Hobart, Australia



Scale 1:1 000 000

First Edition 1978

RYAN

SHEET SF 52-13

Copies of this map may be obtained from the Bureau of Mineral Resources, Geology and Geophysics, Canberra, A.C.T., or the Geological Survey of Western Australia, Perth.