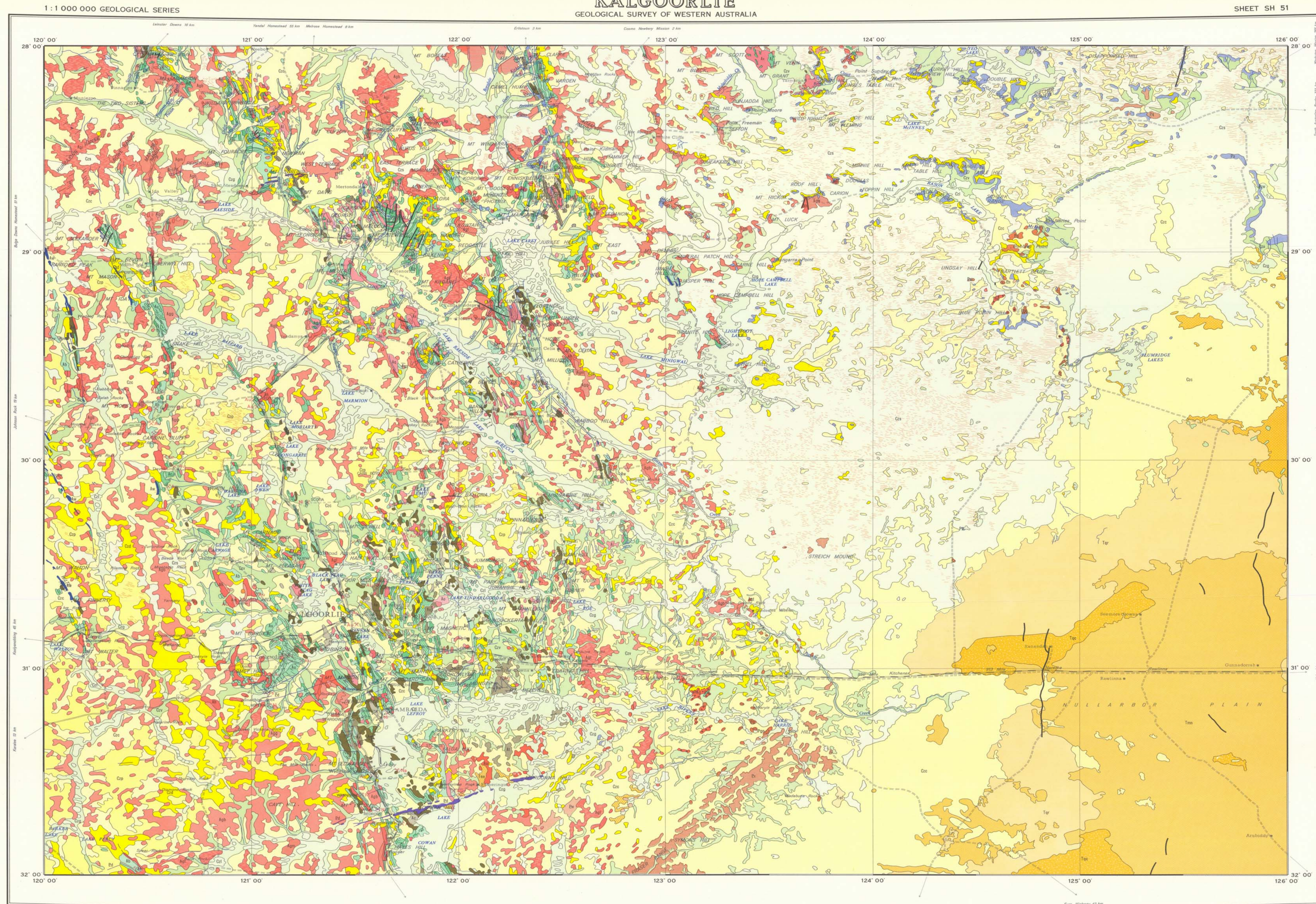


GEOLOGICAL SURVEY OF WESTERN AUSTRALIA

SHEET SH 51



Compiled and published by Geological Survey of Western Australia. Cartography by Geological Drafting Section, Department of Mines. Topographic base from compilations by Department of National Mapping, Canberra, A.C.T. Printed by Government Printing Office, Perth, 1975.

Copies of this map may be obtained from the Geological Survey of Western Australia, in Perth.



MAIN TECTONIC UNIT



HON. A. MENSAROS, M.L.A.
MINISTER FOR MINES
J. H. LORD, DIRECTOR, GEOLOGICAL SURVEY

SCALE 1:1 000 000

LAMBERT CONFORMAL CONIC PROJECTION
STANDARD PARALLELS 28° 40' and 31° 20'

INDEX TO 1:250 000 SHEETS			
LEONORA SH 51 - 1	LAVERTON SH 51 - 2	RASON SH 51 - 3	NEALE SH 51 - 4
MENZIES SH 51 - 5	EDJUDINA SH 51 - 6	MINIGWAL SH 51 - 7	PLUMBRIDGE SH 51 - 8
KALGOORLIE SH 51 - 9	KURNALPI SH 51 - 10	CUNDEELEE SH 51 - 11	SEEMORE SH 51 - 12
BOORABBIN SH 51 - 13	WIDDIGEMOOLTHA SH 51 - 14	ZANTHUS SH 51 - 15	NARETHA SH 51 - 16

KALGOORLIE
SHEET SW 51

FIRST EDITION 197
Green Copyright Reserved

REFERENCE

Crl	Clay, sand, silt, gypsum, halite, evaporite deposits in playa lakes
Csg	Silt, sand, gravel, lignite and clay deposits; mixed siltstone and alluvial deposits resurged to playa lakes, laminae, dunes; saline valley fill; contains numerous small salt lakes and clays
Csa	Red to grey quartz sand, minor sands silt, siltstone deposits in longitudinal dunes and the clays included resurged sandstone on duricrust surface
Csv	Clay, silt, sand, gravel, calcare, alluvial deposits in major drainage lines; valley fill
Cv	Clay, loam, silt, sand, ironstone and quartz pebble veneer, contains sheet and nodular texture at shallow depth; residual and colluvial deposits on low slope and undulating surface
Csp	Yellow to white sand, silt, sand, sandstone deposits, overlie duricrust surface
Ctd	Laterite, ferriferous, siliceous, ironstone nodules and gravel in yellow sand; duricrust
Ter	Residual clay and kankar; clay containing sheet and nodular kankar with oolitic texture
Tpc	Recrystallized limestone, microcrystalline limestone, formed by recrystallization of Rutilifer Limestone
Tsp	Fine-grained sandstone, siltstone, claystone, minor conglomerate
Tsc	Sandstone, siltstone, claystone, minor calcarenite
Tnn	Ferruginiferous calcarenite
Tet	Well sorted brownish calcarenite
Tss	Limestone, dolomite, spargolite
Si	Glaucous sandstone, siltstone, claystone, conglomeratic sandstone with large-scale cross-bedding
Pa	Poorly sorted sandstone, conglomerates, siltstone, claystone, lime, rare varves, fluviatile calcarenite, glacio-lacustrine and glacial deposits
Pss	Fine-grained, well-sorted quartzarenite, some very large cross-bedding; minor claystone cross-bedding
Et	Dolomite, limestone partly stramonitic, minor quartzite (Nasir Junction Area), meta-arkosic (Candee Area)
Tw	Quartzite, shale, phyllite, thin basal conglomerate
Tp	Granitic and allied intrusive rocks; composition range from tonalite to granite, even-grained to porphyritic; fine to coarse-grained
Tm	Metamorphous homogeneous dolerite, marble, gabbro; minor hybrid rocks; layered ironstone, garnetiferous gabbro, hornblende
Es	Protonema basic granulite bands, and granulite gabbro, feldspar gneiss microgranite and gabbro
Esp	Gneiss, variable, garnet gneiss, derived from mixed parentage
Es	Silicic intrusive rocks, peridotite, pyroxenite, tremolite-chlorite assemblages
Es	Migmatite; mixed metagabbro and gneissic rocks; ranging from relictic to strongly banded type; incorporating relictic Archean basement
Ebr	Migmatite of uncertain age
Esp	Granitic rocks of uncertain age
Ec	Carbonatite
Ed	Malic dark, calc. quartz diorite, gabbro, norite, pyroxenite, granophyre peridotite
Es	Quartz veins; breccia; in fault zones, joints
Aq1	Quartz, xenite, veinite
Aq2	Granite, admetallite, perophytic texture
Aq3	Granite, admetallite, granodiorite; even grained, biotite bearing
Aq4	Granodiorite, basaltic, quartz diorite; even grained, biotite, hornblende bearing
Aq5	Strongly foliated granitic rocks; sheared, marginal to major plutons, gneissic granite
Aq6	Migmatite, gneiss, ranging from relictic to strongly banded varieties
Aq7	Quartz-mica-garnet admetallite-kyanite-sillimanite assemblages; schistose, derived from clastic and pyroclastic rocks
Aq8	Amphibolite, pyroxene hornblende, plagioclase-hornblende-garnet diopside assemblages; derived mainly from coarse-grained mafic igneous rocks
Aq9	Basic hornfels, fine-grained amphibolite; derived mainly from fine-grained mafic igneous rocks
Aq10	Pyroclastic conglomerate, minor sandstone, arkosic sandstone and gneissite
Aq11	Banded shale, siltstone, sandstone, minor conglomerate lenses
Aq12	Well-bedded gneissite, siltstone, shale
Aq13	Chert, jaspilite, ferruginous quartzite, quartzite, minor banded iron formation
Aq14	Banded iron formation, jaspilite, minor chert
Aq15	Mixed clastic and volcanoclastic rocks in a felsic igneous assemblage mudstone, gneissite, black shale, minor chert, xagapite flint, hostolite breccia
Aq16	Mixed clastic and volcanoclastic rocks in a felsic igneous assemblage, tuffaceous shale, siltstone, sandstone, dyonite conglomerate
Aq17	Pyroclastic rocks, quartz-feldspar-mica-chlorite-assemblages, structures in schistose
Aq18	Pyroclastic rocks; tuff, breccia, agglomerate
Aq19	Felsic intrusive rocks; rhyolite, rhyodacite, dacite quartz feldspar porphyry; fine-grained to porphyritic; acid to intermediate composition
Aq20	Felsic intrusive rocks; rhyolite, rhyodacite, dacite; fine-grained to porphyritic, acid to intermediate composition
Aq21	Intermediate intrusive rocks; andesite; porphyritic to amygdaloidal texture
Aq22	Mafic intrusive rocks; homogeneous dolerite, gabbro; basic composition, medium to coarse-grained
Aq23	Layered mafic-ultramafic bodies; composition range through peridotite, harzburgite, orthopyroxene, norite, gabbro, granophyre
Aq24	Mafic intrusive rocks; tholeiitic basalt; fine-grained, basic composition
Aq25	Ultramafic intrusive rocks, "high Mg" basalt", tremolite-chlorite plagioclase assemblages; schistose
Aq26	Ultramafic intrusive and intrusive rocks; serpentine, serpentinized peridotite talc-carbonate
Aq27	"Spinifer" texture, flow tops, indicative of mafic origin
