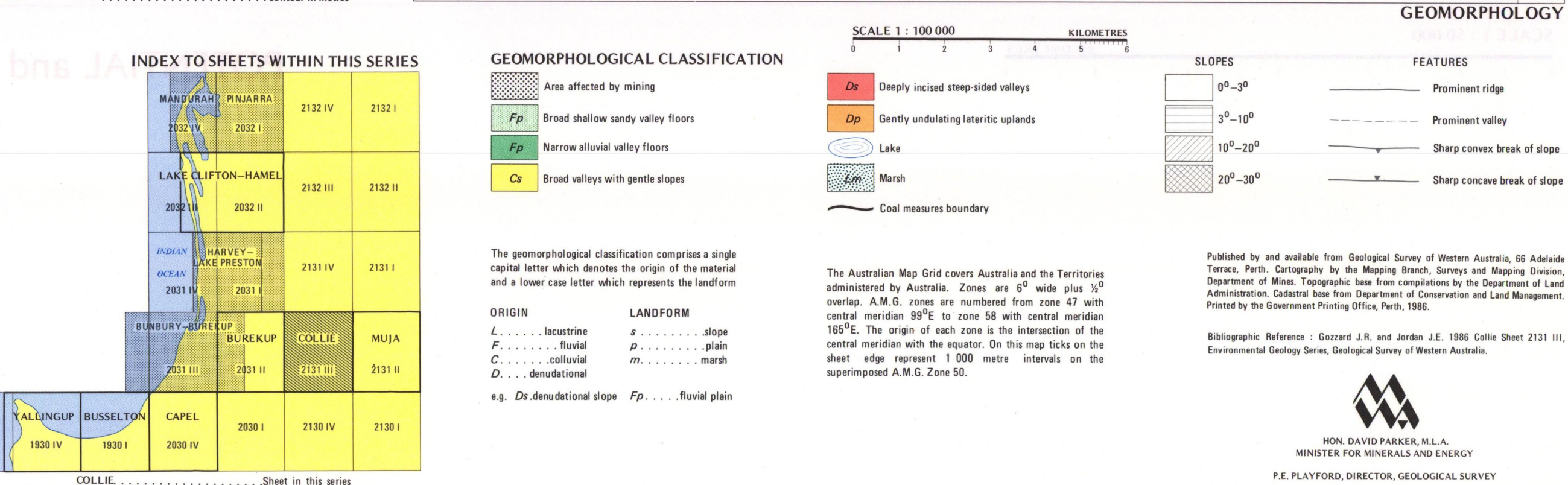
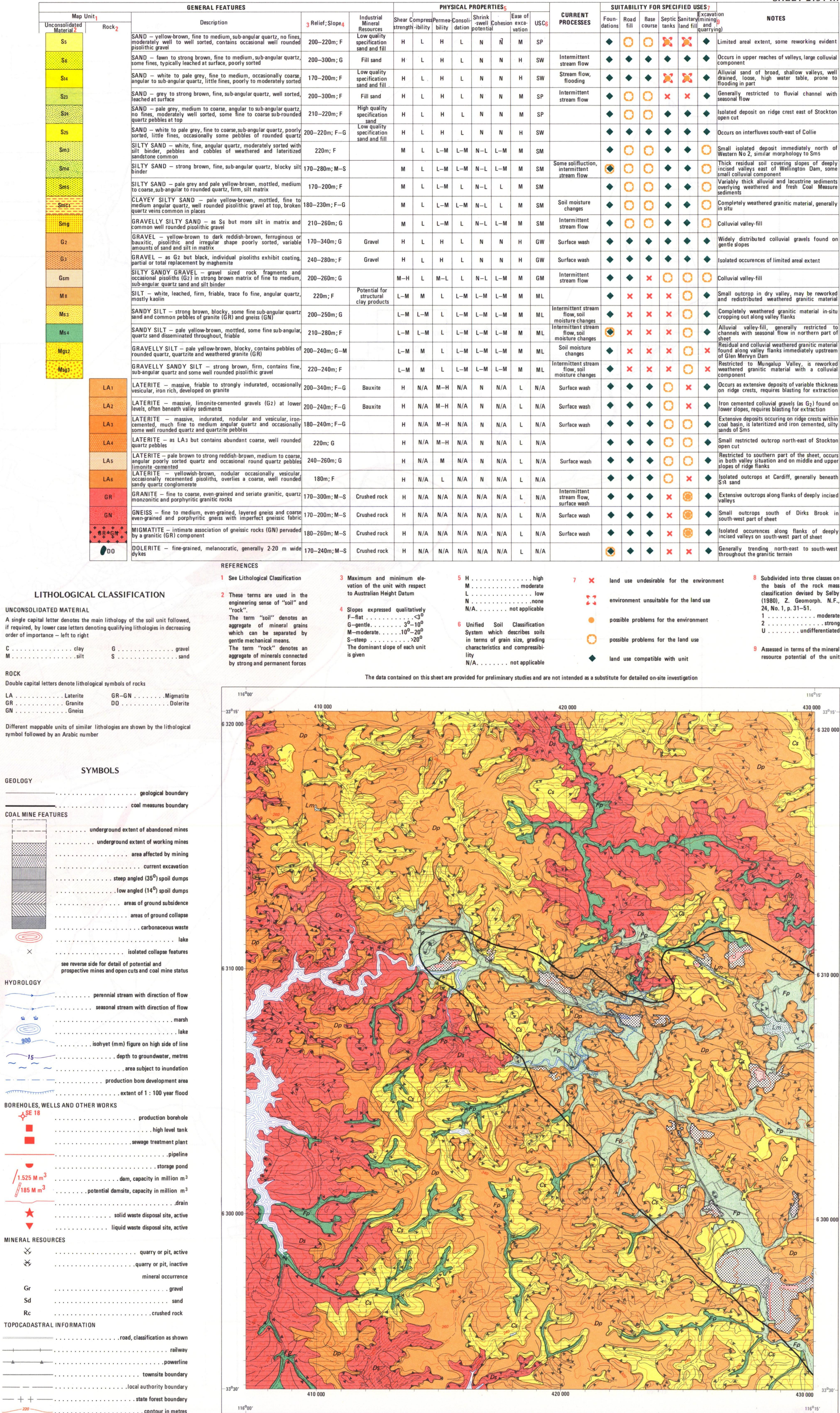
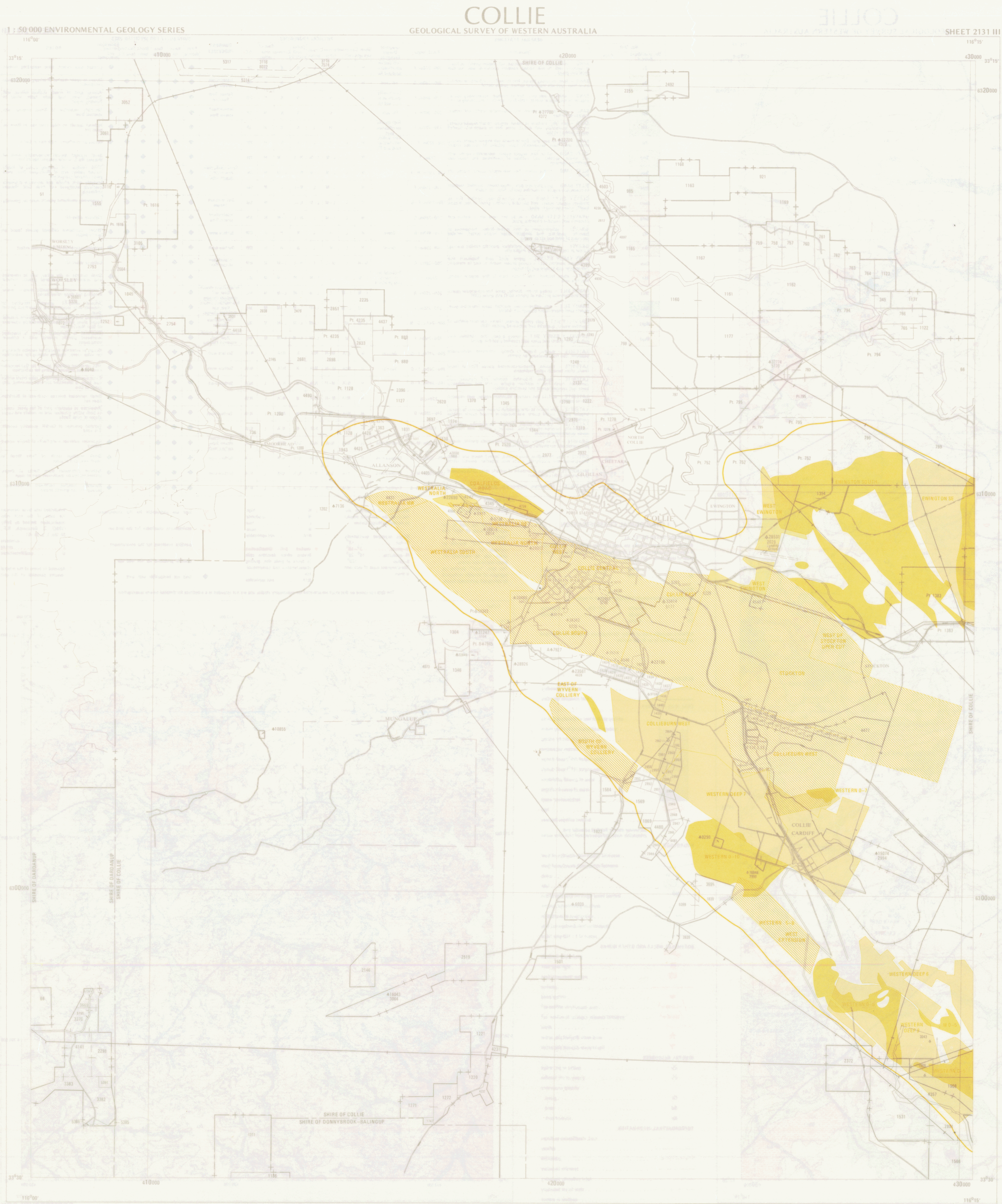


**COLLIE**  
GEOLOGICAL SURVEY OF WESTERN AUSTRALIA







COLLIE COAL MINE STATUS

PHYSICAL DESCRIPTIVE PARAMETERS																						
MINE NAME	TYPE <sup>1</sup>	Location (distance from Collie, km)	Area affected by mining (ha)	Area of water (ha)	Year opened	Year closed	Quantity produced (tonnes)	Sumps mined	Member	Depth of Coal (metres)	Safety hazard <sup>2</sup>		Accessibility <sup>3</sup>	Visibility <sup>3</sup>	Waste dumps	Open-cut enforced	Shifts uncovered and unsealed	Abandoned plant and machinery	Derelict buildings and structures	Close to habitation and main roads		
											Type	hazard <sup>3</sup>										
WEST COLLIE	UM	In Allston			1898	1898	2947	No. 2	Ewington	40-50	37	Hot ash	L	VH	L	Yes		No	No	No	Yes	
WESTRALIA NEW	UM	1 km to Allston	58	8	1953	1956	83838	Walford	Ewington	10-110	33	Hot ash	L	VH	L	Yes		Yes	No	Yes	Yes	
BLACK DIAMOND	UM	1 km to Allston			1953	1954	70204	No. 1	Ewington	10-38	37	Open cut, hot ash	M	VH	H	Yes		Partly under water		Yes		
	OC	1948	1953	344550	No. 1	Ewington	10-20	85		Yes	Yes											
MOIRA	UM				1900	1901	19727	Moira	Ewington	10-40	22		VH									
COOPERATIVE OLD	UM	0-3	76	0	1902	1917	839439	Walford	Ewington	0-50	55	Hot ash, collapses	L	VH	L-M	Yes	No	No	Yes	Yes		
COOPERATIVE NEW	UM				1918	1969	4702738	Walford	Ewington	10-120	28											
WESTRALIA OLD	UM	1 km to Allston			1909	1932	1614811	Walford	Ewington	15-131	34	Hot ash	L	M-H	L	Yes		No	No	Yes	No	
WALLEND	UM	In Collie	61	0.5	1898	1912	1042072	Walford	Ewington	0-50	42	Collapsing mine entries	M	VH	H	Yes	Yes	No	No	No	Yes	
	OC				1946	1948	118628	Walford	Ewington	0-15	85											
PROPRIETARY	UM	1			1911	1955	5057557	Walford	Ewington	24-152	30	Hot ash	L	H	L	Yes		No	No	No	Yes	
STOCKTON	UM	9	107	16.5	1927	1969	2750806	Stockton	Walford	Ewington	12-100	30	Hot ash, drips, water, collapses	L	H	VH	Yes	Yes	No	No	No	No
	OC				1943	1957	1548910	Stockton	Ewington	12-20	85											
GRiffin	UM				1926	1935	1814506	Iscon	Collaburn	24-214	50			M-H	L	Yes		No	No	Yes	Yes	
WYVERN	UM	4-5	23.8	0	1943	1958	772006	No. 2	Collaburn	15-101	32	Hot ash, collapses	L	M-H	L	Yes		No	No	Yes	No	
PHOENIX	UM				1948	1957	180487	Phoenix	Collaburn	15-213	37			M-H	L	Yes		No	No	Yes	No	
SCOTTISH	UM				1903	1929	513103	No. 2	Collaburn	10-60	44			H	L	Yes		No	No	Yes	Yes	
COLLIERY	OC		48	0	1950	1953	158832	No. 2	Collaburn	10-20	85	Hot ash	L		VH	Yes	Yes	No	No	No	Yes	
WESTERN No. 7	UM	7			1953		133795 <sup>2</sup>	No. 2	Collaburn	0-30	35	current mine		H	VH			current mining operation			Yes	
BOULDER TUNNEL	UM	10	34.5	0	1900	1900				0-7		Collapsing	L	L	L	Yes		Yes	No	No	No	
CARDIFF-NEATH	UM	10			1903	1969	4731235	Cardiff- Neath	Cardiff	0-110	25 15	Hot ash, collapses	L	M	VH	M	Yes	No	No	Yes	Yes	
WESTERN No. 2	UM	14	34	0	1952		1150956 <sup>2</sup>	Wyvern	Collaburn	15-106	40	current mine		M-H	H			current mining operation			Yes	
WESTERN No. 5	OC				1970		925034 <sup>2</sup>	Cardiff- Neath	Cardiff	10-50	92	current mine		M-H	VH			current mining operation			No	
WESTERN No. 6	UM	17	600	4	1976		1174237 <sup>2</sup>	Wyvern	Collaburn	15-120	20	current mine		M-H	H			current mining operation			No	
EWINGTON	UM				1953	1969	406090	Stockton	Walford	Ewington	10-81	26					Yes	Yes	Yes	Yes	No	
	OC 1	7	94	13	1952	1959	683121	Stockton	Walford	Ewington	10-20	80	Hot ash	L	L	H	Yes	Yes	No	No	No	
	OC 2				1950	1950	27174	Stockton	Walford	Ewington	10-15	80					Yes	Yes	No	No	No	

REFERENCES  
1 UM Underground mine  
OC Open cut  
2 Figures to 31.12.85  
3 L low  
M moderate  
H high  
VH very high



POTENTIAL and PROSPECTIVE MINES and OPEN CUTS

