

## GEOLOGICAL SURVEY OF WESTERN AUSTRALIA

SHEET SH 51-5

## AUSTRALIA 1:250 000 GEOLOGICAL SERIES

## SYMBOLS

- ## MINERAL OCCURRENCES

MINERALIZATION STYLES<sup>a</sup> MINERAL AN

- py, pegmatite, gneiss, and skarn
- magmatic mafic and ultramafic
- and hydrothermal
- around volcanic and sedimentary
- around sedimentary and/or
- sedimentary banded iron-formation
- with host
- initiated
- Precious mineral  
Precious metal  
Steel industry metal  
Specialty metal  
Base metal  
Iron  
Industrial mineral  
Construction material

## MINERAL AND ROCK COMMODITIES

- |   |      |
|---|------|
| Commodity is gold unless otherwise indicated on the map |      |
| Beryl   | Brl  |
| Borac.  | Bos  |
| Clay  | Cy   |
| Copper  | Cu   |
| Emerald   | Emr  |
| Fluorite  | Fl   |
| Gold  | Au   |
| Grovel  | Gvl  |
| Gypsum  | Gp   |
| Iron  | Fe   |
| Kaolin  | Kln  |
| Lithium   | Li   |
| Magnesia  | Mgs  |
| Molybdenum  | Mo   |
| Nickel  | Ni   |
| Phos.   | Phos |
| Sand  | Sd   |

Compiled by S. Wyche 2000

Geology by S. Wyche 1996, 2001  
M. S. Rattenbury 1991–1992 and A. J. Stewart 1998–1999 (Geoscience Australia)  
(Bollard 1st ed. 1995, 2nd ed. 2000)  
M. B. Duggan 1990–1991, (Geoscience Australia) (Mount Mason preliminary ed. 1995)  
and S. Wyche 2001–2002, (Mount Mason 1st ed. 2003)

C. P. Swager and S. Wyche 1990-1991 (Riverino, 1995)  
W. K. Witt 1990 (Mellito, 1992)  
C. P. Swager and W. K. Witt 1999 (Manning, 1999)

Geochronology by:

- (1) D. R. Nelson, GSWA Record 1996/5, p. 51-58.
- (2) D. R. Nelson, GSWA Record 2002/2, p. 219-227.
- (3) D. R. Nelson, GSWA Record 2002/2, p. 240-243.
- (4) D. R. Nelson, GSWA Record 1995/3, p. 154-157.
- (5) D. R. Nelson, *in press*, GSWA Record 2000/1.

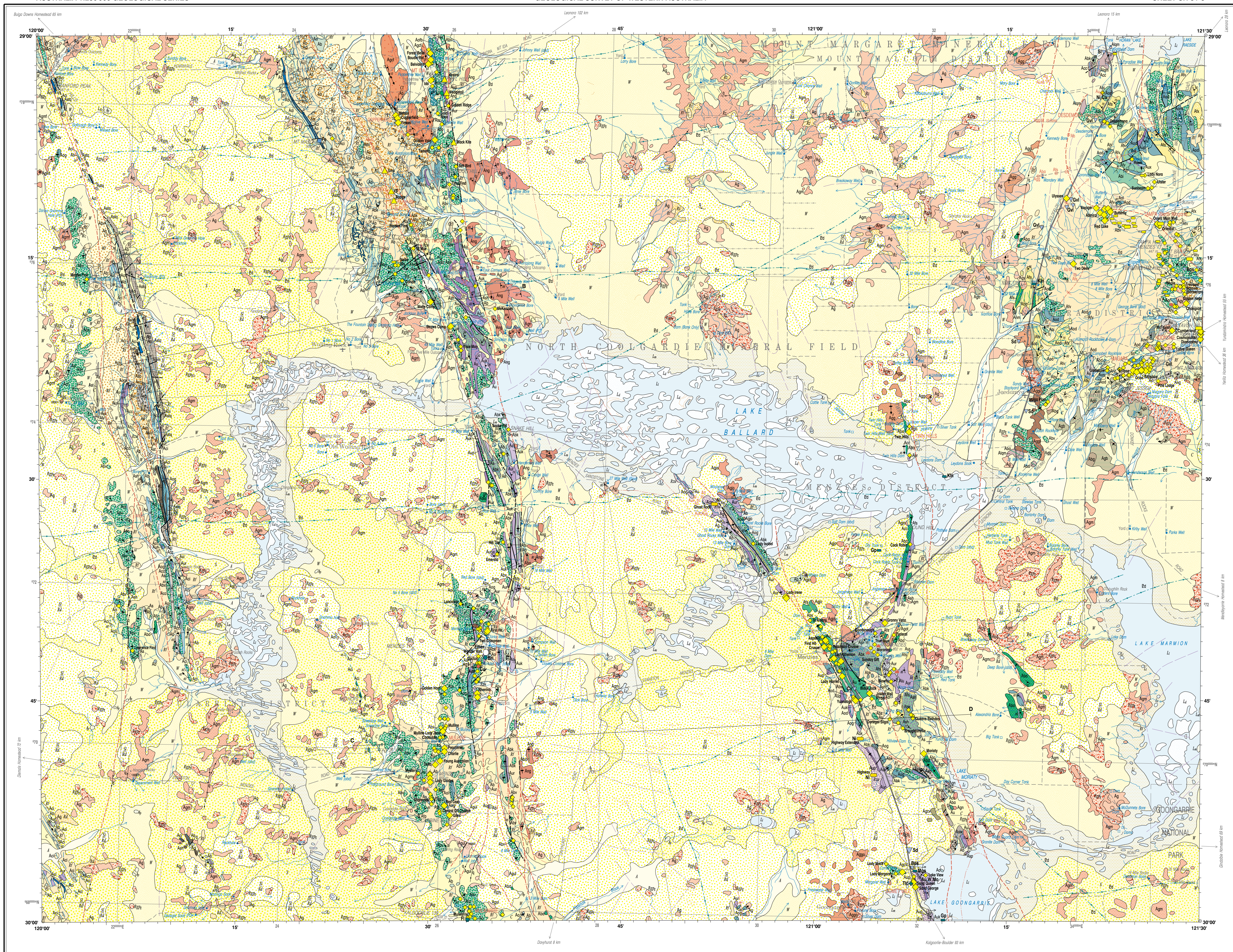
Topography from the Department of Land Administration Sheet SH 51-5, with modifications from geological field survey

Information and knowledge from this report is not to be used for commercial gain. Data from the Western Database, GSWA, at 27 June 2003. Data points filtered for clarity on the hard product, full set of data points available in digital data.

Published by the Geological Survey of Western Australia. Digital and printed copies of this map are available from the Information Centre, Department of Industry and Resources, 100 Plain Street, East Perth, WA, 6004. Phone (08) 9222 3454, Fax (08) 9222 3444

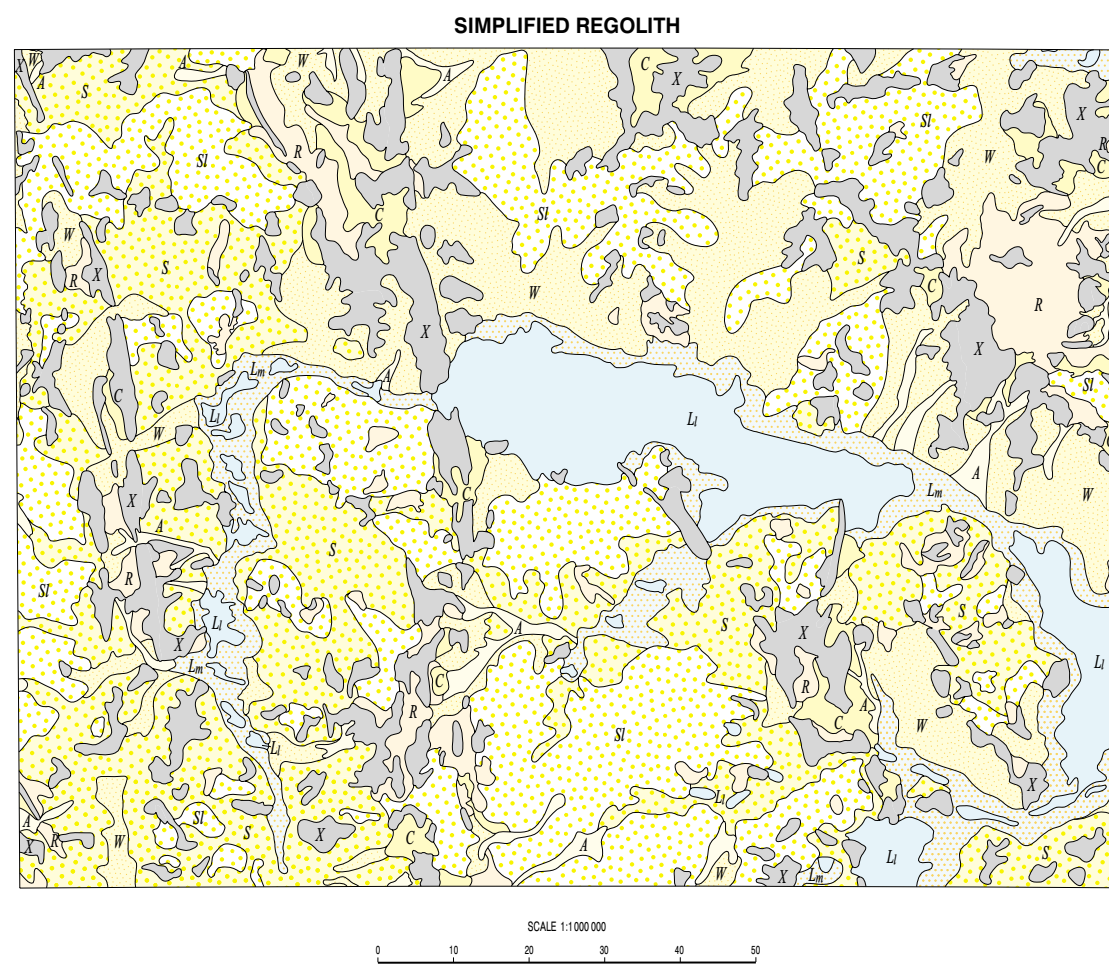
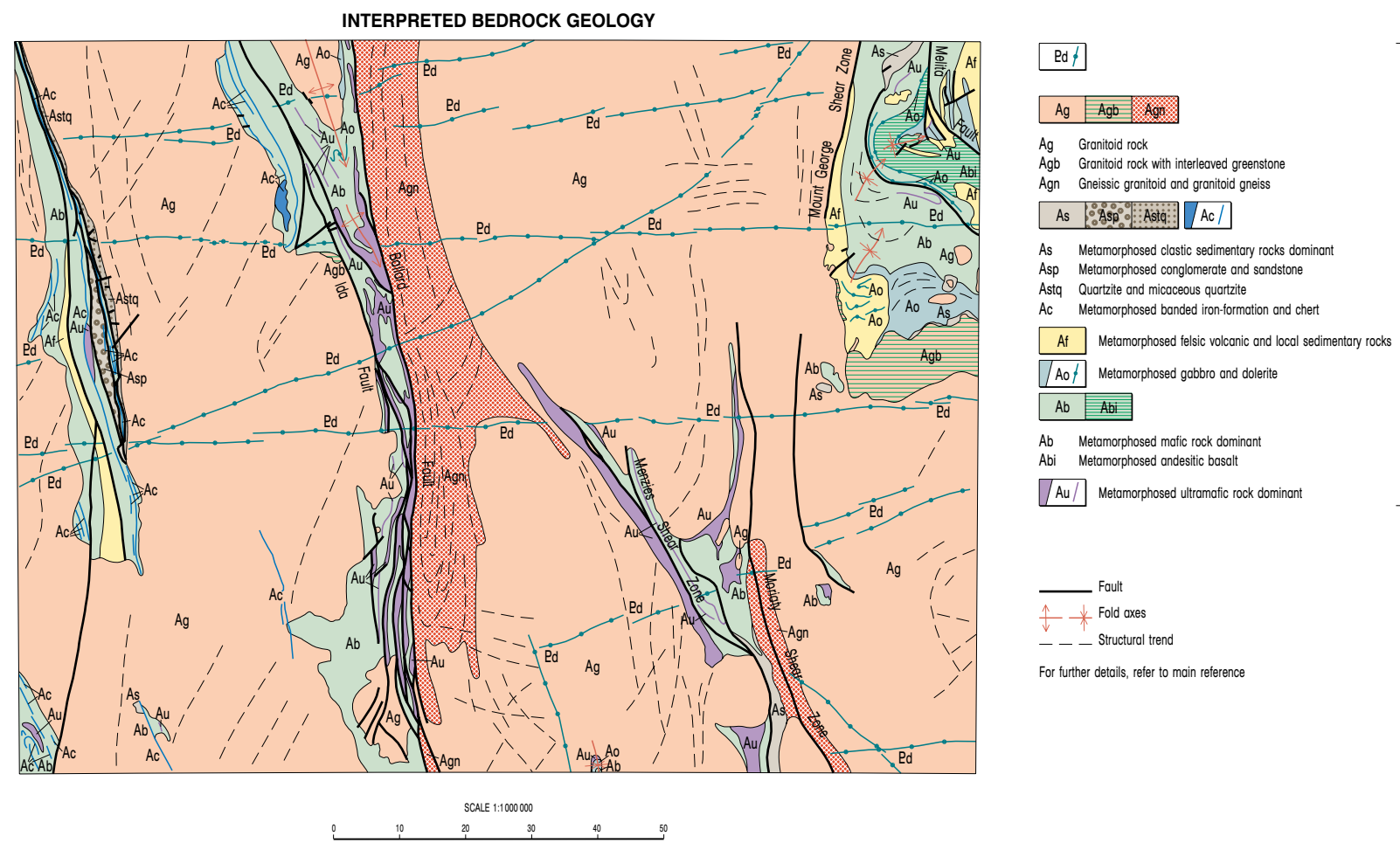
Web: [www.doir.wa.gov.au](http://www.doir.wa.gov.au) Email: [geological\\_survey@doir.wa.gov.au](mailto:geological_survey@doir.wa.gov.au)

This map is also available in digital form  
Plotted by the Geological Survey of Western Australia  
The recommended reference for this map is:  
WYCHE, S., 2003. Menzies, WA. Sheet SH81-5 (2nd edition): Western Australia Geological Survey, 1:250 000 Geological Series.



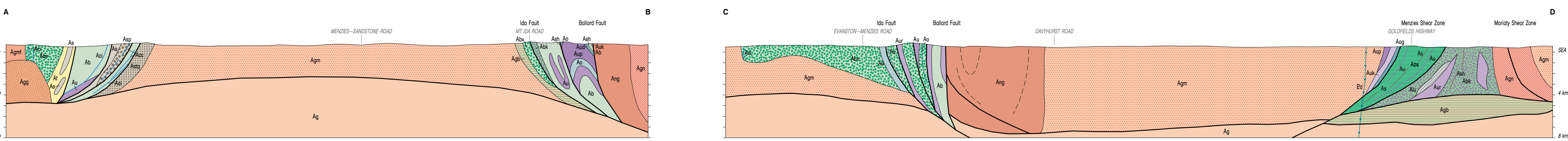
## REFERENCE

- [illegible]



## DIAGRAMMATIC SECTIONS

## TURAL SCALE



MENZIES

SHEET SH 51-5 SECOND EDITION 2003

Version 1 - June 2003

© Western Australia 2003