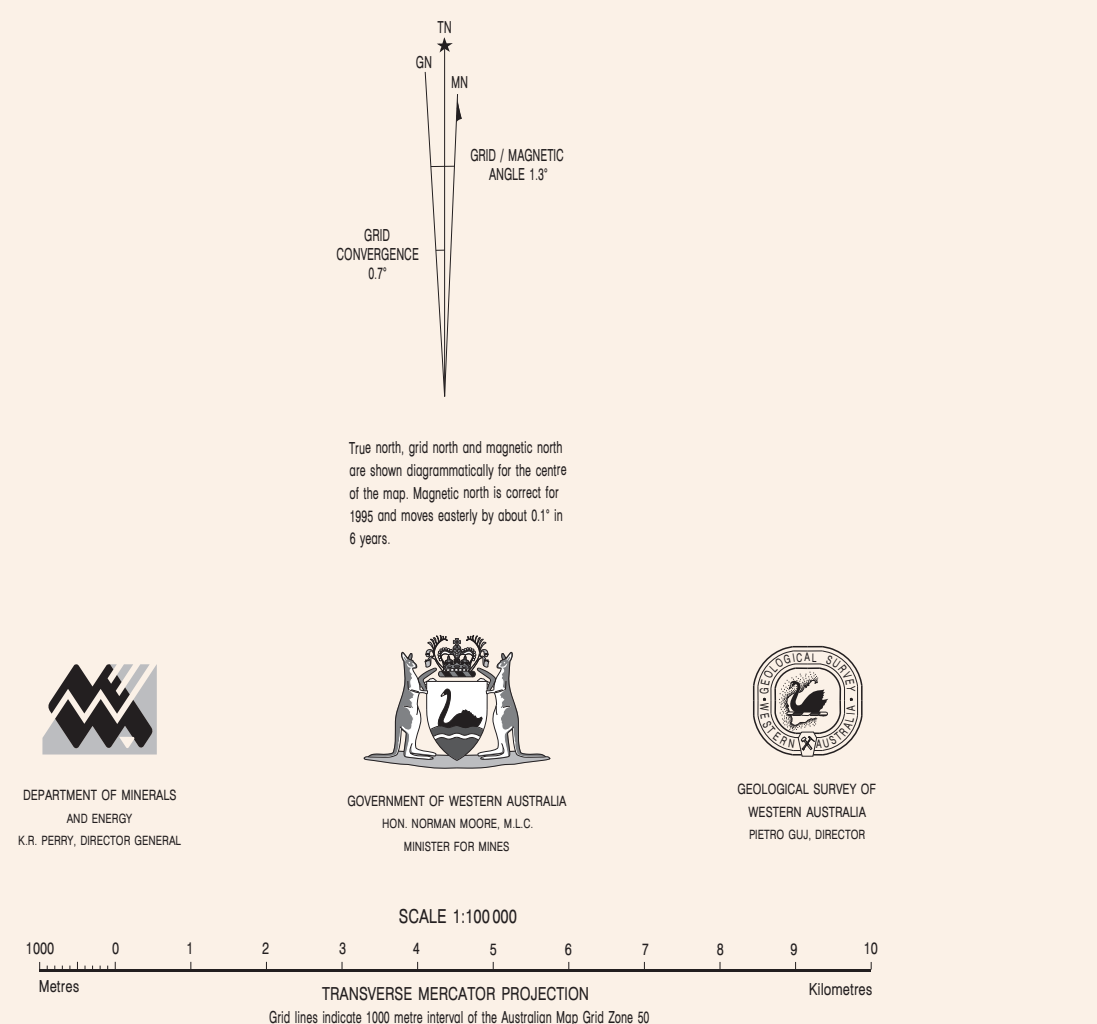
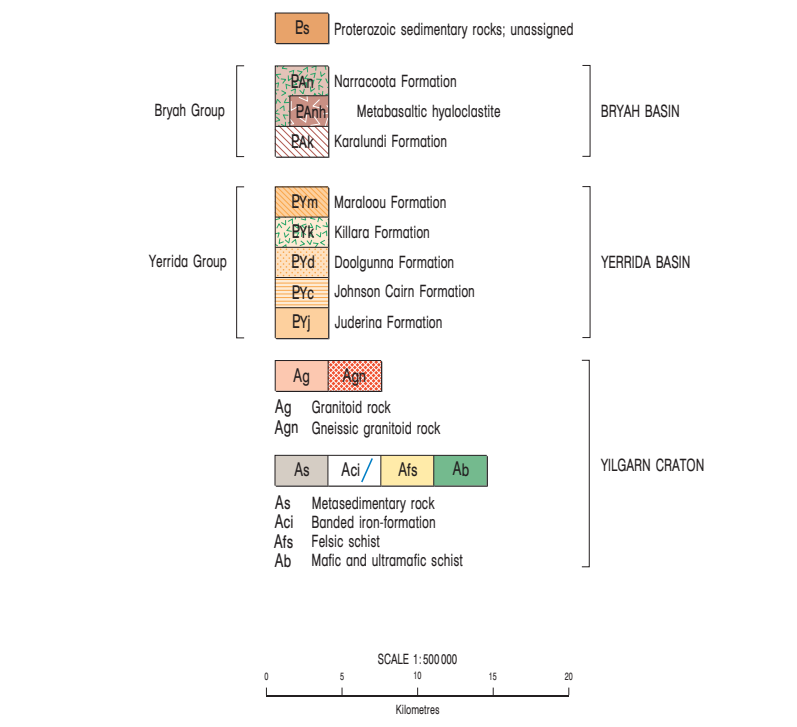
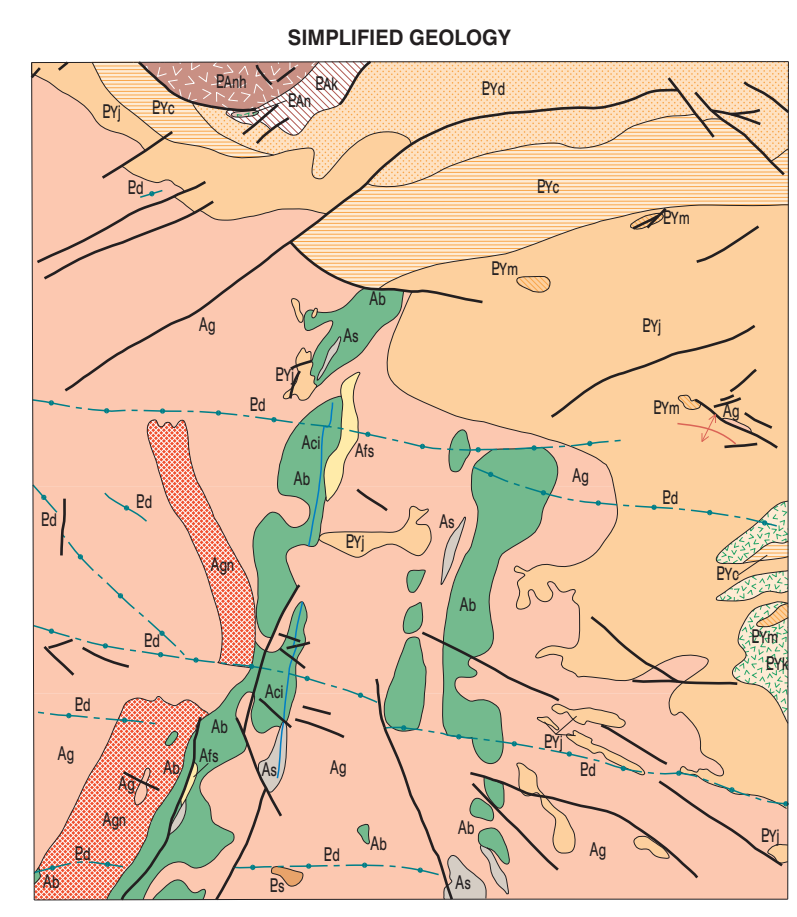


**SHEET INDEX**

SHEET	DATE	REVISION	REVISION	REVISION	REVISION	REVISION	REVISION	REVISION	REVISION
2645	1987	1	2	3	4	5	6	7	8



Geology by F. Pinjo, N. G. Adamides, and D. D. Ferdinando 1985  
 Edited by D. Ferdinando, S. Willis, and G. Loon  
 Cartography by D. Lockwood  
 Topography from the Department of Land Administration Sheet 50 50-12, 2645,  
 with modifications from geological field survey  
 Published by the Geological Survey of Western Australia. Copies available from the  
 Mining Information Centre, Department of Mines and Energy, 100 Plain Street,  
 East Perth, W.A. 6004. Phone (09) 222 3458, Fax (09) 222 3444  
 This map is also available in digital form  
 Printed by Alwex Print, Western Australia  
 The recommended reference for this map is PINJO, F., ADAMIDES, N. G. and FERDINANDO, D. D., 1987  
 Glengarry, W.A. Sheet 2645: Western Australia Geological Survey, 1:100 000 Geological Series  
 © Western Australia 1987

