

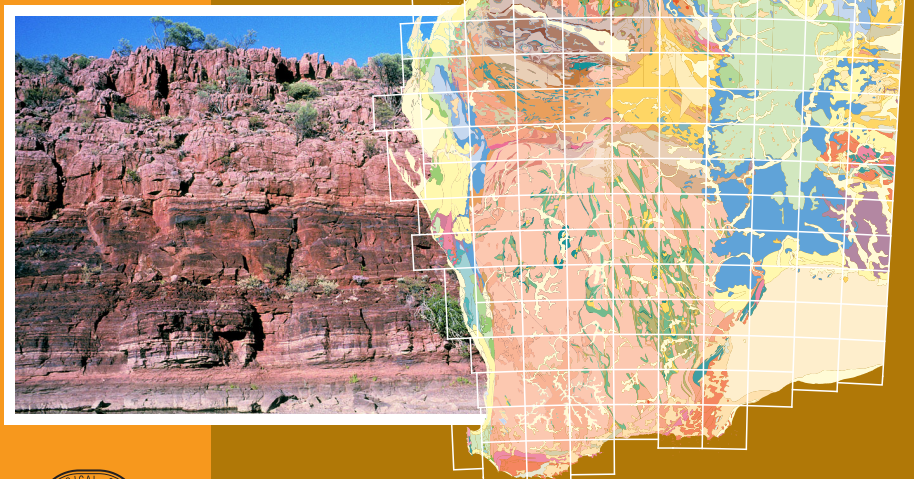


**1:100 000
GEOLOGICAL
INFORMATION
SERIES**

Department of
Industry and Resources

**WESTERN CAPRICORN
OROGEN**
November 2004 update

MARONAH 2051	ULLAWARRA 2151	CAPRICORN 2251
EDMUND		
MANGAROON 2050	SF 50-14 EDMUND 2150	ELLIOTT CREEK 2250



Geological Survey of Western Australia

WESTERN AUSTRALIA

**1:100 000 GEOLOGICAL INFORMATION SERIES
WESTERN CAPRICORN OROGEN**

November 2004 update

Datasets featured on disk:

Geology

Surface geology and structure
GSA geochronology sample locations, and summaries
Interpreted bedrock geology and structure
Petrographical sample locations, and summaries
Project area
Extracts from WAROX database
Cross section geology
Tectonic units

Mineralization and exploration

Mineral exploration activity (EXACT) database points, lines, and polygons
Mineral deposits from MINEDEX database
Tenements from TENGRAPH database
Mineral deposits and occurrences from WAMIN database
Indexes of aeromagnetic data from the MAGIX database

Topography

WA coast and State boundary
Contour lines
Cultural localities
Major rivers and drainage lines
Major water bodies
Hydrographical point features
1:100 000 map sheet index
1:250 000 map sheet index
Major topographical localities
Major roads and tracks
Major townsite locations

Georeferenced images

Aster satellite data bands 8, 3, and 1 covering the project area
1:100 000 Geological Series map images
1:250 000 Geological Series map image
Gravity image at 800 m pixels covering the project area
Landsat TM satellite image covering the project area
Total magnetic intensity image at 125 m spacing covering the project area
SPOT image covering the project area

GeoVIEWER.WA has been designed for the Windows operating system, and has been tested to run on Windows NT 4, Windows ME, Windows 2000, and Windows XP.



Geological Survey of Western Australia
100 Plain Street East Perth 6004 Western Australia
Phone: +61 8 9222 3168 Facsimile: +61 8 9222 3633
Home page: <http://www.doir.wa.gov.au/gswa>

Cover photo: stromatolitic and brecciated dolomite lithofacies, Irregularly Formation, Edmund Group, Irregularly Gorge, southwestern Capricorn 1:100 000 map sheet.

The information in this package remains the property of the Western Australian Department of Industry and Resources and is covered by Crown copyright. Copying or on-selling of these data without prior written permission of the Department of Industry and Resources will be seen as a breach of copyright.

February 2005



1:100 000 Geological Information Series — Western Capricorn Orogen, November 2004 update

Product available from First Floor counter, Mineral House, 100 Plain St, East Perth, WA 6004, AUSTRALIA. Or ordered through: www.doir.wa.gov.au/ebookshop

Enquiries to Email: gsd.dda@doir.wa.gov.au; Phone: +61 8 9222 3459; Fax: +61 8 9222 3444.

Cost: \$55 [inc. GST]